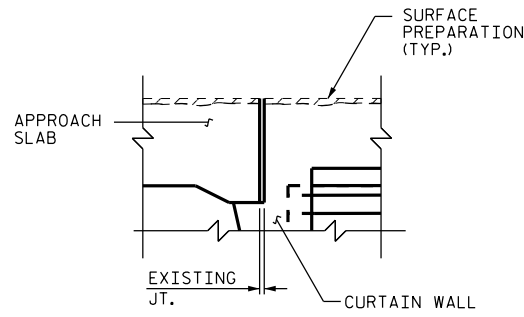
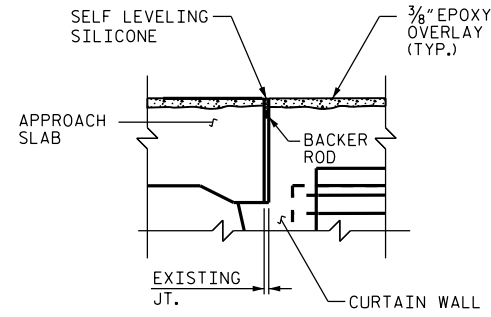


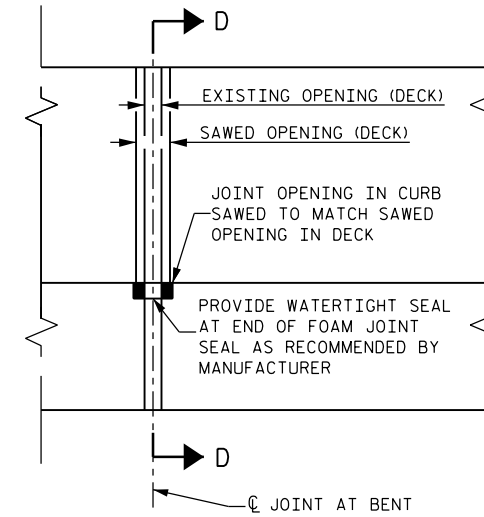
EXISTING JOINT



MINIMUM EXISTING JOINT DEMOLITION



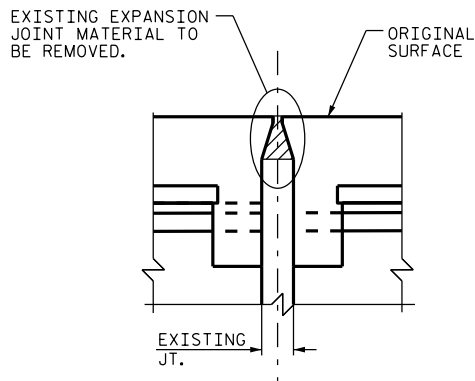
PROPOSED JOINT



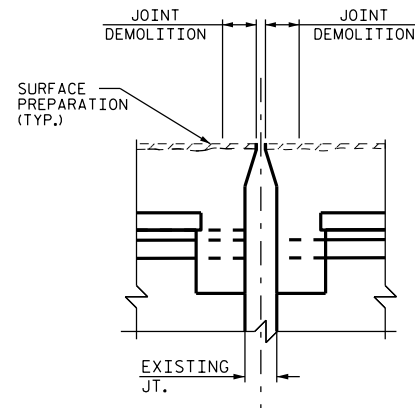
PLAN

JOINT INSTALLATION SEQUENCE AT END BENTS

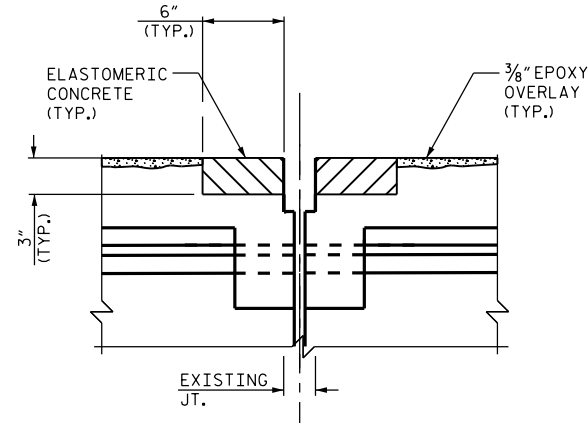
SECTION B-B



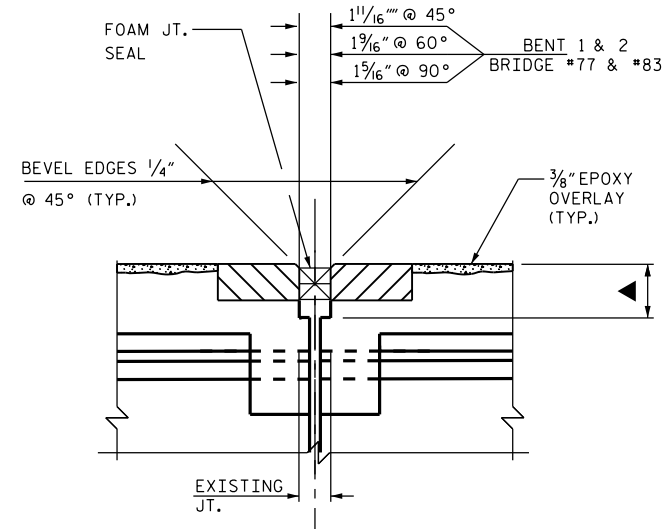
EXISTING JOINT



MINIMUM EXISTING JOINT DEMOLITION



PROPOSED JOINT

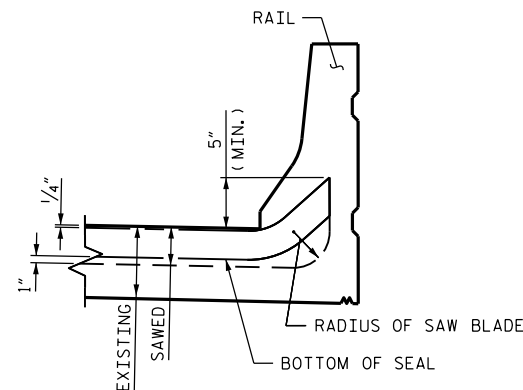


PROPOSED FOAM JOINT SEAL EXPANSION

▲ SAW CUT SHALL BE 3/4" BELOW THE BOTTOM OF THE JOINT SEAL. SEE MANUFACTURER RECOMMENDATIONS

JOINT INSTALLATION SEQUENCE AT BENTS

SECTION A-A



SECTION D-D

NOTES:

- CONTRACTOR SHALL FIELD VERIFY THE EXISTING FORMED OPENING PRIOR TO OBTAINING JOINT MATERIAL.
- FOR FOAM JOINT SEALS, SEE SPECIAL PROVISIONS.
- FOR ELASTOMERIC CONCRETE, SEE SPECIAL PROVISIONS.
- RETAIN ALL EXISTING REINFORCING STEEL, CLEAN AND REPAIR AS NEEDED.
- THE WIDTH OF THE UNCOMPRESSED FOAM JOINT MATERIAL SHALL BE 2".

PROJECT NO. I-5731
 CUMBERLAND COUNTY
 BRIDGE NO.: 77 & 83

DocuSigned by:
Farzin Asefina
 NORTH CAROLINA
 PROFESSIONAL
 SEAL
 20103
 ENGINEER
 FARZIN ASEFINA
 4/14/2016

STATE OF NORTH CAROLINA
 DEPARTMENT OF TRANSPORTATION
 RALEIGH
 SUPERSTRUCTURE
 JOINT DETAILS

DRAWN BY : M. WELDON DATE : 2/2016
 CHECKED BY : W. C. SMITH DATE : 2/2016

DOCUMENT NOT CONSIDERED FINAL UNLESS ALL SIGNATURES COMPLETED

REVISIONS						SHEET NO.
NO.	BY:	DATE:	NO.	BY:	DATE:	S-15
1			3			TOTAL SHEETS
2			4			37