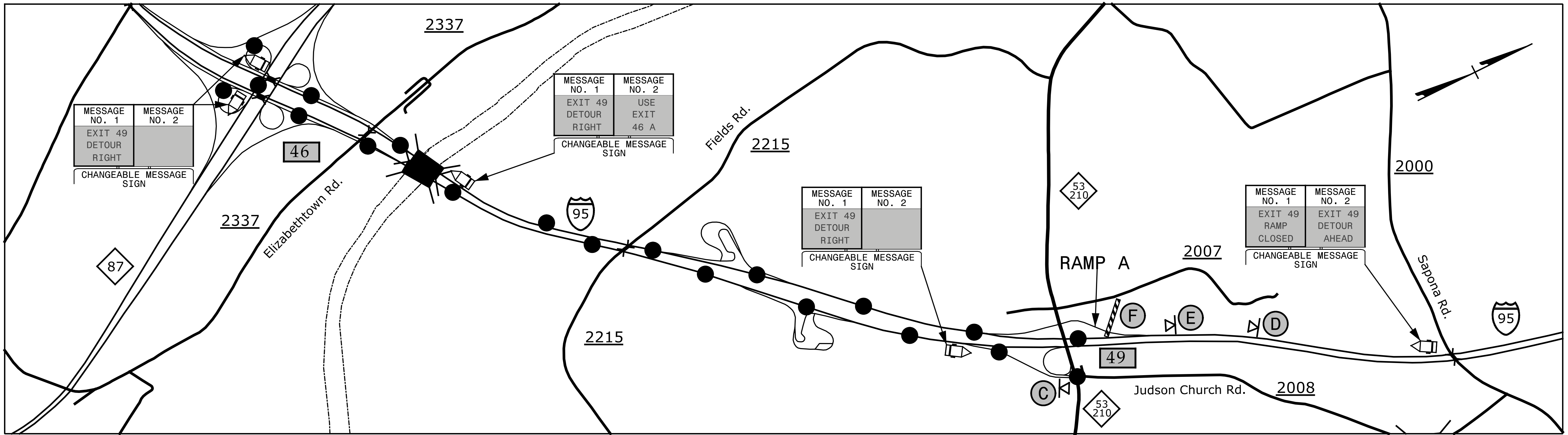
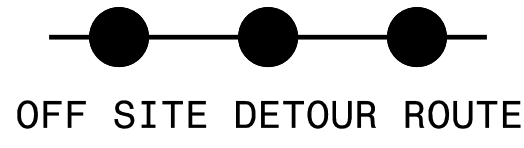
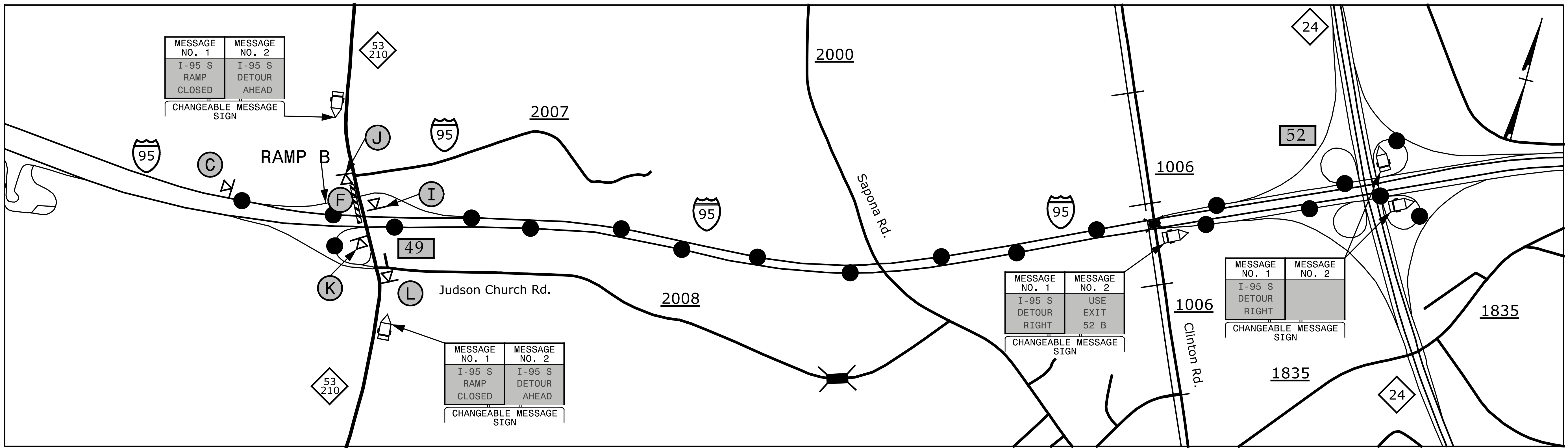


EXIT 49 RAMP A - I-95



EXIT 49 RAMP B - I-95



NOTE: 1. SEE TMP-2B FOR SIGN LEGEND
2. SEE TMP-3 FOR RAMP CLOSURE

SEPI
ENGINEERING & CONSTRUCTION

1025 Wade Avenue
Raleigh, NC 27605
Tel: 919-789-9977
Fax: 919-789-9591
License: C-2197

APPROVED: *Steve Miller*
DATE: 2/29/2016

SEAL

DOCUMENT NOT CONSIDERED FINAL UNLESS ALL SIGNATURES COMPLETED



NC 53/NC 210 DETOUR

DEPARTMENT OF TRANSPORTATION
DIVISION OF HIGHWAYS
STATE OF NORTH CAROLINA
WORK ZONE TRAFFIC CONTROL

2/8/2016 G:\Transportation\TR13.017.00 NCDOT 2012 Traffic LSA\TR13.017.01 (I-5731)\TMP\I-5731-TMP-14.dgn