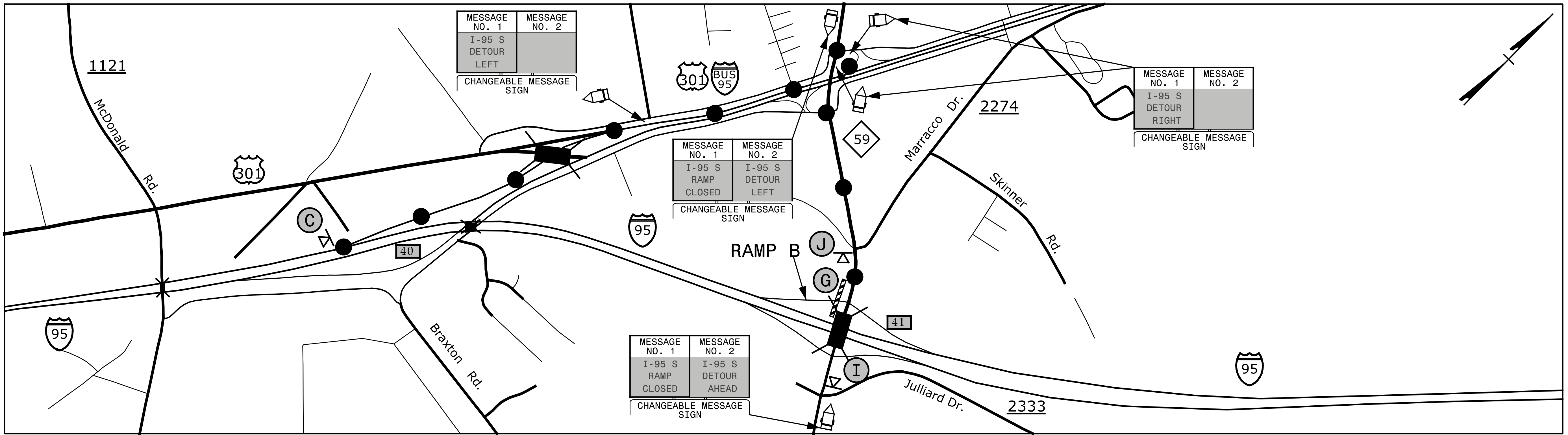
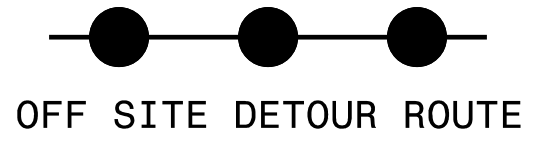
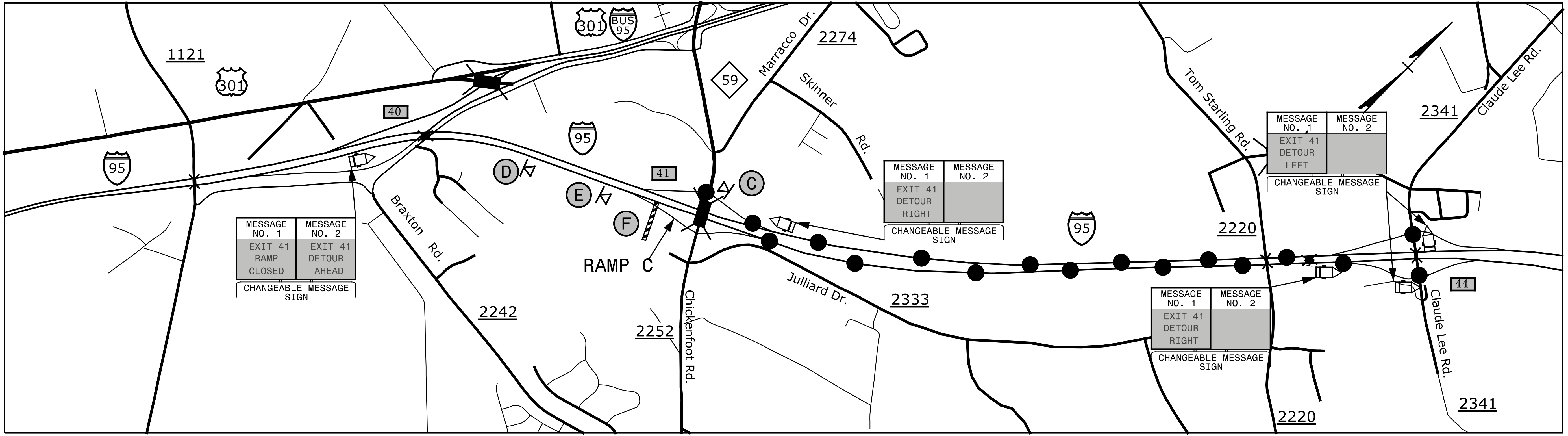


### EXIT 41 RAMP B - I-95



### EXIT 41 RAMP C - I-95



NOTE: 1. SEE TMP-2B FOR SIGN LEGEND  
 2. SEE TMP-3 FOR RAMP CLOSURE

**SEPI**  
 ENGINEERING & CONSTRUCTION  
 1025 Wade Avenue  
 Raleigh, NC 27605  
 Tel: 919-789-9977  
 Fax: 919-789-9591  
 License: C-2197

APPROVED: *Steve Miller*  
9FBC0C15CEEB486  
 DATE: 2/29/2016

SEAL

**DOCUMENT NOT CONSIDERED FINAL  
 UNLESS ALL SIGNATURES COMPLETED**



**NC 59  
 DETOUR**

2/4/2016  
 G:\Transportation\TR13.017.00 NCDOT 2012 Traffic LSA\TR13.017.01 (I-5731)\TMP\I-5731-TMP-5.dgn  
 \files