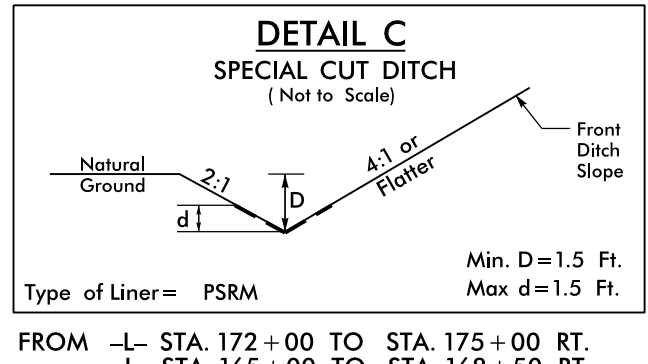
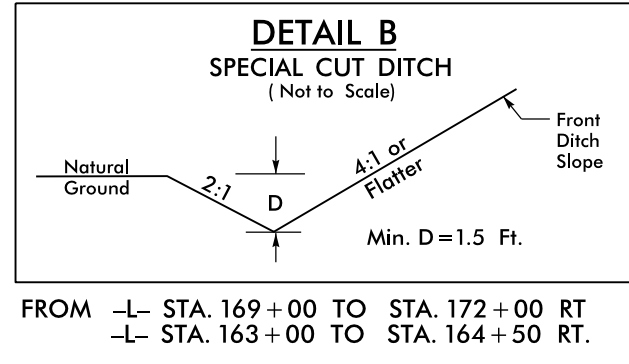
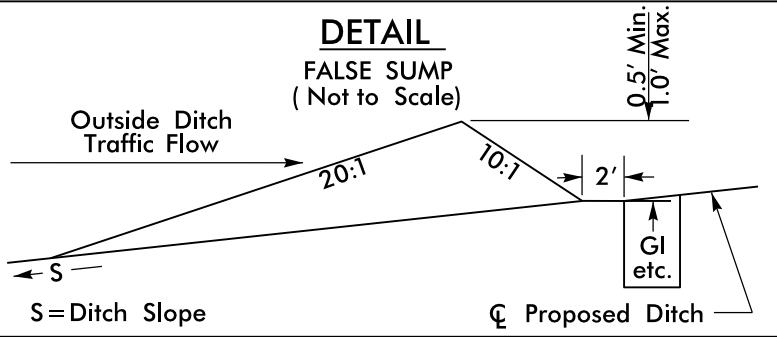


PROJECT REFERENCE NO. R-4416	SHEET NO. EC-31/CONST.15
RW SHEET NO.	
ROADWAY DESIGN ENGINEER	HYDRAULICS ENGINEER

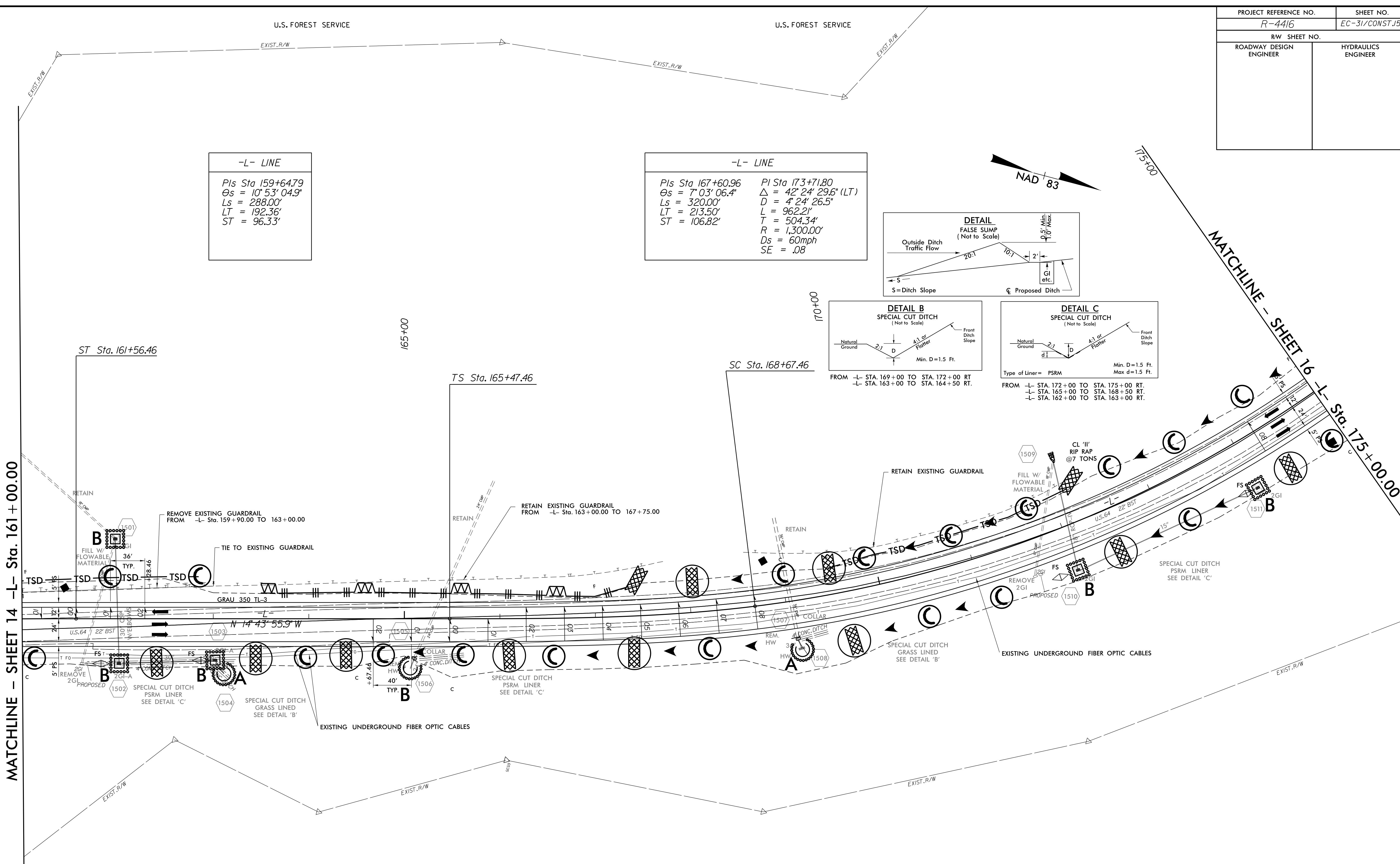
-L- LINE
Pls Sta 159+64.79 $\Theta_s = 10^\circ 53' 04.9''$ $L_s = 288.00'$ $LT = 192.36'$ $ST = 96.33'$

-L- LINE
Pls Sta 167+60.96 Pl Sta 173+71.80 $\Theta_s = 7^\circ 03' 06.4''$ $\Delta = 42^\circ 24' 29.6''$ (LT) $L_s = 320.00'$ $D = 4^\circ 24' 26.5''$ $LT = 213.50'$ $L = 962.21'$ $ST = 106.82'$ $T = 504.34'$ $R = 1,300.00'$ $D_s = 60\text{mph}$ $SE = .08$



MATCHLINE - SHEET 14 -L- Sta. 161+00.00

MATCHLINE - SHEET 16 -L- Sta. 175+00.00



8/17/99
C:\Users\jbr\Documents\Projects\R-4416\Drawings\EC-31\CONST.15.dgn
C:\Users\jbr\Documents\Projects\R-4416\Drawings\EC-31\CONST.15.dgn
C:\Users\jbr\Documents\Projects\R-4416\Drawings\EC-31\CONST.15.dgn

FOR -L- PROFILE SEE SHEET 25 & 26