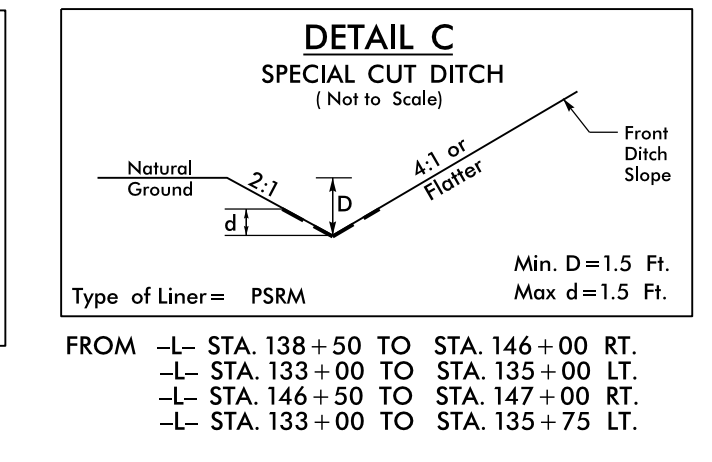
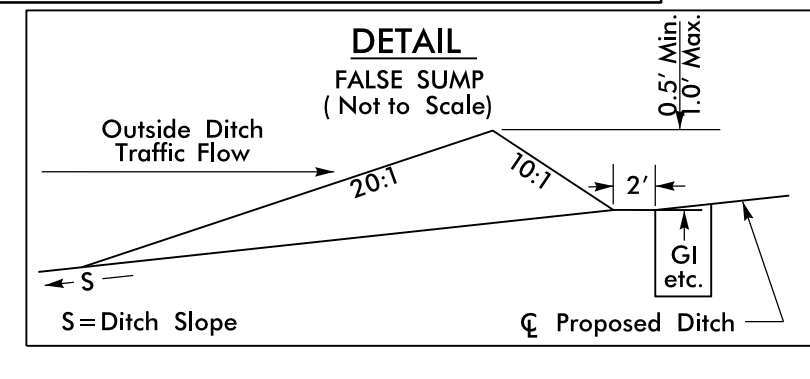
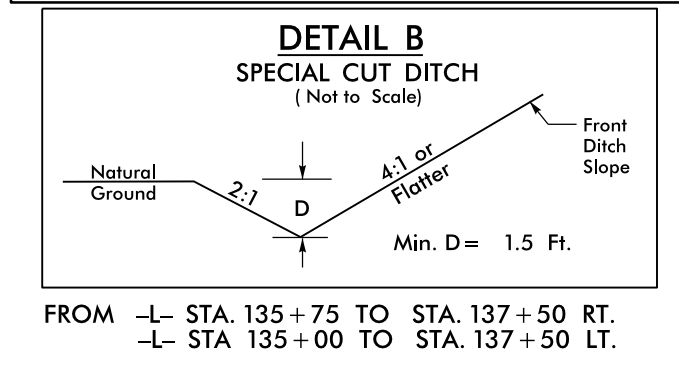
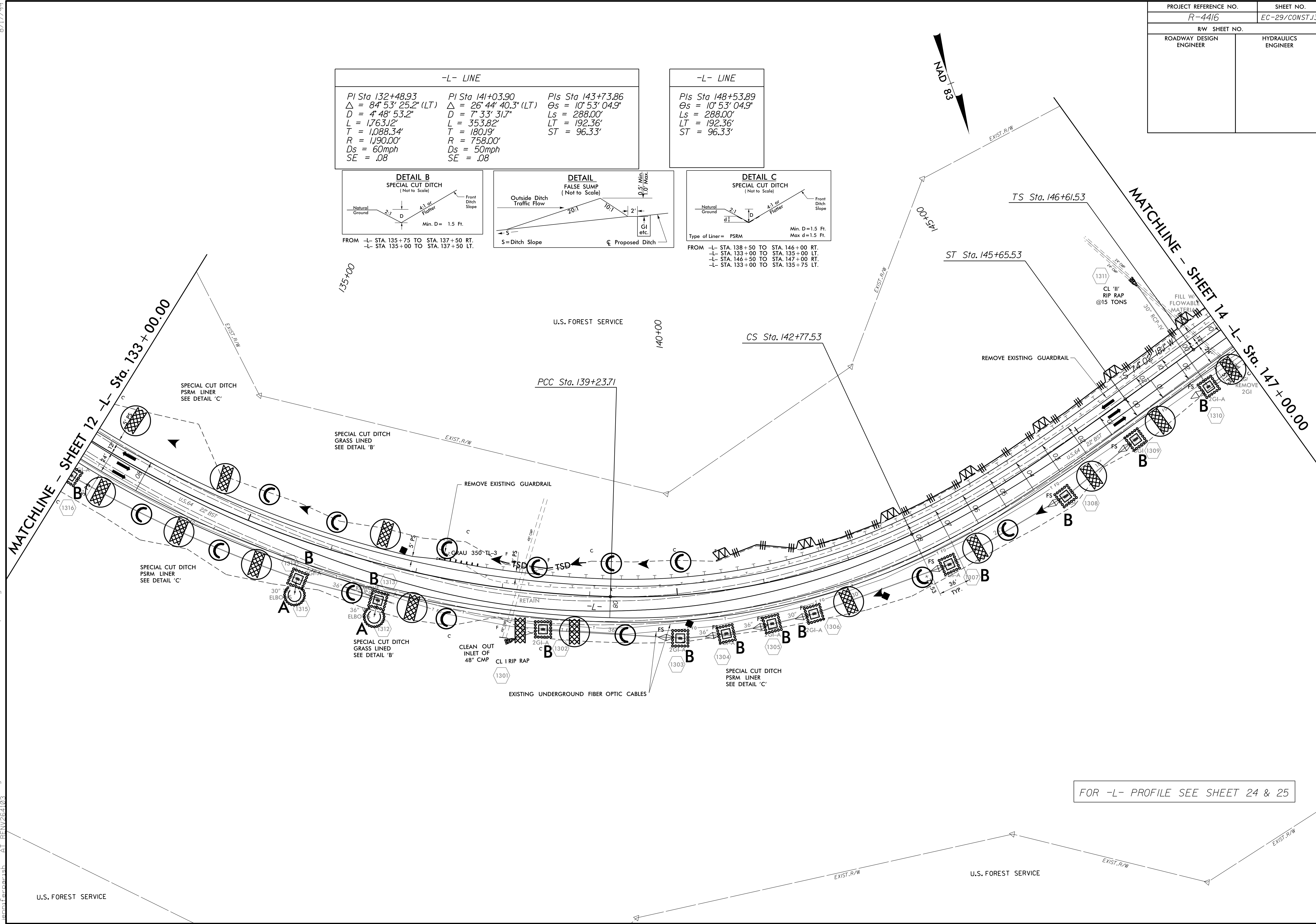


PROJECT REFERENCE NO. R-4416	SHEET NO. EC-29/CONST.13
RW SHEET NO.	
ROADWAY DESIGN ENGINEER	HYDRAULICS ENGINEER

-L- LINE			-L- LINE
PI Sta 132+48.93	PI Sta 141+03.90	PIs Sta 143+73.86	PIs Sta 148+53.89
$\Delta = 84^{\circ} 53' 25.2''$ (LT)	$\Delta = 26^{\circ} 44' 40.3''$ (LT)	$\Theta_s = 10^{\circ} 53' 04.9''$	$\Theta_s = 10^{\circ} 53' 04.9''$
$D = 4^{\circ} 48' 53.2''$	$D = 7^{\circ} 33' 31.7''$	$L_s = 288.00'$	$L_s = 288.00'$
$L = 1,763.12'$	$L = 353.82'$	$LT = 192.36'$	$LT = 192.36'$
$T = 1,088.34'$	$T = 180.19'$	$ST = 96.33'$	$ST = 96.33'$
$R = 1,190.00'$	$R = 758.00'$		
$D_s = 60\text{mph}$	$D_s = 50\text{mph}$		
$SE = .08$	$SE = .08$		



8/17/99
 17-FEB-2006 JHS
 C:\projects\2006\1316\1316.dgn
 2-11-2006 R-4416-EC.psh13.dgn
 2-11-2006 R-4416-EC.psh13.dgn
 2-11-2006 R-4416-EC.psh13.dgn



FOR -L- PROFILE SEE SHEET 24 & 25