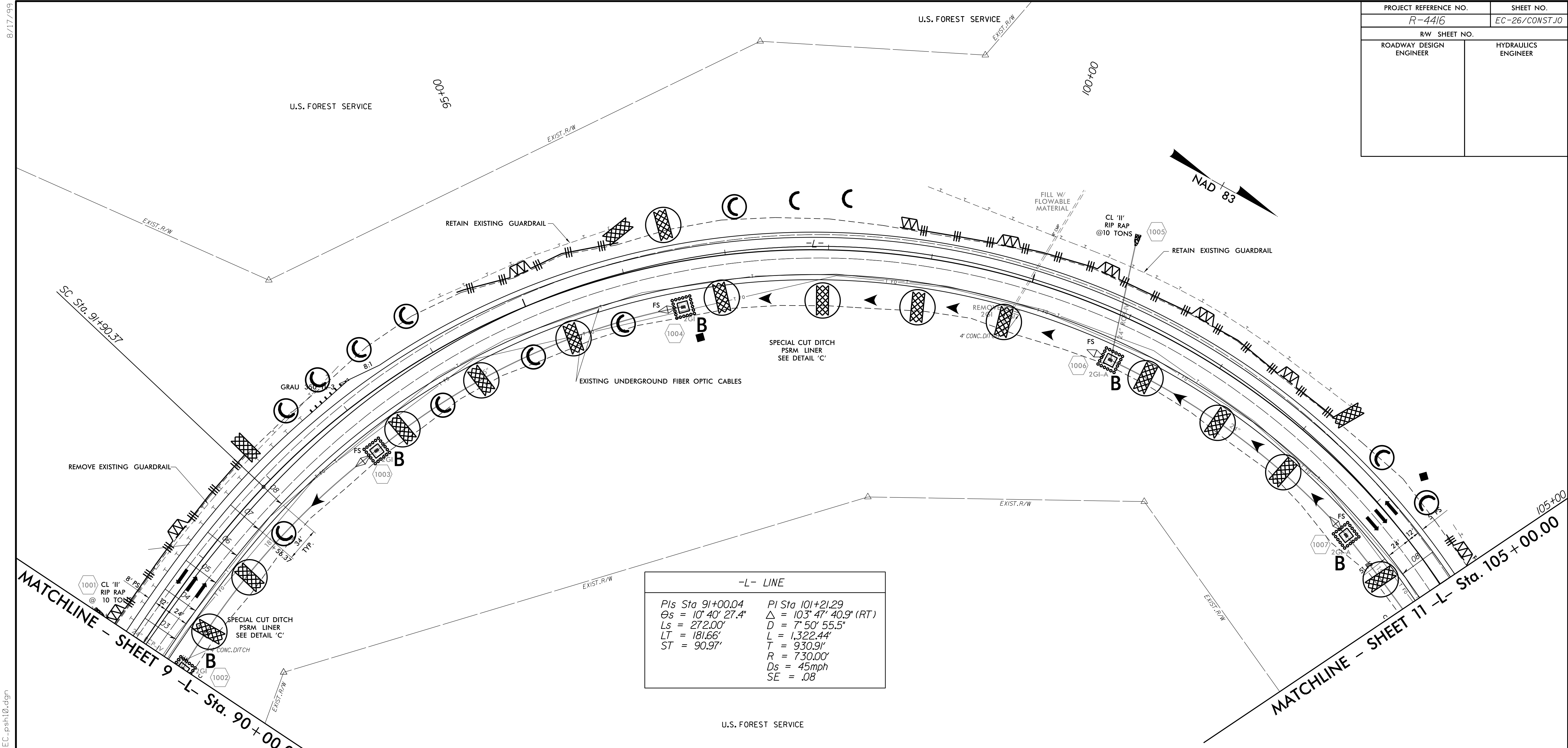
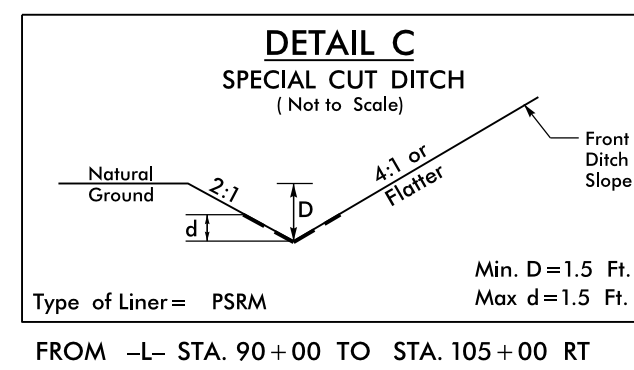
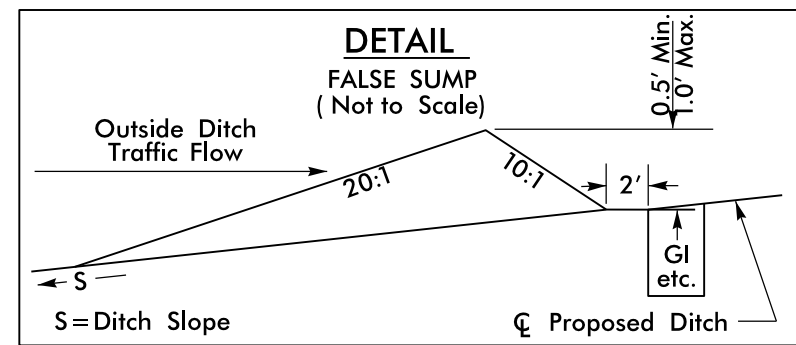


PROJECT REFERENCE NO.	SHEET NO.
R-4416	EC-26/CONST.10
RW SHEET NO.	
ROADWAY DESIGN ENGINEER	HYDRAULICS ENGINEER



-L- LINE	
PIs Sta 91+00.04	PI Sta 101+21.29
$\theta_s = 10^\circ 40' 27.4"$	$\Delta = 103^\circ 47' 40.9" (RT)$
$L_s = 272.00'$	$D = 7^\circ 50' 55.5"$
$LT = 181.66'$	$L = 1,322.44'$
$ST = 90.97'$	$T = 930.91'$
	$R = 7,300.00'$
	$D_s = 45\text{mph}$
	$SE = .08$



FOR -L- PROFILE SEE SHEET 23

8/17/99  
 C:\FEB 2006\JTB\Projects\2006\2-11-2006\R-4416 (Clay Co. DDRL)\Revisions 2-11-2006\R-4416-EC.psh10.dgn  
 User: jtb  
 Date: 2/11/06 10:30 AM