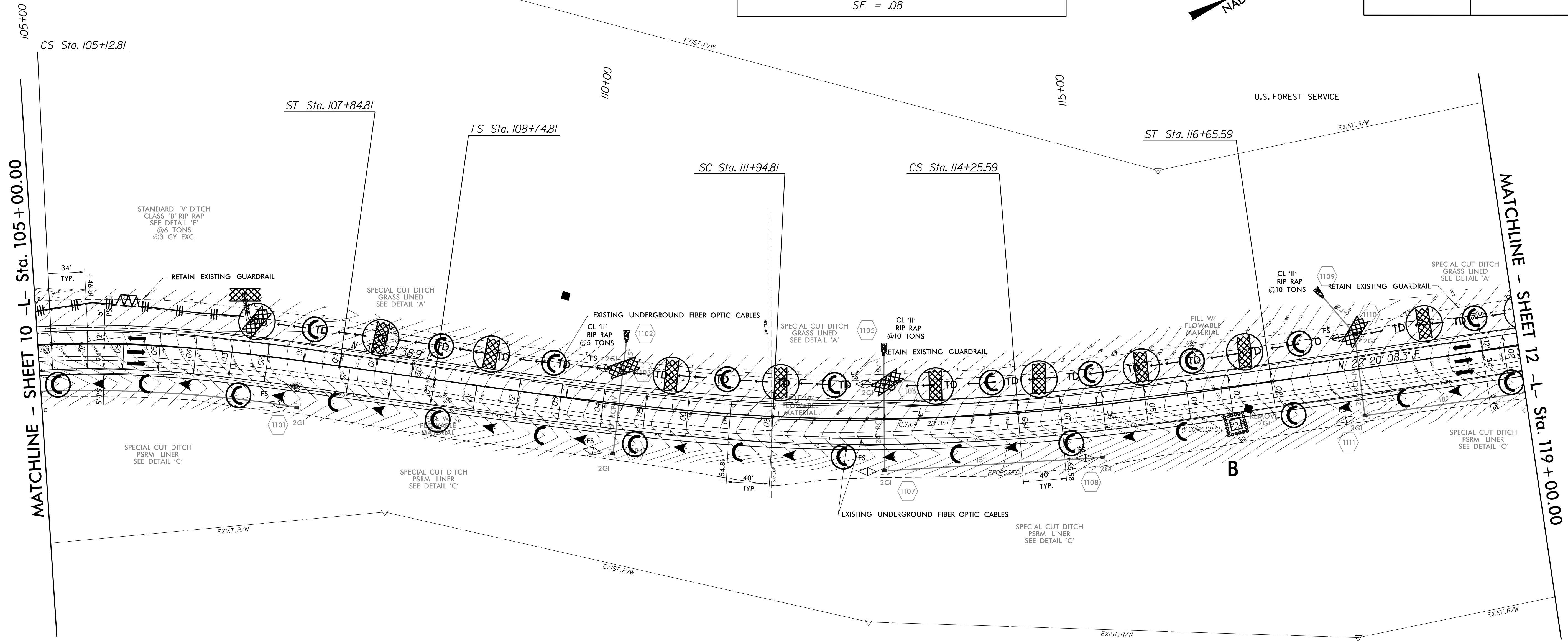
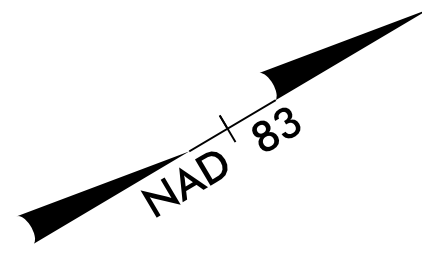


PROJECT REFERENCE NO.	SHEET NO.
R-4416	EC-11/CONST.II
RW SHEET NO.	
ROADWAY DESIGN ENGINEER	HYDRAULICS ENGINEER

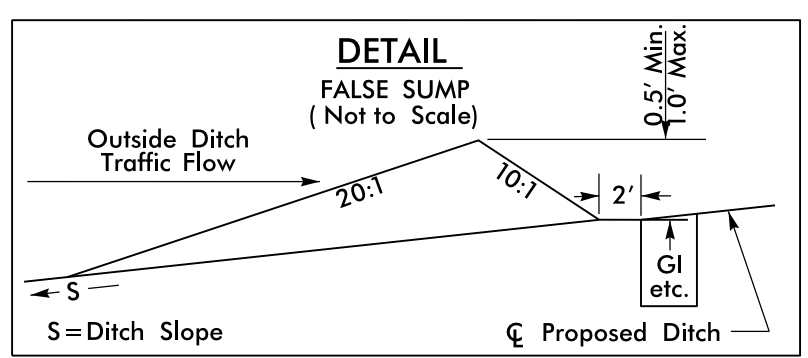
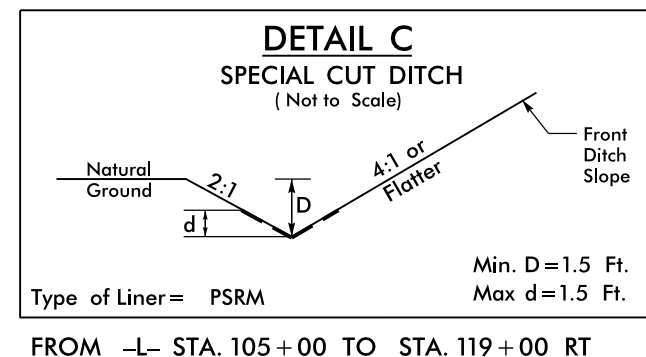
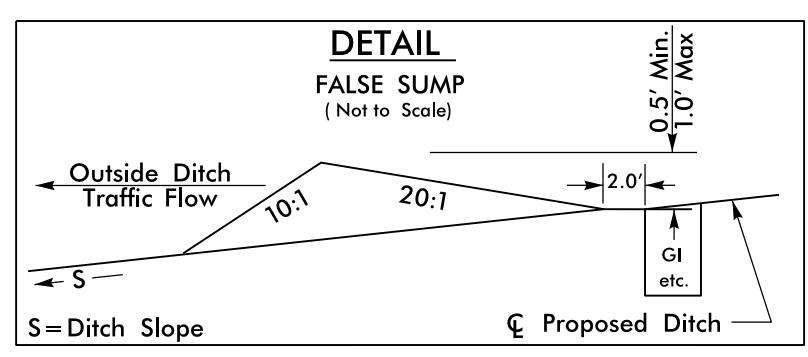
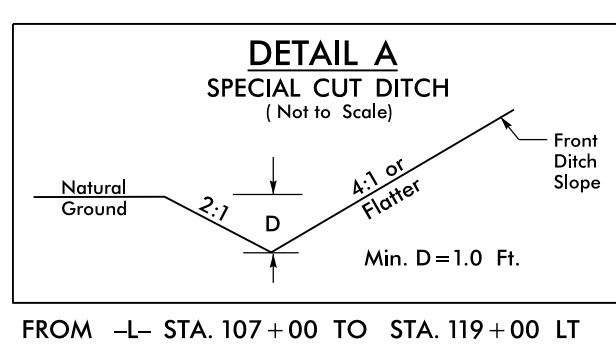
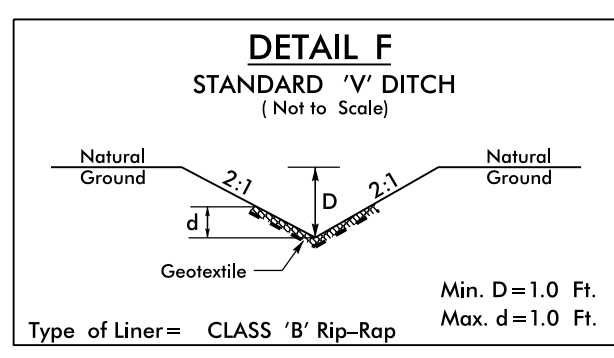
-L- LINE		
PIs Sta 110+88.23	PI Sta 113+10.36	PIs Sta 115+05.62
$\theta_s = 5^{\circ}05'34.6''$	$\Delta = 7^{\circ}20'45.0''$ (LT)	$\theta_s = 3^{\circ}49'11.0''$
$L_s = 320.00'$	$D = 3^{\circ}10'59.2''$	$L_s = 240.00'$
$LT = 213.42'$	$L = 230.78'$	$LT = 160.04'$
$ST = 106.75'$	$T = 115.55'$	$ST = 80.03'$
	$R = 1,800.00'$	
	$D_s = 60\text{mph}$	
	$SE = .08$	



-L- LINE	
PI Sta 101+21.29	PIs Sta 106+03.78
$\Delta = 103^{\circ}47'40.9''$ (RT)	$\theta_s = 10^{\circ}40'27.4''$
$D = 7^{\circ}50'55.5''$	$L_s = 272.00'$
$L = 1,322.44'$	$LT = 181.66'$
$T = 930.91'$	$ST = 90.97'$
$R = 730.00'$	
$D_s = 45\text{mph}$	
$SE = .08$	

CLEARING AND GRUBBING
EROSION CONTROL FOR
CONSTRUCTION SHEET 11

NOTE:
PLACE TEMPORARY ROCK SEDIMENT DAMS TYPE - B
AND TEMPORARY ROCK SILT CHECKS TYPE - A AT
DRAINAGE OUTLETS.



FOR -L- PROFILE SEE SHEET 23 & 24

8/17/99
C:\FEB 2006\JEL\TS\revs\11\4416\Revisions 2-11-2006\R-4416-EC.psh11.dgn
C:\FEB 2006\JEL\TS\revs\11\4416\Revisions 2-11-2006\R-4416-EC.psh11.dgn