

8/17/99

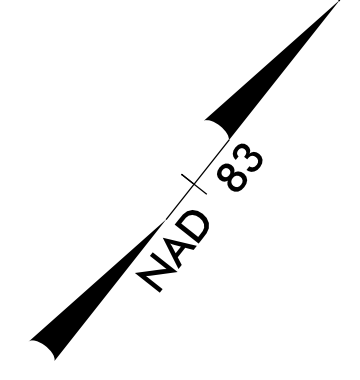
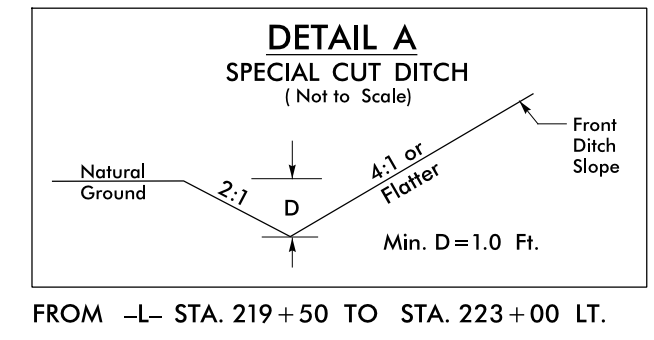
2/18/2016 2:28:22 PM R:\416.rdy_psh19.dgn
USER: toddbuckner

REVISIONS

MATCHLINE - SHEET 19 -L- Sta. 214 + 00.00

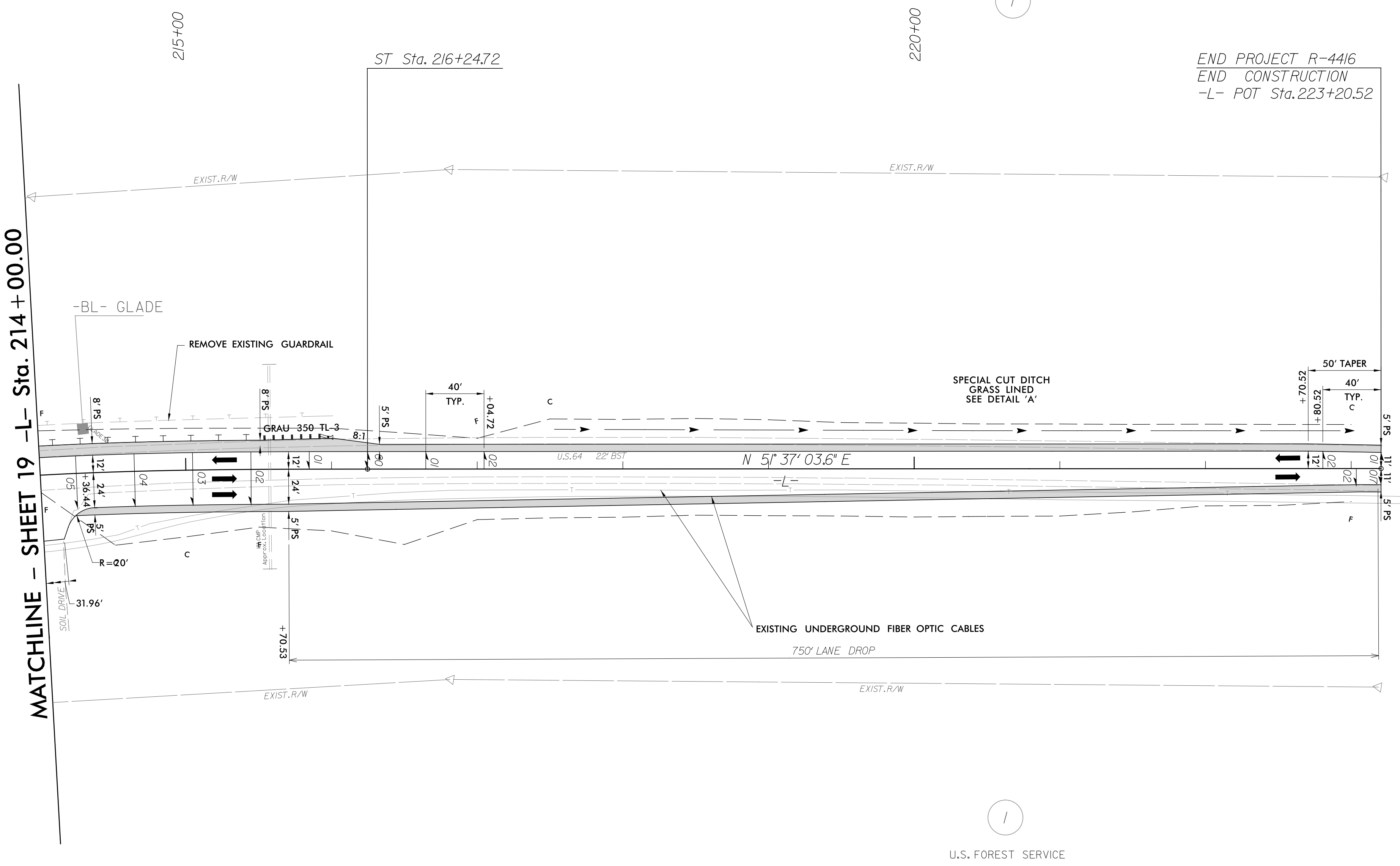
-L- LINE

Pls Sta 214+11.51
 $\theta_s = 6^\circ 19' 20.3''$
 $L_s = 320.00'$
 $LT = 213.47'$
 $ST = 106.79'$



PROJECT REFERENCE NO. R-4416	SHEET NO. 19
RW SHEET NO.	
ROADWAY DESIGN ENGINEER SEAL 034367 TODD H. BUCKNER	HYDRAULICS ENGINEER SEAL 20870 MARC T. SHOWN
DocuSigned by: Todd H. Buckner 2/18/2016	DocuSigned by: Marc T. Shown 2/18/2016
Michael Baker Engineering, Inc. 1500 Regency Park Suite 600 Cary, NC 27518 INTERNATIONAL NC License: F-1084	NC DEPARTMENT OF TRANSPORTATION HYDRAULICS UNIT 1500 MAIL SERVICE CENTER RALEIGH, NC 27699-1500

**DOCUMENT NOT CONSIDERED FINAL
UNLESS ALL SIGNATURES COMPLETED**



FOR -L- PROFILE SEE SHEET 27 & 28