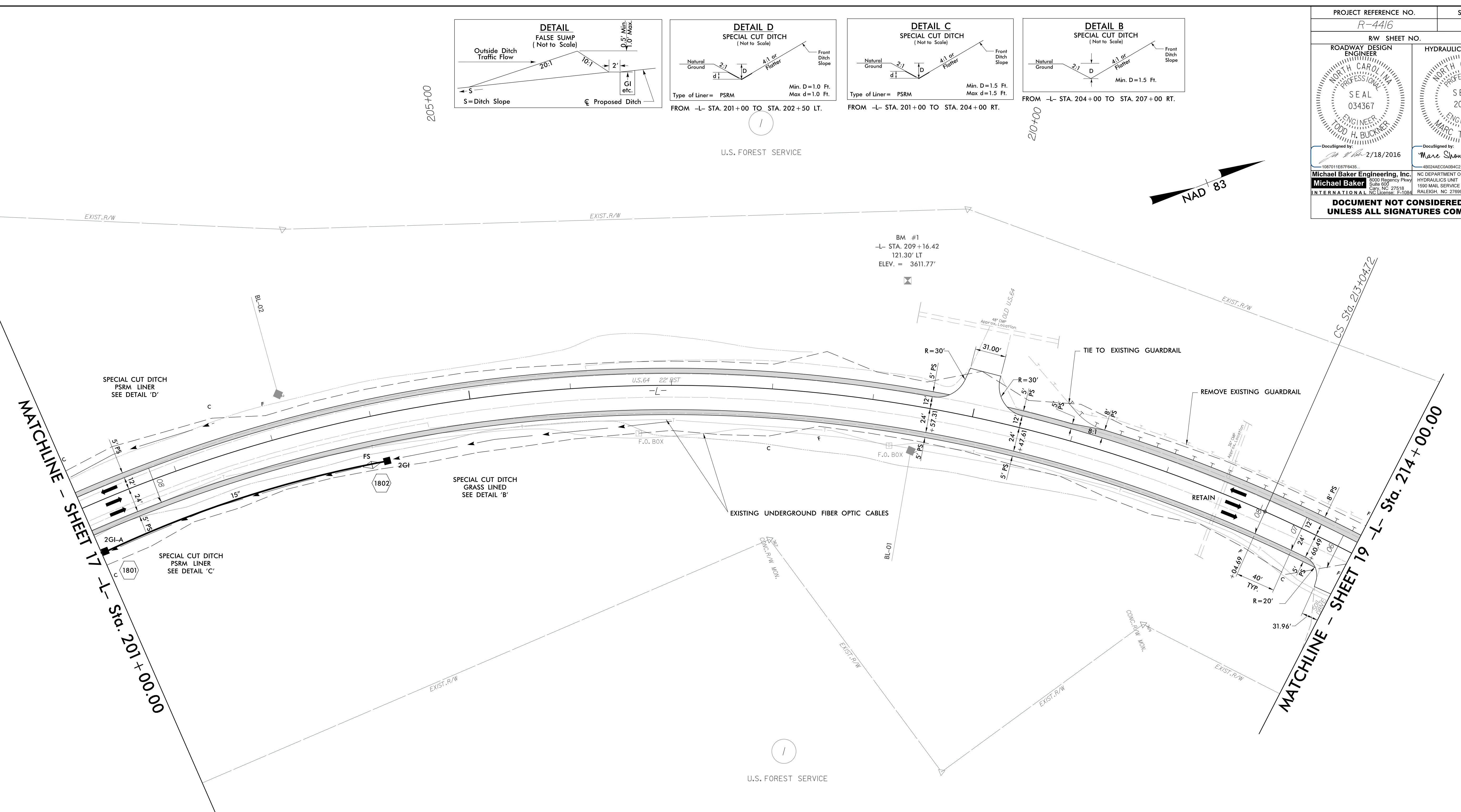
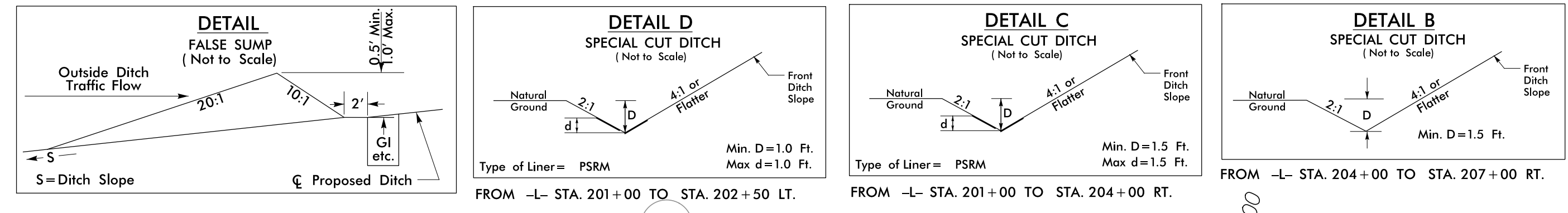


PROJECT REFERENCE NO. <i>R-4416</i>		SHEET NO. <i>18</i>	
RW SHEET NO.			
ROADWAY DESIGN ENGINEER		HYDRAULICS ENGINEER	
DocuSigned by: <i>Todd H. Buckner</i> 2/18/2016		DocuSigned by: <i>Marc Showen</i> 2/18/2016	
<b>Michael Baker Engineering, Inc.</b> 1500 Regency Park Suite 600 Cary, NC 27518 INTERNATIONAL NC License: F-1084		NC DEPARTMENT OF TRANSPORTATION HYDRAULICS UNIT 1590 MAIL SERVICE CENTER RALEIGH, NC 27699-1590	
<b>DOCUMENT NOT CONSIDERED FINAL UNLESS ALL SIGNATURES COMPLETED</b>			



-L- LINE	
<i>PI Sta 206+09.88</i>	<i>PIs Sta 214+11.51</i>
$\Delta = 61^{\circ} 38' 06.6''$ (RT)	$\Theta_s = 61^{\circ} 19' 20.3''$
$D = 3' 57' 05.2''$	$L_s = 320.00'$
$L = 1,559.82'$	$LT = 213.47'$
$T = 864.98'$	$ST = 106.79'$
$R = 1,450.00'$	
$D_s = 60\text{mph}$	
$SE = .08$	

FOR -L- PROFILE SEE SHEET 27

REVISIONS

8/17/99

2/18/2016 2:28:22 PM R:\4416.rdw\_psh18.dgn  
USER: toddbuckner