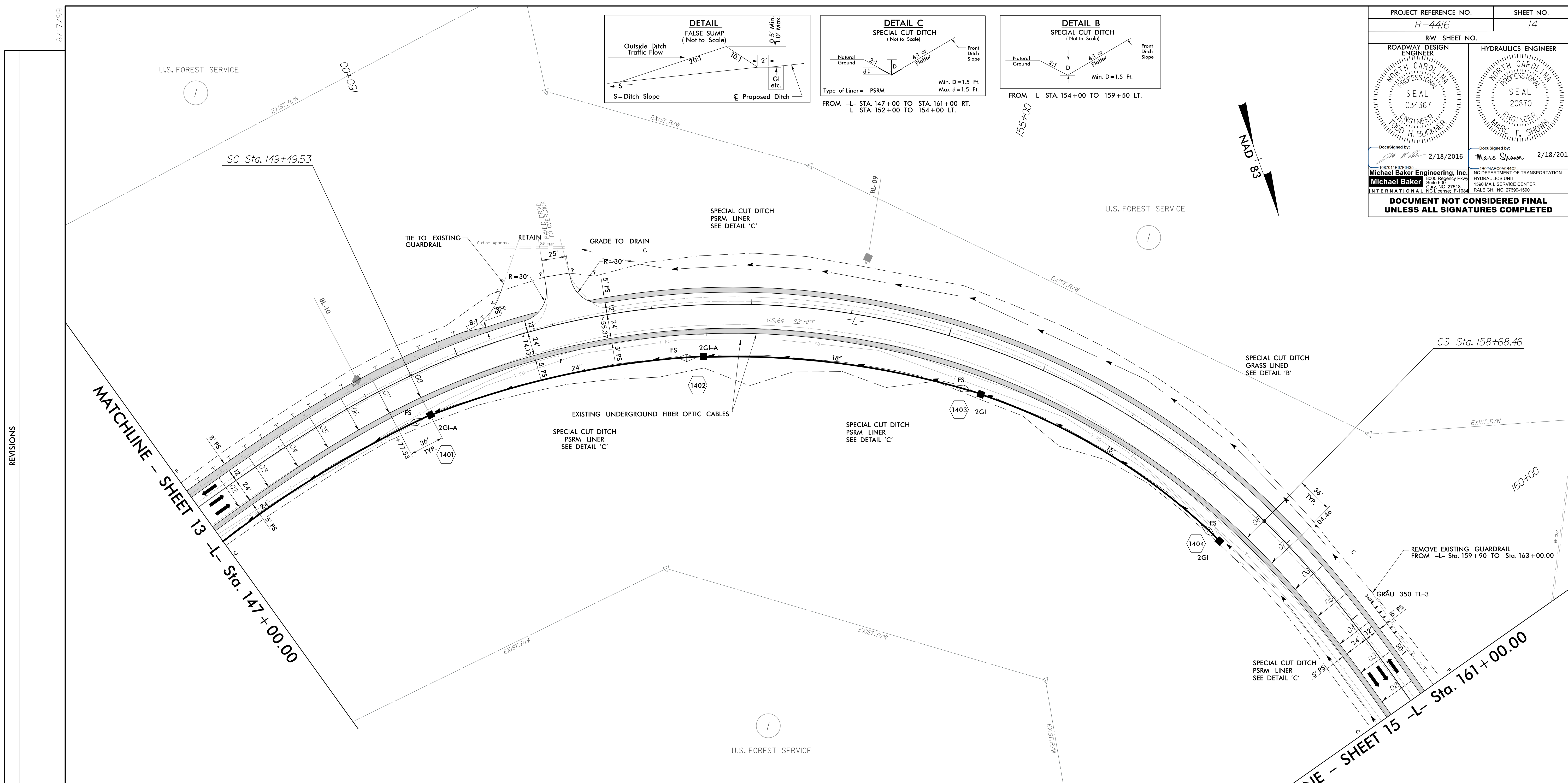
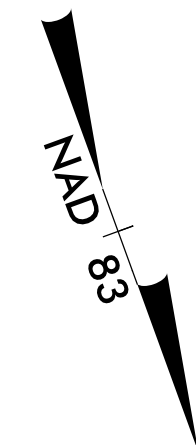
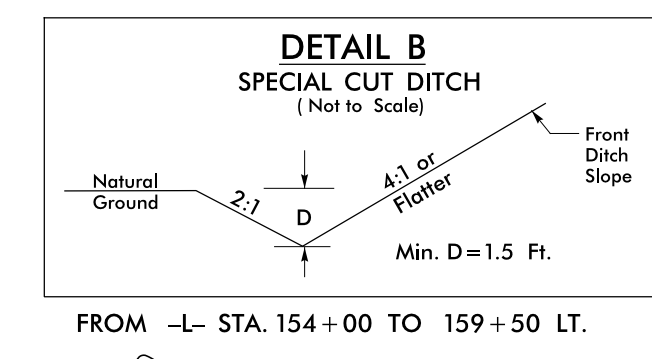
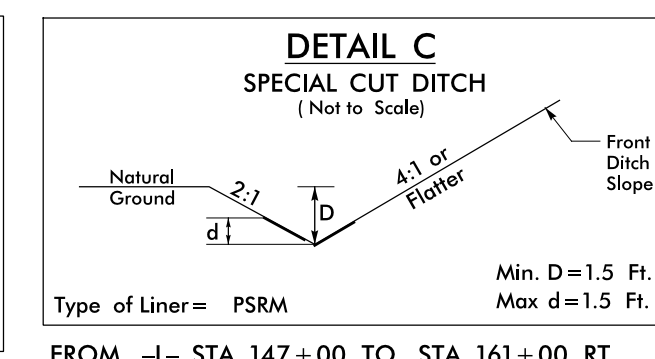
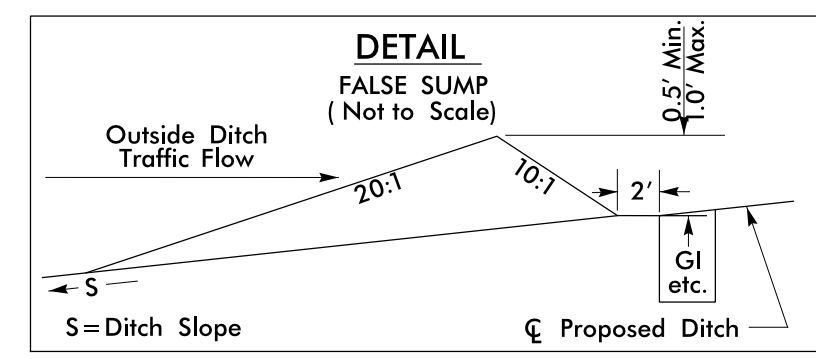


PROJECT REFERENCE NO. <i>R-4416</i>		SHEET NO. 14	
RW SHEET NO.			
ROADWAY DESIGN ENGINEER NORTH CAROLINA PROFESSIONAL SEAL 034367 LODD H. BUCKNER		HYDRAULICS ENGINEER NORTH CAROLINA PROFESSIONAL SEAL 20870 MARC T. SHOWN	
DocuSigned by: <i>L. Buckner</i> 2/18/2016		DocuSigned by: <i>Marc Shown</i> 2/18/2016	
Michael Baker Engineering, Inc. 1500 Regency Park Suite 600 Cary, NC 27518 INTERNATIONAL NC License: F-1084		NC DEPARTMENT OF TRANSPORTATION HYDRAULICS UNIT 1590 MAIL SERVICE CENTER RALEIGH, NC 27699-1590	
DOCUMENT NOT CONSIDERED FINAL UNLESS ALL SIGNATURES COMPLETED			



-L- LINE		
<i>PIs Sta 148+53.89</i>	<i>PI Sta 154+74.98</i>	<i>PIs Sta 159+64.79</i>
<i>Os = 10° 53' 04.9"</i>	<i>Δ = 69° 27' 36.2" (RT)</i>	<i>Os = 10° 53' 04.9"</i>
<i>Ls = 288.00'</i>	<i>D = 7' 33' 31.7"</i>	<i>Ls = 288.00'</i>
<i>LT = 192.36'</i>	<i>L = 918.93'</i>	<i>LT = 192.36'</i>
<i>ST = 96.33'</i>	<i>T = 525.45'</i>	<i>ST = 96.33'</i>
	<i>R = 758.00'</i>	
	<i>Ds = 50mph</i>	
	<i>SE = .08</i>	

FOR -L- PROFILE SEE SHEET 25

REVISIONS

2/18/2016 2:28:18 PM L:\4416.rdy_psh14.dgn
USER: loddh