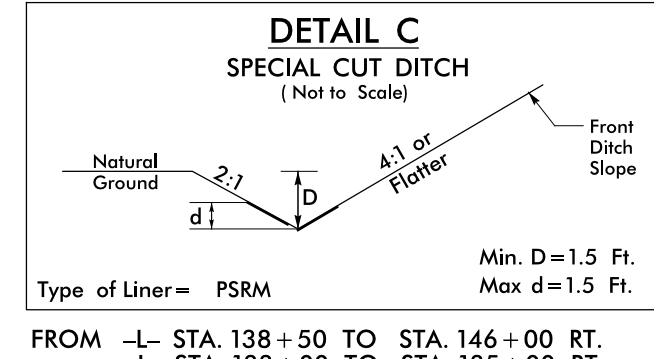
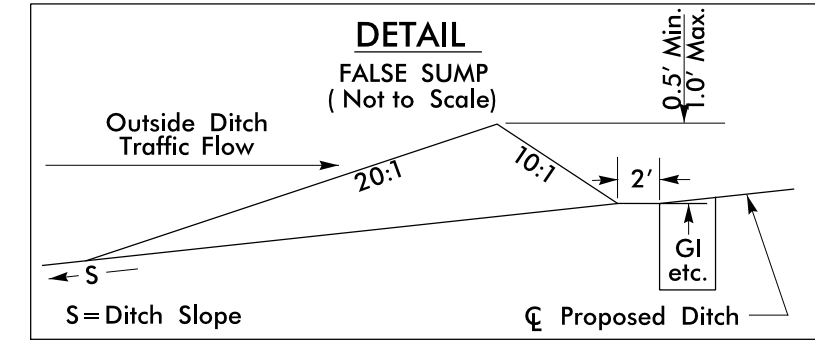
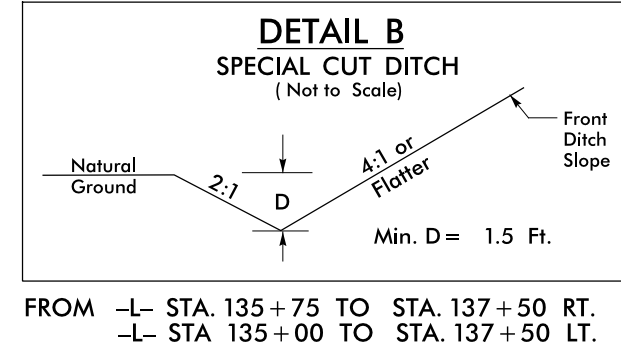


PROJECT REFERENCE NO. R-4416	SHEET NO. 13
RW SHEET NO.	
ROADWAY DESIGN ENGINEER SEAL 034367 TODD H. BUCKNER	HYDRAULICS ENGINEER SEAL 20870 MARC T. SHOWN
DocuSigned by: 2/18/2016	DocuSigned by: Marc Shown 2/18/2016
Michael Baker Engineering, Inc. 1500 Regency Park Suite 600 Raleigh, NC 27618 INTERNATIONAL License: F-1084	NC DEPARTMENT OF TRANSPORTATION HYDRAULICS UNIT 1590 MAIL SERVICE CENTER RALEIGH, NC 27699-1590

**DOCUMENT NOT CONSIDERED FINAL
UNLESS ALL SIGNATURES COMPLETED**

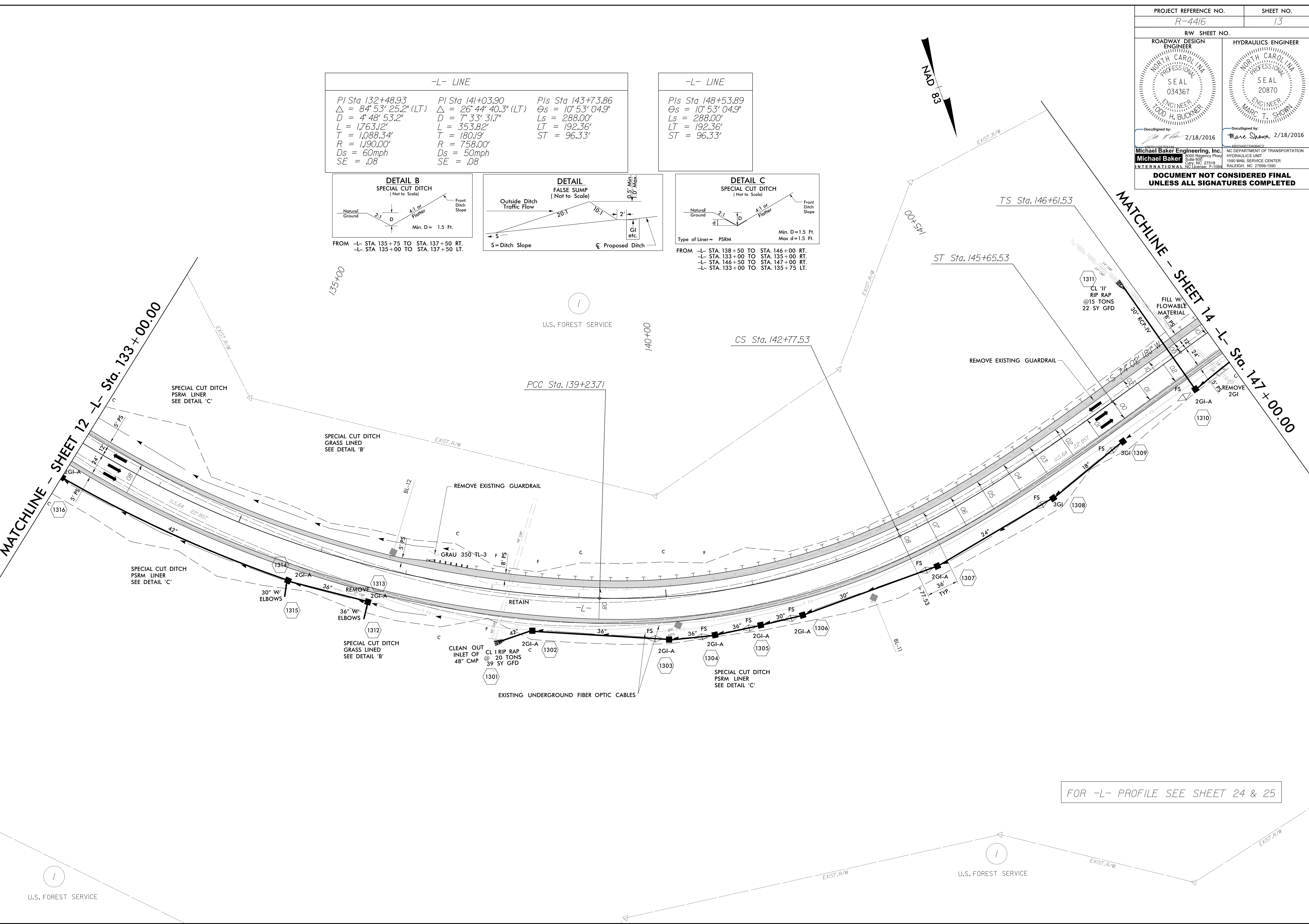
-L- LINE			-L- LINE		
PI Sta 132+48.93	PI Sta 141+03.90	PIs Sta 143+73.86	PIs Sta 148+53.89		
$\Delta = 84' 53" 25.2" (LT)$	$\Delta = 26' 44" 40.3" (LT)$	$\Theta_s = 10' 53" 04.9"$	$\Theta_s = 10' 53" 04.9"$		
$D = 4' 48" 53.2"$	$D = 7' 33" 31.7"$	$L_s = 288.00'$	$L_s = 288.00'$		
$L = 1,763.12'$	$L = 353.82'$	$LT = 192.36'$	$LT = 192.36'$		
$T = 1,088.34'$	$T = 180.19'$	$ST = 96.33'$	$ST = 96.33'$		
$R = 1,190.00'$	$R = 758.00'$				
$D_s = 60\text{mph}$	$D_s = 50\text{mph}$				
$SE = .08$	$SE = .08$				



FROM -L- STA. 135+75 TO STA. 137+50 RT.
-L- STA. 135+00 TO STA. 137+50 LT.

FROM -L- STA. 138+50 TO STA. 146+00 RT.
-L- STA. 133+00 TO STA. 135+00 RT.
-L- STA. 146+50 TO STA. 147+00 RT.
-L- STA. 133+00 TO STA. 135+75 LT.

8/17/99
REVISIONS
2/18/2016 2:28:17 PM R-4416.rdy_psh13.dgn
USER: todd.buckner



FOR -L- PROFILE SEE SHEET 24 & 25