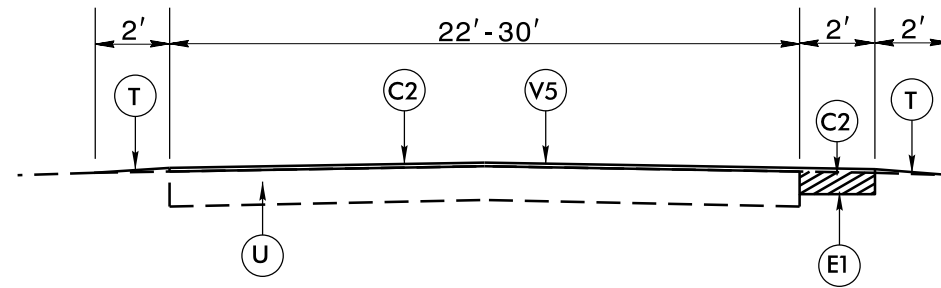
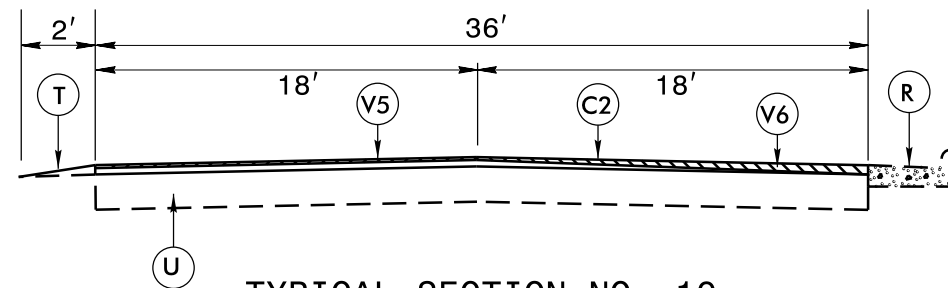


PAVEMENT SCHEDULE	
C1	PROP. APPROX. 1½" ASPHALT CONCRETE SURFACE COURSE, TYPE SF9.5A, AT AN AVERAGE RATE OF 165 LBS. PER SQ. YD.
C2	PROP. APPROX. 1½" ASPHALT CONCRETE SURFACE COURSE, TYPE S9.5B, AT AN AVERAGE RATE OF 168 LBS. PER SQ. YD.
C3	PROP. VAR. DEPTH ASPHALT CONCRETE SURFACE COURSE, TYPE SF9.5A, AT AN AVERAGE RATE OF 110 LBS. PER SQ. YD. PER 1" DEPTH. TO BE PLACED IN LAYERS NOT TO EXCEED 1½" IN DEPTH
D	PROP. APPROX. 2½" ASPHALT CONCRETE INTERMEDIATE COURSE, TYPE I19.0B, AT AN AVERAGE RATE OF 285 LBS. PER SQ. YD.
D1	PROP. APPROX. 4" ASPHALT CONCRETE INTERMEDIATE COURSE, TYPE I19.0B, AT AN AVERAGE RATE OF 456 LBS. PER SQ. YD.
D2	PROP. VAR DEPTH ASPHALT CONC. INTERMEDIATE COURSE, TYPE I19.0B, AT AN AVERAGE RATE OF 114 LBS PER SQ. YD. PER 1" DEPTH TO BE PLACED IN LAYERS NOT LESS THAN 2½" NOR GREATER THAN 4" IN DEPTH.
E1	PROP. APPROX. 5½" ASPHALT CONCRETE BASE COURSE, TYPE B25.0B, AT AN AVERAGE RATE OF 627 LBS. PER SQ. YD. FOR 2' WIDENING AT INSIDE CURVE RADII, AS DIRECTED BY THE ENGINEER
F	#6M MAT COAT
R	EXISTING CURB AND GUTTER
V1	0" - 1½" MILLING AT CURB & GUTTER
V2	0" - 2" MILLING AT CURB & GUTTER
V3	1½" MILLING
V4	2½" OR 4" MILLING AT ALL DESIGNATED DISTRESSED AREAS, WITH A VARIABLE WIDTH FROM 9' - 12'
V5	¾" MILLING
V6	¾" - 1½" MILLING FROM THE CENTER OF THE ROADWAY TO THE EDGE OF THE ROADWAY
T	SHOULDER RECONSTRUCTION WITH AGGREGATE SHOULDER BORROW
U	EXISTING PAVEMENT
W	WEDGING



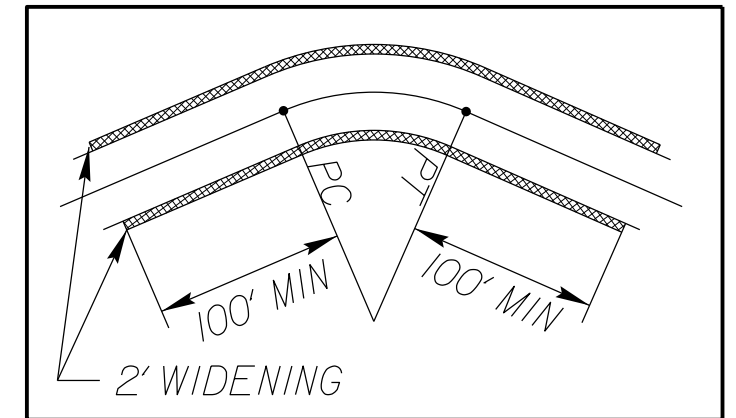
TYPICAL SECTION NO. 9

- INCLUDES INSIDE CURVE WIDENING. SEE DETAIL.
- INCLUDES 2.5" MILL AND FILL PAVEMENT REPAIR AS DIRECTED BY ENGINEER
- INCLUDES MILLING ON ASPHALT BRIDGE DECKS AND APPROACHES OR AS DIRECTED BY THE ENGINEER

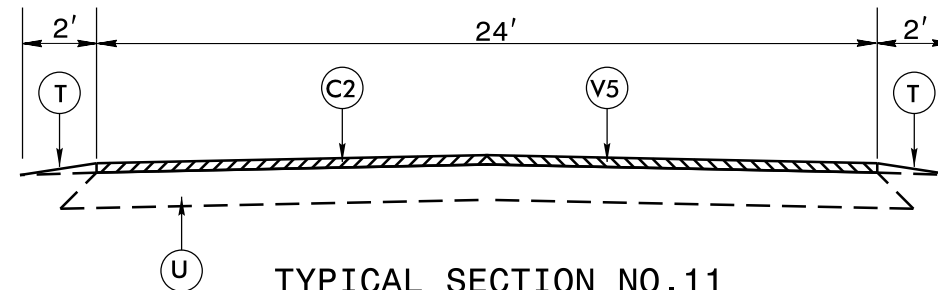


TYPICAL SECTION NO. 10

- INCLUDES 2.5" MILL AND FILL PAVEMENT REPAIR AS DIRECTED BY ENGINEER

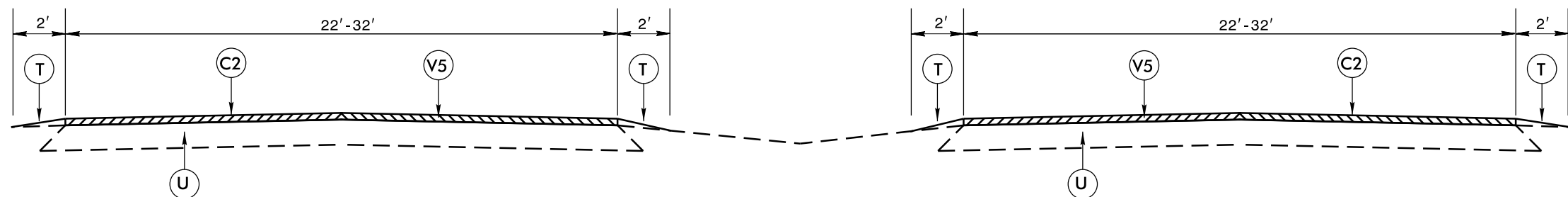


INSIDE CURVE WIDENING
MAPS 1, 4, 9, 10, 14, & 15



TYPICAL SECTION NO. 11

- INCLUDES 2.5" MILL AND FILL PAVEMENT REPAIR AS DIRECTED BY ENGINEER



TYPICAL SECTION NO. 12

- INCLUDES 2.5" MILL AND FILL PAVEMENT REPAIR AS DIRECTED BY ENGINEER

6/12/09
 30-MAR-2016 16:23
 S:\Contracts\Contract_9535\Resurfacing Projects\Division 6\Bladen Columbus May 2016\REVISED TYP_Rdwy.typ 3.dgn
 6/12/09