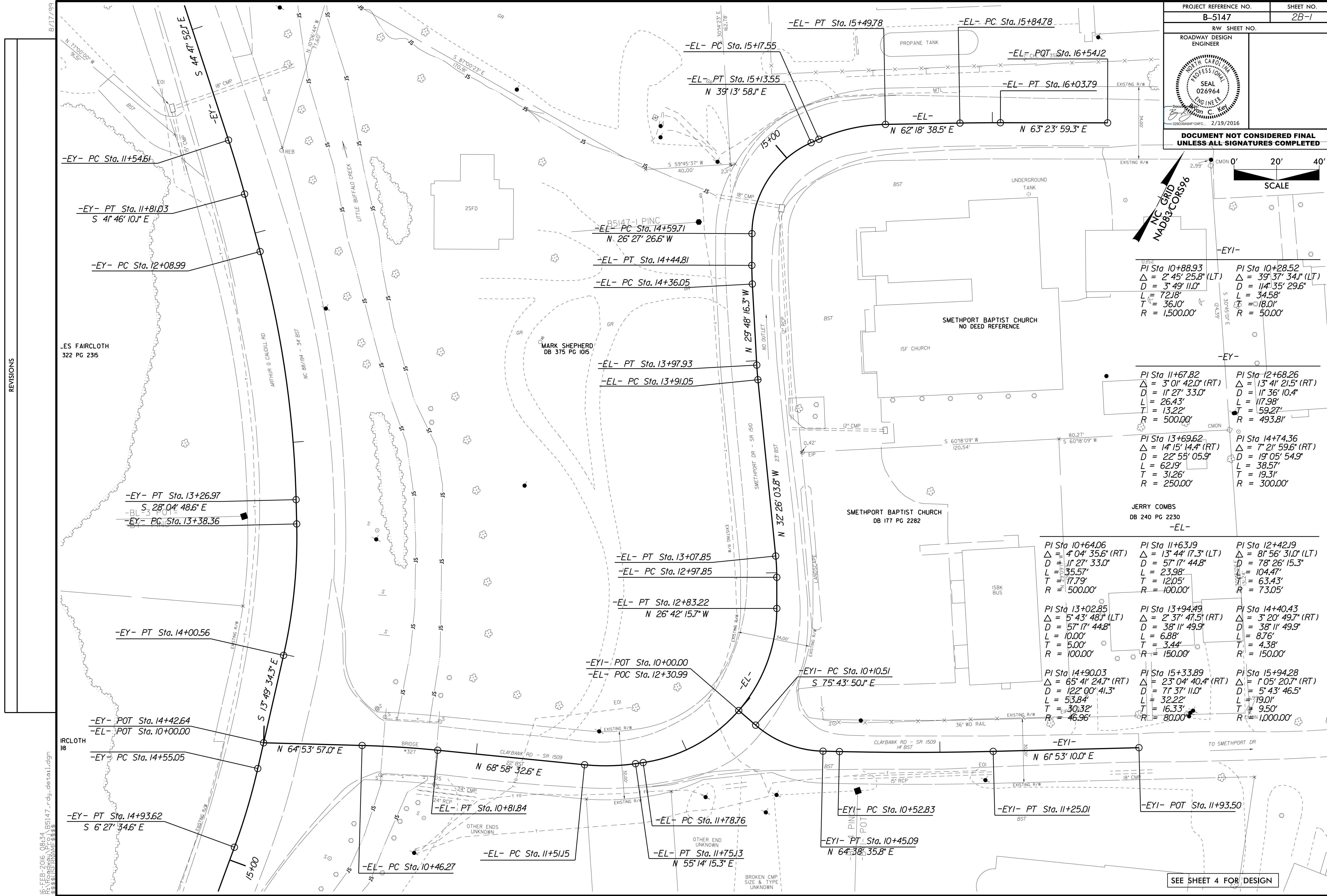


NC GRID  
NAD83 CORS96



**-EY-**

PI Sta 10+88.93 Δ = 2' 45' 25.8" (LT) D = 3' 49' 11.0" L = 72.18' T = 36.10' R = 1500.00'	PI Sta 10+28.52 Δ = 39' 37' 34.1" (LT) D = 114' 35' 29.6" L = 34.58' T = 18.01' R = 500.00'
--	--

**-EY-**

PI Sta 11+67.82 Δ = 3' 01' 42.0" (RT) D = 11' 27' 33.0" L = 26.43' T = 13.22' R = 500.00'	PI Sta 12+68.26 Δ = 13' 41' 21.5" (RT) D = 11' 36' 10.4" L = 117.98' T = 59.27' R = 493.81'
--	--

**-EY-**

PI Sta 13+69.62 Δ = 14' 15' 14.4" (RT) D = 22' 55' 05.9" L = 62.19' T = 31.26' R = 250.00'	PI Sta 14+74.36 Δ = 7' 21' 59.6" (RT) D = 19' 05' 54.9" L = 38.57' T = 19.31' R = 300.00'
---	--

**-EL-**

JERRY COMBS  
DB 240 PG 2230

PI Sta 10+64.06 Δ = 4' 04' 35.6" (RT) D = 11' 27' 33.0" L = 35.57' T = 17.79' R = 500.00'	PI Sta 11+63.19 Δ = 13' 44' 17.3" (LT) D = 57' 17' 44.8" L = 23.98' T = 12.05' R = 100.00'	PI Sta 12+42.19 Δ = 8' 56' 31.0" (LT) D = 78' 26' 15.3" L = 104.47' T = 63.43' R = 73.05'
--	---	--

PI Sta 13+02.85 Δ = 5' 43' 48.1" (LT) D = 57' 17' 44.8" L = 10.00' T = 5.00' R = 100.00'	PI Sta 13+94.49 Δ = 2' 37' 47.5" (RT) D = 38' 11' 49.9" L = 6.88' T = 3.44' R = 150.00'	PI Sta 14+40.43 Δ = 3' 20' 49.7" (RT) D = 38' 11' 49.9" L = 8.76' T = 4.38' R = 150.00'
---	--	--

PI Sta 14+90.03 Δ = 65' 41' 24.7" (RT) D = 122' 00' 41.3" L = 53.84' T = 30.32' R = 46.96'	PI Sta 15+33.89 Δ = 23' 04' 40.4" (RT) D = 71' 37' 11.0" L = 32.22' T = 16.33' R = 80.00'	PI Sta 15+94.28 Δ = 1' 05' 20.7" (RT) D = 5' 43' 46.5" L = 19.01' T = 9.50' R = 1000.00'
---	--	---

SEE SHEET 4 FOR DESIGN

REVISIONS

16-FEB-2016 08:34 B5147\_rdy\_detail.dgn  
3:58:58 PM  
8/17/99