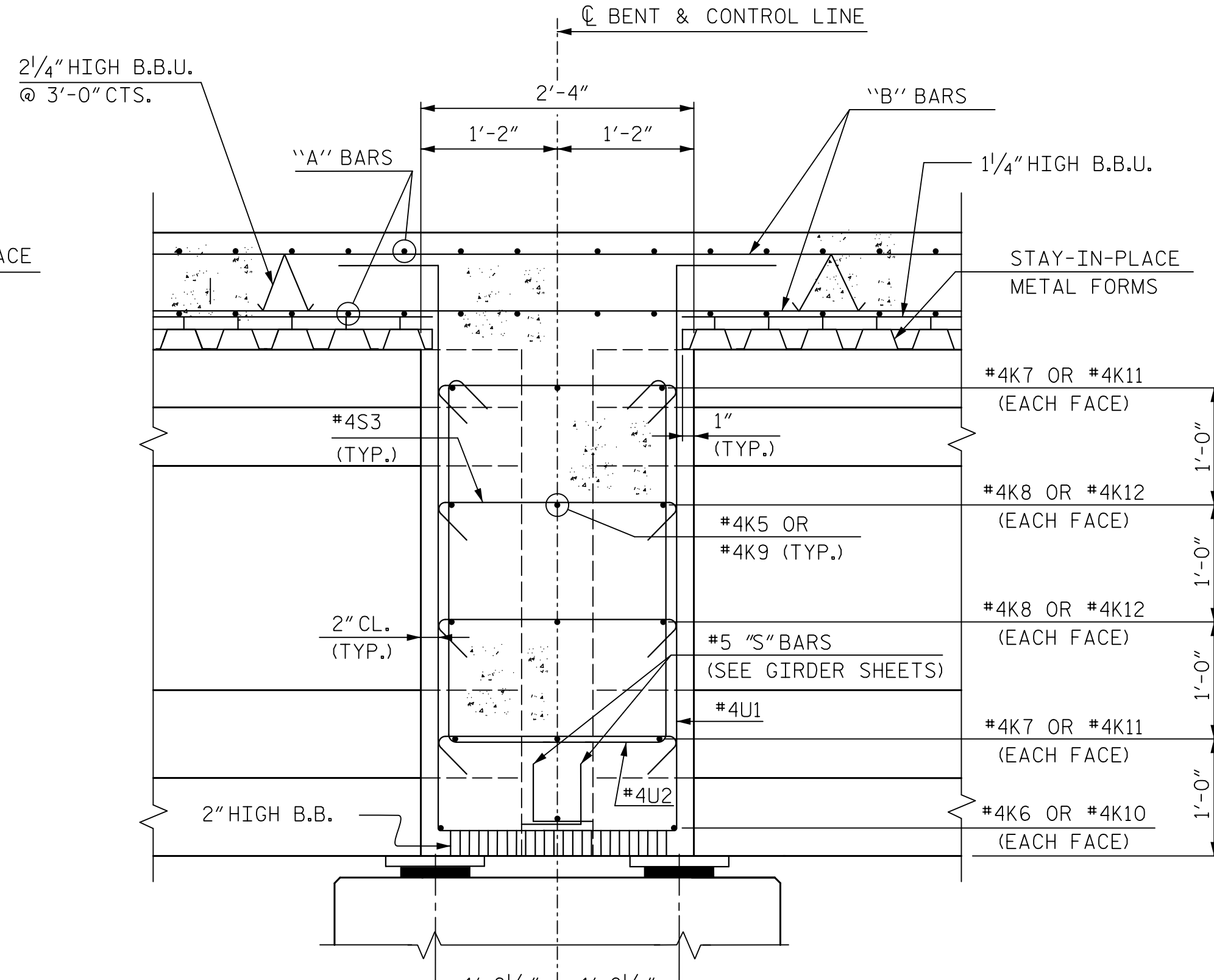
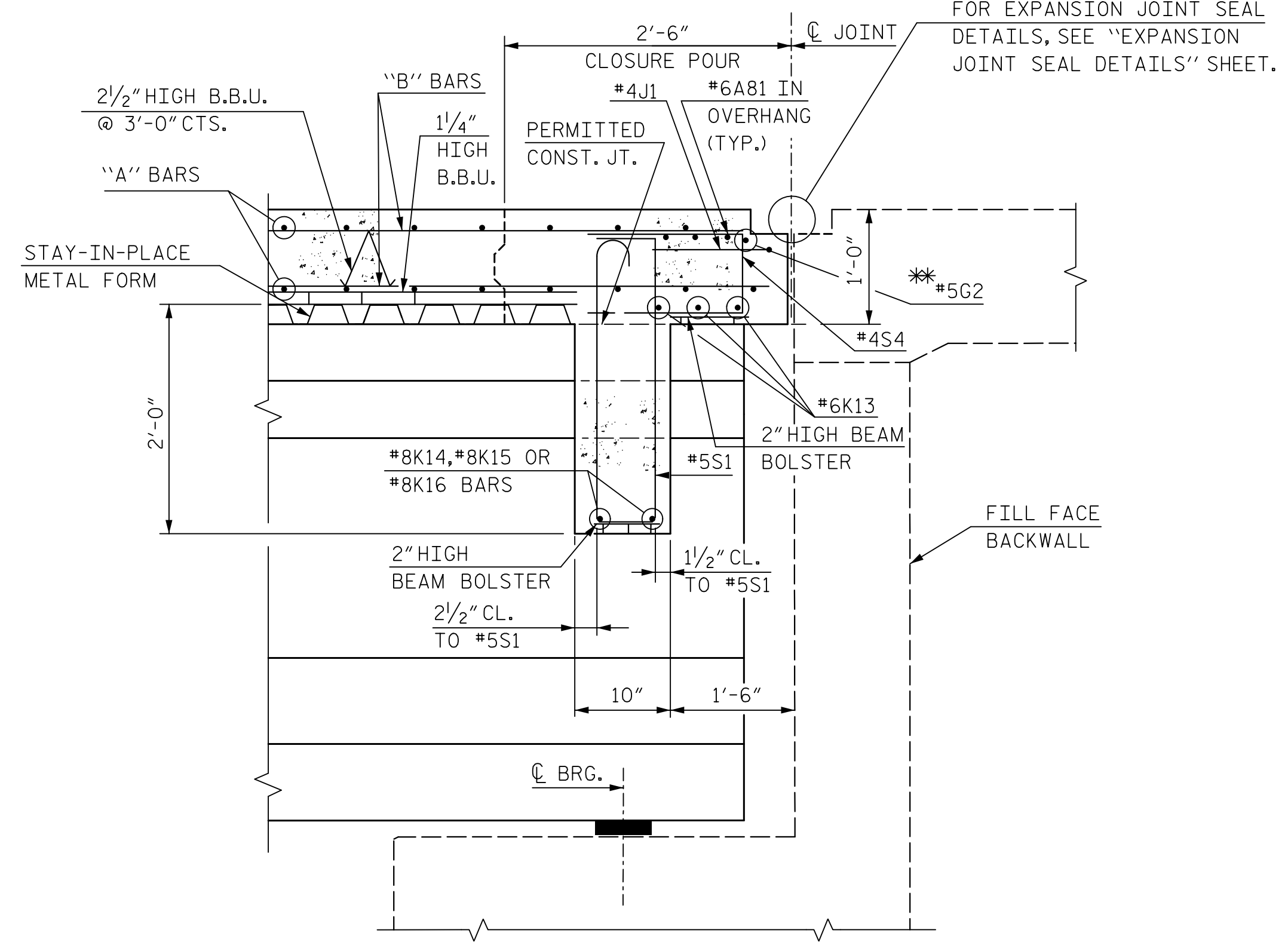


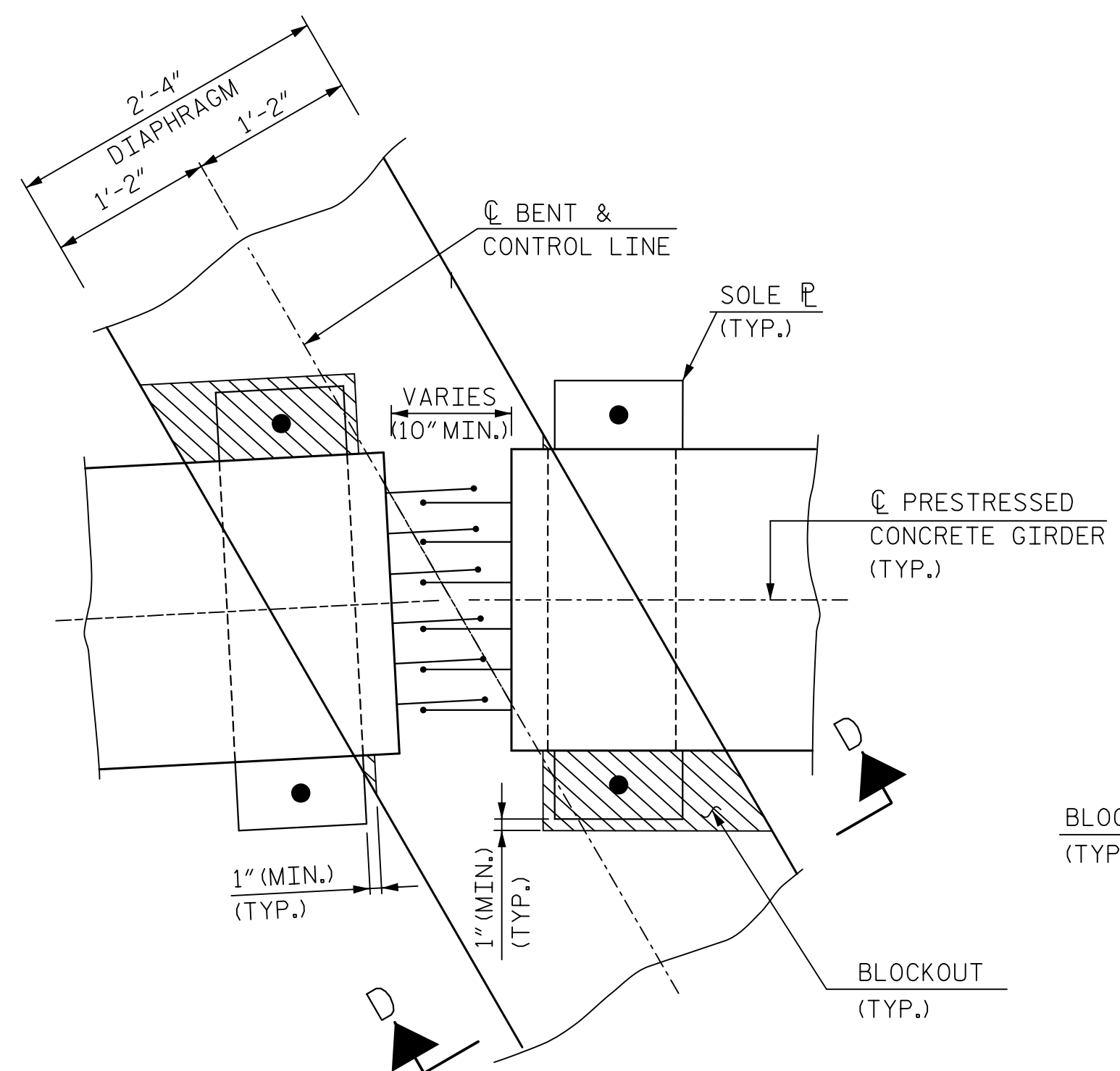
**SECTION A-A**  
(SECTION NORMAL THRU END BENT 1 DIAPHRAGM)  
\*\* #5 "G" BAR MAY BE SHIFTED SLIGHTLY AS NECESSARY TO CLEAR REINFORCING STEEL AND STIRRUPS.



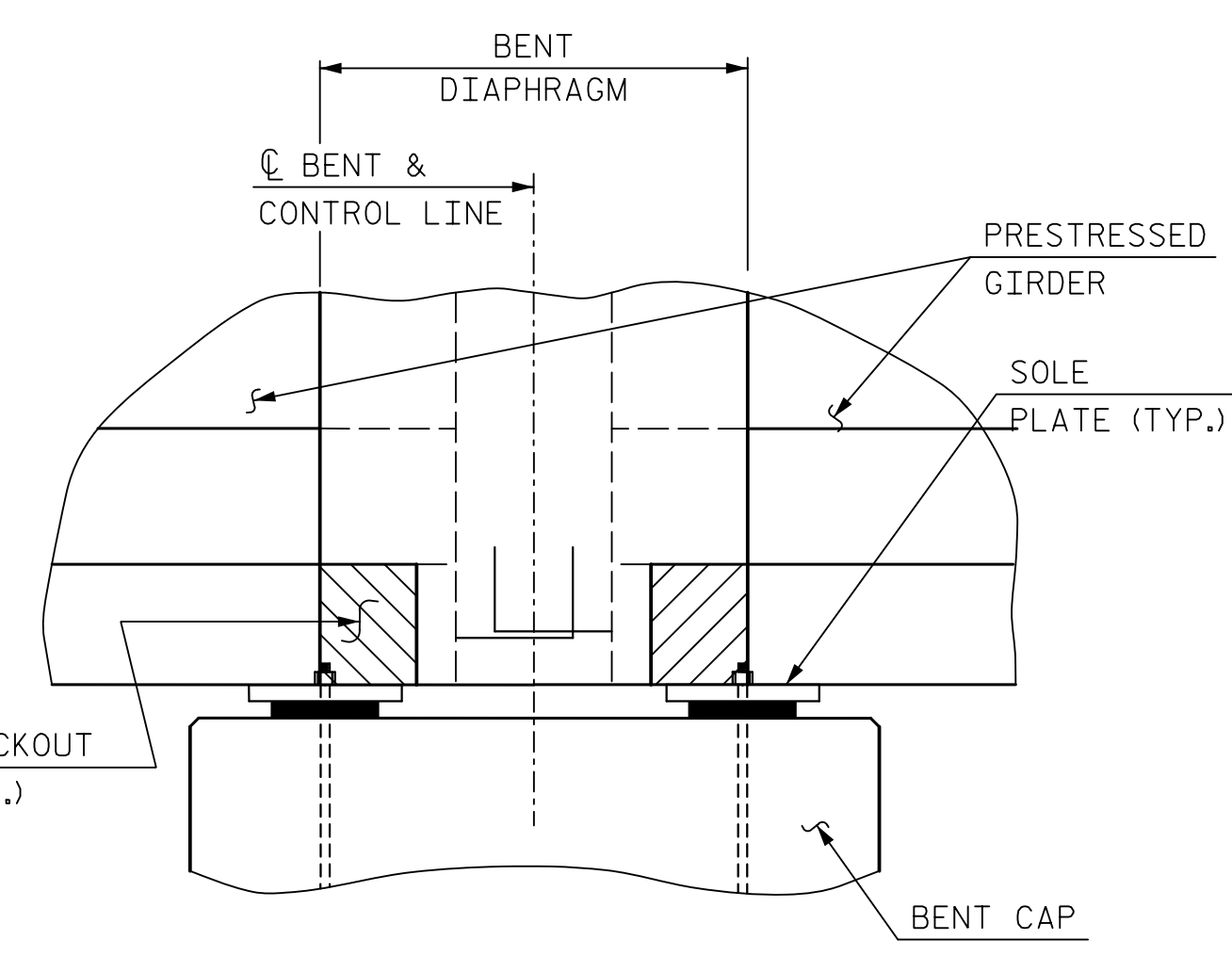
**SECTION B-B**  
(SECTION NORMAL THRU BENT 1 & BENT 2 DIAPHRAGM )  
NOTE:  
BENT DIAPHRAGM SHALL BE CAST MONOLITHICALLY WITH DECK SLAB.



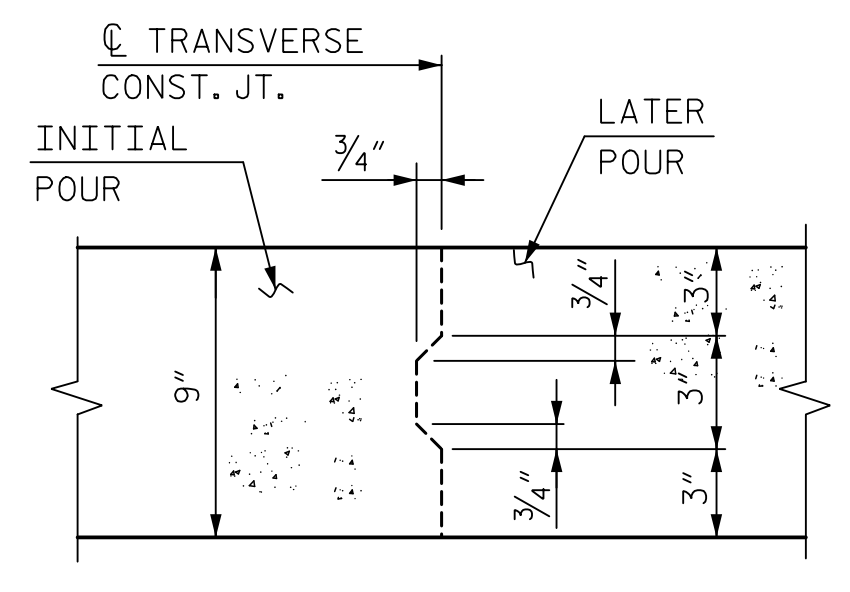
**SECTION C-C**  
(SECTION NORMAL THRU END BENT 2 DIAPHRAGM)  
\*\* #5 "G" BAR MAY BE SHIFTED SLIGHTLY AS NECESSARY TO CLEAR REINFORCING STEEL AND STIRRUPS.



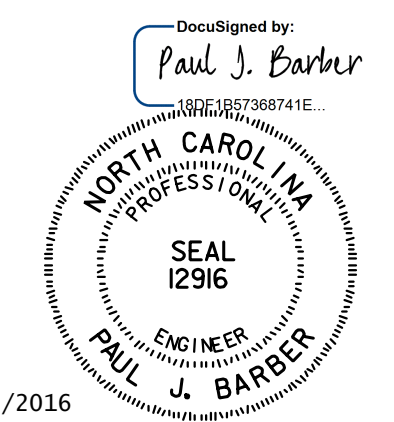
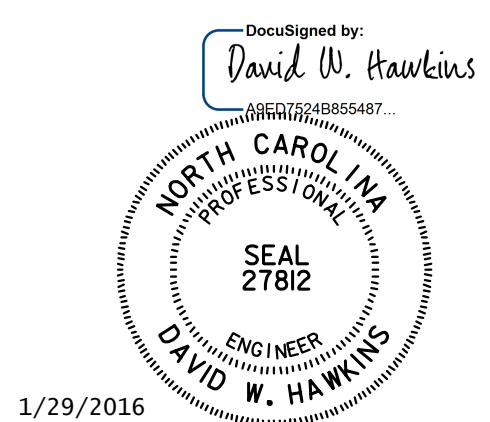
**PLAN VIEW**  
(AT INTERIOR BENTS )  
**BENT DIAPHRAGM BLOCKOUT DETAILS**



**SECTION D-D**



**TRANSVERSE CONSTRUCTION JOINT DETAIL**  
REINFORCING STEEL IN SLAB NOT SHOWN. LONGITUDINAL REINFORCING STEEL SHALL BE CONTINUOUS THROUGH JOINT.



PROJECT NO. B-4811  
RUTHERFORD COUNTY  
STATION: POC 15+25.00 -L-

SHEET 2 OF 2

STATE OF NORTH CAROLINA  
DEPARTMENT OF TRANSPORTATION  
RALEIGH

**SUPERSTRUCTURE**

**TYPICAL SECTIONS**

**HNTB** HNTB NORTH CAROLINA, P.C.  
NC License No. C-1554  
343 E. Six Forks Rd., Suite 200, Raleigh, N.C. 27609

DRAWN BY M. WRIGHT DATE 10/14  
CHECKED BY P. BARBER DATE 4/15 DWG. NO. 7

REVISIONS						SHEET NO.
NO.	BY	DATE	NO.	BY	DATE	S01-7
1			3			TOTAL SHEETS
2			4			42

**DOCUMENT NOT CONSIDERED FINAL UNLESS ALL SIGNATURES COMPLETED**