

TEMPORARY TRAFFIC CONTROL PHASING

NOTE: BEFORE BEGINNING CONSTRUCTION THE CONTRACTOR SHALL PLACE ADVANCE WORK ZONE WARNING SIGNS ALONG -L- LINE (US 64/74 ALT), BILLS CREEK RD. (SR 1008), PHEASANT ST., AND RAINBOW CIR. (SEE RSD 1101.01, SHEET 3 OF 3)

PHASE I

- STEP 1. USING RSD 1101.02 (SHEET 1 OF 15), CONSTRUCT TEMPORARY PAVEMENT UP TO EXISTING EDGE OF PAVEMENT ELEVATIONS AS FOLLOWS (SEE TMP-3 AND TMP-4):
- STA. 12+25+/- -L- TO STA. 14+20+/- -L-
 - STA. 16+60+/- -L- TO STA. 18+75+/- -L-
- USING RSD 1101.02 (SHEET 1 OF 15), WIDEN -L- LINE UP TO EXISTING EDGE OF PAVEMENT ELEVATIONS AS FOLLOWS (SEE CONSTRUCTION PLANS, TMP-3, AND TMP-4):
- STA. 18+75+/- -L- TO STA. 22+00+/- -L-
- USING RSD 1101.02 (SHEET 1 OF 15), PLACE PORTABLE CONCRETE BARRIER (ANCHORED AND UNANCHORED) AS SHOWN ON TMP-5 AND TMP-6.
- STEP 2. AWAY FROM TRAFFIC, CONSTRUCT -L- LINE, INCLUDING NEW BRIDGE AND ROADWAY APPROACHES, SHORING, AND DRAINAGE, UP TO BASE COURSE AS FOLLOWS (SEE CONSTRUCTION PLANS, TMP-5, AND TMP-6):
- STA. 12+50+/- -L- TO STA. 18+75+/- -L-
- USING RSD 1101.02 (SHEET 1 OF 15), WIDEN -L- LINE UP TO EXISTING EDGE OF PAVEMENT ELEVATIONS AS FOLLOWS (SEE CONSTRUCTION PLANS, TMP-5, AND TMP-6):
- STA. 10+45+/- -L- TO STA. 12+50+/- -L-
- USING RSD 1101.02 (SHEET 1 OF 15), INSTALL TEMPORARY SIGNALS, BUT DO NOT ACTIVATE (SEE SIGNAL PLANS AND TMP-7).

PHASE II

- STEP 1. USING RSD 1101.02 (SHEET 1 OF 15), RESET AND PLACE UNANCHORED PORTABLE CONCRETE BARRIER AS FOLLOWS (SEE TMP-7):
- STA. 12+20+/- -L- TO STA. 19+05+/- -L-
- USING RSD 1101.02 (SHEET 1 OF 15), PLACE TEMPORARY PAVEMENT MARKINGS AND MARKERS AS SHOWN ON TMP-7.
- USING RSD 1101.02 (SHEET 1 OF 15), INSTALL TEMPORARY WARNING SIGNS FOR TEMPORARY SIGNALS AS SHOWN ON TMP-7.
- ACTIVATE TEMPORARY SIGNALS, SEE SIGNAL PLANS.
- SHIFT TRAFFIC FROM A TWO-LANE, TWO WAY PATTERN TO A ONE-LANE, TWO WAY TRAFFIC PATTERN.

PHASE III

- STEP 1. USING RSD 1101.02 (SHEET 1 OF 15), CONSTRUCT -L- LINE, INCLUDING DRAINAGE, PROPOSED GUARDRAIL, AND DRIVEWAYS, UP TO BUT NOT INCLUDING THE FINAL LAYER OF SURFACE COURSE AS FOLLOWS (SEE CONSTRUCTION PLANS, AND TMP-9):
- STA. 10+50+/- -L- TO STA. 13+00+/- -L-
 - STA. 18+00+/- -L- TO STA. 21+64+/- -L-
- USING FLAGGERS, OBLITERATE EXISTING BRIDGE AS SHOWN ON TMP-9.
- STEP 2. USING RSD 1101.02 (SHEET 1 OF 15), REMOVE UNANCHORED PORTABLE CONCRETE BARRIER.
- USING RSD 1101.02 (SHEET 1 OF 15), PAVE THE FINAL LAYER OF SURFACE COURSE AS FOLLOWS:
- STA. 10+00+/- -L- TO STA. 22+00+/- -L-
- USING RSD 1101.02 (SHEET 1 OF 15), PLACE FINAL PAVEMENT MARKINGS AND MARKERS (SEE FINAL PAVEMENT MARKING PLAN).

ICT - 21 DAYS

CONTRACTOR SHALL WORK IN A CONTINUOUS MANNER TO COMPLETE THE FOLLOWING IN PHASE II, STEPS 2 THRU 3 IN 21 CALENDAR DAYS. (SEE INTERMEDIATE CONTRACT TIME AND SPECIAL PROVISIONS).

NOTE: GENERAL NOTE "A" IS NOT APPLICABLE DURING STEPS 2 AND 3.

STEP 2. AWAY FROM TRAFFIC, CONSTRUCT -L- LINE UP TO BASE COURSE AS FOLLOWS (SEE CONSTRUCTION PLANS, TMP-7, AND TMP-8):

- STA. 12+10+/- -L- TO STA. 14+15+/- -L-
- STA. 16+70+/- -L- TO STA. 18+75+/- -L-

- COMPLETE DRAINAGE AS SHOWN ON TMP-7.

- INSTALL PROPOSED GUARDRAIL AS SHOWN ON TMP-7.

STEP 3. USING RSD 1101.02 (SHEET 1 OF 15), REMOVE UNANCHORED PORTABLE CONCRETE BARRIER.

- USING RSD 1101.02 (SHEET 1 OF 15), PAVE UP TO BUT NOT INCLUDING THE FINAL LAYER OF SURFACE COURSE AS FOLLOWS:

- STA. 10+00+/- -L- TO STA. 22+00+/- -L-

- USING RSD 1101.02 (SHEET 1 OF 15), PLACE TEMPORARY PAVEMENT MARKINGS AND MARKERS AS FOLLOWS (SEE TMP-9):

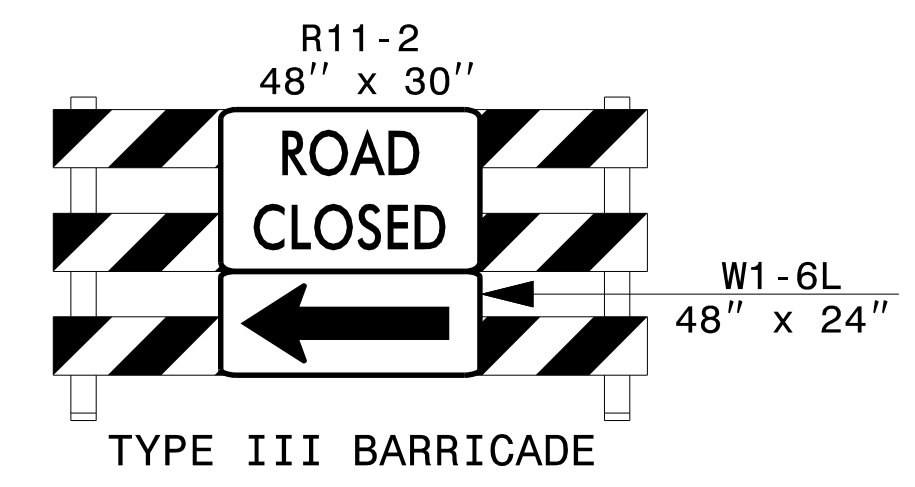
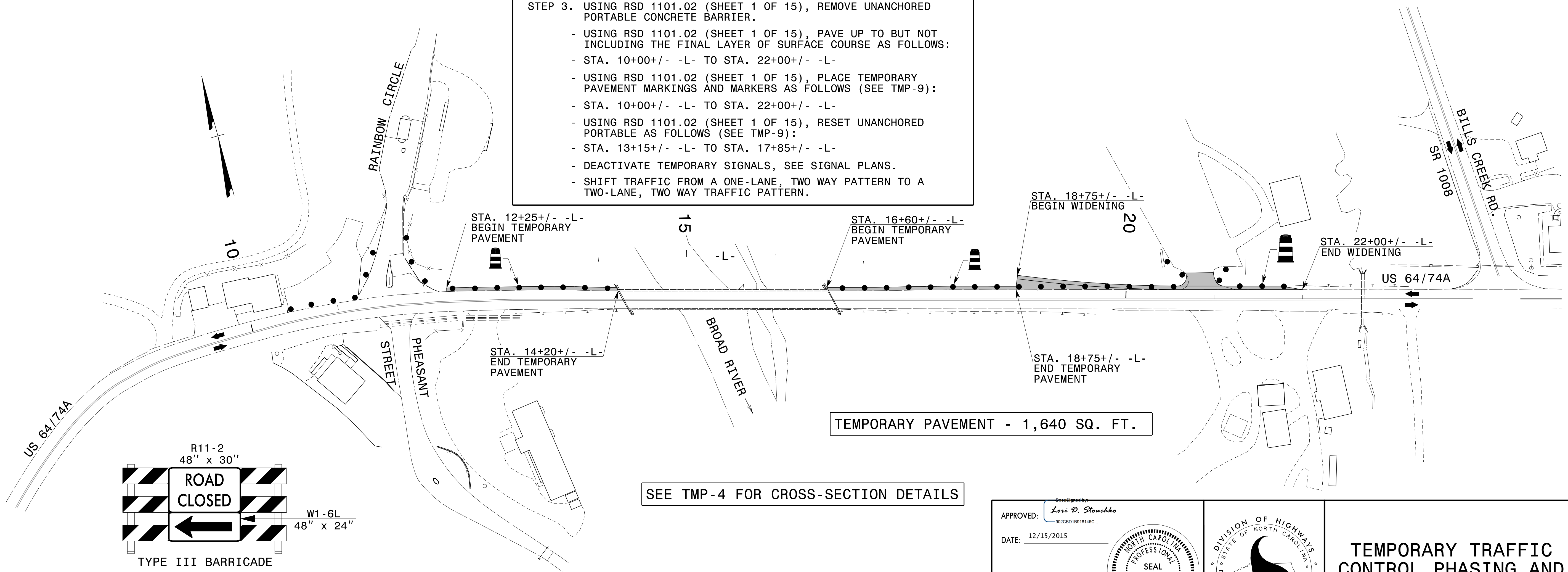
- STA. 10+00+/- -L- TO STA. 22+00+/- -L-

- USING RSD 1101.02 (SHEET 1 OF 15), RESET UNANCHORED PORTABLE AS FOLLOWS (SEE TMP-9):

- STA. 13+15+/- -L- TO STA. 17+85+/- -L-

- DEACTIVATE TEMPORARY SIGNALS, SEE SIGNAL PLANS.

- SHIFT TRAFFIC FROM A ONE-LANE, TWO WAY PATTERN TO A TWO-LANE, TWO WAY TRAFFIC PATTERN.

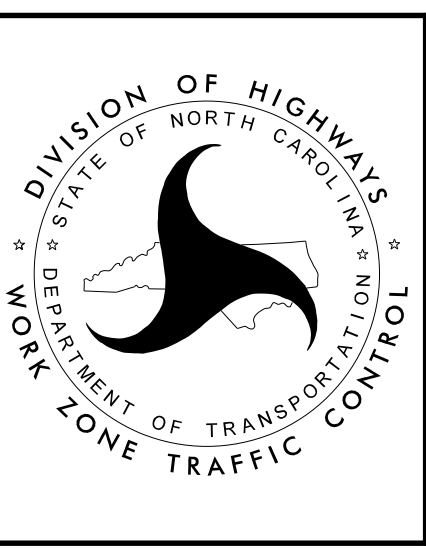


APPROVED: *Lori D. Stoucho*
002CB1818148C...

DATE: 12/15/2015

SEAL
 034437
 ENGINEER
 LORI D. STOUCHO

DOCUMENT NOT CONSIDERED FINAL UNLESS ALL SIGNATURES COMPLETED



TEMPORARY TRAFFIC CONTROL PHASING AND PHASE I DETAILS

12/15/2015 p:\t\p\proj\traffic\trafficcontrol\cp\b4811\TC_PHL_TMP03.dgn User:scodts