

**This electronic collection of documents is provided
for the convenience of the user
and is Not a Certified Document –**

**The documents contained herein were originally issued
and sealed by the individuals whose names and license
numbers appear on each page, on the dates appearing
with their signature on that page.**

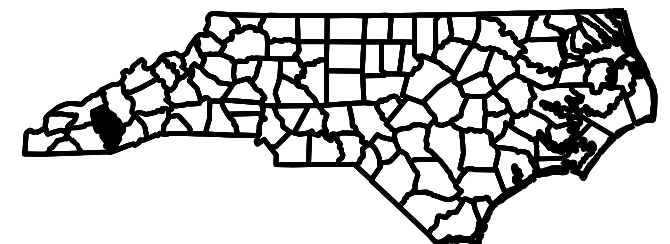
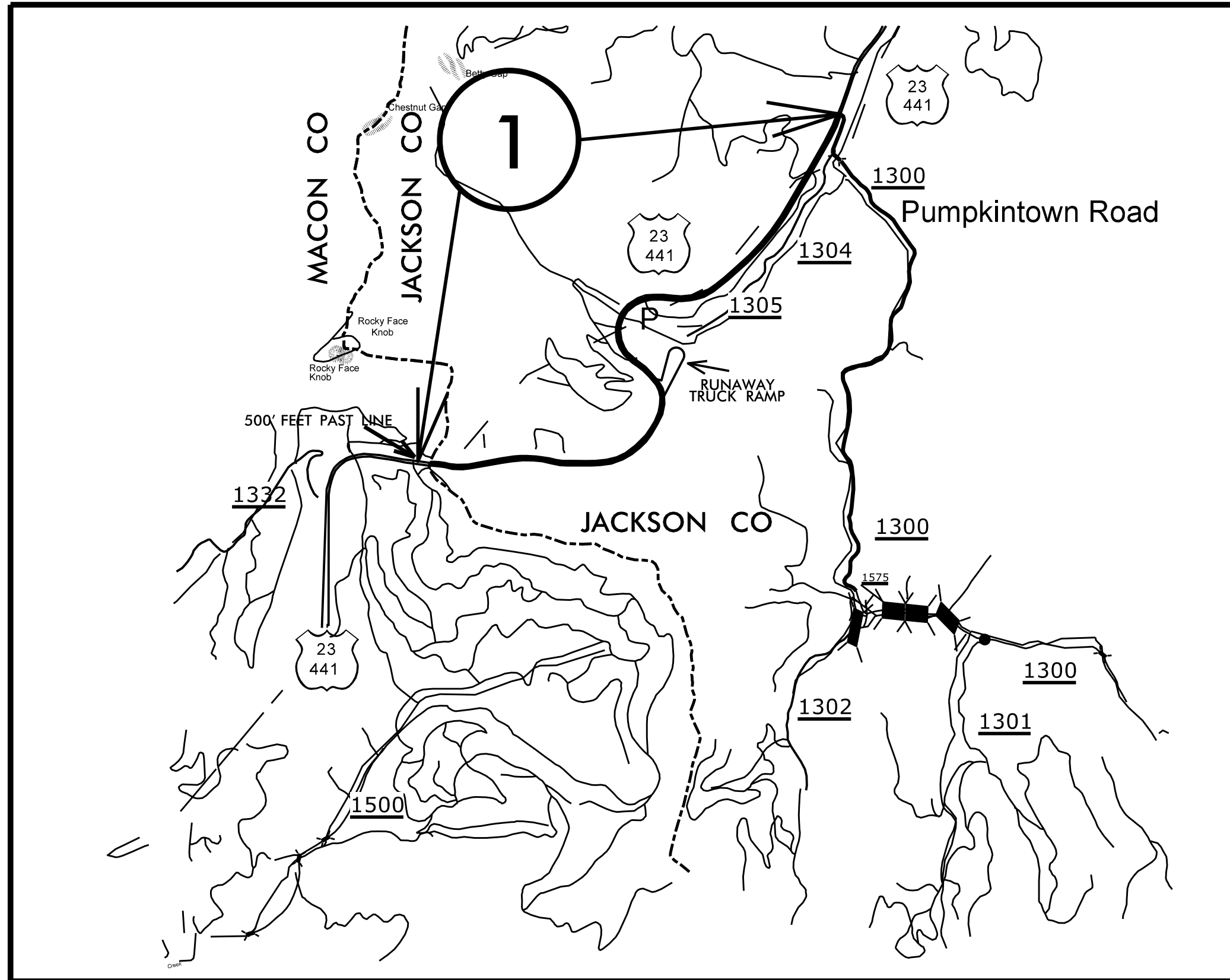
**This file or an individual page
shall not be considered a certified document.**

TIP PROJECT: N/A

CONTRACT:

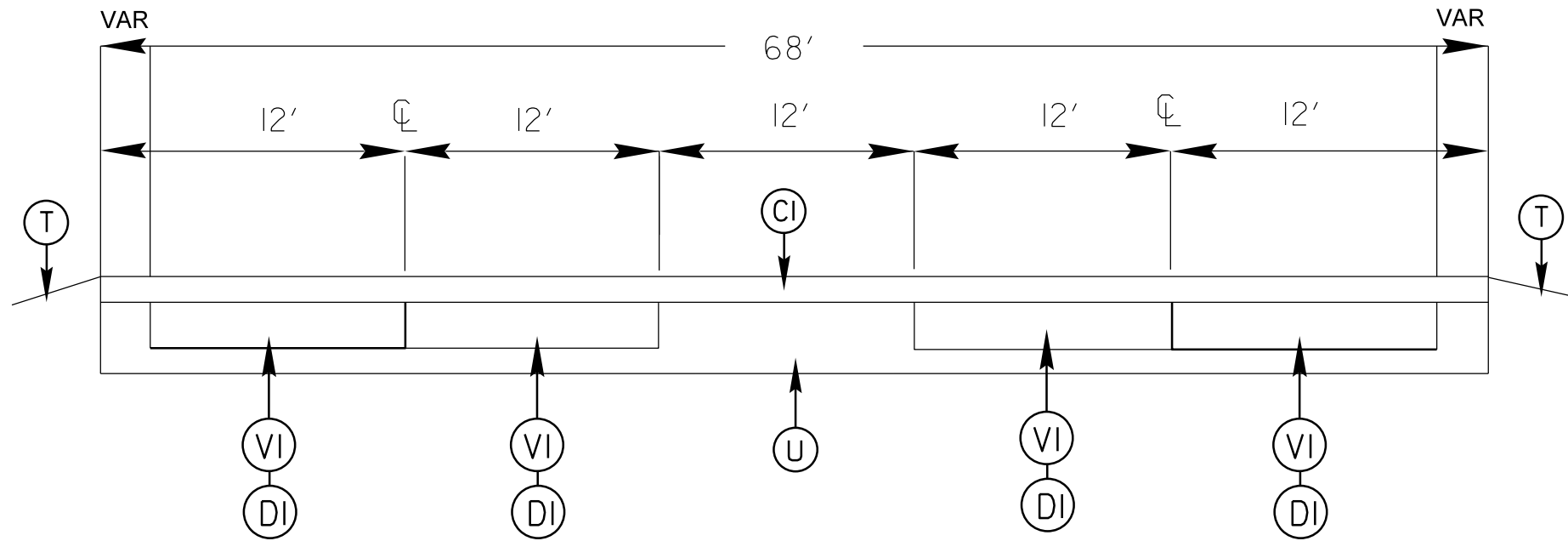
JACKSON COUNTY

PROJECT REFERENCE NO.	SHEET NO.	
2016CPT.14.13.10501.1	1	
STATE PROJECT	F.A. PROJECT NO.	DESCRIPTION
2016CPT.14.13.10501.1		

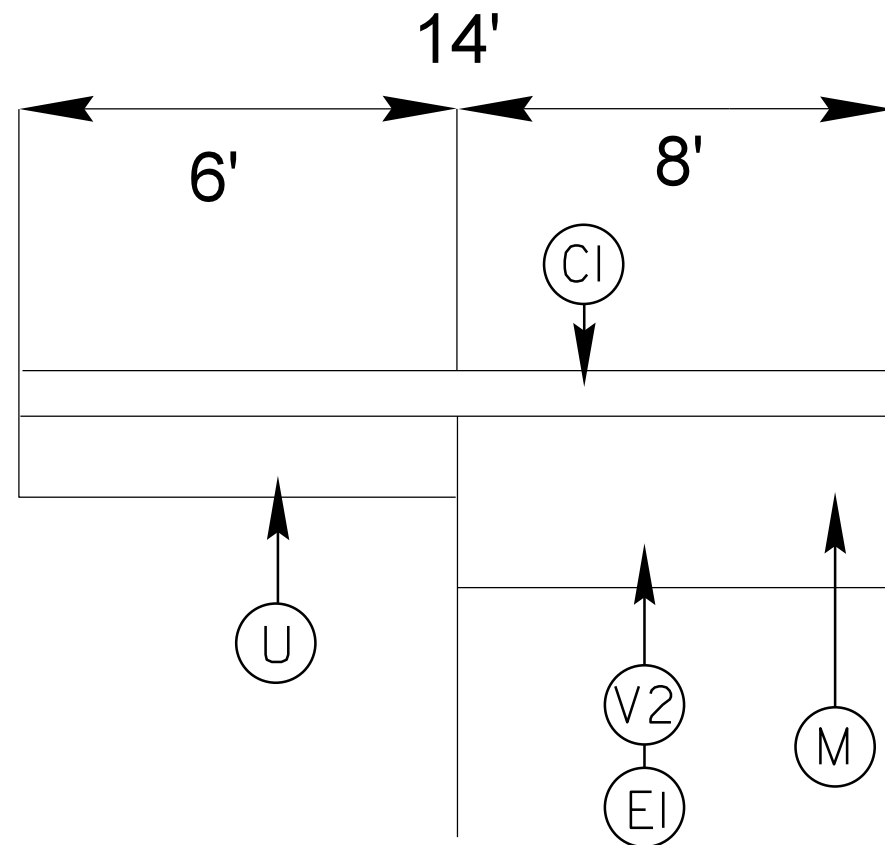


PROJECT REFERENCE NO.		SHEET NO.	
2016.CPT.14.13.10501.1		2	
STATE PROJECT	F.A. PROJECT NO.	DESCRIPTION	
2016CPT.14.13.10501.1			

TYPICAL 1



SHOULDER TYPICAL



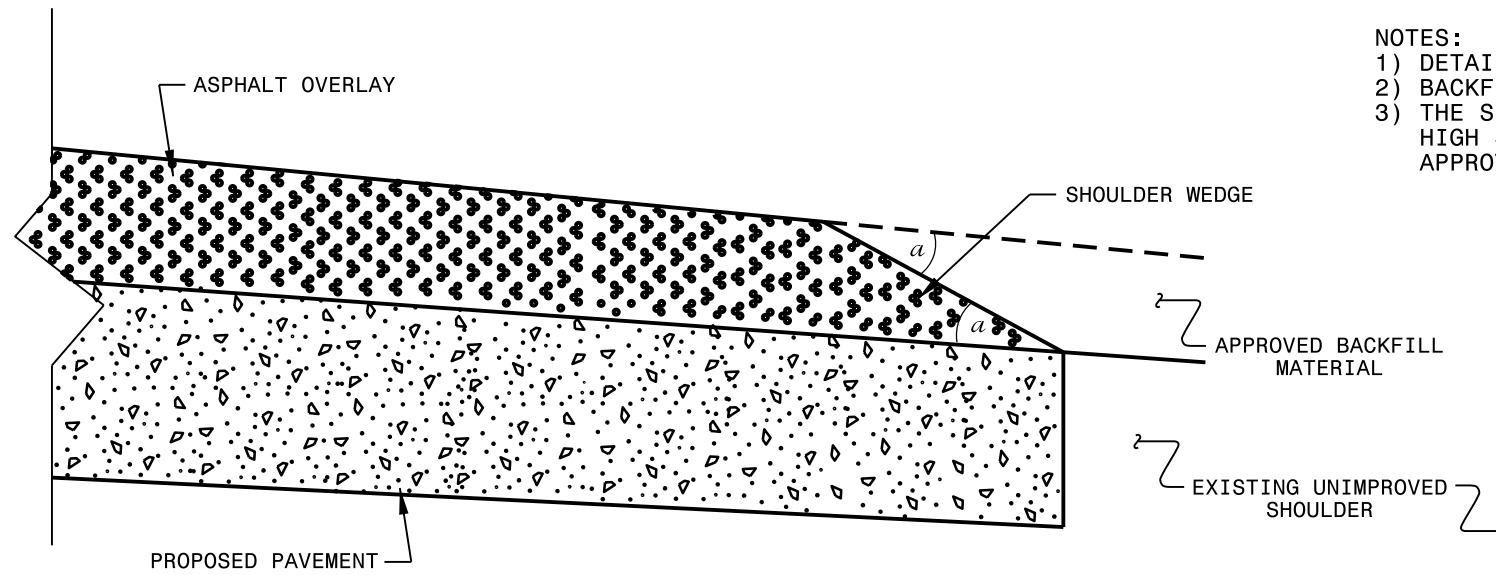
SURFACING SCHEDULE

ITEM NO	DESCRIPTION
C1	PROP. APPROX. 1 1/2" ASPHALT CONCRETE SURFACE COURSE, TYPE S9.5C, AT AN AVERAGE RATE OF 168 LBS. PER SQ. YD
D1	PROP. APPROX. 3" ASPHALT CONCRETE INTERMEDIATE COURSE, TYPE I19.0C, AT A AVERAGE RATE OF 342 LBS PER SQ. YD.
E1	PROP. APPROX. 5 1/2" ASPHALT CONCRETE BASE COURSE, TYPE B25.0B, AT AVERAGE RATE OF 627 LBS PER SQ. YD
M	SOIL OR BASE COURSE MATERIAL
V1	MILLED ASPHALT PAVEMENT 3 " IN DEPTH AT LOCATIONS AS DIRECTED BY PROJECT ENGINEER
V2	SHOULDER MILLING ASPHALT PAVEMENT 5 1/2 " IN DEPTH AT LOCATIONS AS DIRECTED BY PROJECT ENGINEER
T	SHOULDER RECONSTRUCTION
U	EXISTING ASPHALT

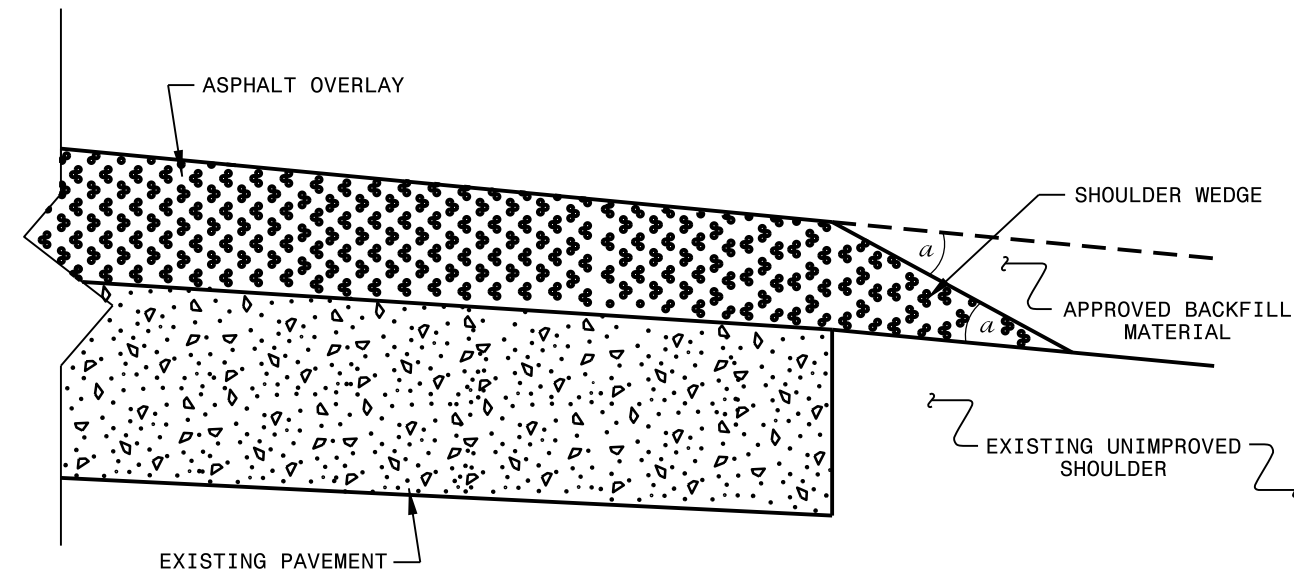
NOTE

SHOULDER TYPICAL IS LOCATED AT MACON CO LINE FOR EXTENDED WIDTH SHOULDER: APPROX 500' LENGTH 14' APPROX

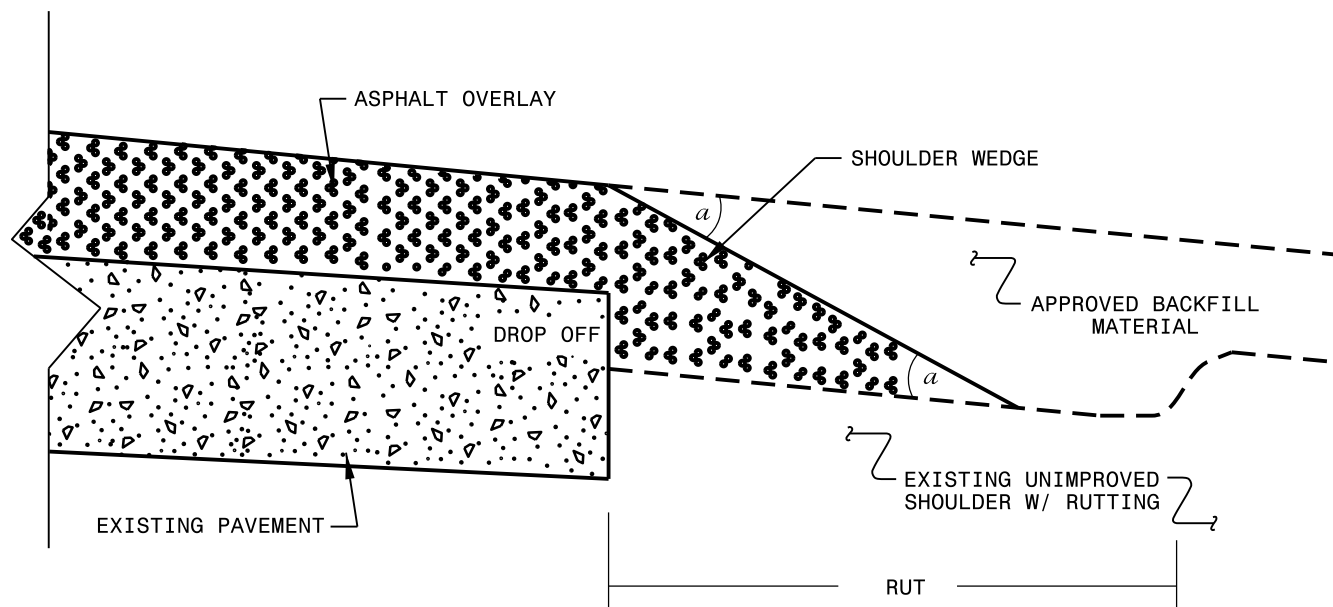
- NOTES:
- 1) DETAIL DOES NOT APPLY TO OGAFB AND ULTRA-THIN BONDED WEARING COURSE.
 - 2) BACKFILL SHOULDER WITH APPROVED MATERIAL.
 - 3) THE SHOULDER WEDGE DEVICE MAY BE DISENGAGED AT PAVED DRIVEWAYS, SIDE STREETS, HIGH SHOULDERS, AND OTHER LOCATIONS NOT FEASIBLE TO CONSTRUCT AS APPROVED BY THE ENGINEER.



SHOULDER WEDGE DETAIL
 (Resurfacing Projects w/ Widening or
 with Existing Paved Shoulder having no dropoffs)



SHOULDER WEDGE DETAIL
 (Resurfacing Projects w/ NO Widening)



SHOULDER WEDGE DETAIL
 (Resurfacing Adjacent to
 Rutted Shoulder)

- SHOULDER WEDGE ANGLE = 30°

CONTRACT STANDARDS AND DEVELOPMENT UNIT	
Office 919-707-6950	FAX 919-250-4119
SHOULDER WEDGE DETAILS	
ORIGINAL BY: T.SPELL	DATE: 7-19-11
MODIFIED BY:	DATE: 2/2/16
CHECKED BY:	DATE:
FILE SPEC.: s:\usr\details\stand\shoulderwedgedetail.dgn	

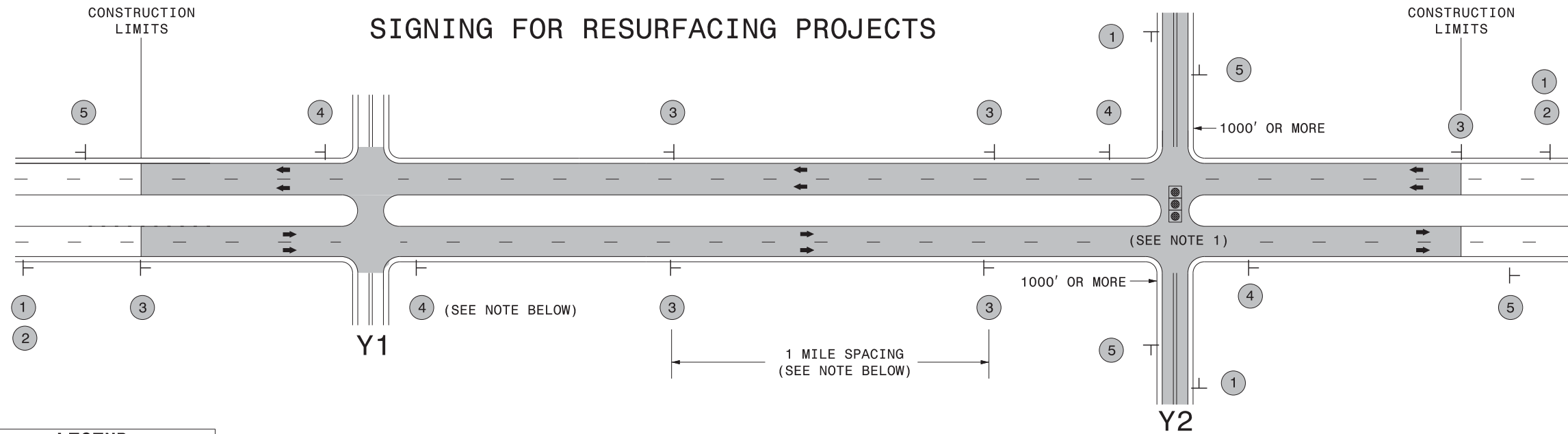
PROJECT NO.	SHEET NO.	TOTAL NO.
2016CPT.14.13.10501.1	4	

SUMMARY OF QUANTITIES

PROJECT NO	COUNTY	MAP NO	ROUTE	DESCRIPTION	TYP	LANES	LANE TYPE	FINAL SURFACE TESTING REQUIRED	WARM MIX ASPHALT REQUIRED	LENGTH MI	WIDTH FT	AGGREGATE SHOULDER BORROW TONS	SHOULDER RECONSTRUCTION SMI	3" MILLING SY	SHOULDER MILLING SY	INCIDENTAL MILLING SY	BASE COURSE, B25.0B TONS	INTER-MEDIATE COURSE, I19.0C TONS	SURFACE COURSE, S9.5C TONS	ASPHALT BINDER FOR PLANT MIX TONS
2016CPT.14.13.10501.1	Jackson	1	US 23/441 SOUTH TO FRANKLIN	FROM .05 MILES WEST OF MACON CO. LINE TO SR-1300 PUMPKIN TOWN RD	1	2	MU	YES	NO	2.2	68	675	4.4	73,250	950	100	350	13,777	8,570	1,182
GRAND TOTAL FOR PROJ NO. 2016CPT.14.13.10501.1										2.2		675	4.4	73,250	950	100	350	13,777	8,570	1,182

THERMOPLASTIC AND PAINT QUANTITIES

PROJECT NO	COUNTY	MAP NO	ROUTE	DESCRIPTION	TYP	LANES	LANE TYPE	LENGTH	WIDTH	4413000000-E	4457000000-N	4695000000-E	4710000000-E	4721000000-E	4725000000-E		4810000000-E		4890000000-E		4905000000-N
										WORK ZONE ADVANCE/GENERAL WARNING SIGNING SF	TEMPORARY TRAFFIC CONTROL LS	8" X 90 M WHITE THERMO LF	24" X 120 M WHITE THERMO LF	THERMO MSG SCHOOL 120 M EA	THERMO LT ARROW 90 M EA	THERMO RT ARROW 90 M EA	4" YELLOW PAINT LF	4" WHITE PAINT LF	4" X 50 M WHITE THERMO LF	4" X 50 M YELLOW THERMO LF	SNOW PLOWABLE MARKERS EA
2016CPT.14.13.10501.1	Jackson	1	US 23/441 SOUTH TO FRANKLIN	FROM .05 MILES WEST OF MACON CO. LINE TO SR-1300 PUMPKIN TOWN RD	1	2	MU	2.2	68	246	*	120	200	12	66	3	26,112	26,112	26,112	26,112	620
GRAND TOTAL FOR PROJ NO. 2016CPT.14.13.10501.1								2.2		246	1	120	200	12	66	3	26,112	26,112	26,112	26,112	620
															69		52,224		52,224		

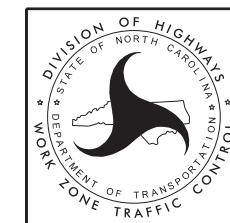


LEGEND	
┆	STATIONARY SIGN
←	DIRECTION OF TRAFFIC FLOW

MAINLINE (-L-) SIGNING

-Y- LINE SIGNING

SIGNING NOTES AND PLACEMENT PER DIRECTION	MAINLINE (-L-) SIGNING		-Y- LINE SIGNING	
	1	 W20-1 48" X 48"	PLACE 1000' PRIOR TO BEGINNING OF CONSTRUCTION LIMITS. ONLY USED ON -Y- LINES IF RESURFACING LIMITS EXTEND 1000' ALONG -Y- LINE.	<p>NO REQUIRED STATIONARY SIGNING FOR THE FOLLOWING -Y- LINE CONDITIONS:</p> <ol style="list-style-type: none"> 1) LESS THAN 1000' OF RESURFACING ALONG -Y- LINE 2) SUBDIVISION ROADS 3) DEAD END ROADS <p>WHEN PAVING/CONSTRUCTION ACTIVITIES PROCEED ACROSS AN UNSIGNED -Y- LINE, ADVANCE WARNING PORTABLE SIGNS SHALL BE USED ALONG THE -Y- LINE AS SHOWN BELOW. REMOVE UPON COMPLETION OF WORK.</p> <div style="display: flex; justify-content: space-around;"> <div style="text-align: center;"> W20-1 48" X 48" </div> <div style="text-align: center;"> W20-7 A 48" X 48" </div> </div> <p>PLACED 500' IN ADVANCE OF FLAGGER. PLACED 250' IN ADVANCE OF FLAGGER.</p>
	2	 W7-3aP 24" X 18"	#2 SIGN ONLY USED WHEN RESURFACING LIMITS ARE 2 OR MORE MILES IN LENGTH. ROUND UP TO NEXT WHOLE NUMBER. (NO FRACTIONAL OR DECIMAL NUMBERS)	
	3	 SP 13107 48" X 48"	PLACE INITIALLY AT THE CONSTRUCTION LIMITS AND SPACED 1 MILE APART THEREAFTER. IF NO -Y- LINES EXIST, PLACE 2ND SET 1/2 MILE FROM THE CONSTRUCTION LIMITS AND THEN SPACE 1 MILE THEREAFTER.	
4	 SP 13106 48" X 48"	THESE ARE FOR -Y- LINES THAT ARE "THROUGH" ROADWAYS. DEAD END AND SUBDIVISION ROADS ARE NOT "THROUGH" ROADWAYS. INSTALL 500' +/- FROM EACH -Y- LINE APPROACH AS SHOWN ABOVE. FOR MULTIPLE -Y- LINES THAT ARE SEPARATED BY 0.25 MILES OR LESS, TREAT AS A SINGLE UNIT AND INSTALL WITHIN 500' OF EACH APPROACH. A MAXIMUM OF 2 SIGN SETS PER MILE. DO NOT INSTALL WHEN -Y- LINES ARE WITHIN 0.5 MILES FROM "END ROAD WORK" SIGN.		
5	 G20-2 A 48" X 24"	PLACE 500' FOLLOWING THE END OF CONSTRUCTION LIMITS.	<p>NOTES:</p> <ol style="list-style-type: none"> 1) MAY USE LAW ENFORCEMENT TO CONTROL TRAFFIC AT SIGNALIZED INTERSECTIONS AS DIRECTED BY THE ENGINEER. PROVIDE PORTABLE "ROAD WORK AHEAD" (W20-1) SIGNS 500' IN ADVANCE ALONG BOTH APPROACHES FROM THE SIDE STREETS WHEN PAVING PROCEEDS THROUGH THE INTERSECTION. 	



**RESURFACING
 ADVANCE WARNING SIGNS
 FOR RURAL AND SUBURBAN
 MULTI-LANE ROADWAYS
 W/ SHOULDER SECTIONS**