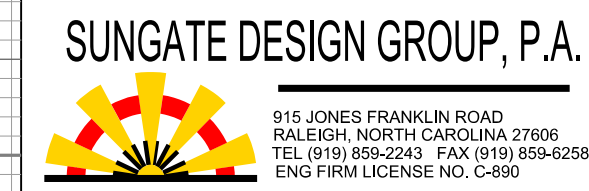


5/14/99



Stantec Consulting Services Inc.
201 Jones Franklin Road
Suite 300
Raleigh, NC 27606
Tel. (919) 851-6866 Fax. (919) 851-7024
www.stantec.com
License No. F-0672



915 JONES FRANKLIN ROAD
RALEIGH, NORTH CAROLINA 27606
TEL. (919) 858-2248 FAX. (919) 858-6258
ENG. FIRM LICENSE NO. C4390

PROJECT REFERENCE NO. B-5157	SHEET NO. 5
ROADWAY DESIGN ENGINEER Designed by Stephen T. Smallwood 022037 1/15/2016	HYDRAULICS ENGINEER Designed by Joshua G. Dalton 26971 1/15/2016

SEAL NOT VALID UNLESS SIGNED AND DATED

-L-

----- LEFT DITCH GRADE
----- RIGHT DITCH GRADE

B.M. *50 ELEV. = 446.10'
N 948438 E 2081232
-L- STA. 17+05 29' RT.
RRS IN 30° GUM

PI = 16+75.00
EL = 445.30'
VC = 500'
K = 37
DS = 30 MPH

CLASS II RIP RAP
1.5:1 NORMAL
EXISTING BRIDGE
TO BE REMOVED

BRIDGE HYDRAULIC DATA		
DESIGN DISCHARGE	= 2000	CFS
DESIGN FREQUENCY	= 25	YRS
DESIGN HW ELEVATION	= 445.4	FT
BASE DISCHARGE	= 2800	CFS
BASE FREQUENCY	= 100	YRS
BASE HW ELEVATION	= 446.51	FT
OVERTOPPING DISCHARGE	= 3700+	CFS
OVERTOPPING FREQUENCY	= 500+	YRS
OVERTOPPING ELEVATION	= 453.5	FT
DATE OF SURVEY = 9/16/2014		
W.S. ELEVATION AT DATE OF SURVEY = 435.9 FT		

FOR -L- PLAN SEE SHEET 4

SEE SHEETS S-1 THRU S-15
FOR STRUCTURE PLANS

I:\A2016\14206\14206.dwg
1/14/2016 10:51:57 AM
S:\Projects\14206\14206.dwg
S:\Projects\14206\14206.dwg

