

**This electronic collection of documents is provided
for the convenience of the user
and is Not a Certified Document –**

**The documents contained herein were originally issued
and sealed by the individuals whose names and license
numbers appear on each page, on the dates appearing
with their signature on that page.**

**This file or an individual page
shall not be considered a certified document.**

TIP PROJECT: U-2707

CONTRACT:

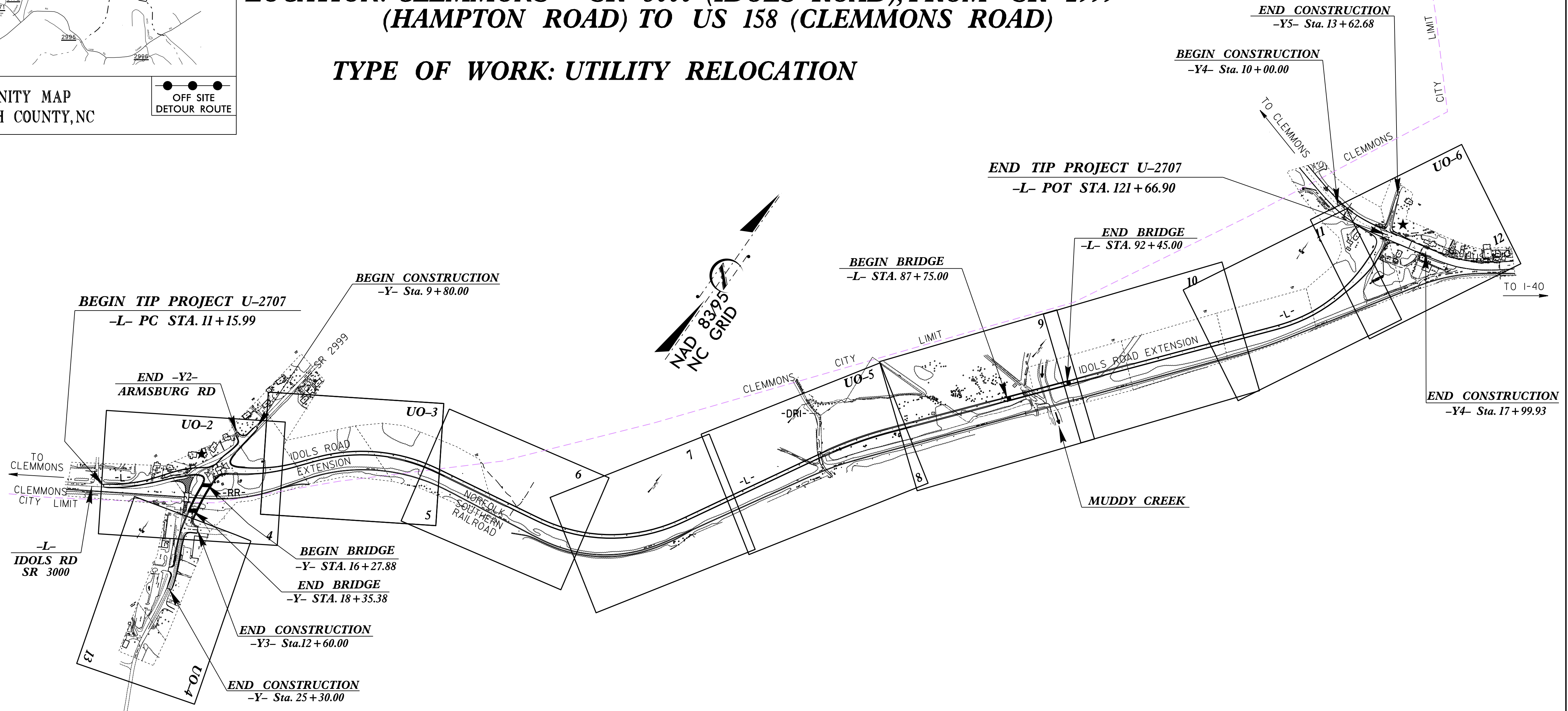
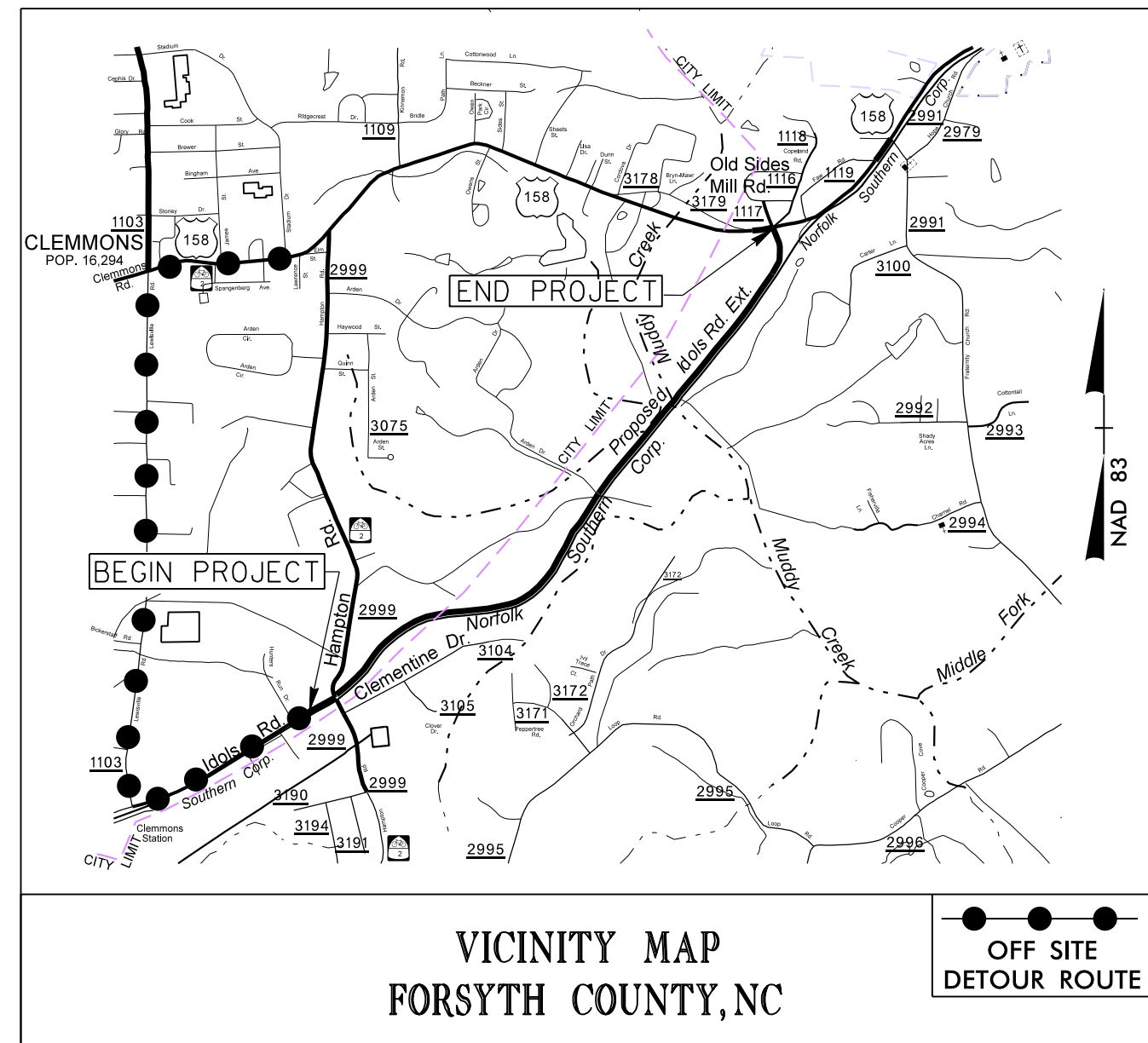
T.I.P. NO.	SHEET NO.
U-2707	UO-1

STATE OF NORTH CAROLINA
DIVISION OF HIGHWAYS

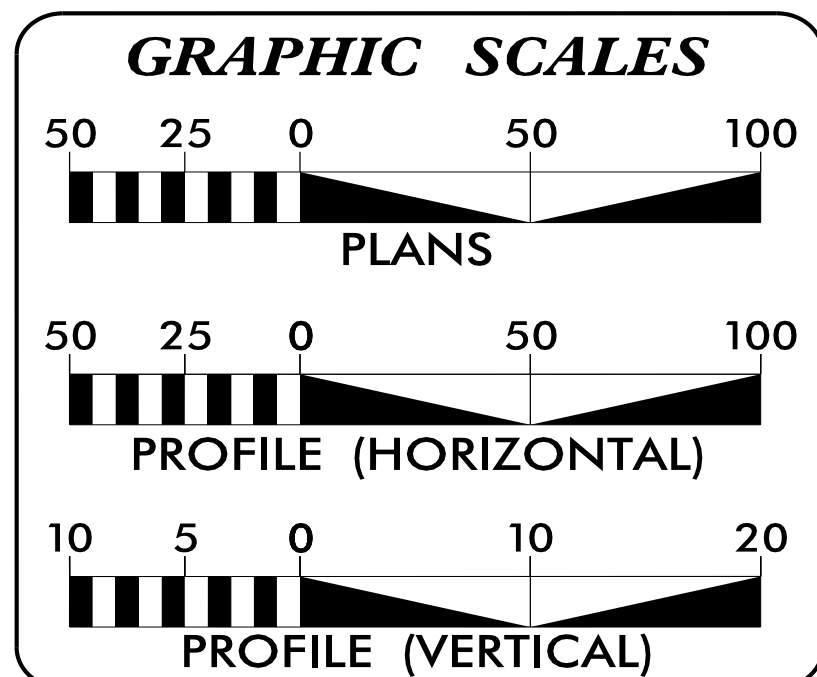
**UTILITIES BY OTHERS PLANS
FORSYTH COUNTY**

LOCATION: CLEMMONS - SR 3000 (IDOLS ROAD), FROM SR 2999 (HAMPTON ROAD) TO US 158 (CLEMMONS ROAD)

TYPE OF WORK: UTILITY RELOCATION



★ PROPOSED TRAFFIC SIGNAL




INDEX OF SHEETS

SHEET NO.	DESCRIPTION
UO-1	TITLE SHEET
UO-2 THRU UO-6	UTILITY BY OTHERS PLAN SHEETS

UTILITY OWNERS ON PROJECT

(A) DUKE ENERGY - POWER
(B) AT&T - TELEPHONE
(C) TIME WARNER CABLE - CATV



PREPARED IN THE OFFICE OF:
**DIVISION OF HIGHWAYS
UTILITIES UNIT
UTILITIES ENGINEERING**

1555 MAIL SERVICES CENTER
RALEIGH, NC 27699-1555
PHONE (919) 707-6690
FAX (919) 250-4151

Roger Worthington, P.E. UTILITIES SECTION ENGINEER
Steve McKee, P.E. UTILITIES SQUAD LEADER PROJECT ENGINEER
Donald Proper UTILITIES PROJECT DESIGN ENGINEER

UTILITIES BY OTHERS

NOTE:
ALL PROPOSED UTILITY WORK SHOWN ON THIS SHEET WILL BE DONE BY OTHERS. NO PAYMENT WILL BE MADE TO THE CONTRACTOR FOR PROPOSED UTILITY WORK SHOWN ON THIS SHEET.

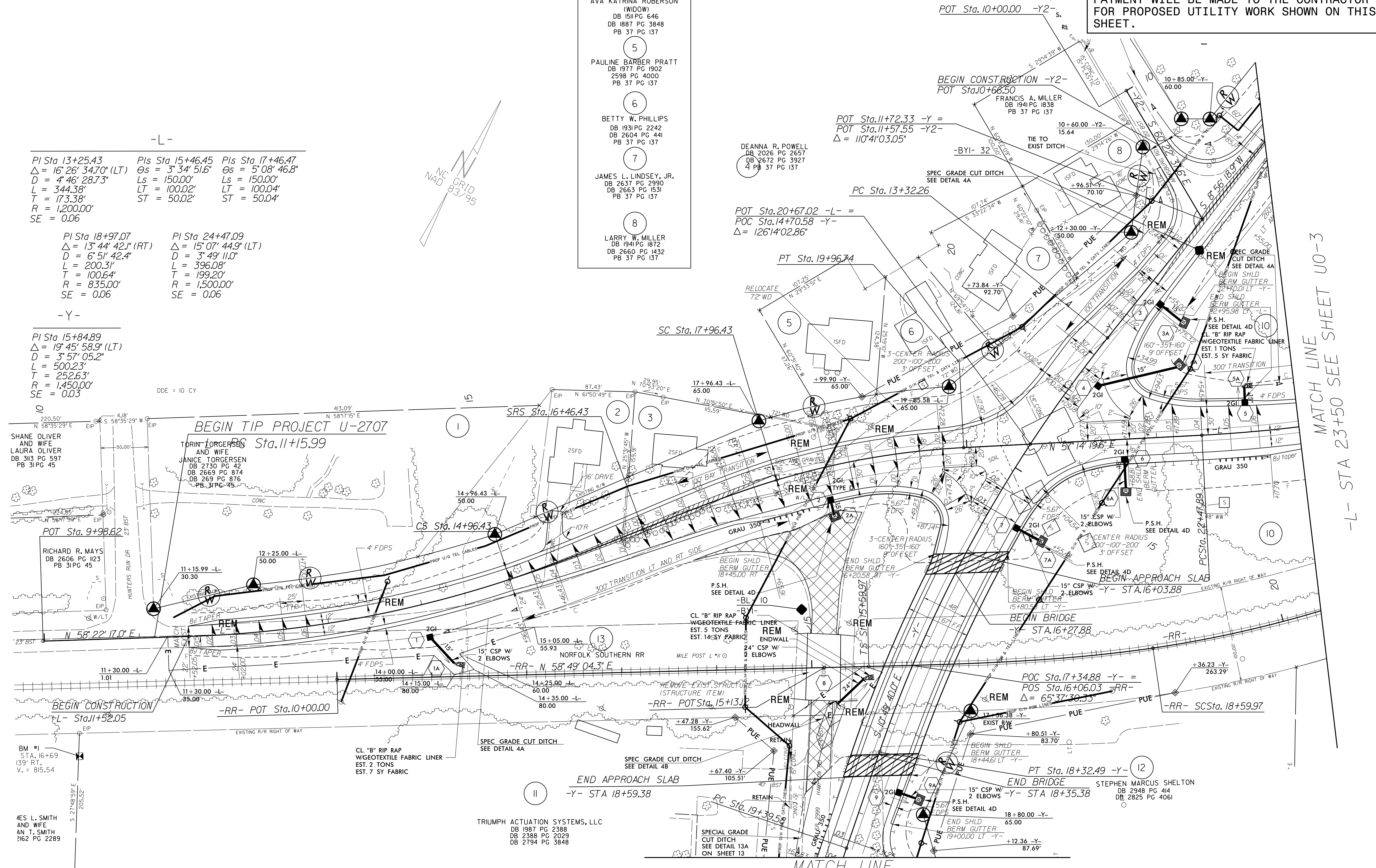
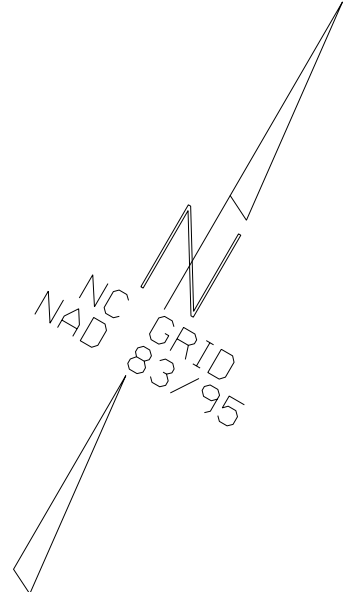
-L-

PI Sta 13+25.43 Δ = 16° 26' 34.70" (LT) D = 4' 46" 28.73" L = 344.38' T = 173.38' R = 1,200.00' SE = 0.06	PIs Sta 15+46.45 Δs = 3° 34' 51.6" Ls = 150.00' LT = 100.02' ST = 50.02'	PIs Sta 17+46.47 Δs = 5° 08' 46.8" Ls = 150.00' LT = 100.04' ST = 50.04'
PI Sta 18+97.07 Δ = 13° 44' 42.1" (RT) D = 6' 51" 42.4" L = 200.31' T = 100.64' R = 835.00' SE = 0.06	PI Sta 24+47.09 Δ = 15° 07' 44.9" (LT) D = 3' 49" 11.0" L = 396.08' T = 199.20' R = 1,500.00' SE = 0.06	

-Y-

PI Sta 15+84.89 Δ = 19° 45' 58.9" (LT) D = 3' 57" 05.2" L = 500.23' T = 252.63' R = 1,450.00' SE = 0.03	
---	--

- 3
AVA KATRINA ROBERSON (WIDOW)
DB 1511 PG 646
DB 1887 PG 3848
PB 37 PG 137
- 5
PAULINE BARBER PRATT
DB 1977 PG 1902
2598 PG 4000
PB 37 PG 137
- 6
BETTY W. PHILLIPS
DB 1931 PG 2242
DB 2604 PG 441
PB 37 PG 137
- 7
JAMES L. LINDSEY, JR.
DB 2637 PG 2990
DB 2663 PG 1531
PB 37 PG 137
- 8
LARRY W. MILLER
DB 1941 PG 1872
DB 2660 PG 1432
PB 37 PG 137



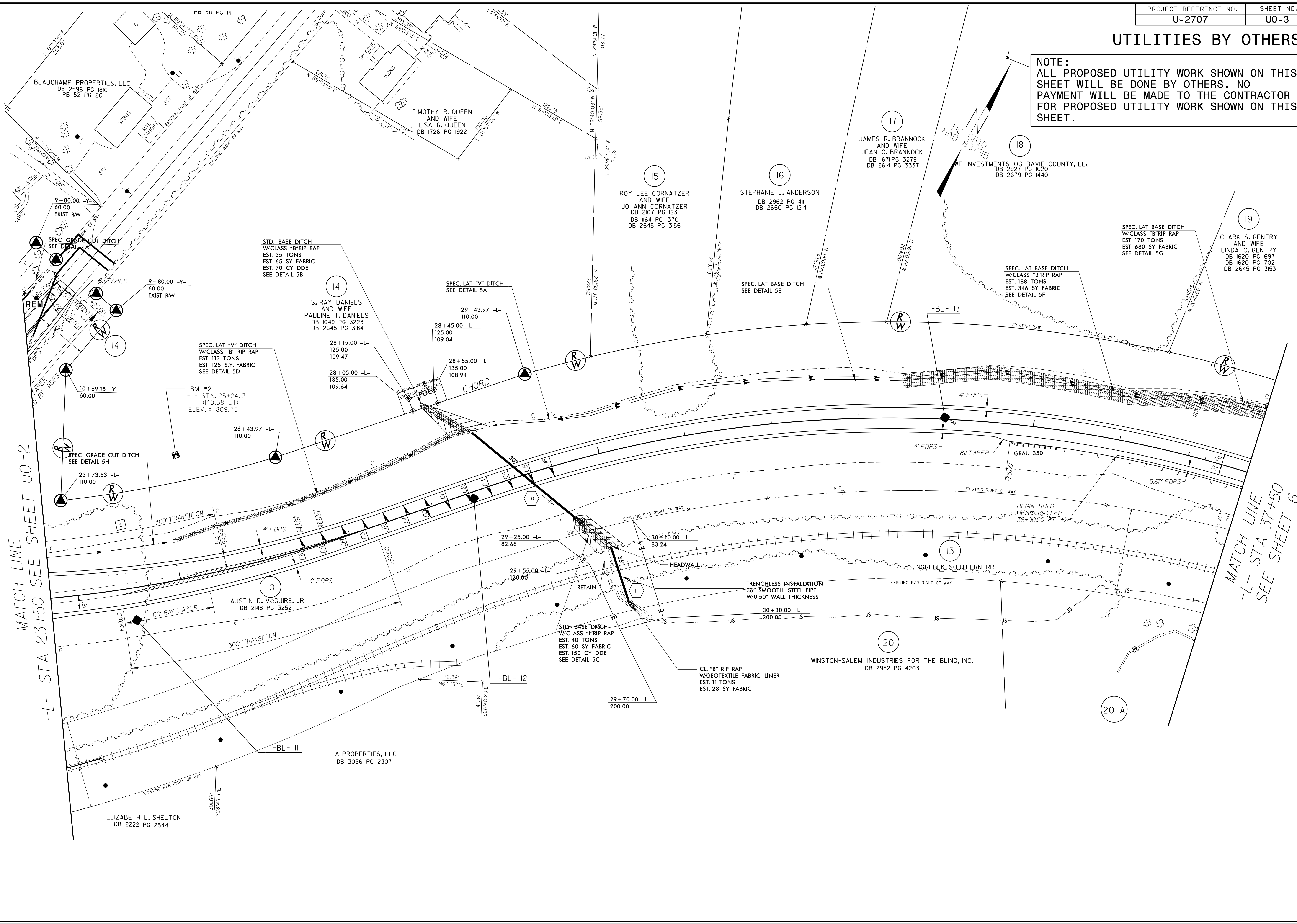
MATCH LINE SEE SHEET UO-3
-L- STA 23+50

MATCH LINE
-Y- STA 19+50 SEE SHEET UO-4

5/14/99
2-DEC-2015 12:13 U:\c\rdy\sh\4\1\0\ut\1 by others (sh\4)\psh.dgn
AES L. SMITH AND WIFE AN T. SMITH 2162 PG 2289

UTILITIES BY OTHERS

NOTE:
 ALL PROPOSED UTILITY WORK SHOWN ON THIS SHEET WILL BE DONE BY OTHERS. NO PAYMENT WILL BE MADE TO THE CONTRACTOR FOR PROPOSED UTILITY WORK SHOWN ON THIS SHEET.



MATCH LINE
-L- STA 23+50 SEE SHEET U0-2

MATCH LINE
-L- STA 37+50
SEE SHEET 6

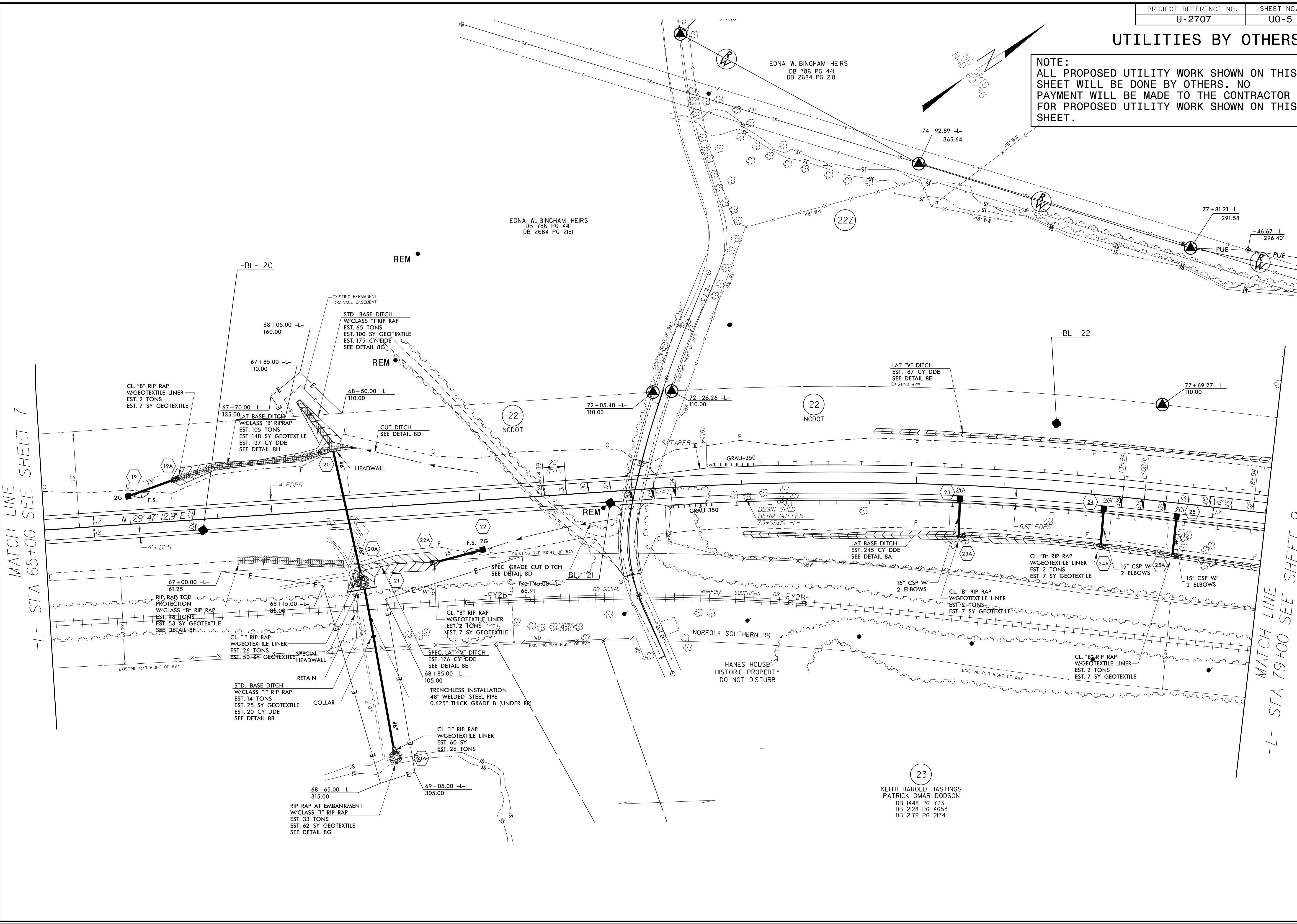
5/14/99
 21-DEC-2015 12:19
 C:\Users\jshelton\OneDrive\Documents\Projects\2707\U0\util by others Sht 3 -L- psh.dgn

UTILITIES BY OTHERS

NOTE:
 ALL PROPOSED UTILITY WORK SHOWN ON THIS SHEET WILL BE DONE BY OTHERS. NO PAYMENT WILL BE MADE TO THE CONTRACTOR FOR PROPOSED UTILITY WORK SHOWN ON THIS SHEET.

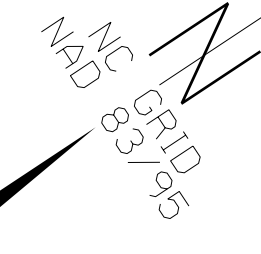
MATCH LINE
-L- STA 65+00 SEE SHEET 7

MATCH LINE
-L- STA 79+00 SEE SHEET 9



EDNA W. BINGHAM HEIRS
 DB 786 PG 441
 DB 2684 PG 2181

EDNA W. BINGHAM HEIRS
 DB 786 PG 441
 DB 2684 PG 2181



23
 KEITH HAROLD HASTINGS
 PATRICK OMAR DODSON
 DB 1448 PG 773
 DB 2128 PG 4653
 DB 2179 PG 2174

MATCH LINE
-L- STA 65+00 SEE SHEET 7

MATCH LINE
-L- STA 79+00 SEE SHEET 9

