

**This electronic collection of documents is provided
for the convenience of the user
and is Not a Certified Document –**

**The documents contained herein were originally issued
and sealed by the individuals whose names and license
numbers appear on each page, on the dates appearing
with their signature on that page.**

**This file or an individual page
shall not be considered a certified document.**

09/08/99

TIP PROJECT: U-2707

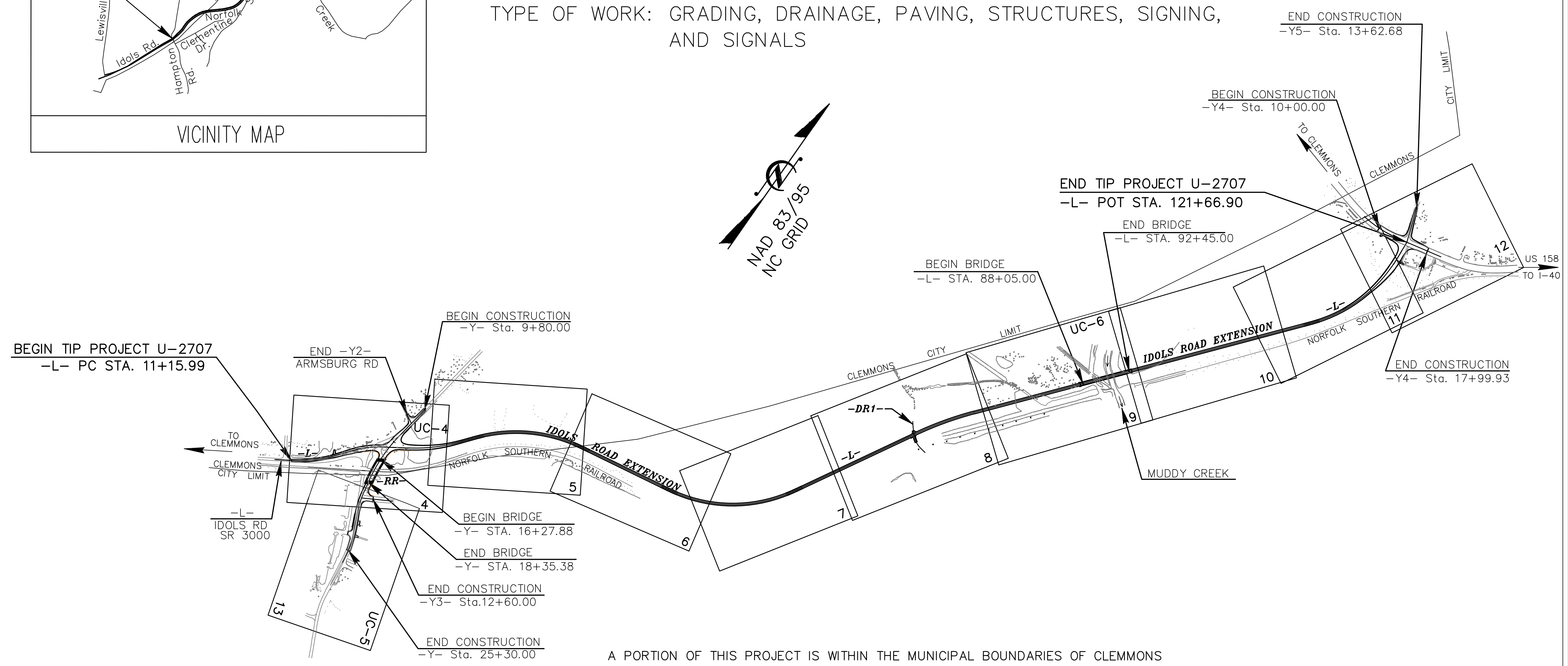
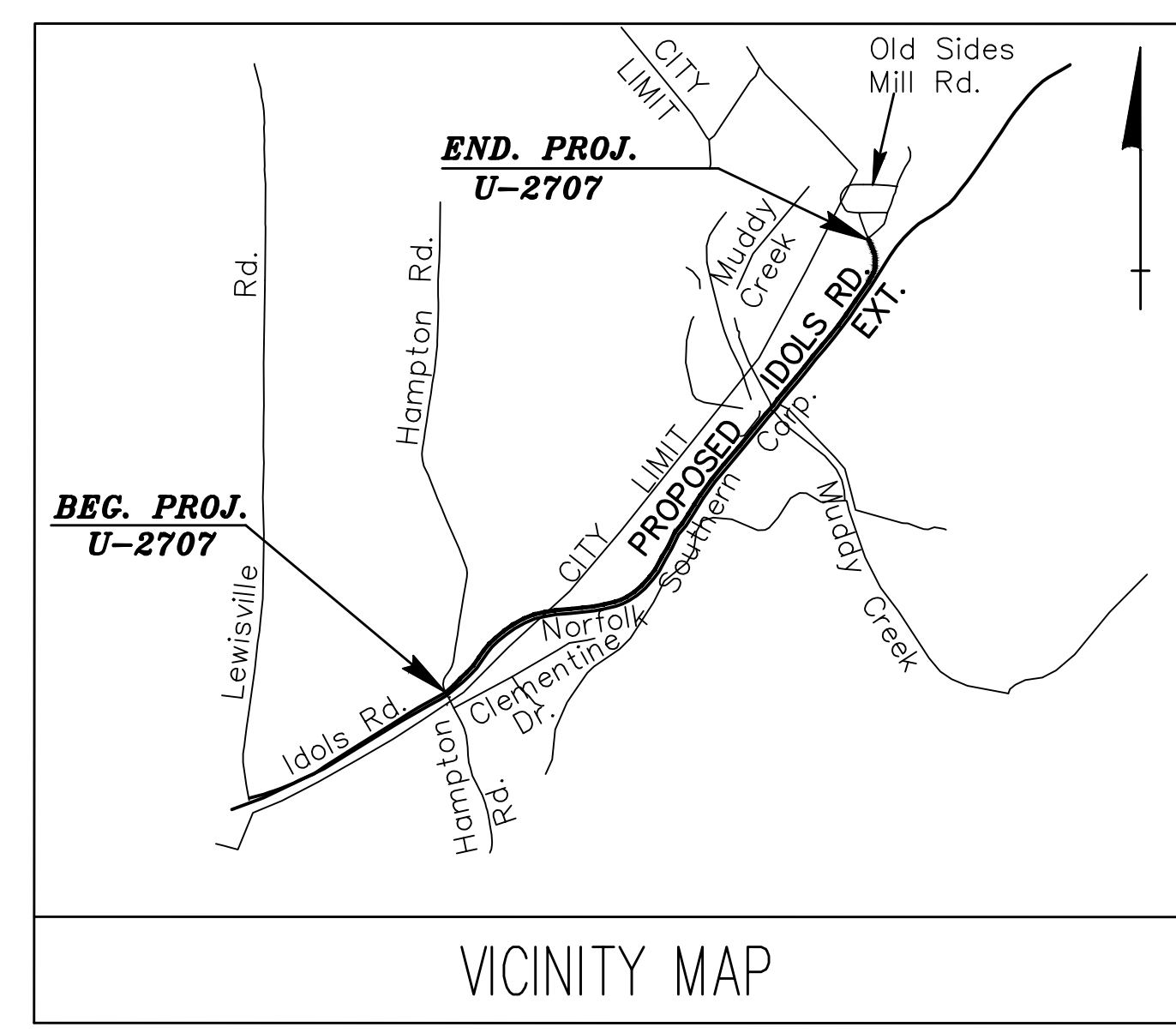
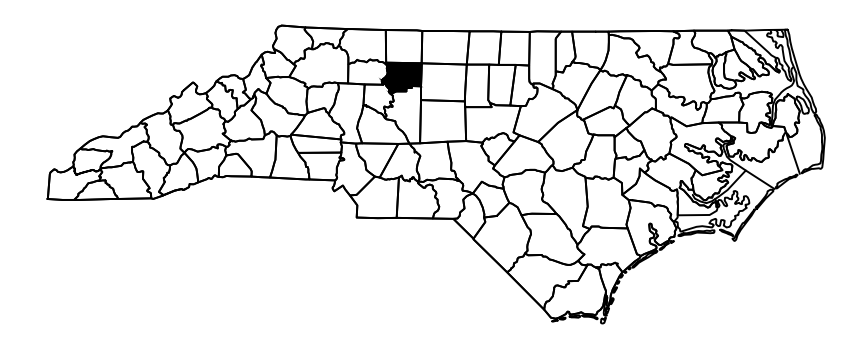
STATE OF NORTH CAROLINA DIVISION OF HIGHWAYS

T.I.P. NO.	SHEET NO.
U-2707	UC-1

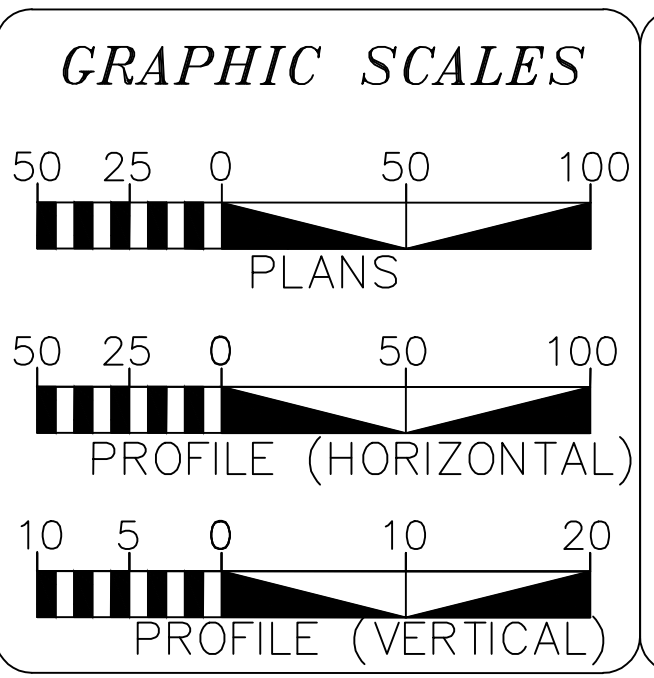
UTILITY CONSTRUCTION PLANS FORSYTH COUNTY

LOCATION: CLEMMONS - SR 3000 (IDOLS ROAD), FROM SR 2999 (HAMPTON ROAD) TO US 158 (CLEMMONS ROAD)

TYPE OF WORK: GRADING, DRAINAGE, PAVING, STRUCTURES, SIGNING, AND SIGNALS



A PORTION OF THIS PROJECT IS WITHIN THE MUNICIPAL BOUNDARIES OF CLEMMONS
CLEARING ON THIS PROJECT SHALL BE PERFORMED TO THE LIMITS ESTABLISHED BY METHOD III

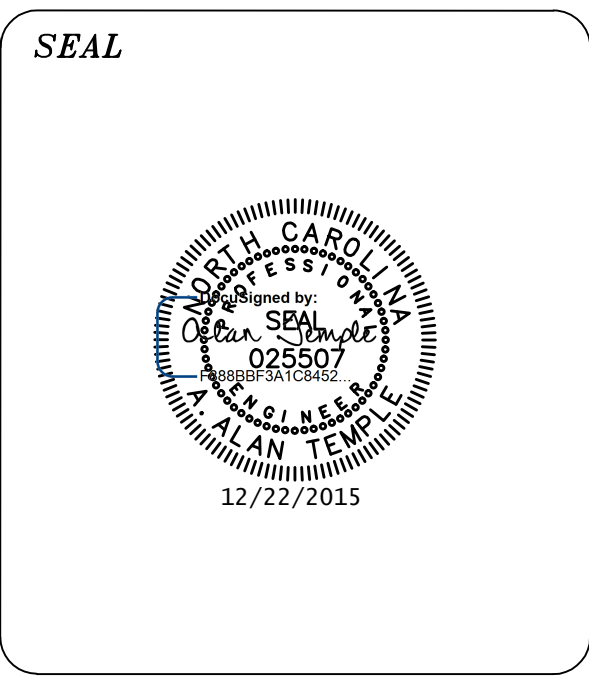


INDEX OF SHEETS

SHEET NO.	DESCRIPTION
UC-1	TITLE SHEET
UC-2	UTILITY SYMBOLOGY
UC-3	NOTES
UC-3A THRU UC-3C	DETAILS
UC-4 THRU UC-6	UTILITY CONSTRUCTION SHEETS
UC-7 THRU UC-8	PROFILE SHEETS

WATER AND SEWER OWNERS ON PROJECT

(1) SEWER:	WINSTON-SALEM/FORSYTH COUNTY UTILITIES COMMISSION
(2) WATER:	WINSTON-SALEM/FORSYTH COUNTY UTILITIES COMMISSION



PREPARED IN THE OFFICE OF:
**ENGINEERING DIVISION
CITY OF WINSTON-SALEM**

P.O. BOX 2511
WINSTON-SALEM, NC 27102
PHONE: (336) 727-8000
FAX: (336) 727-2361

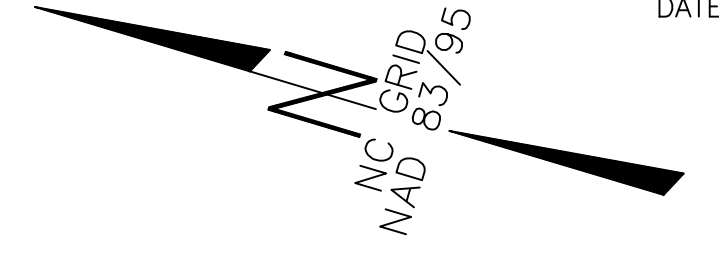
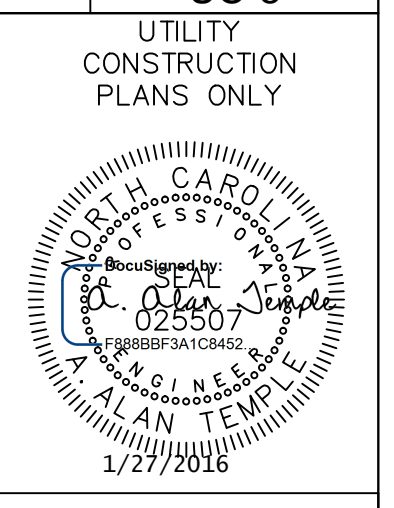
A. ALAN TEMPLE, P.E. PROJECT ENGINEER

09/08/99

8/17/99

PROJECT REFERENCE NO.	SHEET NO.
U-2707	UC-5

CITY OF WINSTON-SALEM
 PERMIT NUMBER
 WATER 2734
 SEWER
 DATE 12/15/15



-Y-
 PI Sta 24+77.65 PI Sta 20+52.02
 = 18° 15' 54.9" (R#) 13° 30' 00.2" (LT)
 D = 6° 01' 52.1" D = 6° 01' 52.1"
 L = 302.85' L = 223.84'
 T = 152.72' T = 112.44'
 R = 950.00' R = 950.00'
 SE = 0.04 SE = 0.04

POT 12+90.56 -Y3-
 END CONSTRUCTION
 POT Sta. 12+60.00
 -Y3-

END CONSTRUCTION
 POC Sta. 25+30.00 -Y-

THOMAS M. DOWD
 MICHAEL DOWD
 DB 1307 PG 214

ATLANTIS FOODS HOLDINGS, LLC
 DB 3098 PG 3605
 DB 2827 PG 2735

DUKE POWER COMPANY
 DB 851 PG 332

WELLINGTON ASSOCIATES, LLC
 DB 2127 PG 3342

MARGARET E. HEATH
 DB 3156 PG 1635
 73-E-111

PT Sta. 21+63.42

PT Sta. 26+27.78

END RESURFACING
 POC Sta. 25+02.69 -Y-

FRISBY ACQUISITION CORPORATION
 DB 1987 PG 2388 PC Sta. 23+24.93

VERNON L. MOORE
 88-E-1763
 DB 1143 PG 915

ROBERT L. THOMPSON
 AND WIFE
 BILLIE THOMPSON
 DB 1108 PG 683
 PB 38 PG 165

NOTE: NEW ENTRANCE MUST BE CONSTRUCTED BEFORE
 OBSTRUCTING THE EXISTING TRUCK ENTRANCE IN ANY
 WAY.

DI RESTRAINED JOINT PIPE
 PC350 OPEN CUT
 STA. 2+10.11 TO
 STA. 6+35.11 WL-1

DI PIPE PC350 OPEN CUT

POT Sta. 10+00.00
 ΔY3-
 = 75°33'54.76"

45° BENDS
 STA. 7+14.28 WL-1
 STA. 7+21.19 WL-1

16" TAPPING VALVE
 16" SLEEVE
 16" PLUG

MATCH LINE -Y- STA 19+50
 SEE SHEET UC-4

REVISIONS

STIMESON

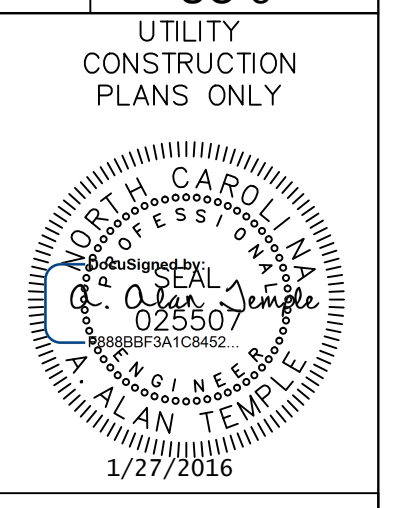
EUNICE E. COPE
 AND HUSBAND
 WALTER L. COPE, JR.
 DB 1858 PG 2099

9347
 16" D.I. WATER MAIN
 RELOCATION - PROJECT 74347
 SEE SHEET UC-7 FOR WATERLINE PROFILE

8/17/99

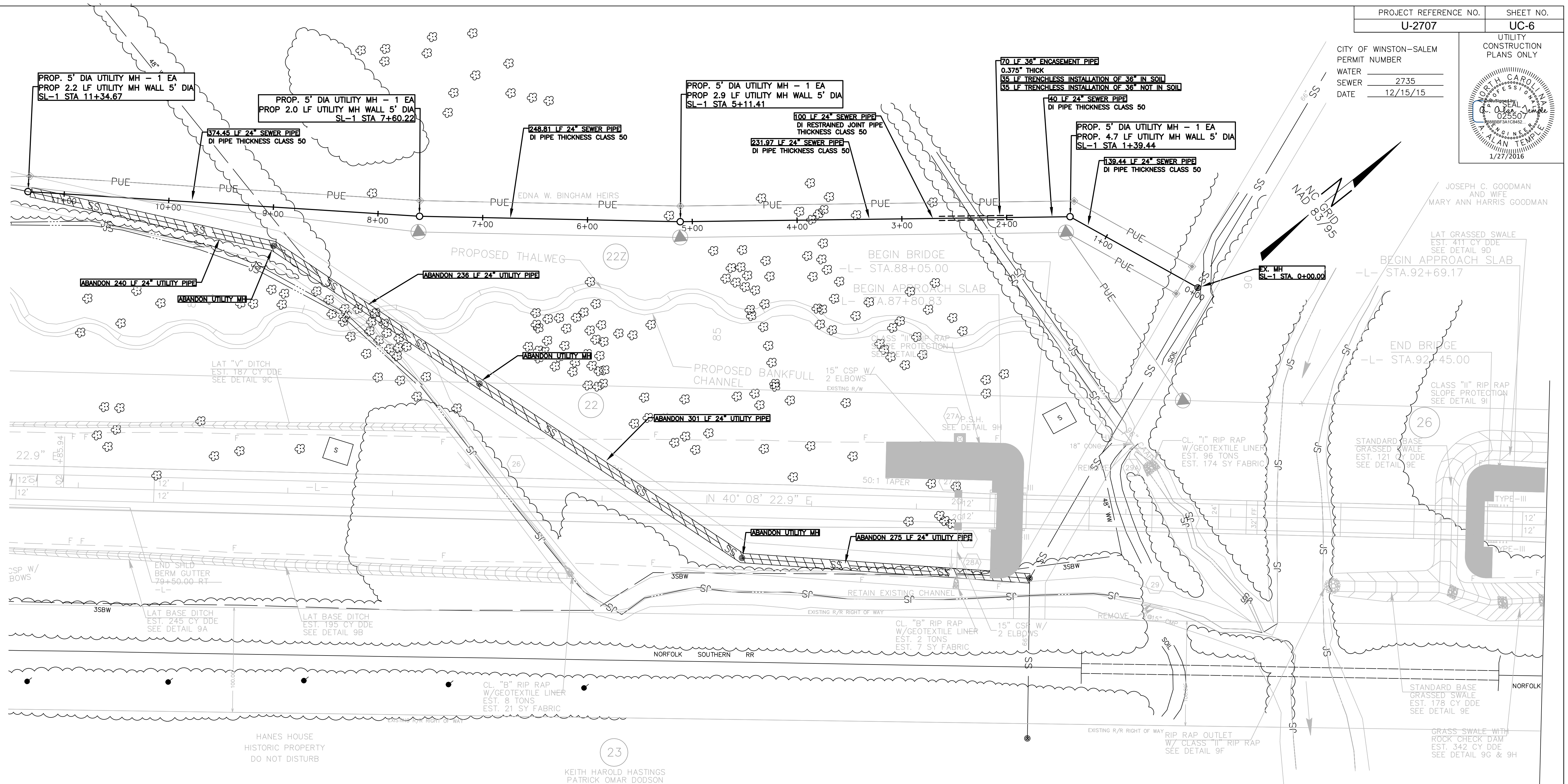
PROJECT REFERENCE NO.	SHEET NO.
U-2707	UC-6

CITY OF WINSTON-SALEM
 PERMIT NUMBER
 WATER _____
 SEWER 2735
 DATE 12/15/15



JOSEPH C. GOODMAN
 AND WIFE
 MARY ANN HARRIS GOODMAN

REVISIONS

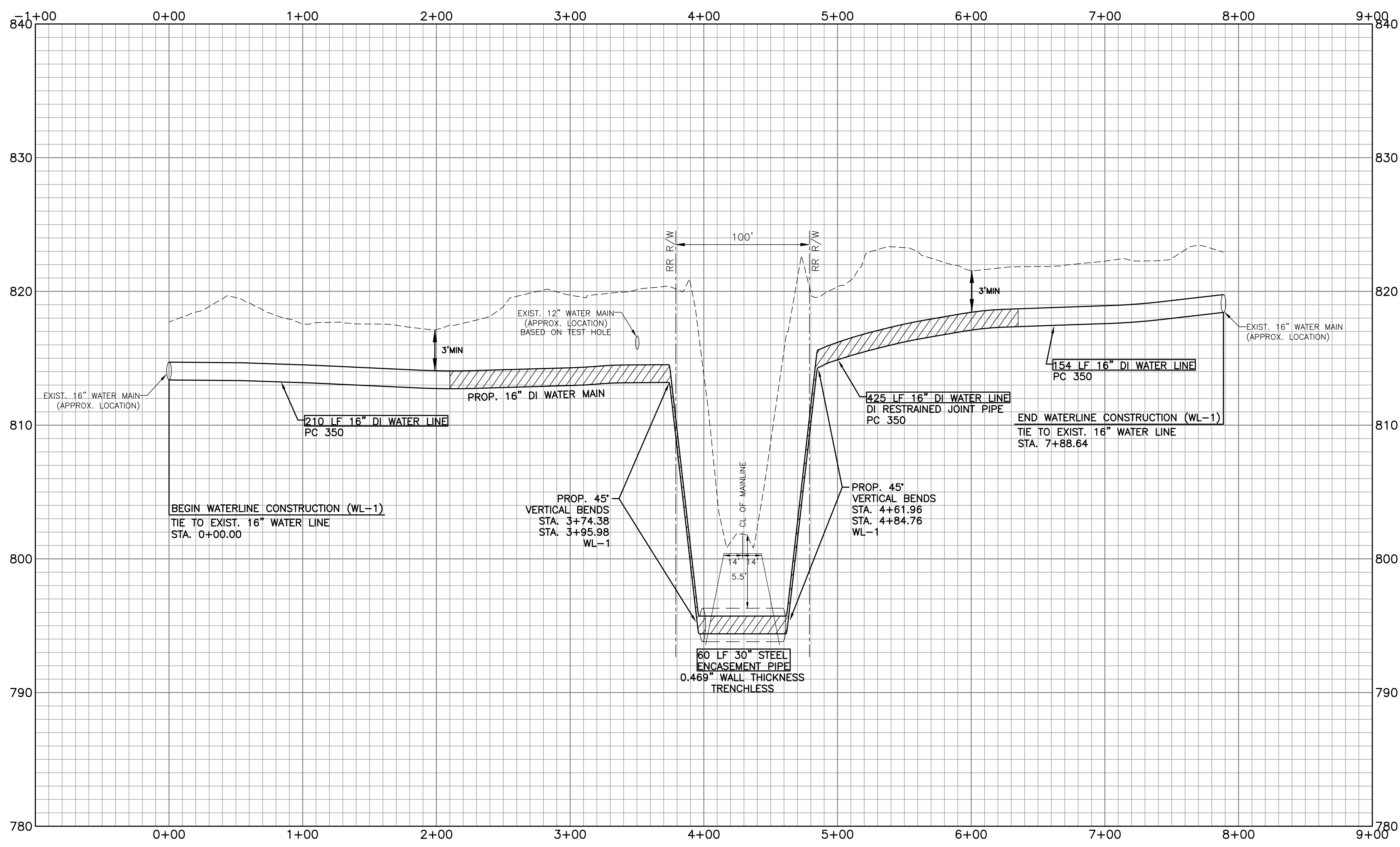
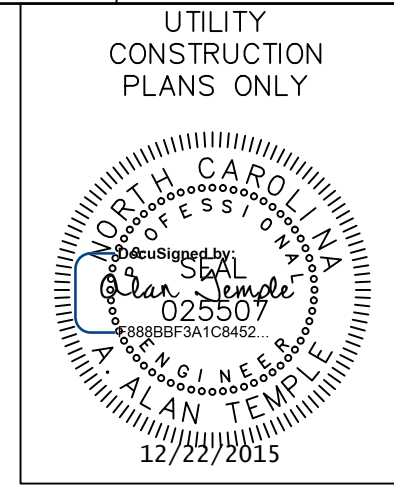


KEITH HAROLD HASTINGS
 PATRICK OMAR DODSON

9348

24" D.I. SEWER MAIN
 RELOCATION - PROJECT 75348

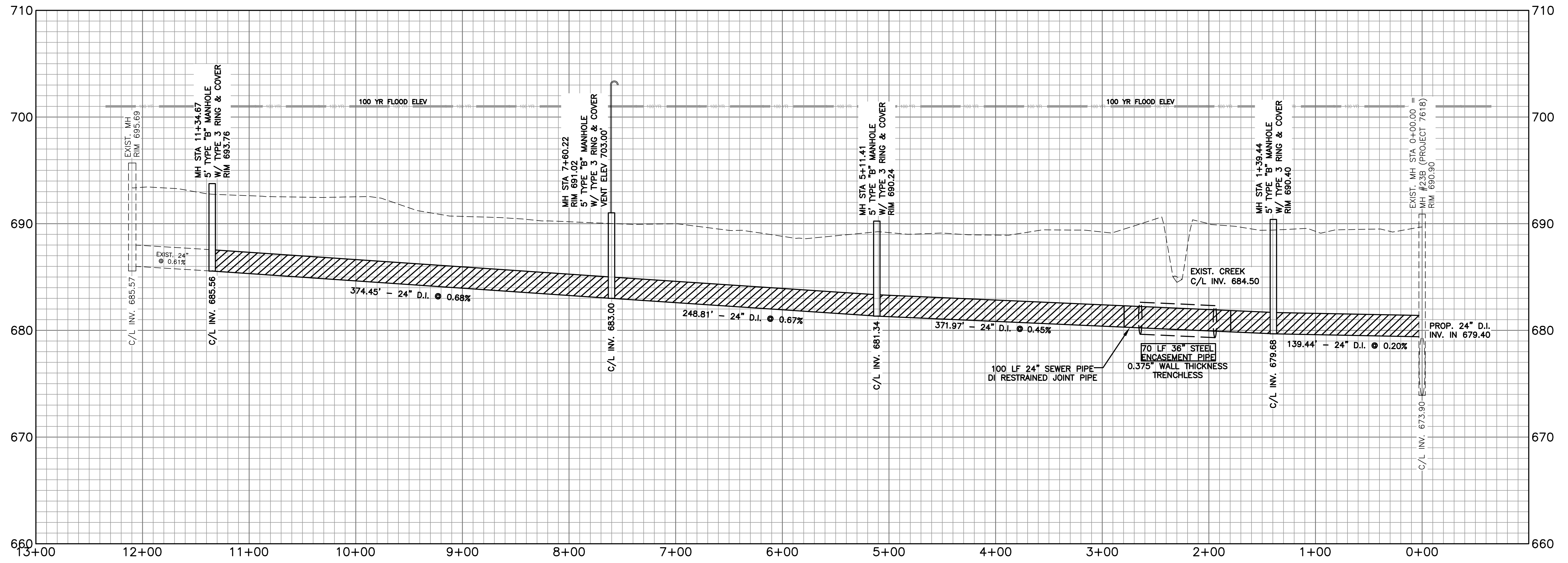
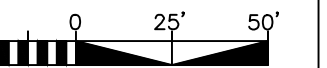
SEE SHEET UC-8 FOR SEWERLINE PROFILE



9347

16" D.I. WATER MAIN
RELOCATION - PROJECT 74347

SEE SHEET UC-4 AND UC-5 FOR WATERLINE PLANS



9348

24" D.I. SEWER MAIN
RELOCATION - PROJECT 75348

SEE SHEET UC-6 FOR SEWERLINE PLAN