

NOTES

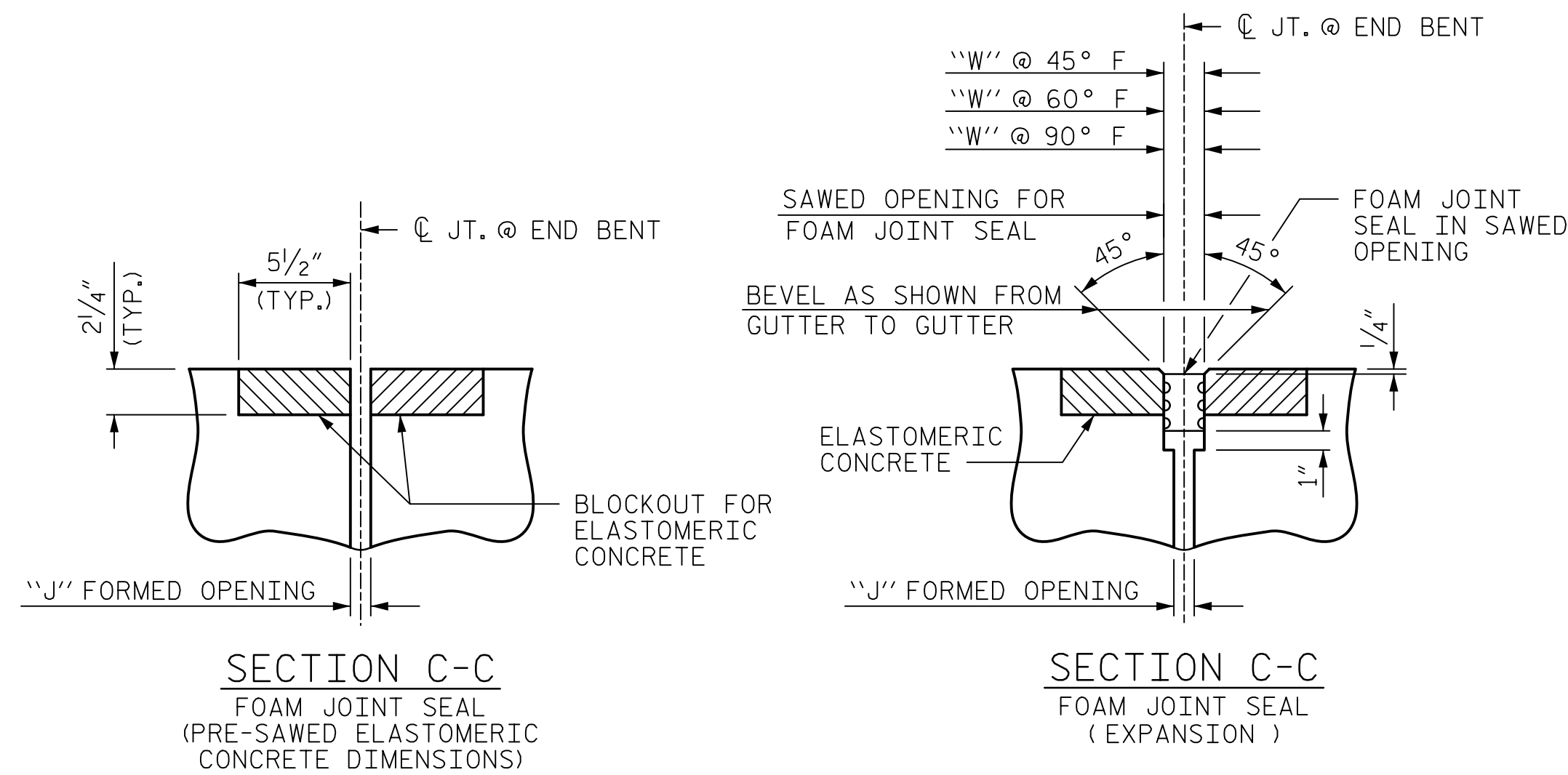
THE STEEL PLATES SHALL CONFORM TO AASHTO M270 GRADE 36 OR APPROVED EQUAL. AFTER FABRICATION, THE PLATES SHALL BE COMMERCIALY BLAST CLEANED AND EITHER COATED WITH A MINIMUM THICKNESS OF 4 MILS (DRY) OF ZINC-RICH PAINT, GALVANIZED OR METALLIZED TO A MINIMUM THICKNESS OF 6 MILS IN ACCORDANCE WITH THE STANDARD SPECIFICATIONS. FOR THERMAL SPRAYED COATINGS (METALLIZATION), SEE SPECIAL PROVISIONS.

THE 3/4" DIAMETER HEX HEAD BOLTS SHALL CONFORM TO ASTM F593 ALLOY 304 STAINLESS STEEL.

NO SEPARATE PAYMENT WILL BE MADE FOR FURNISHING AND INSTALLING THE COVER PLATE. THE ENTIRE COST OF THIS WORK SHALL BE INCLUDED IN THE LUMP SUM PRICE FOR "FOAM JOINT SEALS".

FOR FOAM JOINT SEALS, SEE SPECIAL PROVISIONS.

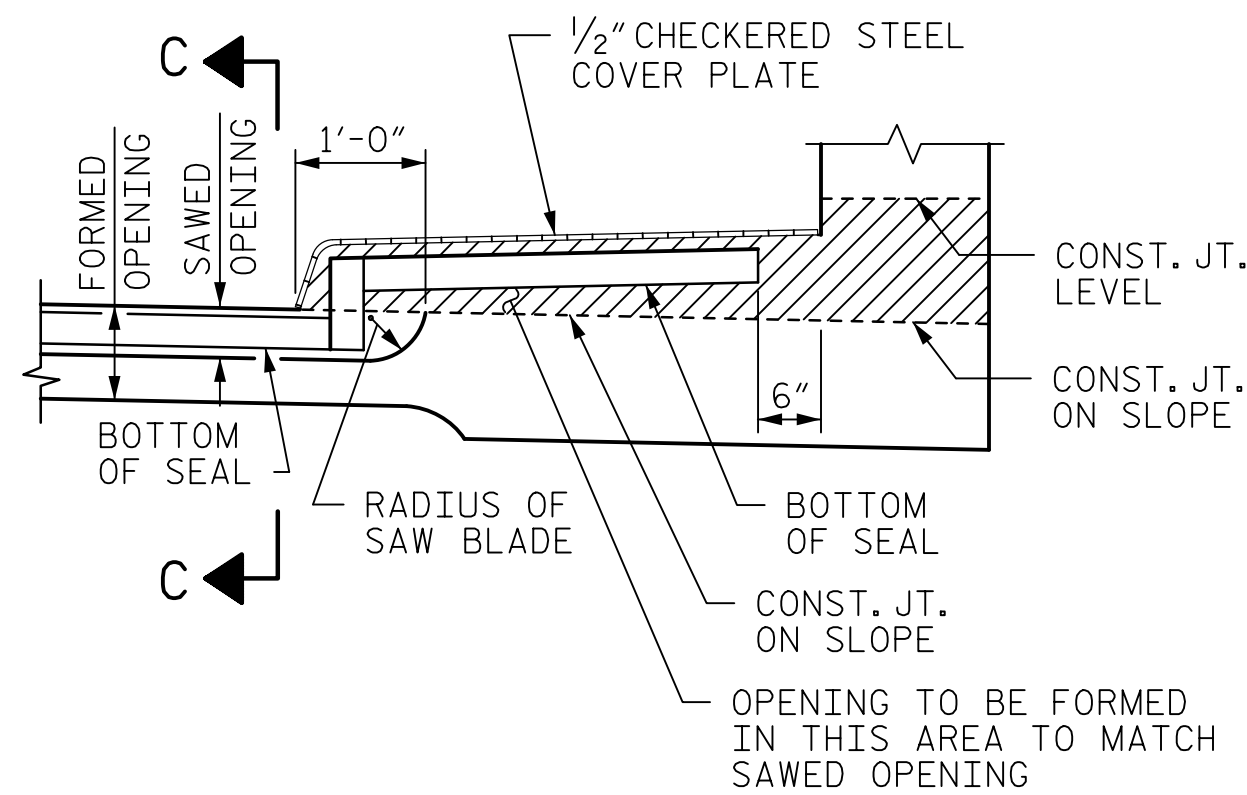
FOR ELASTOMERIC CONCRETE, SEE SPECIAL PROVISIONS.



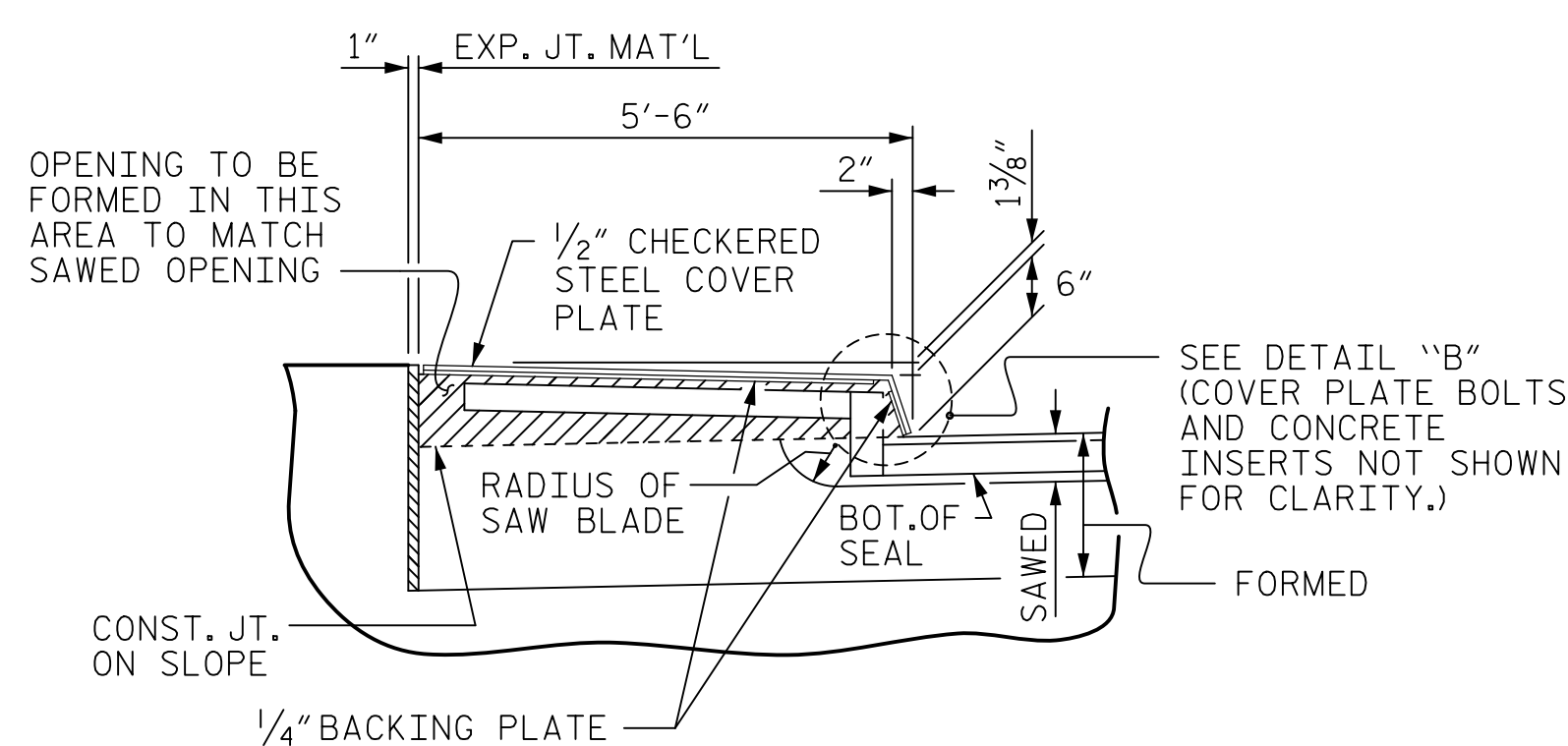
SECTION C-C  
FOAM JOINT SEAL  
(PRE-SAWED ELASTOMERIC  
CONCRETE DIMENSIONS)

SECTION C-C  
FOAM JOINT SEAL  
(EXPANSION)

TYPICAL FOAM JOINT SEAL DETAIL



SECTION A-A



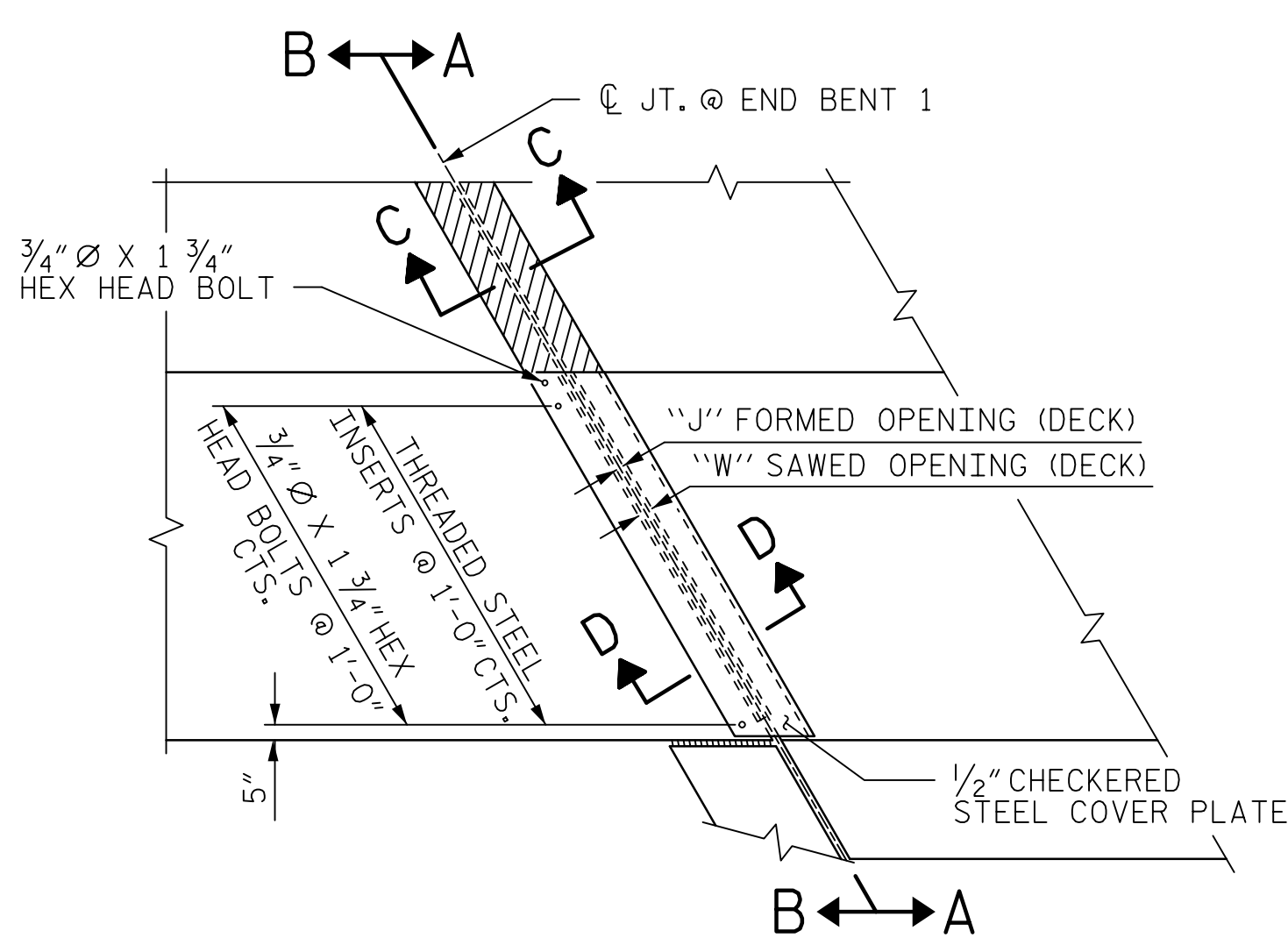
SECTION B-B

MOVEMENT AND SETTING AT FOAM JOINT							
END BENT NO.	SKEW ANGLE (TO TAN.)	NOMINAL UNCOMPRESSED SEAL WIDTH	TOTAL MOVEMENT (ALONG C RDWY)	"J" FORMED OPENING	"W" PERPENDICULAR JOINT OPENING AT 30° F	"W" PERPENDICULAR JOINT OPENING AT 60° F	"W" PERPENDICULAR JOINT OPENING AT 90° F
EB1	61°03'44"	2 1/2"	1 1/8"	1 1/4"	2 1/8"	1 5/16"	1 9/16"
EB2	69°08'51"	2 1/2"	1 1/8"	1 1/4"	2 1/8"	1 5/16"	1 9/16"

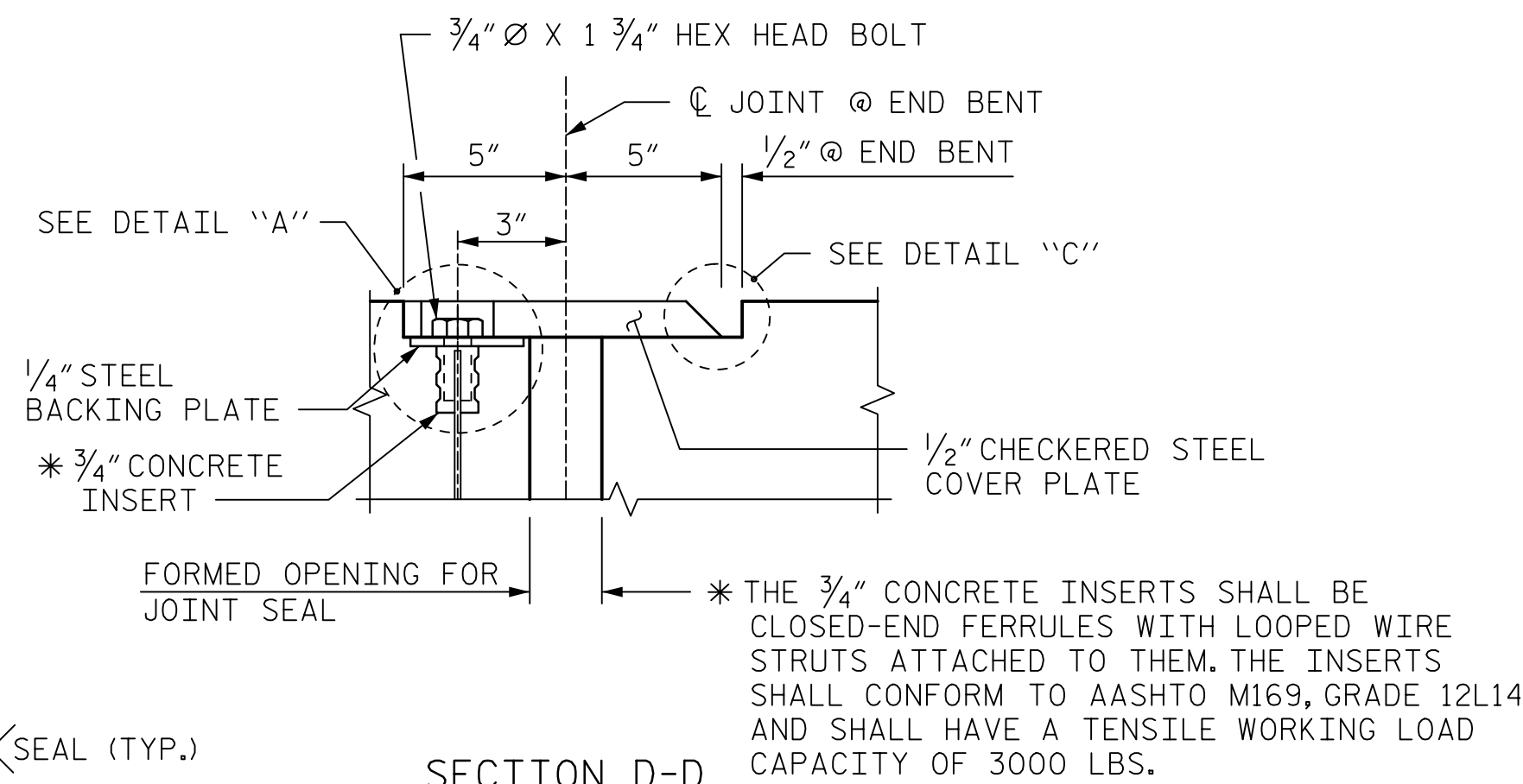
TOTAL MOVEMENT IS CALCULATED ALONG THE CENTERLINE OF ROADWAY. JOINT OPENINGS ARE MEASURED PERPENDICULAR TO THE JOINT.

BILL OF MATERIAL	
END BENT NO.	ELASTOMERIC CONCRETE * (CU. FT.)
1	11.34
2	10.64
TOTAL	21.98

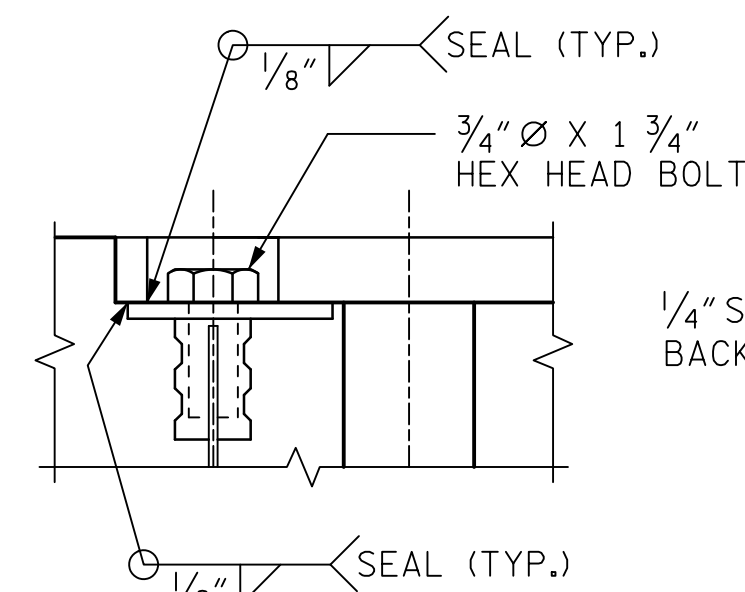
\*BASED ON THE MINIMUM BLOCKOUT SHOWN.



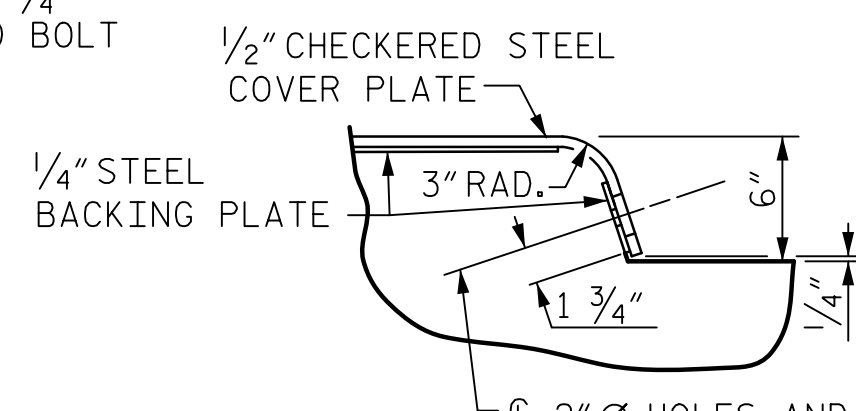
PLAN VIEW OF FOAM JOINT SEAL  
WITH COVER PLATE @ END BENT FOR SIDEWALK



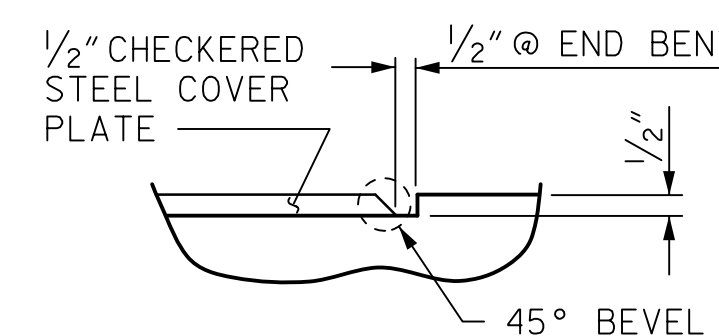
SECTION D-D



DETAIL "A"



DETAIL "B"



DETAIL "C"

JOINT SEAL DETAILS @ END BENT

ASSEMBLED BY :	DDL	DATE :	11/2015
CHECKED BY :	JCM	DATE :	11/2015
DRAWN BY :	FCJ 11/88	REV. 10/11/11	MAA/GM
CHECKED BY :	ARB 11/88	REV. 7/12	MAA/GM
		REV. 6/13	MAA/GM

DOCUMENT NOT CONSIDERED FINAL UNLESS ALL SIGNATURES COMPLETED



PROJECT NO. U-2707  
 FORSYTH COUNTY  
 STATION: 17+34.88 -Y-  
 SHEET 3 OF 3 BRIDGE NO. 109

STATE OF NORTH CAROLINA  
 DEPARTMENT OF TRANSPORTATION  
 RALEIGH  
 STANDARD  
 BRIDGE APPROACH  
 SLAB DETAILS

REVISIONS						SHEET NO.
NO.	BY:	DATE:	NO.	BY:	DATE:	S-86
1			3			TOTAL SHEETS
2			4			86