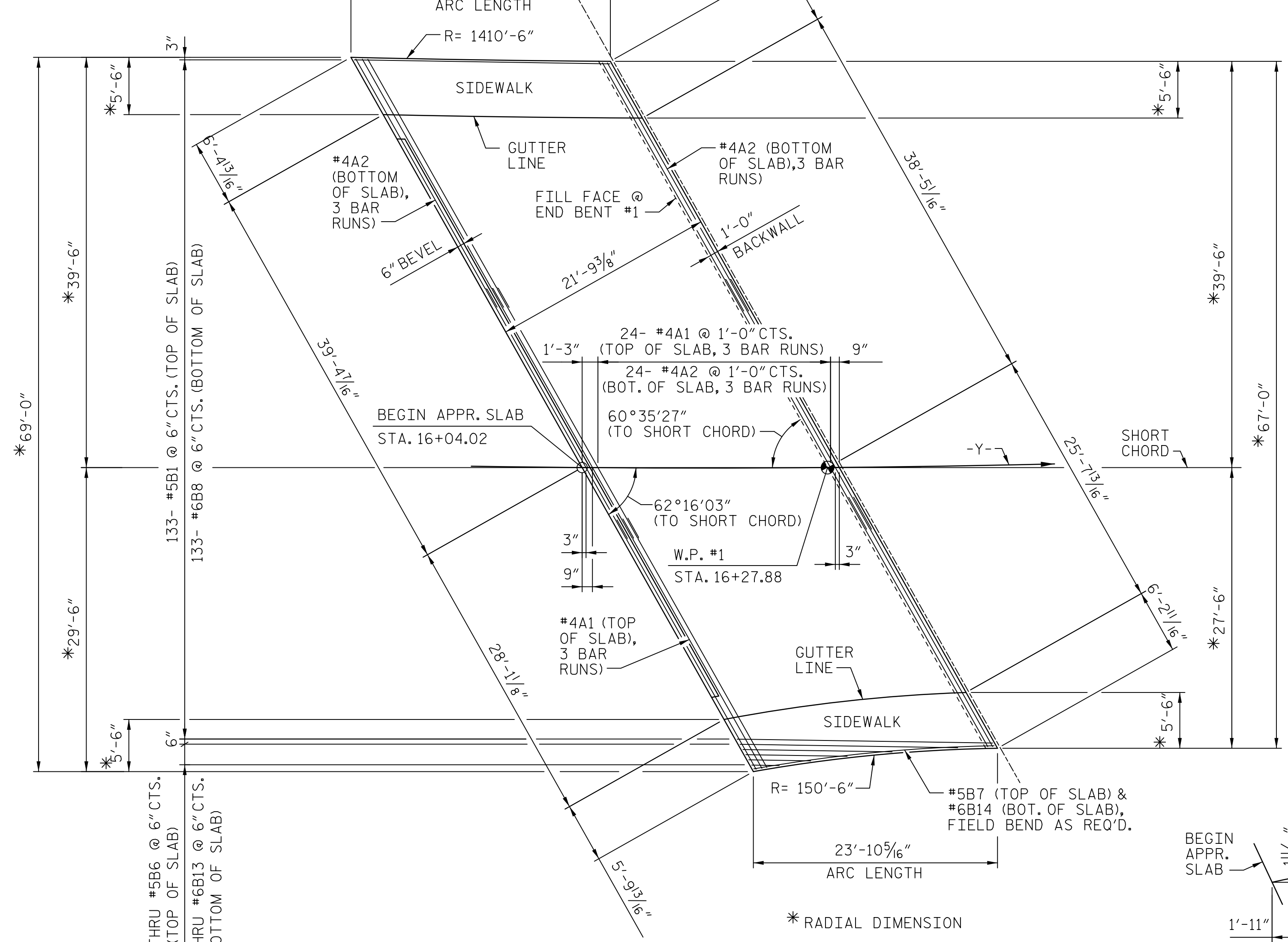


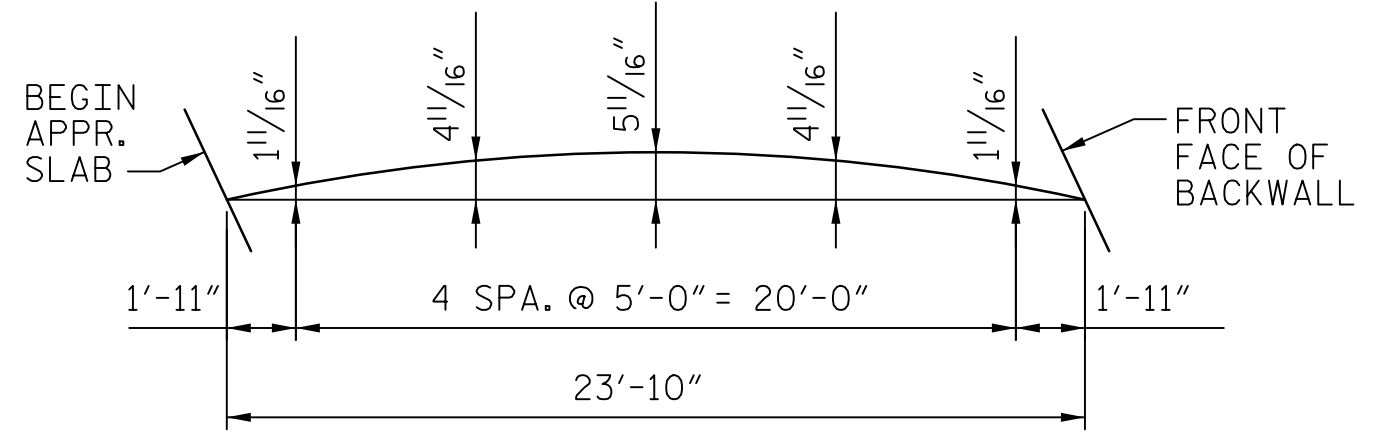
DATE: 1/12/2016
TIME: 8:55:59 AM

USER: A:\s\c\p\p\109\c\c\402\d05_112707_S1U_S95_A502.dgn
DGN: A:\s\c\p\p\109\c\c\402\d05_112707_S1U_S95_A502.dgn

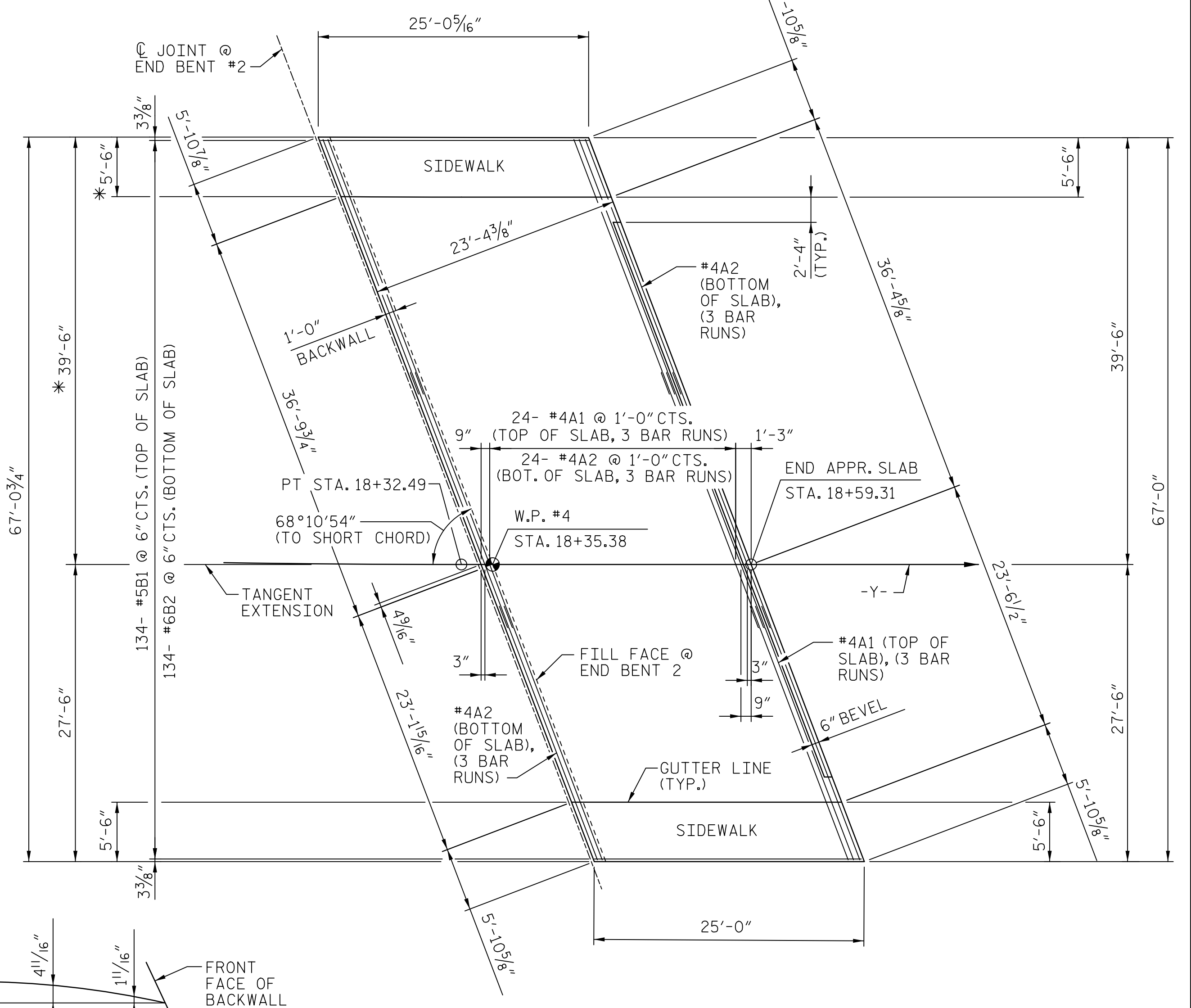
SHORT CHORD IS THE LINE BETWEEN BEGIN BRIDGE APPR. SLAB AND W.P. #1 @ END BENT #1



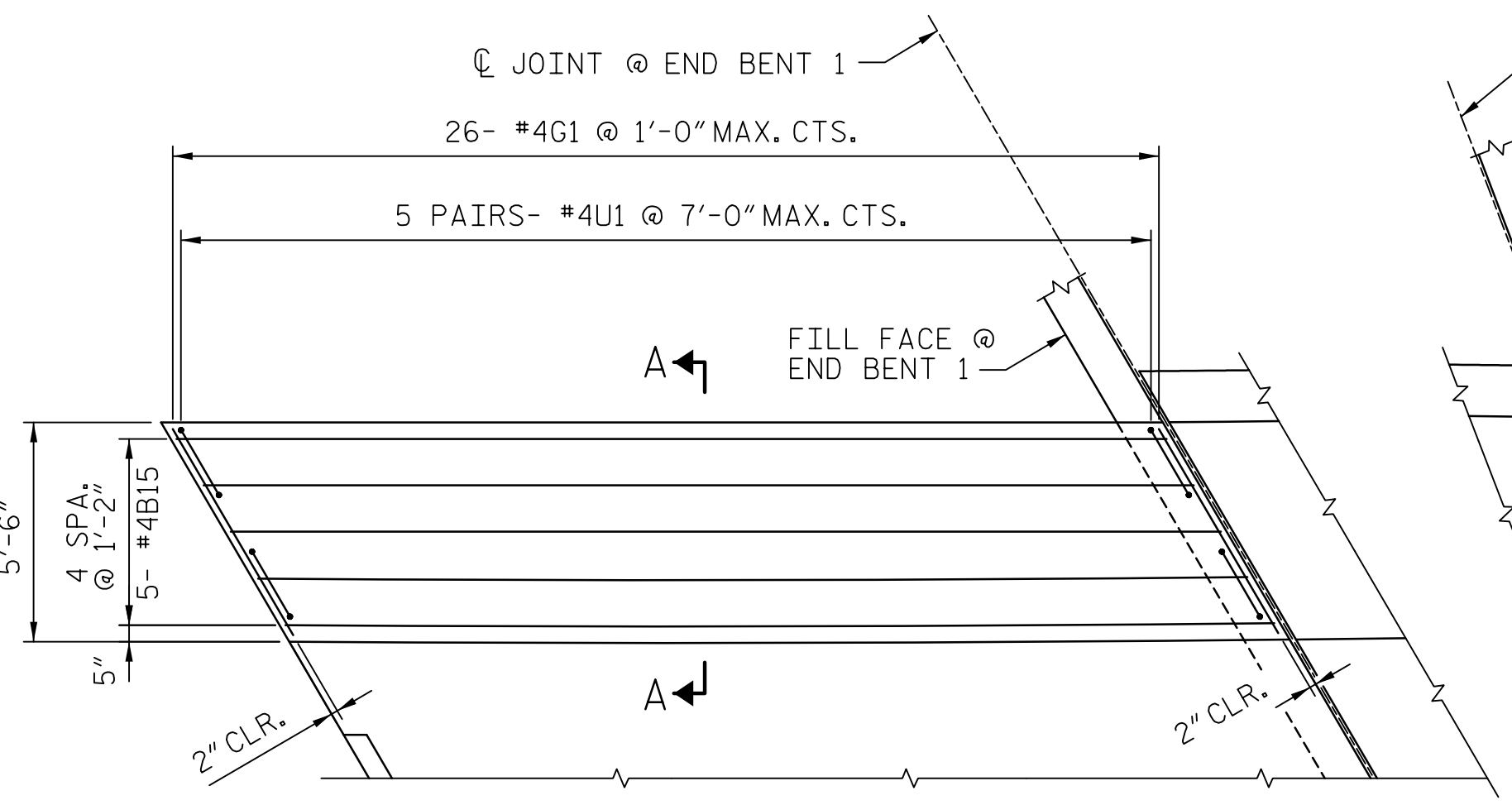
PLAN @ END BENT #1



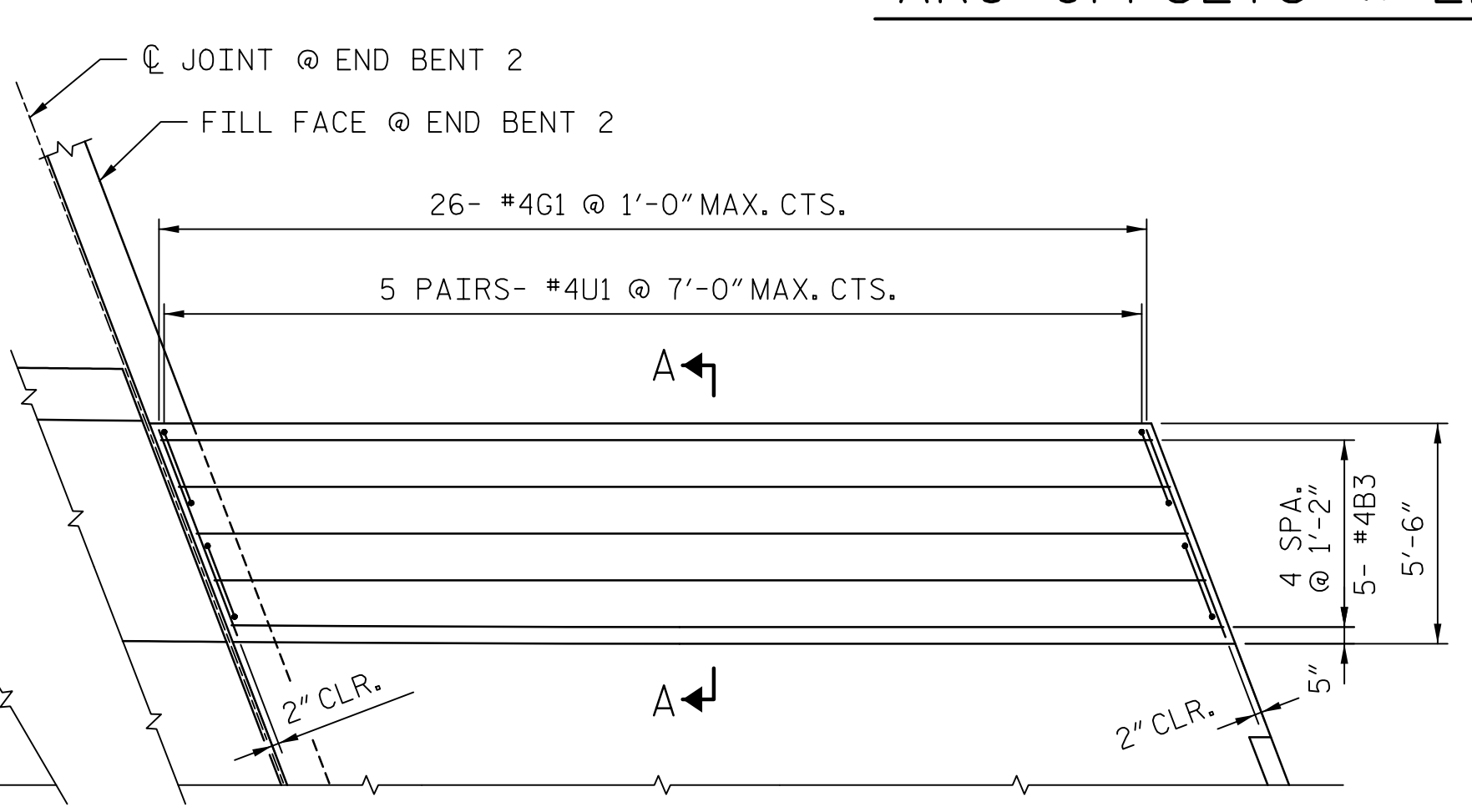
RIGHT SIDE - EDGE OF SLAB
ARC OFFSETS @ END BENT #1



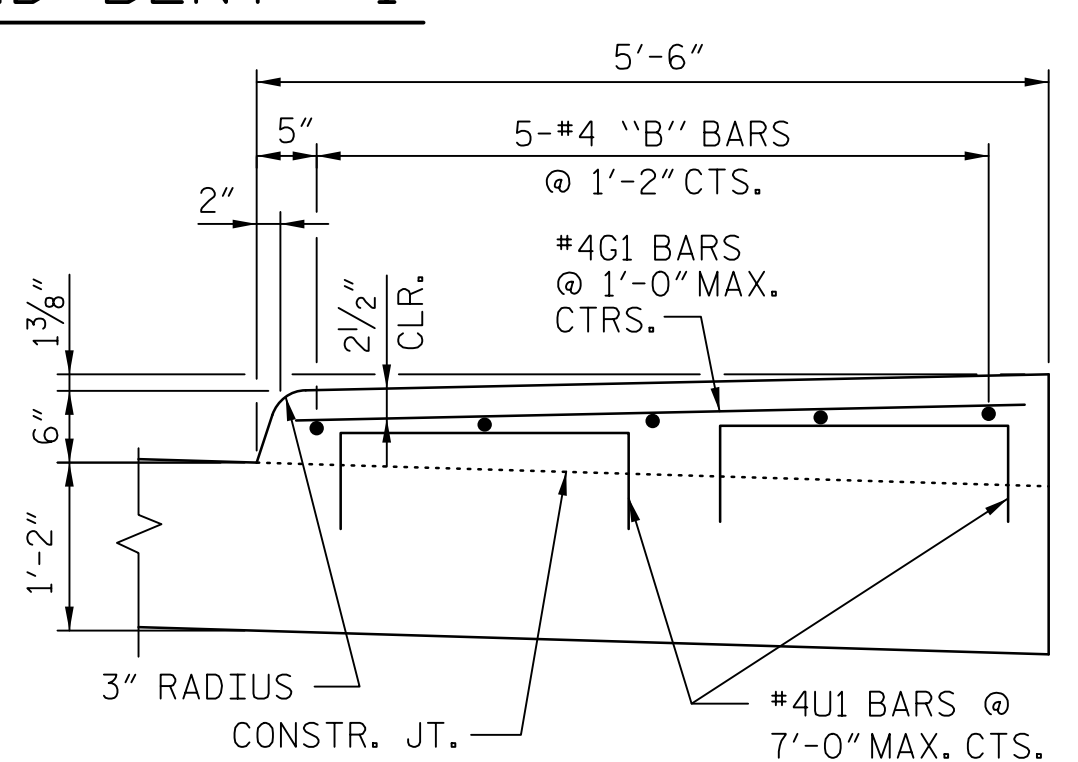
PLAN @ END BENT #2



SIDEWALK PLAN
(END BENT #1 LEFT SHOWN,
END BENT #1 RIGHT SIMILAR)



SIDEWALK PLAN
(END BENT #2 LEFT SHOWN,
END BENT #2 RIGHT SIMILAR)



SECTION A-A
SIDEWALK DETAILS

NOTE:
GROOVED CONTRACTION JOINT, 1/2" IN DEPTH, SHALL BE TOOLED IN ALL EXPOSED FACES OF THE SIDEWALK IN ACCORDANCE WITH ARTICLE 825-10(B) OF THE STANDARD SPECIFICATIONS. THE CONTRACTION JOINT SHALL BE LOCATED AT A SPACING OF 8 FT. TO 10 FT. BETWEEN EXPANSION JOINTS. NO CONTRACTION JOINTS WILL BE REQUIRED FOR SEGMENTS LESS THAN 10 FEET IN LENGTH.

DOCUMENT NOT CONSIDERED
FINAL UNLESS ALL
SIGNATURES COMPLETED

AECOM
AECOM TECHNICAL SERVICES, INC.
701 CORPORATE CENTER DRIVE, SUITE 475
RALEIGH, NC 27607
(919) 854-6200 www.aecom.com
AECOM License No. F-0342

SEAL
1330474
John C. Morris
REGISTERED PROFESSIONAL ENGINEER
JOHN C. MORRIS

1/12/2016

PROJECT NO. U-2707
FORSYTH COUNTY
STATION: 17+34.88 -Y-
SHEET 2 OF 3 BRIDGE NO. 109

STATE OF NORTH CAROLINA DEPARTMENT OF TRANSPORTATION RALEIGH					
BRIDGE APPROACH SLAB FOR FLEXIBLE PAVEMENT					
REVISIONS					
NO.	BY:	DATE:	NO.	BY:	DATE:
1			3		
2			4		
SHEET NO. S-85					TOTAL SHEETS 86

DRAWN BY: MTB DATE: 11/2015
CHECKED BY: JCM DATE: 11/2015