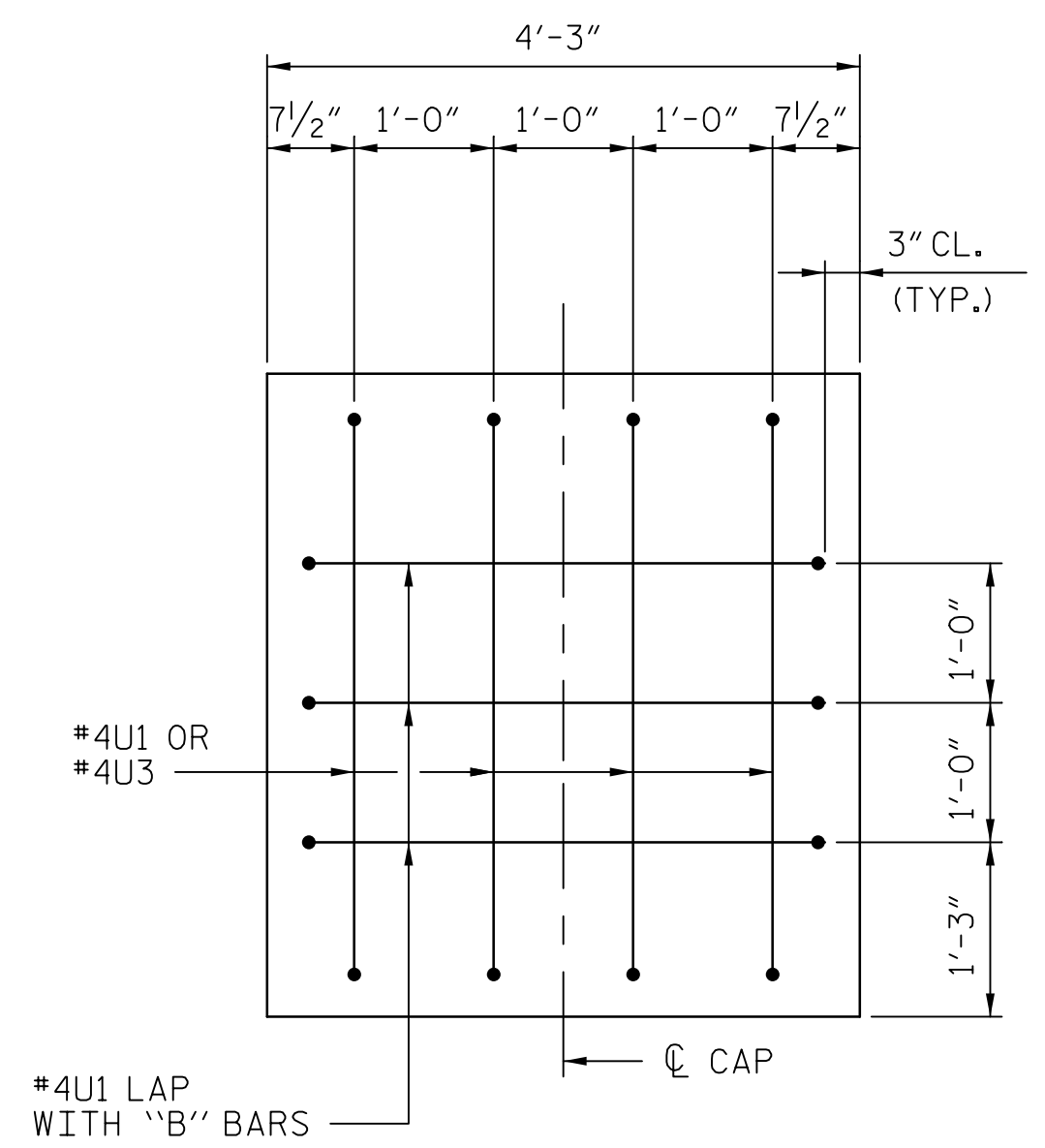
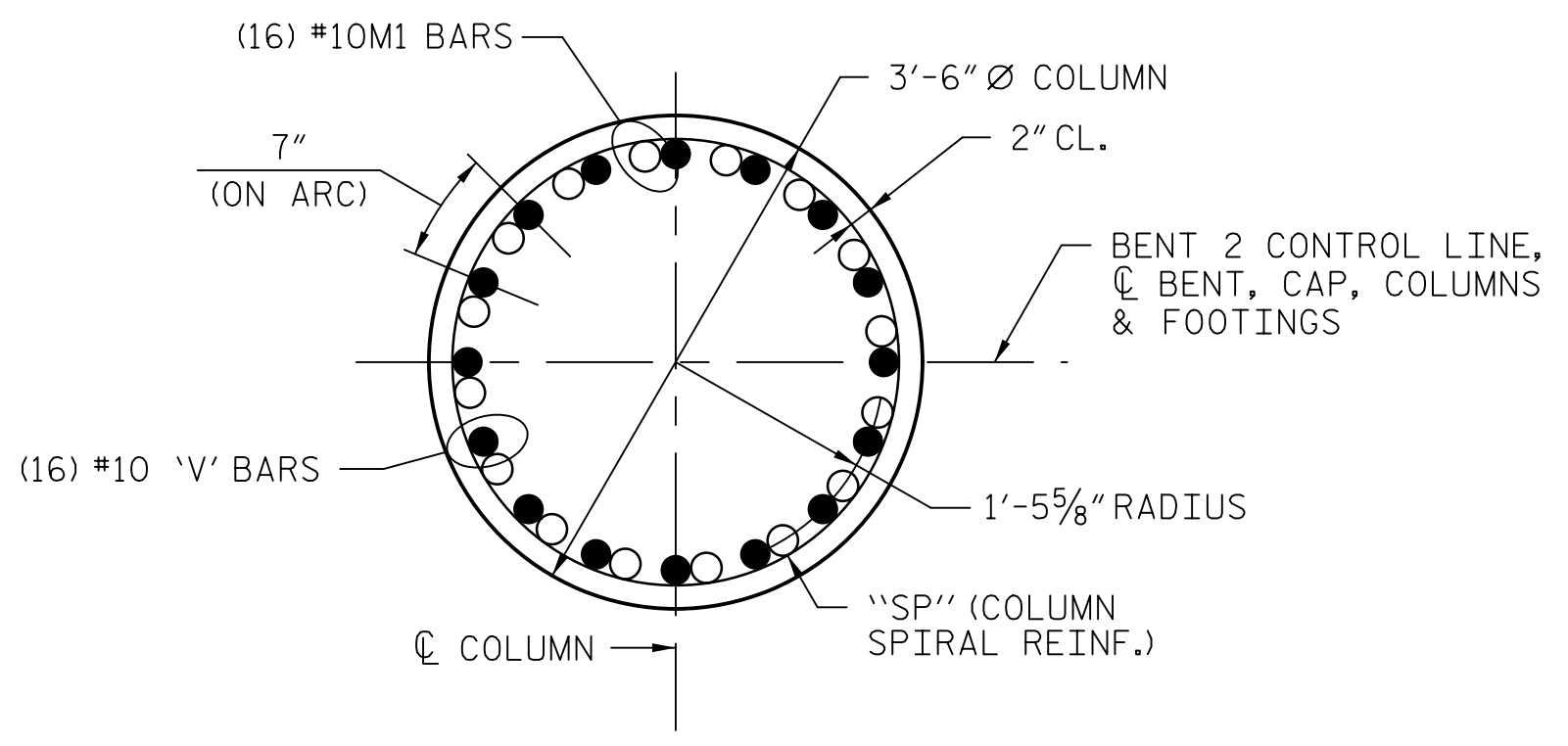


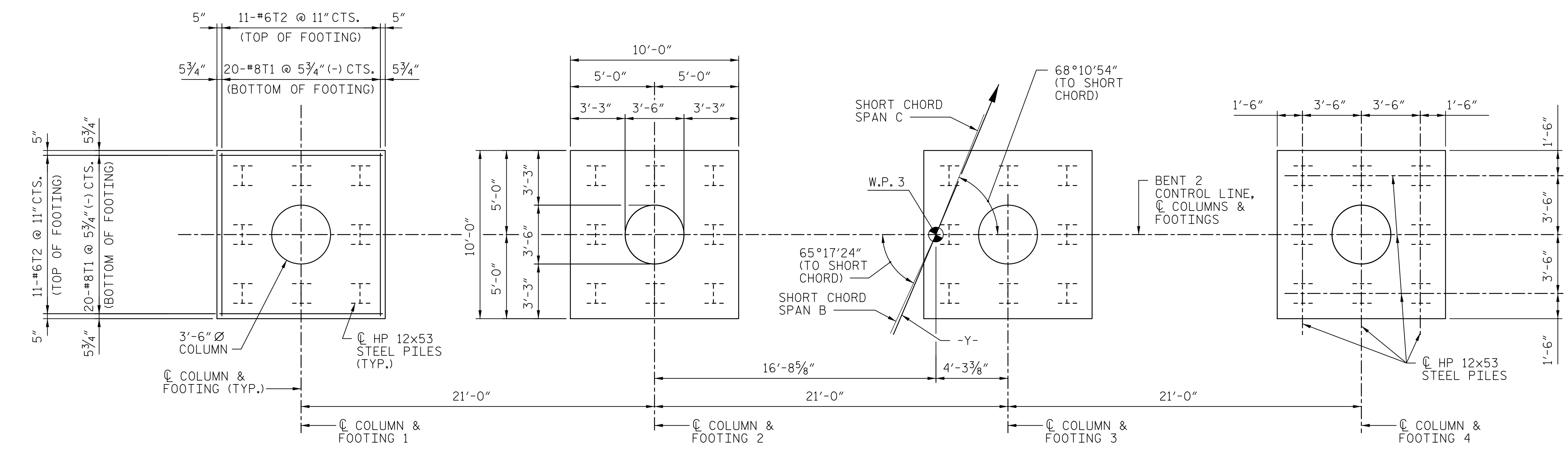
SECTION "A-A"



END VIEW "B-B"  
(RIGHT END SHOWN, LEFT END SIMILAR)



SECTION "C-C"

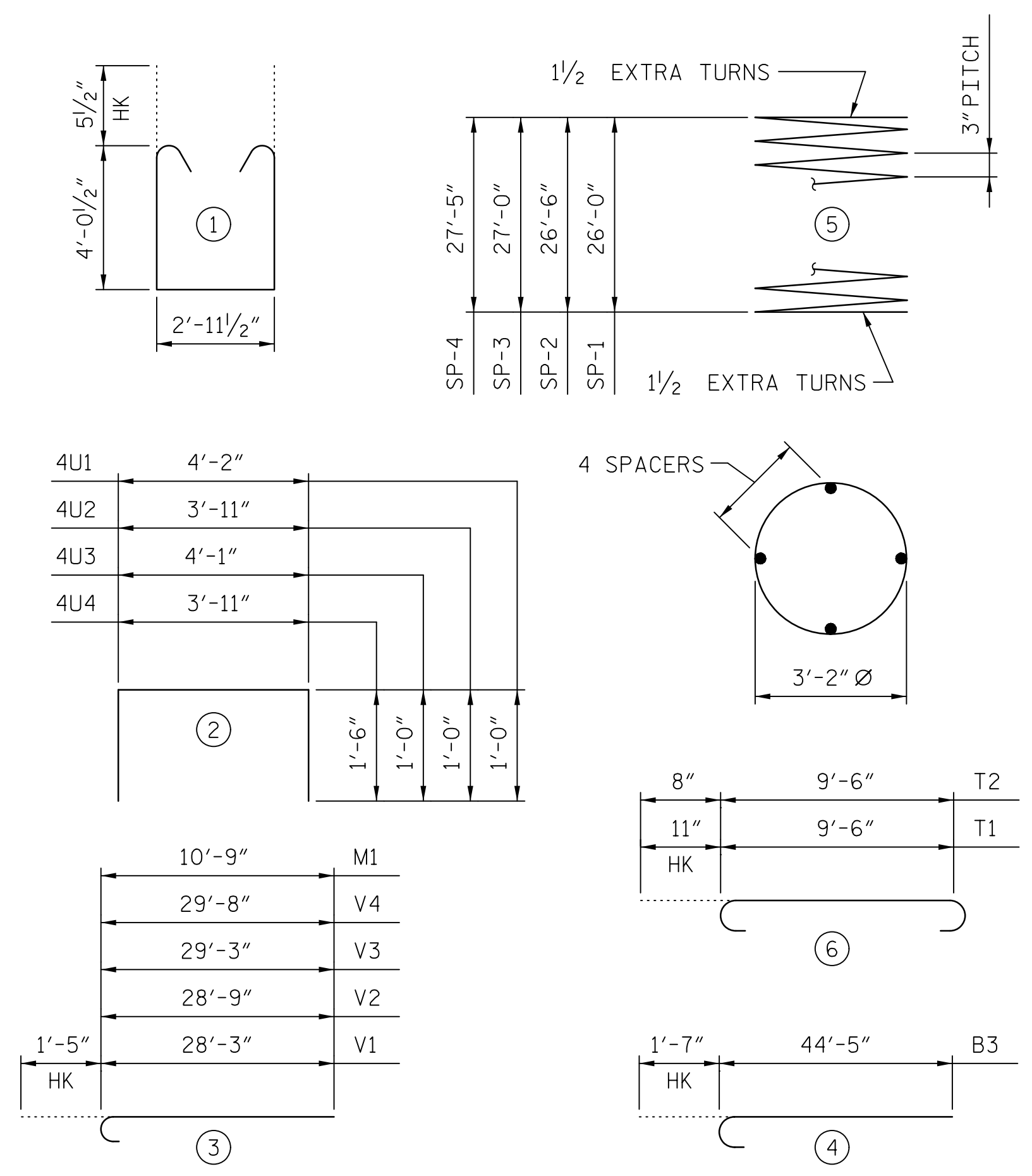


PLAN OF FOOTINGS

SPLICE LENGTHS		
BAR SIZE	TOP BAR	BASIC
#9	8'-9"	6'-3"
#10	11'-1"	7'-11"
#11	13'-7"	9'-9"

BAR TYPES

ALL BAR DIMENSIONS ARE OUT TO OUT.



BILL OF MATERIAL

BENT 2

BAR	NO.	SIZE	TYPE	LENGTH	WEIGHT
B1	12	#10	STR	40'-6"	2091
B2	12	#5	STR	38'-1"	477
B3	10	#11	(4)	46'-0"	2445
B4	5	#4	STR	9'-11"	33
B5	30	#4	STR	9'-7"	192
B6	5	#4	STR	4'-5"	15
B7	10	#9	STR	40'-11"	1391
B8	8	#9	STR	39'-8"	1079
M1	64	#10	(3)	12'-2"	3351
S1	258	#5	(1)	12'-0"	3229
T1	160	#8	(6)	11'-4"	4842
T2	88	#6	(6)	10'-10"	1432
U1	4	#4	(2)	6'-2"	16
U2	6	#4	(2)	5'-11"	24
U3	4	#4	(2)	6'-1"	16
U4	84	#4	(2)	6'-11"	388
V1	16	#10	(3)	29'-8"	2042
V2	16	#10	(3)	30'-2"	2077
V3	16	#10	(3)	30'-8"	2111
V4	16	#10	(3)	31'-1"	2140

REINFORCING STEEL		LBS.	29391	
SP-1	1	***	(5) 1050'-9"	702
SP-2	1	***	(5) 1070'-6"	715
SP-3	1	***	(5) 1090'-0"	728
SP-4	1	***	(5) 1106'-6"	739

SPIRAL REINFORCING STEEL		LBS.	2884
*** THE "SP" SPIRAL REINFORCING STEEL SHALL BE W20 OR D-20 COLD DRAWN WIRE OR #4 PLAIN OR DEFORMED BAR.			

BENT 2 TOTAL QUANTITIES

CLASS A CONCRETE		
POUR 1 (FOOTINGS)	C.Y.	59.2
POUR 2 (COLUMNS)	C.Y.	37.7
POUR 3 (CAP)	C.Y.	53.3
TOTAL CLASS AA CONCRETE C.Y. 150.2		
HP 12 x 53 STEEL PILES NO. 32	LIN. FT.	1440

PROJECT NO. U-2707  
 FORSYTH COUNTY  
 STATION: 17+34.88 -Y-  
 SHEET 3 OF 3 BRIDGE NO. 109

**AECOM**  
 AECOM TECHNICAL SERVICES, INC.  
 701 CORPORATE CENTER DRIVE, SUITE 475  
 RALEIGH, NC 27607  
 (919) 854-6200 www.aecom.com  
 AECOM License No. F-0342

SEAL  
 NORTH CAROLINA PROFESSIONAL ENGINEER  
 JOHN C. MORRISON  
 1/12/2016

DEPARTMENT OF TRANSPORTATION RALEIGH					
SUPERSTRUCTURE BENT 2 SECTIONS AND DETAILS					
REVISIONS					SHEET NO.
NO.	BY:	DATE:	NO.	BY:	DATE:
					S-77
					TOTAL SHEETS 86

DOCUMENT NOT CONSIDERED FINAL UNLESS ALL SIGNATURES COMPLETED

DATE: 1/12/2016 TIME: 8:55:23 AM  
 USER: jcm\jcm DON: A:\EIT\Proj\109-C-040-002-D09-U2707-SMU-ST1\_B2\_03.dgn

DRAWN BY: DDL DATE: 11/2015  
 CHECKED BY: JCM DATE: 11/2015