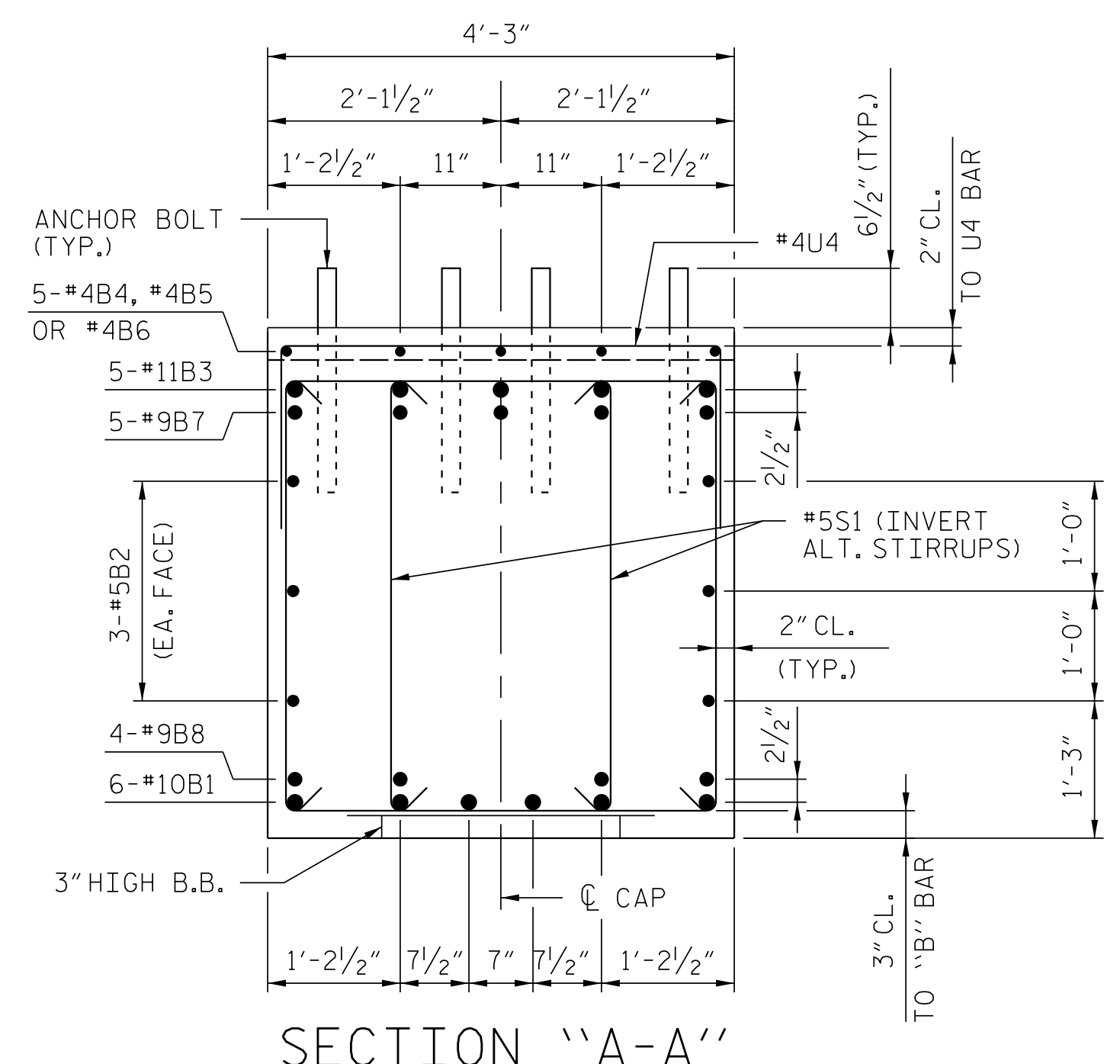
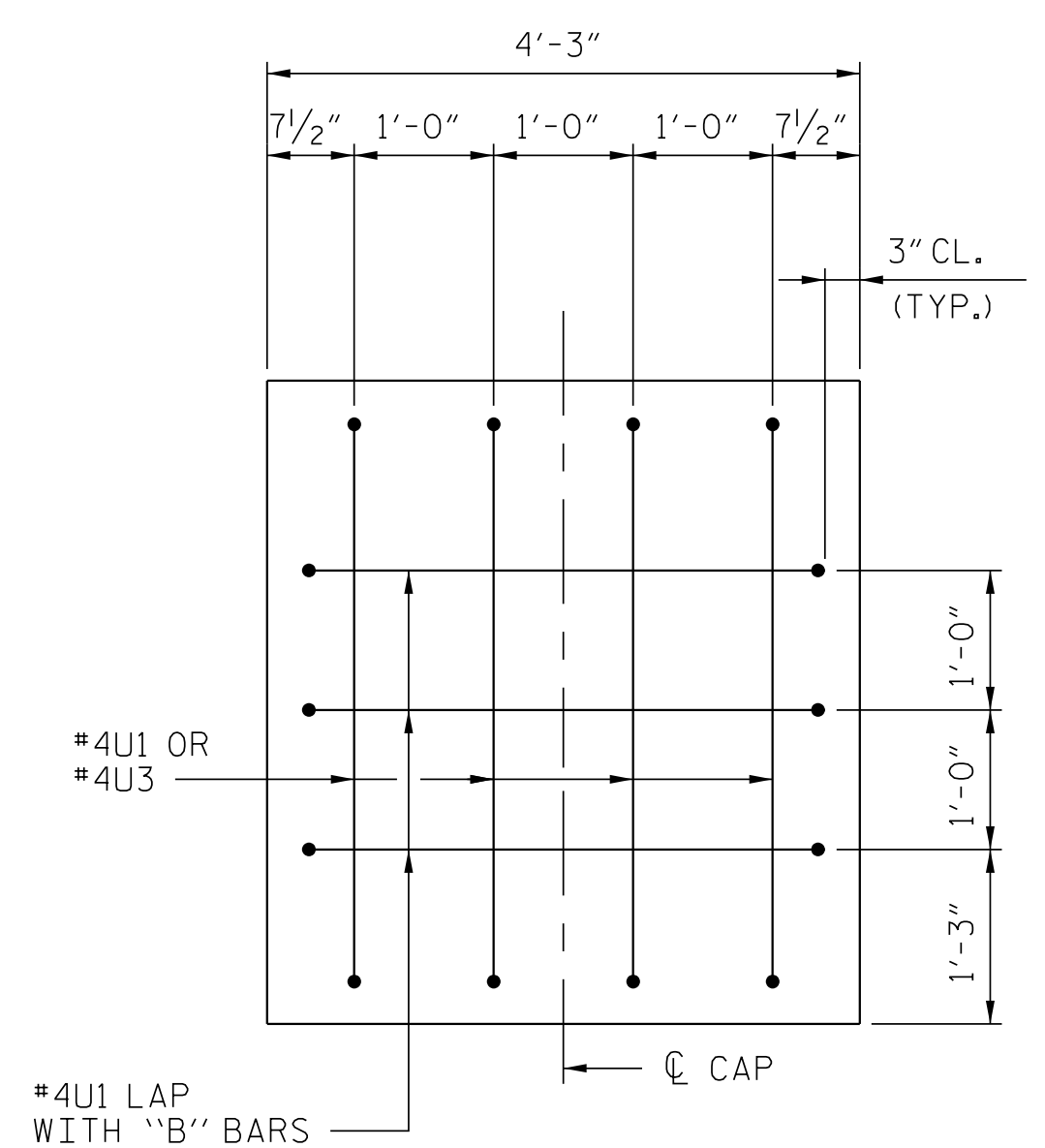


DATE: 3/1/2016  
TIME: 2:40:57 PM

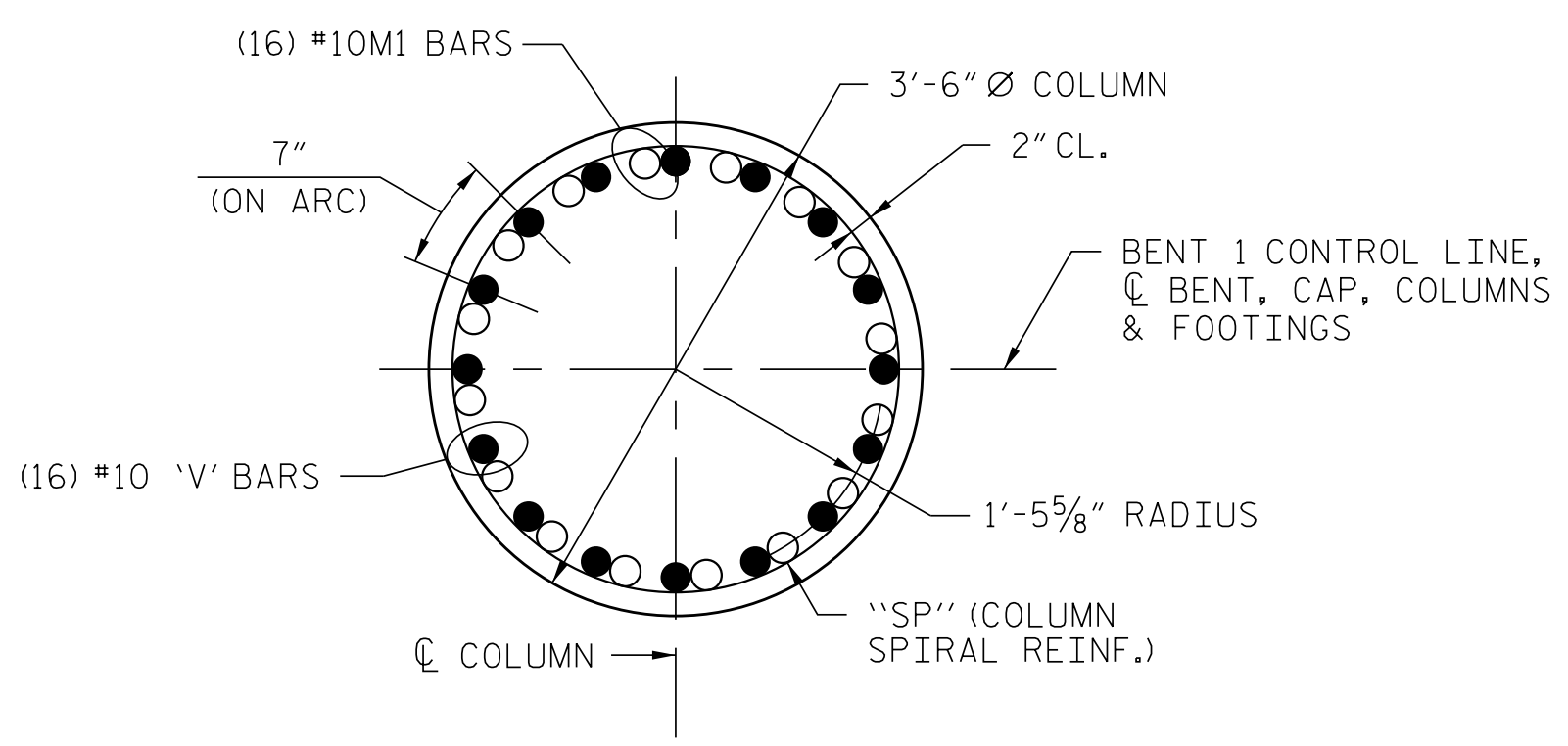
USER: MCF150C  
DGN: R:\644626\400\_Technical\450\_MCDOT\_Site\_Tech\_Design\_Files\Structures\Bridges\09\Coord\A02\_063\_U2707\_SML\_S74\_B1\_03.dgn



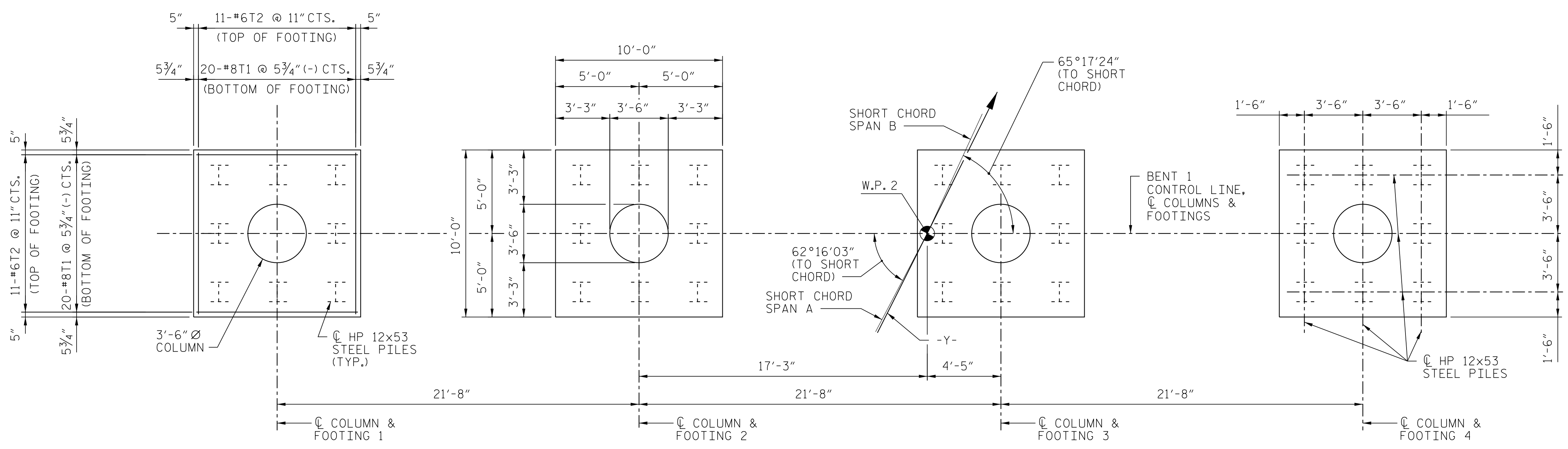
SECTION "A-A"



END VIEW "B-B"  
(RIGHT END SHOWN, LEFT END SIMILAR)



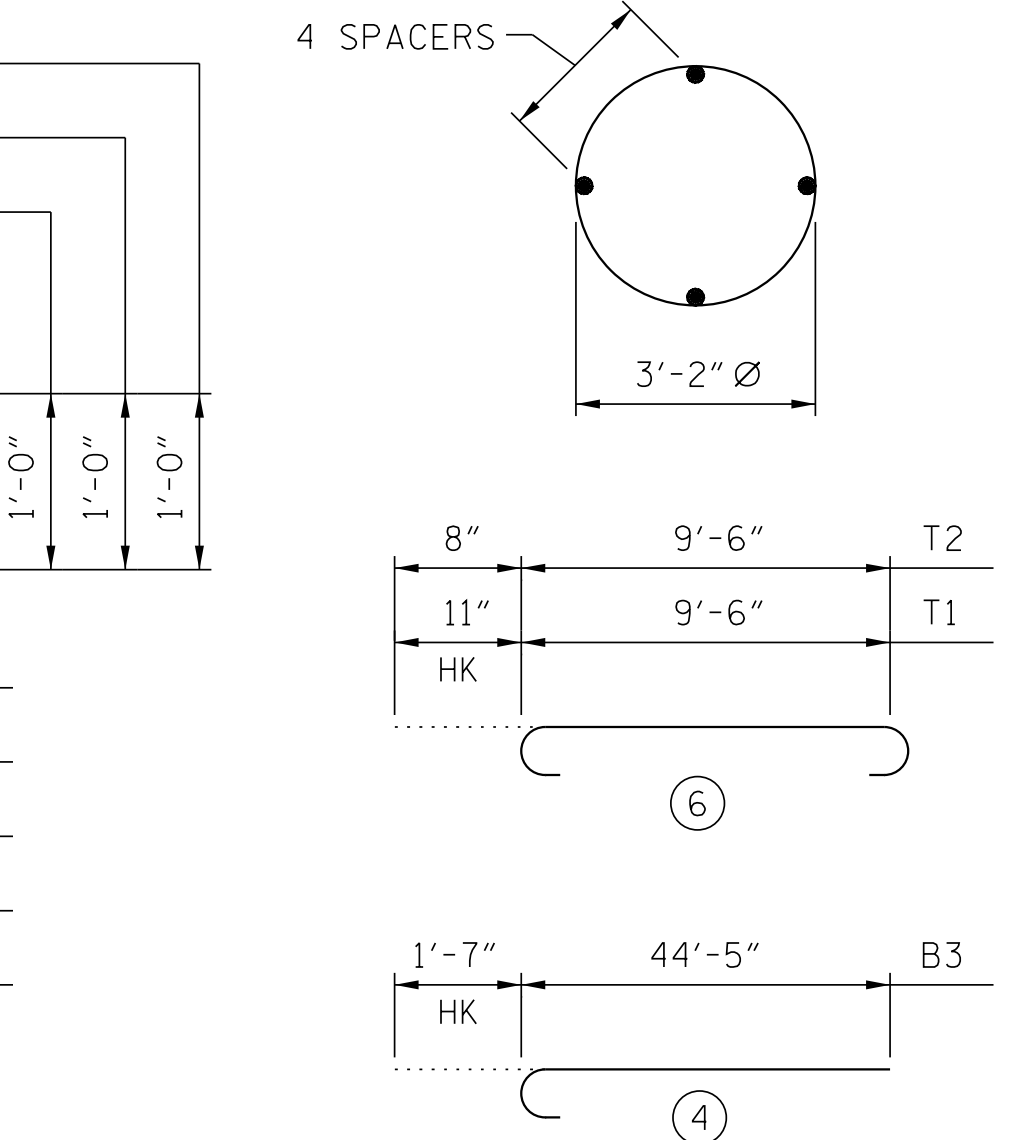
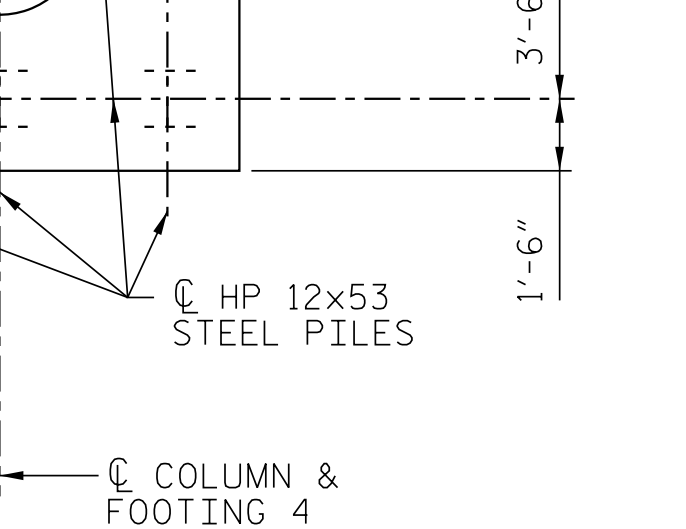
SECTION "C-C"



PLAN OF FOOTINGS

SPLICE LENGTHS		
BAR SIZE	TOP BAR	BASIC
#9	8'-9"	6'-3"
#10	11'-1"	7'-11"
#11	13'-7"	9'-9"

DOCUMENT NOT CONSIDERED FINAL UNLESS ALL SIGNATURES COMPLETED



BAR TYPES

ALL BAR DIMENSIONS ARE OUT TO OUT.

BILL OF MATERIAL

BENT 1						
BAR	NO.	SIZE	TYPE	LENGTH	WEIGHT	
B1	12	#10	STR	41'-7"	2147	
B2	12	#5	STR	39'-2"	489	
B3	10	#11	(4)	46'-0"	2445	
B4	5	#4	STR	10'-0"	33	
B5	30	#4	STR	9'-11"	199	
B6	5	#4	STR	4'-5"	15	
B7	10	#9	STR	41'-11"	1425	
B8	8	#9	STR	40'-8"	1106	
M1	64	#10	(3)	12'-2"	3351	
S1	258	#5	(1)	12'-0"	3229	
T1	160	#8	(6)	11'-4"	4842	
T2	88	#6	(6)	10'-10"	1432	
U1	4	#4	(2)	6'-4"	16	
U2	6	#4	(2)	5'-11"	24	
U3	4	#4	(2)	6'-2"	17	
U4	84	#4	(2)	6'-11"	388	
V1	16	#10	(3)	28'-6"	1962	
V2	16	#10	(3)	29'-2"	2008	
V3	16	#10	(3)	29'-10"	2054	
V4	16	#10	(3)	30'-6"	2100	
REINFORCING STEEL					LBS.	29282
SP-1	1	***	(5)	1004'-11"	671	
SP-2	1	***	(5)	1031'-2"	689	
SP-3	1	***	(5)	1057'-5"	706	
SP-4	1	***	(5)	1083'-6"	724	
SPIRAL REINFORCING STEEL					LBS.	2790
*** THE "SP" SPIRAL REINFORCING STEEL SHALL BE W20 OR D-20 COLD DRAWN WIRE OR #4 PLAIN OR DEFORMED BAR.						
BENT 1 TOTAL QUANTITIES						
CLASS A CONCRETE						
POUR 1 (FOOTINGS)				C.Y.	59.2	
POUR 2 (COLUMNS)				C.Y.	36.5	
POUR 3 (CAP)				C.Y.	55.5	
TOTAL CLASS A CONCRETE				C.Y.	151.2	
HP 12 x 53 STEEL PILES				NO. 32		
				LIN. FT.	640	
STEEL PILE POINTS				EA.	32	

PROJECT NO. U-2707  
 FORSYTH COUNTY  
 STATION: 17+34.88 -Y-  
 SHEET 3 OF 3 BRIDGE NO. 109

**AECOM**  
 AECOM TECHNICAL SERVICES, INC.  
 701 CORPORATE CENTER DRIVE, SUITE 475  
 RALEIGH, NC 27607  
 (919) 854-6200 www.aecom.com  
 AECOM License No. F-0342

SEAL  
 NORTH CAROLINA PROFESSIONAL ENGINEER  
 No. 030474  
 JOHN C. MORRISON  
 3/1/2016

STATE OF NORTH CAROLINA  
 DEPARTMENT OF TRANSPORTATION  
 RALEIGH

SUBSTRUCTURE  
 BENT 1  
 SECTION AND DETAILS

REVISIONS					
NO.	BY:	DATE:	NO.	BY:	DATE:

SHEET NO. S-74  
 TOTAL SHEETS 86