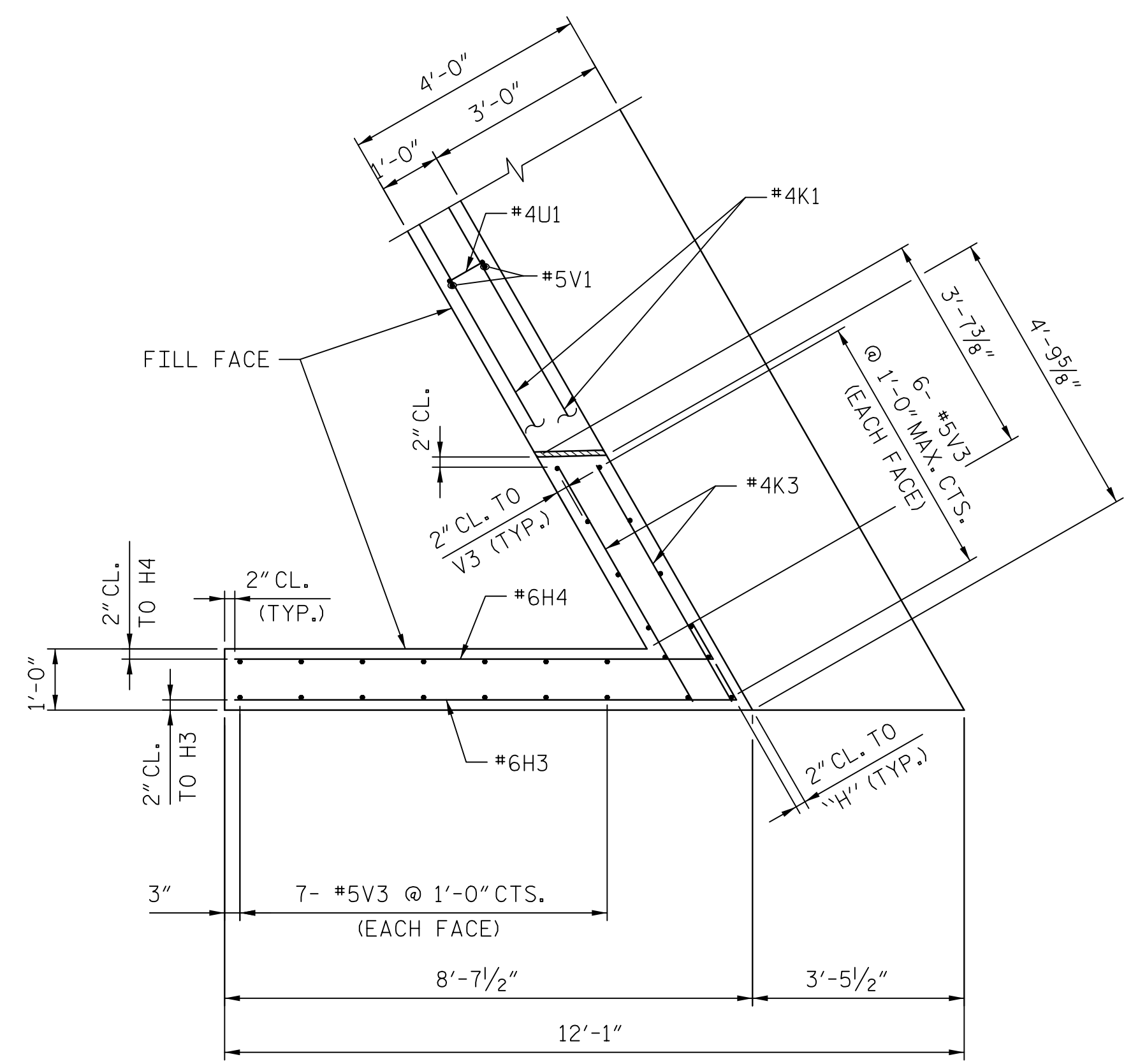
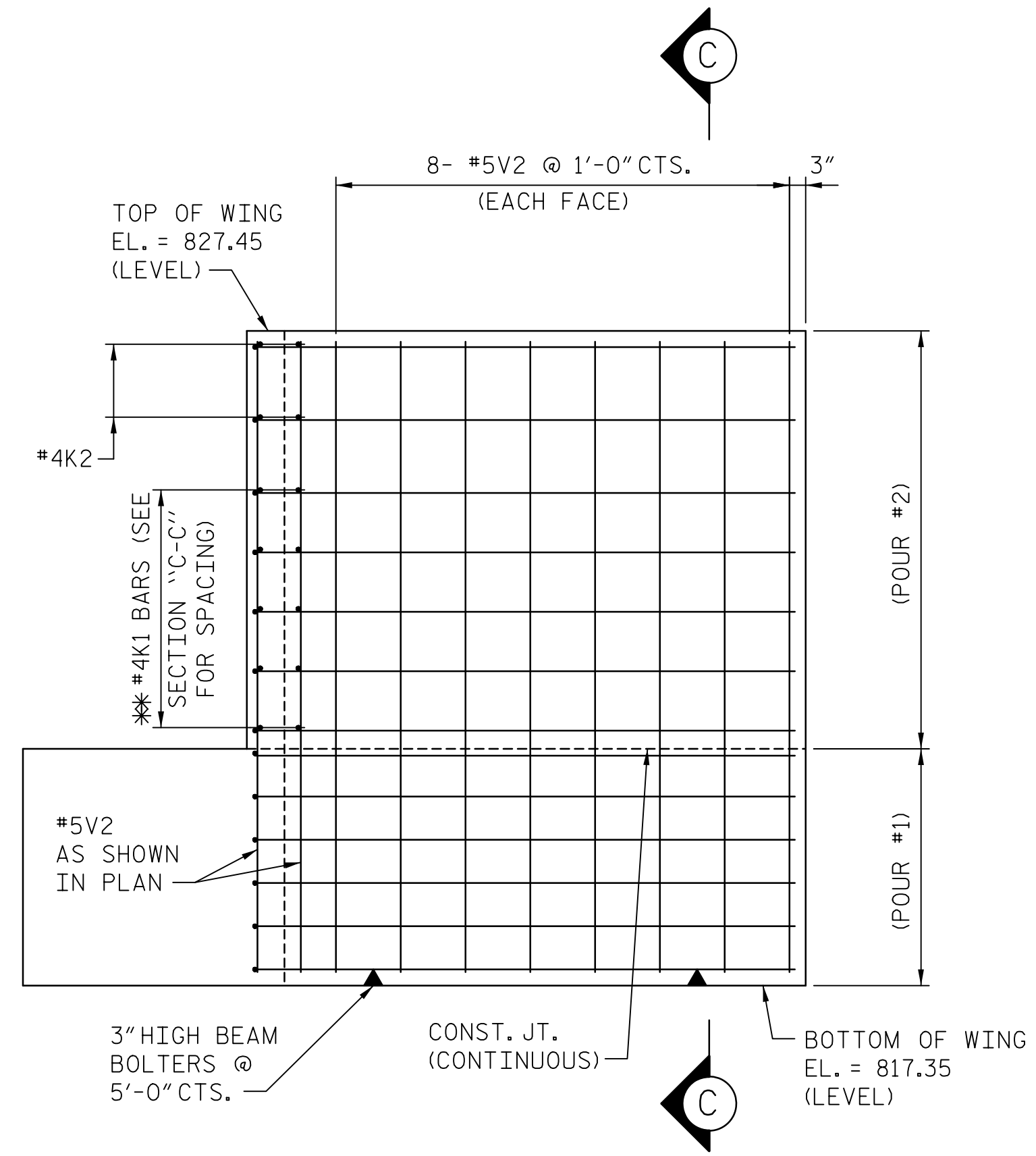


PLAN - WINGWALL 1

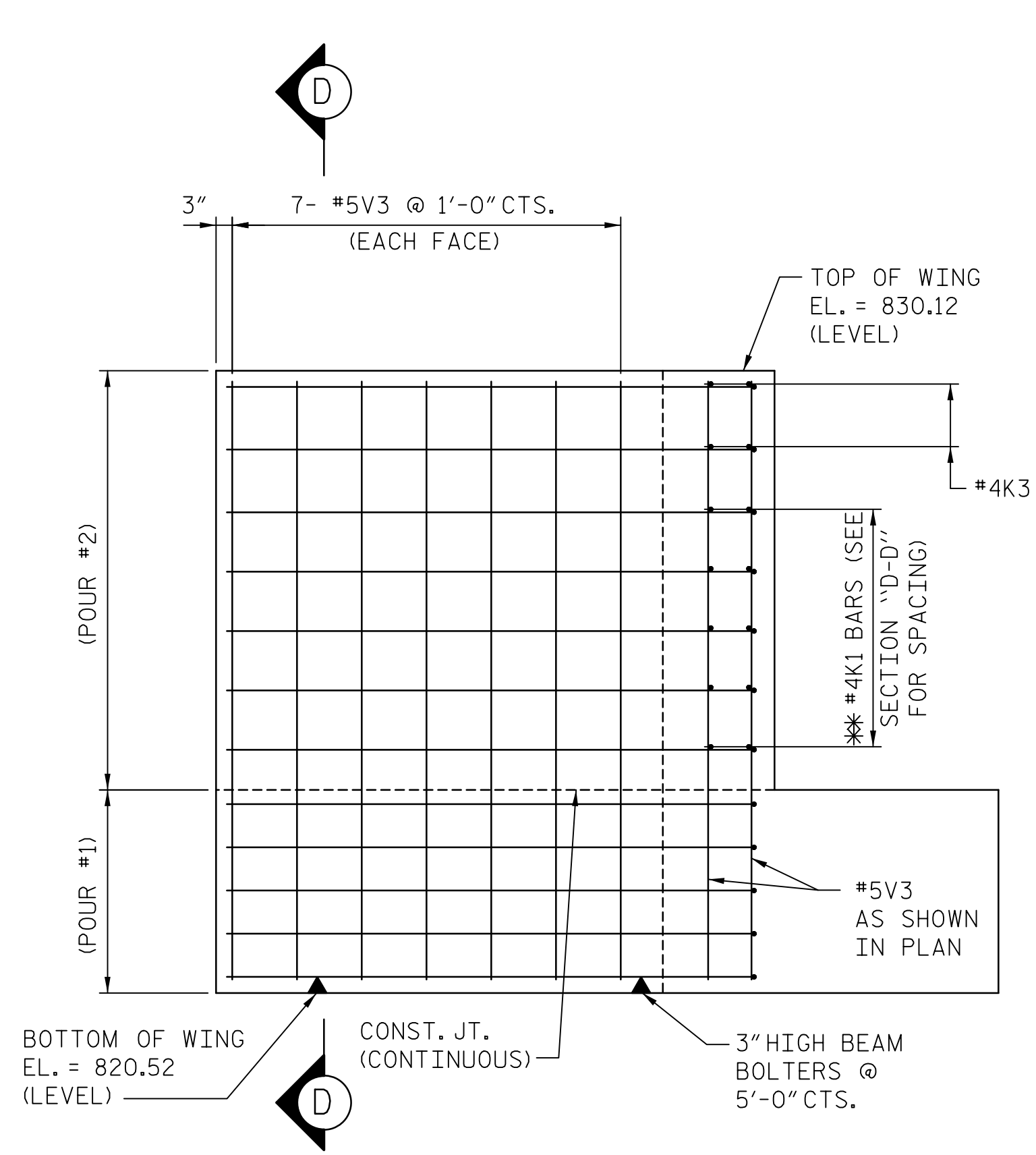


PLAN - WINGWALL 2



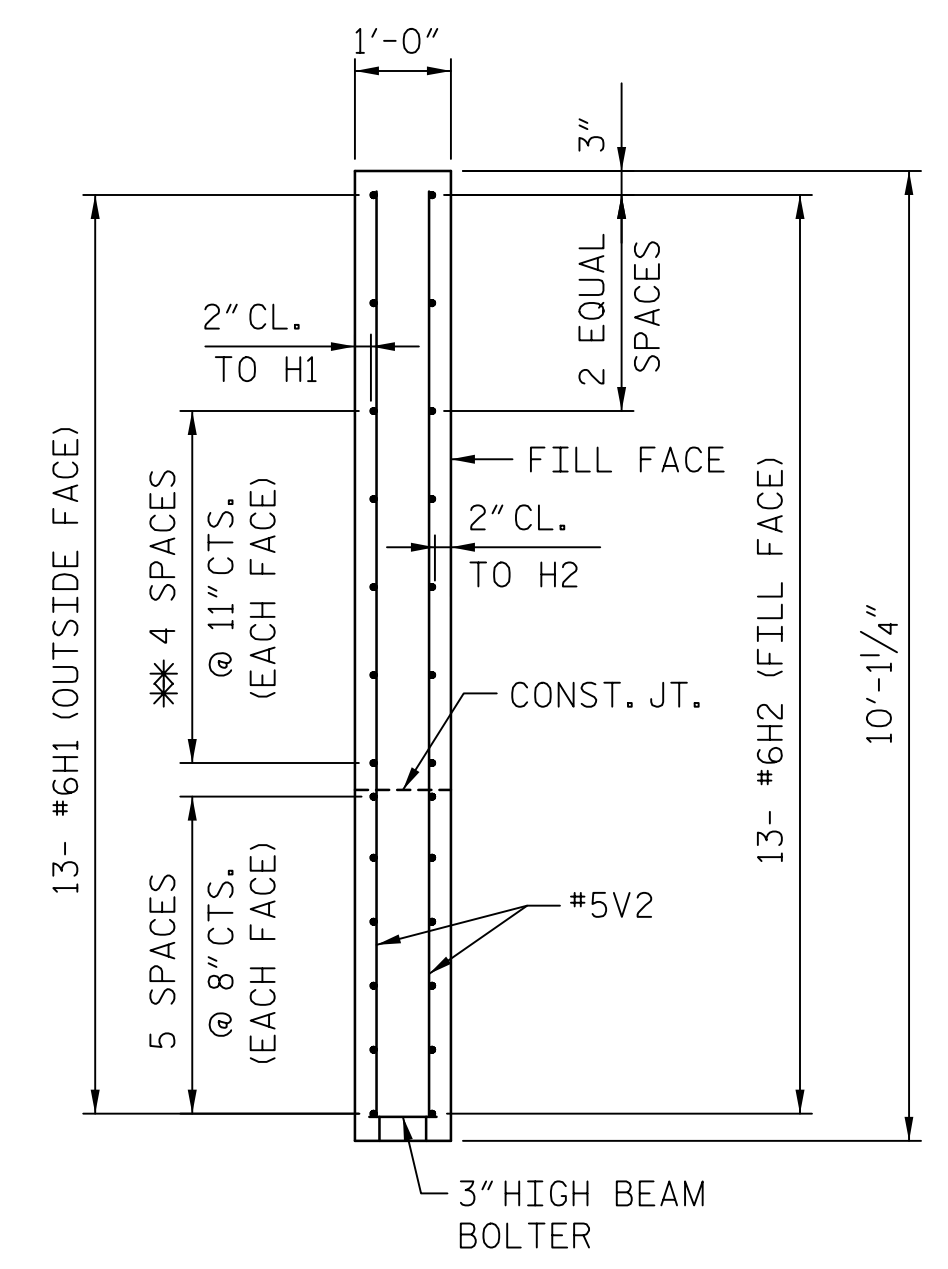
ELEVATION - WINGWALL 1

* PLACE #6 'H' BARS TO MATCH #4K1 BARS IN BACKWALL

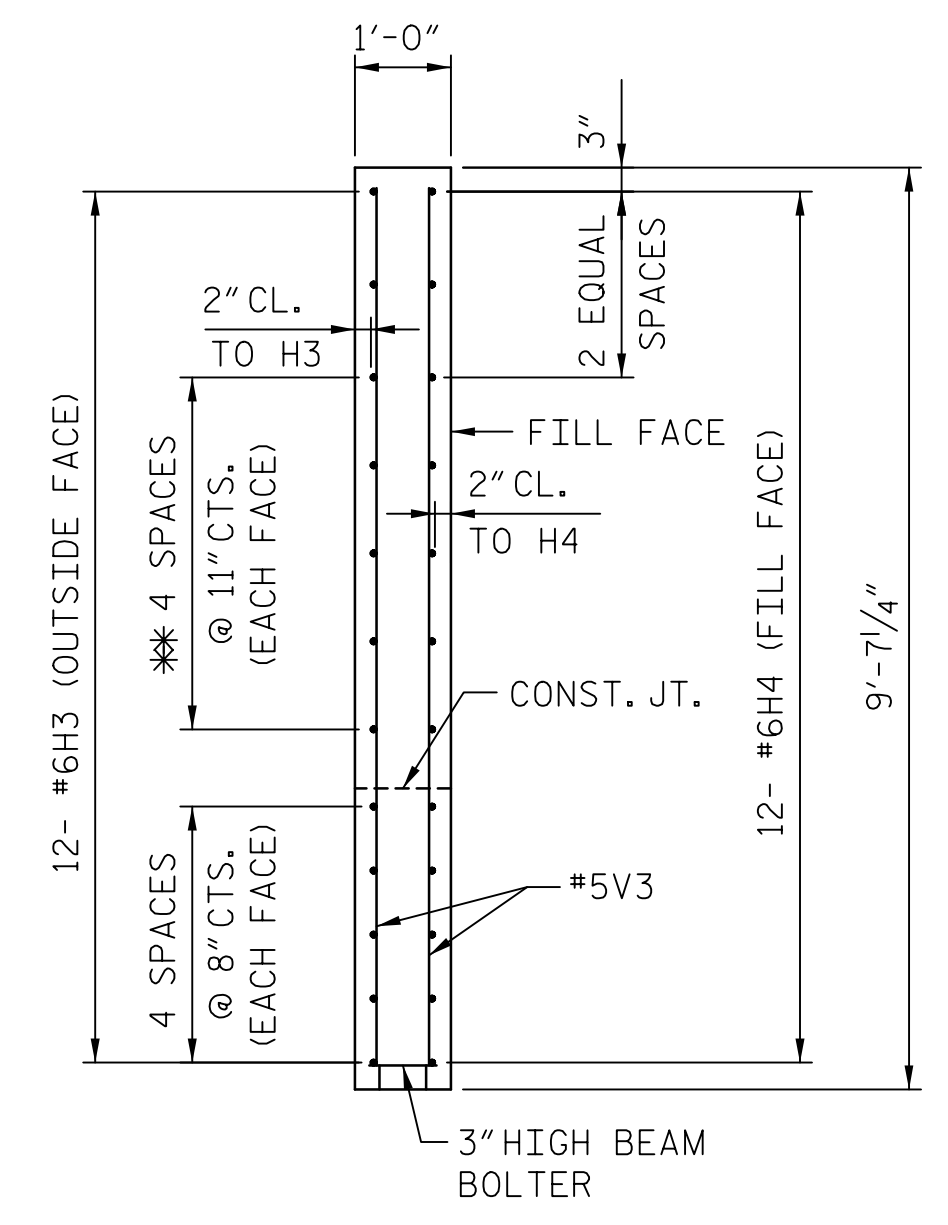


ELEVATION - WINGWALL 2

* PLACE #6 'H' BARS TO MATCH #4K1 BARS IN BACKWALL



SECTION "C-C"



SECTION "D-D"

NOTES:
SEE SHEET 4 OF 4 FOR NOTES.

DATE: 1/12/2016
TIME: 8:55:55 AM

USER: A:\a\compton
DGN: A:\Bridges\09\09040402_055_U2707_SML_S70_EBI_03.dgn

DRAWN BY: MTB DATE: 11/2015
CHECKED BY: DPS DATE: 11/2015

PROJECT NO. U-2707
FORSYTH COUNTY
STATION: 17+34.88 -Y-
SHEET 3 OF 4 BRIDGE NO. 109

AECOM
AECOM TECHNICAL SERVICES, INC.
701 CORPORATE CENTER DRIVE, SUITE 475
RALEIGH, NC 27607
(919) 854-6200 www.aecom.com
AECOM License No. F-0342

SEAL
1030474
John C. Morris
REGISTERED PROFESSIONAL ENGINEER
JOHN C. MORRIS

1/12/2016

STATE OF NORTH CAROLINA DEPARTMENT OF TRANSPORTATION RALEIGH					
SUBSTRUCTURE END BENT 1 SECTIONS AND DETAILS					
REVISIONS					
NO.	BY:	DATE:	NO.	BY:	DATE:
SHEET NO. S-70					TOTAL SHEETS 86

DOCUMENT NOT CONSIDERED
FINAL UNLESS ALL
SIGNATURES COMPLETED