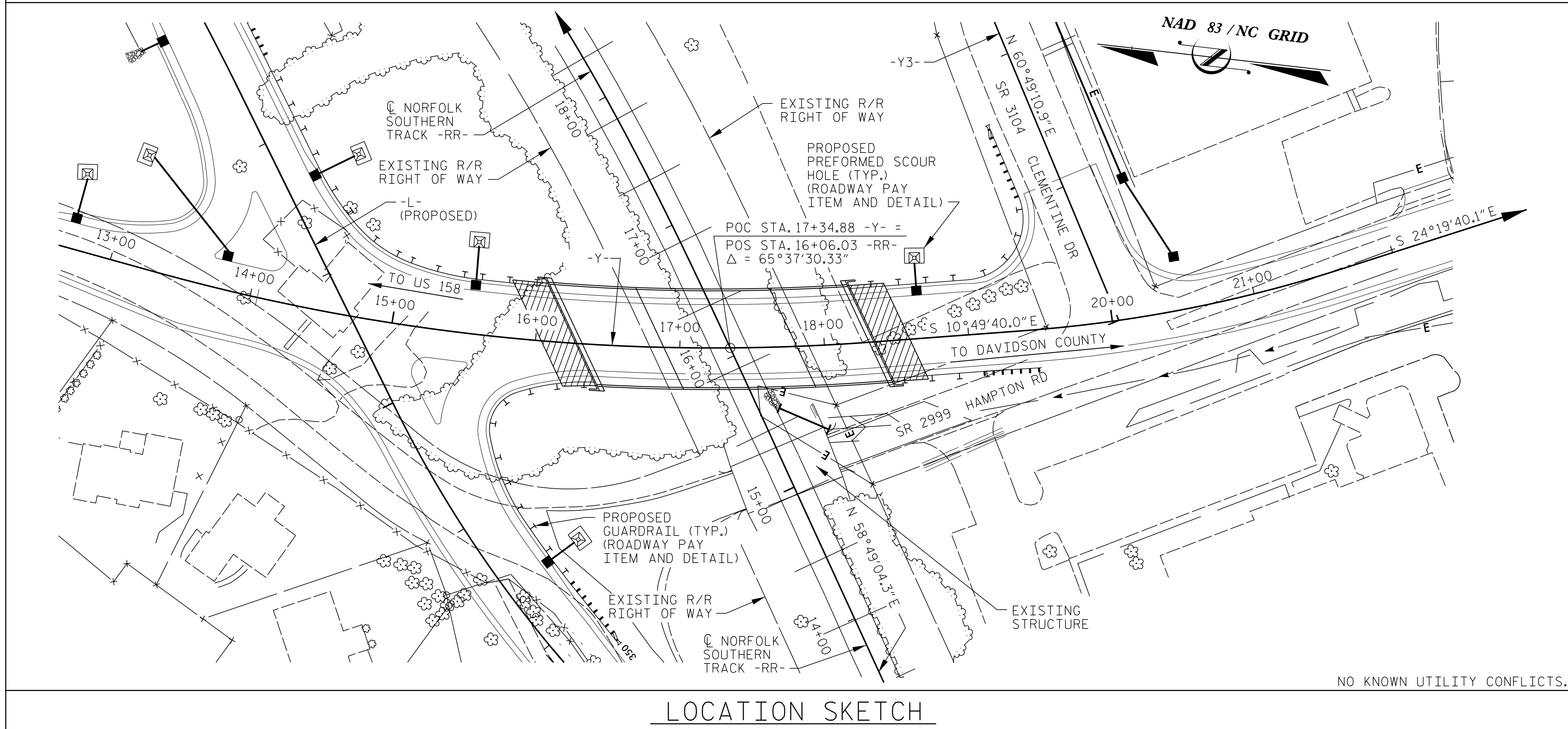


BENCH MARK: BM-3 RAILROAD SPIKE IN BASE OF 18" WHITE OAK,
 139.00' RIGHT OF STA. 9+80.00 -Y-
 COORDINATES: N 824600 E 1594553
 ELEV. = 811.83



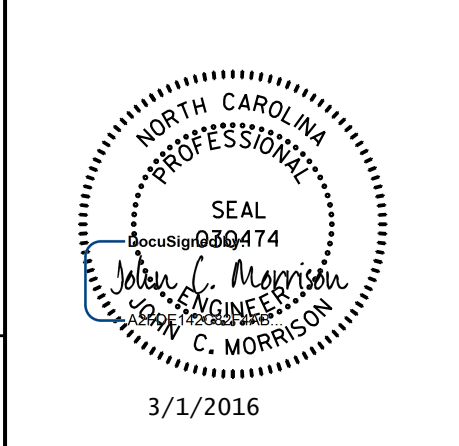
LOCATION SKETCH

TOTAL BILL OF MATERIAL

	REMOVAL OF EXISTING STRUCTURE AT STA. 17+34.88 -Y-	PILE EXCAVATION		FOUNDATION EXCAVATION FOR BENT	UNCLASSIFIED STRUCTURE EXCAVATION	REINFORCED CONCRETE DECK SLAB	GROOVING BRIDGE FLOORS	CLASS A CONCRETE	BRIDGE APPROACH SLABS	REINFORCING STEEL	SPIRAL COLUMN REINFORCING STEEL	54" PRESTRESSED CONCRETE GIRDERS		HP 12x53 STEEL PILES	STEEL PILE POINTS	TWO BAR METAL RAIL	1'-2" x 2'-6" CONCRETE PARAPET	72" CHAIN LINK FENCE	4" SLOPE PROTECTION	ELASTOMERIC BEARINGS	FOAM JOINT SEALS	ASBESTOS ASSESSMENT	
		IN SOIL	NOT IN SOIL									NO.	LIN. FT.										
	LUMP SUM	LIN. FT.	LIN. FT.	LUMP SUM	LUMP SUM	SQ. FT.	SQ. FT.	CU. YDS.	LUMP SUM	LBS.	LBS.	NO.	LIN. FT.	NO.	LIN. FT.	EACH	LIN. FT.	LIN. FT.	LIN. FT.	SQ. YDS.	LUMP SUM	LUMP SUM	LUMP SUM
SUPERSTRUCTURE						14285	13492		LUMP SUM			24	1615.23				394.2	409.2	406.7		LUMP SUM	LUMP SUM	
END BENT No. 1					LUMP SUM			65.7		10234				17	935					598			
BENT No. 1		276	44	LUMP SUM				151.2		29282	2790			32	640	32							
BENT No. 2				LUMP SUM				150.2		29391	2884			32	1440								
END BENT No. 2				LUMP SUM	LUMP SUM			59.6		8897				17	1105					533			
TOTAL	LUMP SUM	276	44	LUMP SUM	LUMP SUM	14285	13492	426.7	LUMP SUM	77804	5674	24	1615.23	96	4120	32	394.2	409.2	406.7	1131	LUMP SUM	LUMP SUM	LUMP SUM

PROJECT NO. U-2707
 FORSYTH COUNTY

STATION: 17+34.88 -Y-
 SHEET 4 OF 4 BRIDGE NO. 109



STATE OF NORTH CAROLINA
 DEPARTMENT OF TRANSPORTATION
 RALEIGH

GENERAL DRAWING
 FOR BRIDGE ON SR 2999
 (HAMPTON ROAD) OVER
 NORFOLK SOUTHERN RAILROAD
 BETWEEN US 158 AND SR 3104

REVISIONS						SHEET NO.
NO.	BY:	DATE:	NO.	BY:	DATE:	S-46
1			3			TOTAL SHEETS
2			4			86

DOCUMENT NOT CONSIDERED
 FINAL UNLESS ALL
 SIGNATURES COMPLETED

DATE: 3/1/2015
 TIME: 2:35:28 PM

USER: MCF50C
 DN: R:\64426\400_Technical\450_MCDOT_Site_Tech_Design_Files\Structures\Bridges\109\Coord\402_DOT_U2707_SML_S46_6004.dgn

DRAWN BY: KHC DATE: 10/2015
 CHECKED BY: JCM DATE: 10/2015