

**GRADE DATA -Y-**  
 (+)2.3400% (-)2.4533%  
 PI STA. 17+25.00 -Y-  
 ELEV. = 830.660  
 K = 44  
 V.C. = 210.000'

**SECTION ALONG -Y-**  
 (SECTIONS AT BENTS AND END BENTS ARE AT RIGHT ANGLES)

**SECTION THRU RAILROAD**  
 (LOOKING STATION AHEAD ALONG C TRACK)

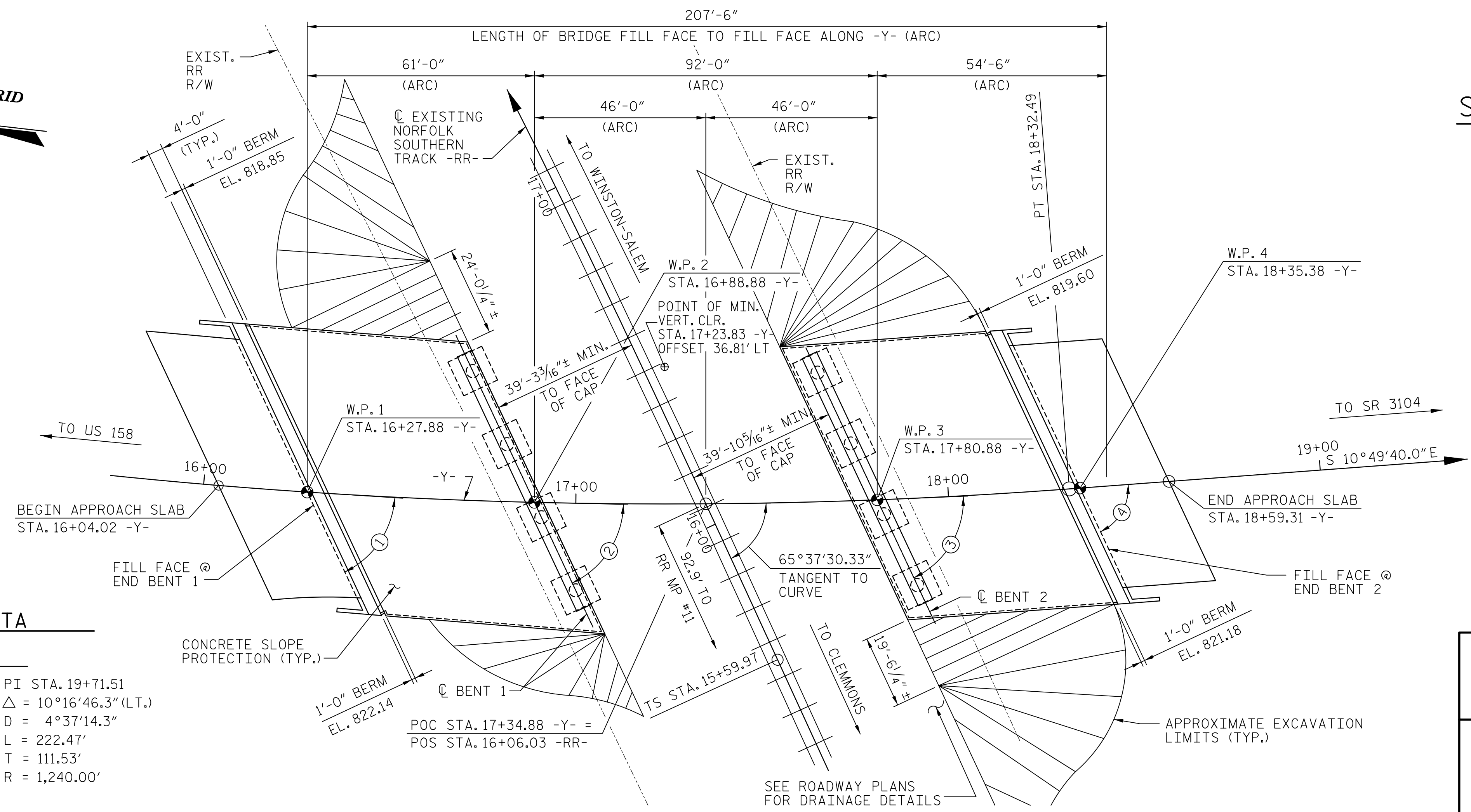
TOP OF RAIL ELEVATIONS EXISTING NORFOLK SOUTHERN TRACK	
TRACK STATION	LEFT & RIGHT RAIL
STA. 15+50.00	800.849
STA. 16+00.00	800.173
STA. 16+50.00	799.538

TABLE OF ANGLES	
No.	ANGLE
1	61°03'44"
2	63°28'25"
3	67°06'31"
4	69°08'51"

ANGLES ARE TANGENT TO CURVE

**HORIZONTAL CURVE DATA**

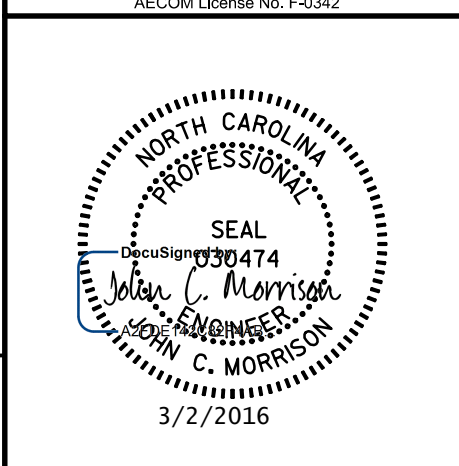
-Y-	-RR-	-Y-
PI STA. 15+84.89	PIs STA. 17+60.13	PI STA. 19+71.51
$\Delta = 19^\circ 45' 58.9''$ (LT.)	$\theta_s = 6^\circ 55' 51.4''$	$\Delta = 10^\circ 16' 46.3''$ (LT.)
D = 3°57'05.2"	Ls = 300.00'	D = 4°37'14.3"
L = 500.23'	LT = 200.15'	L = 222.47'
T = 252.63'	ST = 100.14'	T = 111.53'
R = 1,450.00'		R = 1,240.00'
SE = 0.03		



**PLAN**

(PILES NOT SHOWN IN PLAN VIEW FOR CLARITY)

PROJECT NO. U-2707  
 FORSYTH COUNTY  
 STATION: 17+34.88 -Y-  
 SHEET 1 OF 4 BRIDGE NO. 109 MILEPOST #10.98



STATE OF NORTH CAROLINA  
 DEPARTMENT OF TRANSPORTATION  
 RALEIGH

**GENERAL DRAWING**  
 FOR BRIDGE ON SR 2999  
 (HAMPTON ROAD) OVER  
 NORFOLK SOUTHERN RAILROAD  
 BETWEEN US 158 AND SR 3104

REVISIONS						SHEET NO. <b>S-43</b>
NO.	BY:	DATE:	NO.	BY:	DATE:	
1			3			TOTAL SHEETS <b>86</b>
2			4			

DOCUMENT NOT CONSIDERED  
 FINAL UNLESS ALL  
 SIGNATURES COMPLETED

DRAWN BY: KHC DATE: 10/2015  
 CHECKED BY: JCM DATE: 10/2015

DATE: 3/2/2016 TIME: 6:55:21 AM  
 USER: \\sfr\p000\ncasomes\com\p000\leas\60462161400\_Technical\400\_NC\DOT\_Shd\_Tech\_Design\_Files\Structures\Bridges\_109\Cad\402\_001\_U2707\_SML\_S43\_GDD.dgn