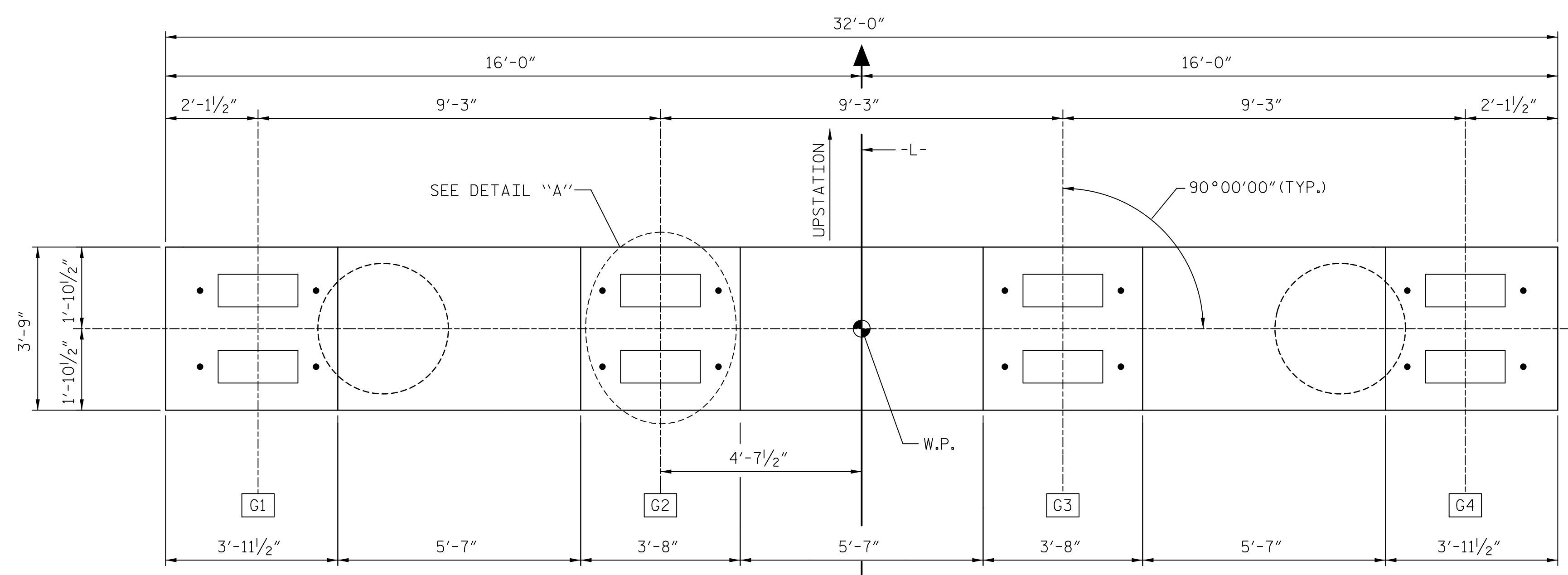
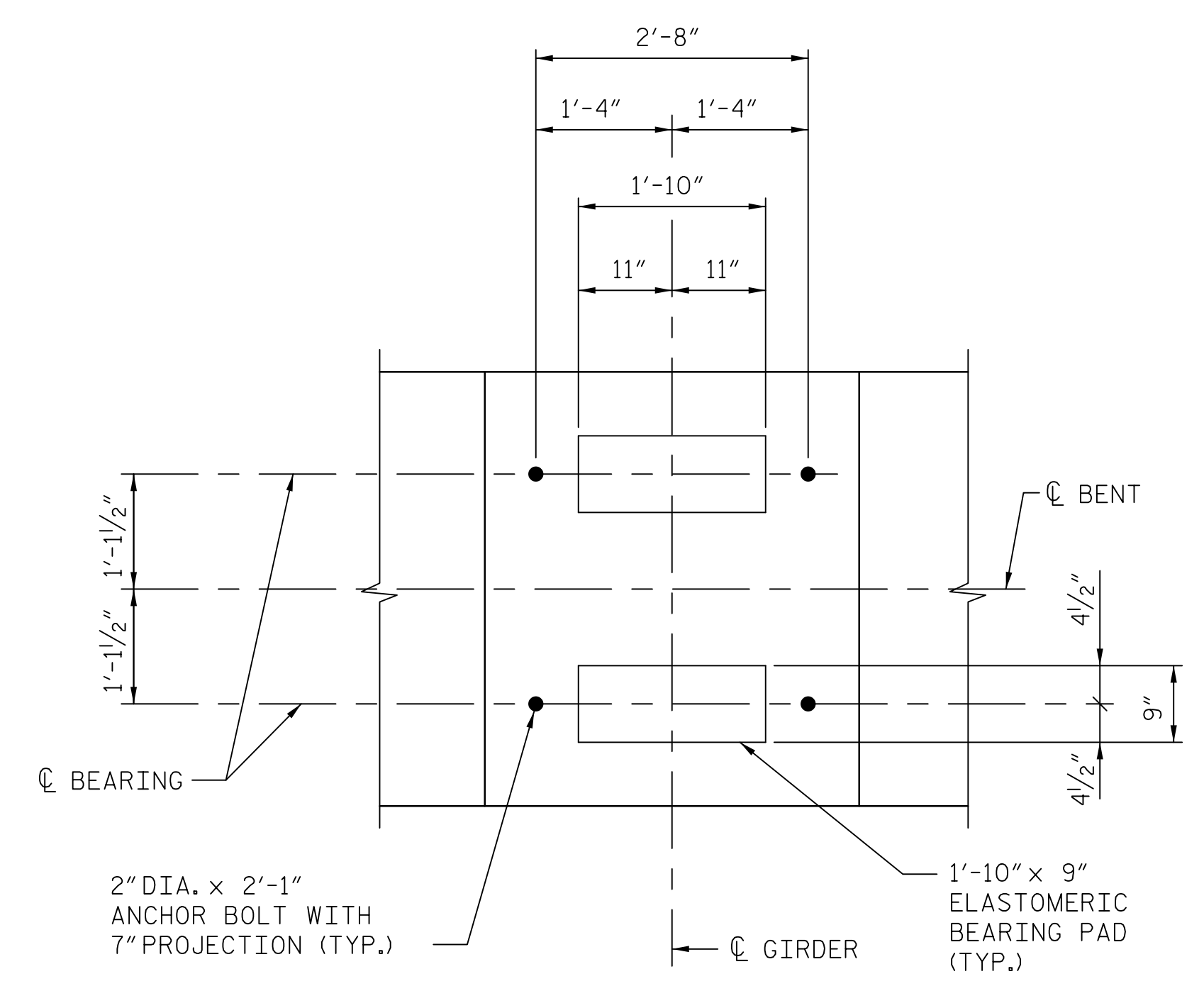


NOTES:
 STIRRUPS IN CAP MAY BE SHIFTED AS NECESSARY TO CLEAR ANCHOR BOLTS.
 HOOKS ON "V" BARS MAY BE TURNED AS NECESSARY FOR PLACING REINFORCING STEEL.
 ALL STEEL IN THE DRILLED PIERS IS INCLUDED IN THE PAY ITEMS FOR "REINFORCING STEEL" AND "SPIRAL COLUMN REINFORCEMENT STEEL".
 THE CONTRACTOR'S ATTENTION IS CALLED TO THE FACT THAT THE LONGITUDINAL REINFORCEMENT FOR THE DRILLED PIERS IS DETAILED WITH 3 FEET OF EXTRA LENGTH.
 SPLICING OF THE LONGITUDINAL BARS IN THE DRILLED PIERS WILL NOT BE PERMITTED.
 THE LOCATION OF THE CONSTRUCTION JOINT IN THE DRILLED PIERS IS BASED ON AN APPROXIMATE GROUND LINE ELEVATION. IF THE CONSTRUCTION JOINT IS ABOVE THE ACTUAL GROUND ELEVATION, THE CONTRACTOR SHALL PLACE THE CONSTRUCTION JOINT ONE FOOT BELOW THE GROUND LINE.

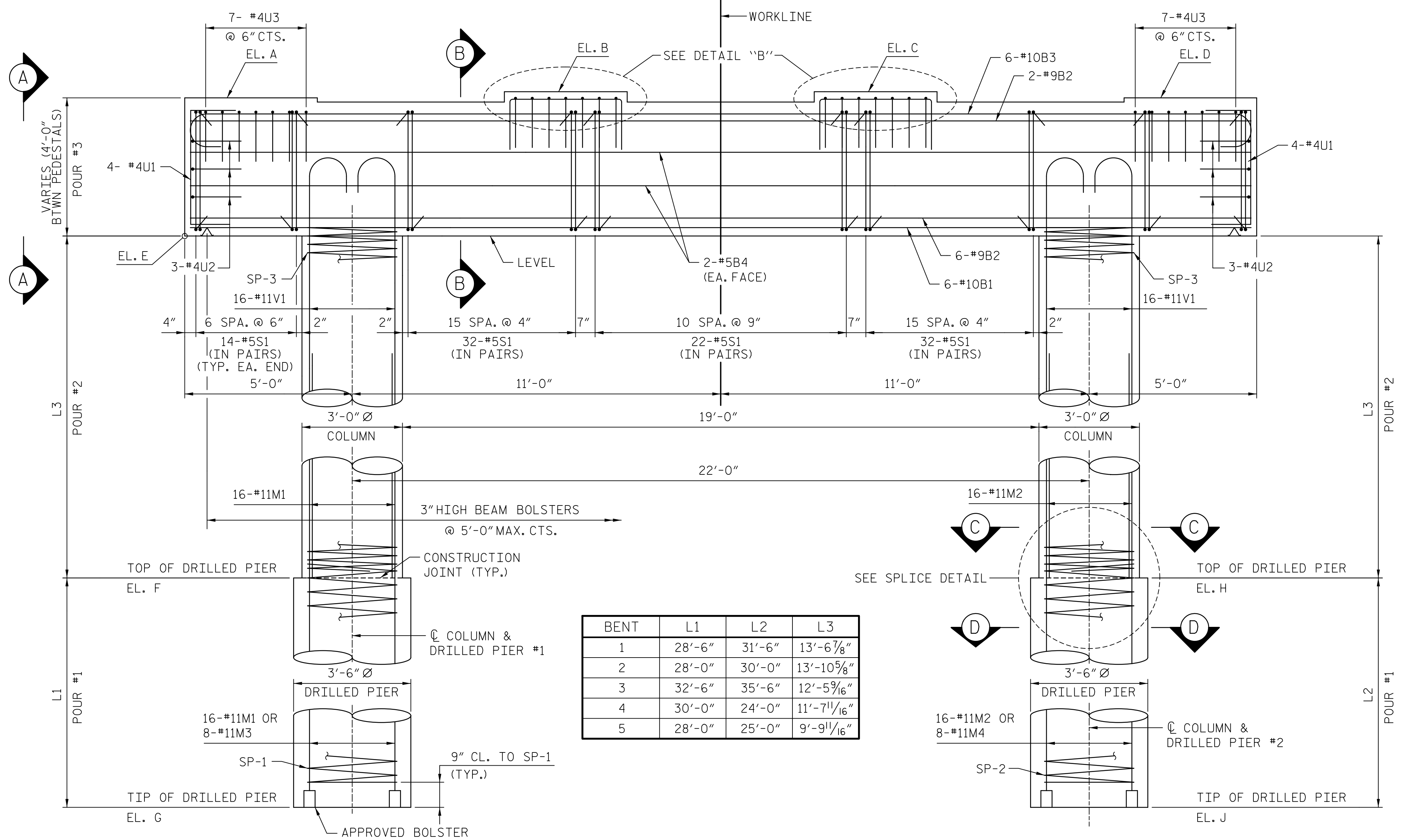


PLAN



DETAIL "A"

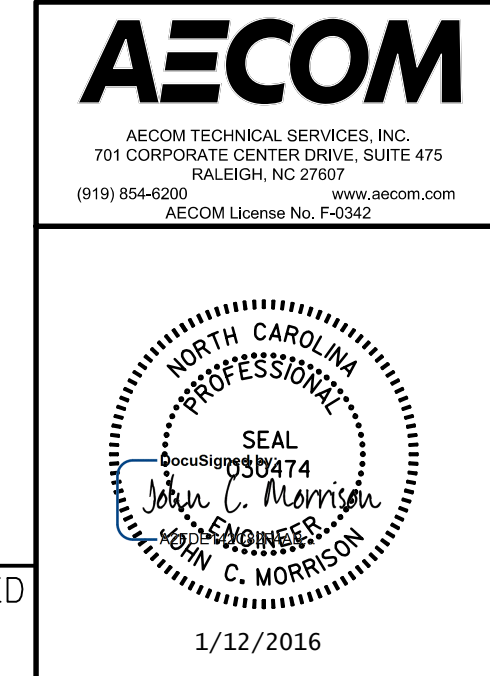
ELEVATIONS									
BENT	EL. A	EL. B	EL. C	EL. D	EL. E	EL. F	EL. G	EL. H	EL. J
1	705.10	705.28	705.28	705.10	700.97	687.40	658.90	687.40	655.90
2	705.41	705.60	705.60	705.41	701.29	687.40	659.40	687.40	657.40
3	705.89	706.07	706.07	705.89	701.76	689.30	656.80	689.30	653.80
4	706.36	706.55	706.55	706.36	702.24	690.60	660.60	690.60	666.60
5	706.73	706.92	706.92	706.73	702.61	692.80	664.80	692.80	667.80



ELEVATION

BENT	L1	L2	L3
1	28'-6"	31'-6"	13'-6 7/8"
2	28'-0"	30'-0"	13'-10 5/8"
3	32'-6"	35'-6"	12'-5 9/16"
4	30'-0"	24'-0"	11'-7 11/16"
5	28'-0"	25'-0"	9'-9 11/16"

PROJECT NO. U-2707
 FORSYTH COUNTY
 STATION: 90+25.00 -L-
 SHEET 1 OF 3 BRIDGE NO. 656



REVISIONS						SHEET NO.	
NO.	BY:	DATE:	NO.	BY:	DATE:	S-34	
						TOTAL SHEETS	
						86	

DOCUMENT NOT CONSIDERED FINAL UNLESS ALL SIGNATURES COMPLETED

DATE: 1/12/2016
 TIME: 9:25:50 AM

USER: kmc...
 DGN: R:\Bridge\656\Card\40_L07_U2707_SML_S34_BTO.dgn

DRAWN BY: KHC DATE: 11/2015
 CHECKED BY: JCM DATE: 11/2015