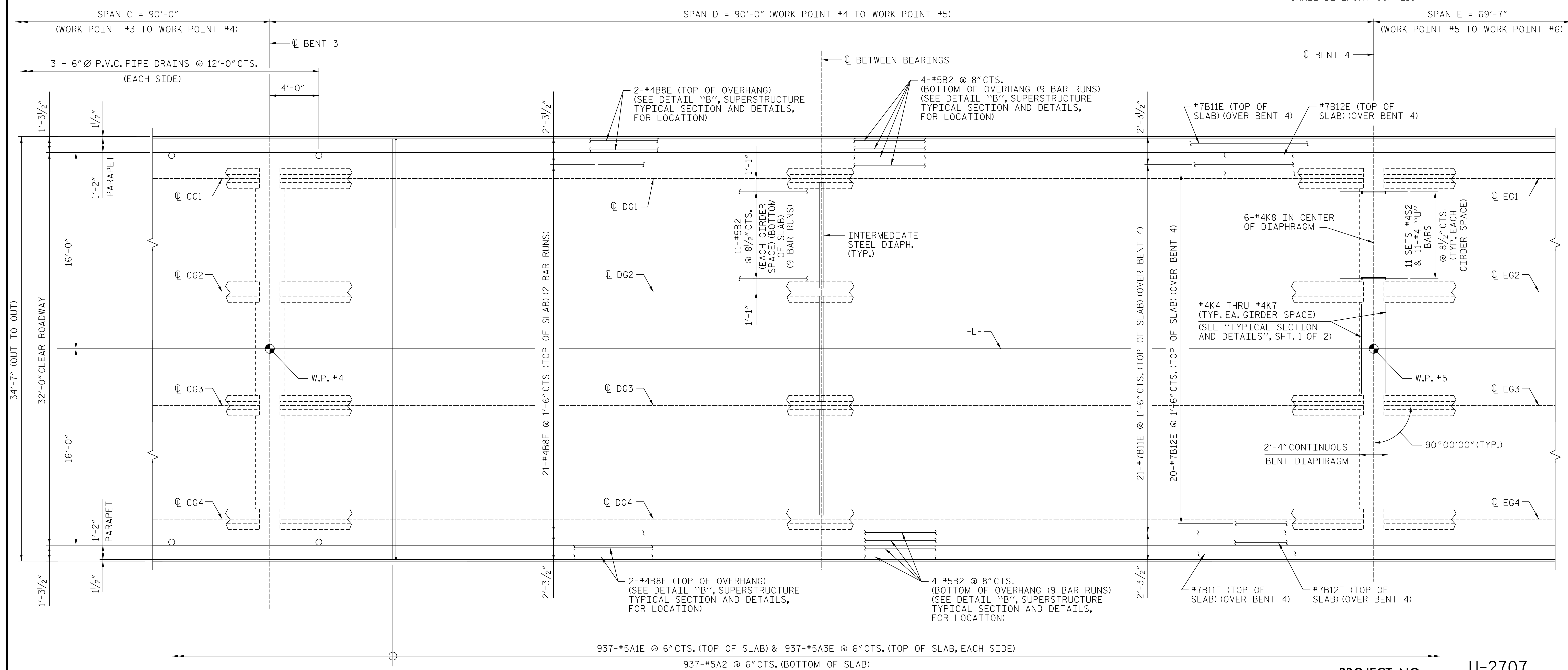


NOTES:

FOR CONCRETE PARAPET RAIL REINFORCING STEEL THAT MUST BE CAST IN DECK SLAB, SEE "CONCRETE PARAPET RAIL" SHEET.

FOR SECTION "B-B", SEE "SUPERSTRUCTURE TYPICAL SECTION AND DETAILS" SHEET.

ANY INCIDENTAL REINFORCING USED IN THE DECK SHALL BE EPOXY COATED.



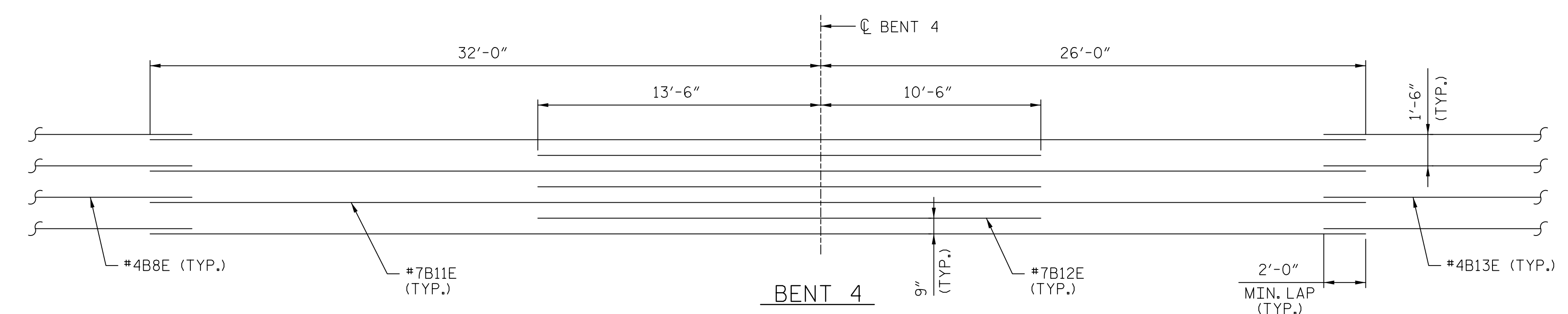
PLAN OF SPAN D AND PARTIAL PLAN OF SPANS C & E

PROJECT NO. U-2707

FORSYTH COUNTY

STATION: 90+25.00 -L-

SHEET 4 OF 6 BRIDGE NO. 656



TOP OF SLAB REINFORCEMENT LAYOUT

**AECOM**

AECOM TECHNICAL SERVICES, INC.  
701 CORPORATE CENTER DRIVE, SUITE 475  
RALEIGH, NC 27607  
(919) 854-6200 www.aecom.com  
AECOM License No. F-0342

SEAL  
NORTH CAROLINA PROFESSIONAL ENGINEER  
John C. Morrison  
11/12/2016

STATE OF NORTH CAROLINA  
DEPARTMENT OF TRANSPORTATION  
RALEIGH

SUPERSTRUCTURE  
PLAN OF SPAN D  
AND PARTIAL PLAN  
OF SPANS C & E

REVISIONS					
NO.	BY:	DATE:	NO.	BY:	DATE:

SHEET NO. S-10  
TOTAL SHEETS 86

DOCUMENT NOT CONSIDERED FINAL UNLESS ALL SIGNATURES COMPLETED

DATE: 11/12/2015 TIME: 9:54:24 AM  
USER: R:\projects\656\656.dwg\40\_019\_U2707\_SML\_S10\_P504.dgn

DRAWN BY: MKT DATE: 11/2015  
CHECKED BY: JCM DATE: 11/2015