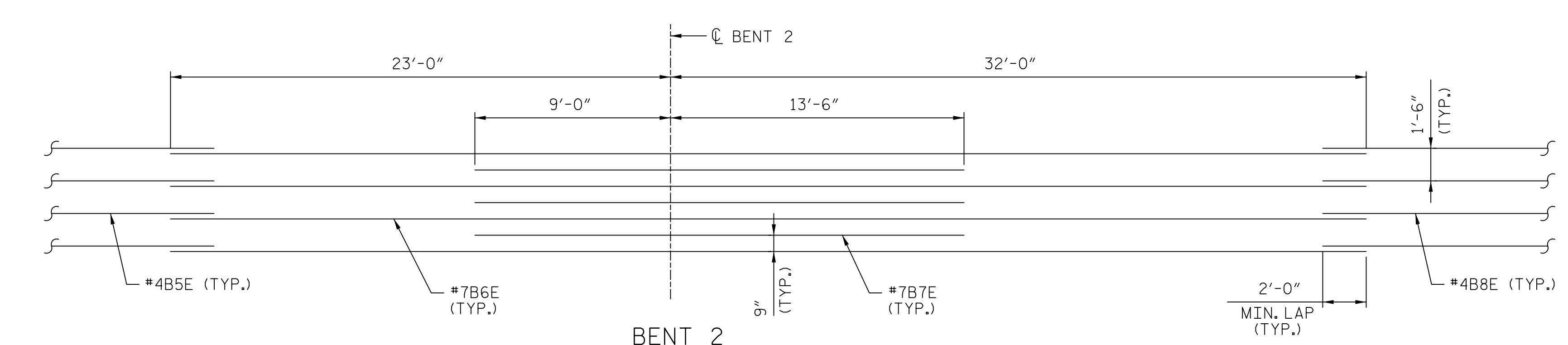


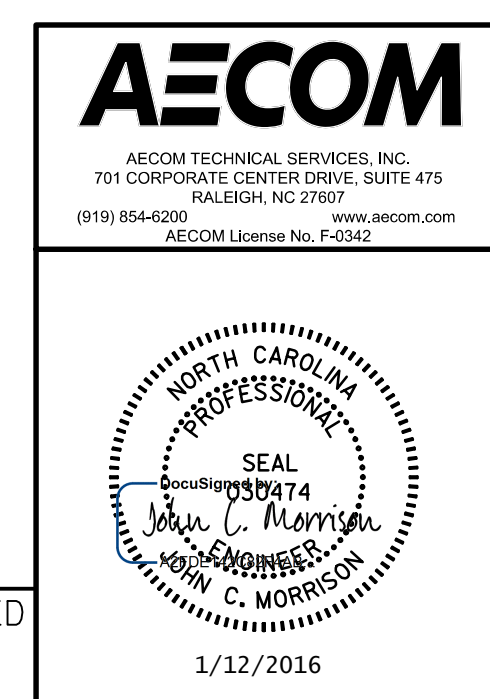
NOTES:
 FOR CONCRETE PARAPET RAIL REINFORCING STEEL THAT MUST BE CAST IN DECK SLAB, SEE "CONCRETE PARAPET RAIL" SHEET.
 FOR SECTION "B-B", SEE "SUPERSTRUCTURE TYPICAL SECTION AND DETAILS" SHEET.
 ANY INCIDENTAL REINFORCING USED IN THE DECK SHALL BE EPOXY COATED.

PLAN OF SPAN B AND PARTIAL PLAN OF SPANS A & C

PROJECT NO. U-2707
 FORSYTH COUNTY
 STATION: 90+25.00 -L-
 SHEET 2 OF 6 BRIDGE NO. 656



TOP OF SLAB REINFORCEMENT LAYOUT



STATE OF NORTH CAROLINA
 DEPARTMENT OF TRANSPORTATION
 RALEIGH

SUPERSTRUCTURE
 PLAN OF SPAN B
 AND PARTIAL PLAN
 OF SPANS A & C

REVISIONS					
NO.	BY:	DATE:	NO.	BY:	DATE:

SHEET NO. **S-08**
 TOTAL SHEETS **86**

DOCUMENT NOT CONSIDERED
 FINAL UNLESS ALL
 SIGNATURES COMPLETED

DATE: 1/12/2016
 TIME: 9:54:48 AM
 USER: \\gis\apc\pdp\656\card\401015\U2707_SML_508_P502.dgn
 DGN: R:\EIT\pdp\656\card\401015\U2707_SML_508_P502.dgn

DRAWN BY: MKT DATE: 11/2015
 CHECKED BY: JCM DATE: 11/2015