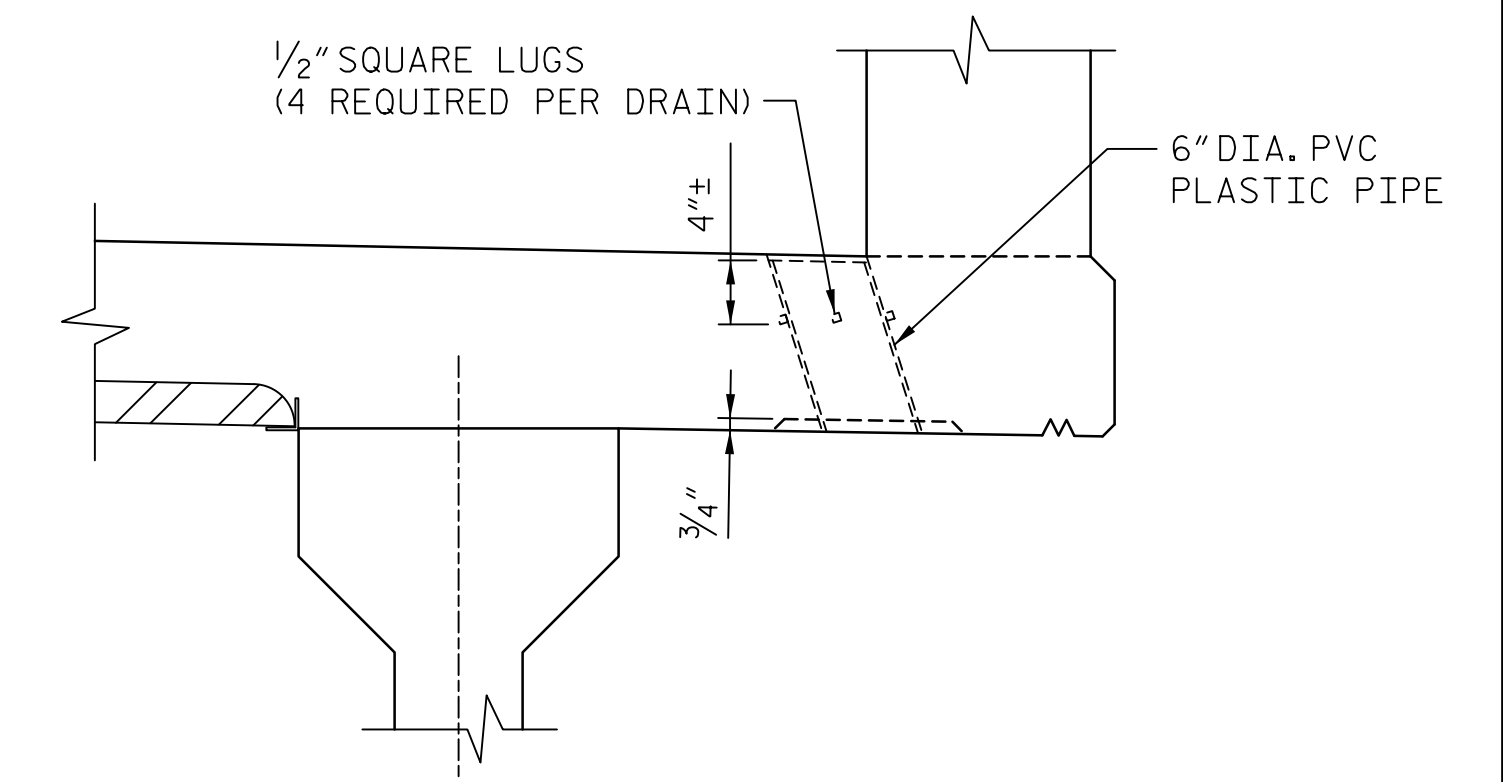


**TYPICAL HALF SECTION**  
(SHOWING END BENT DIAPHRAGMS)

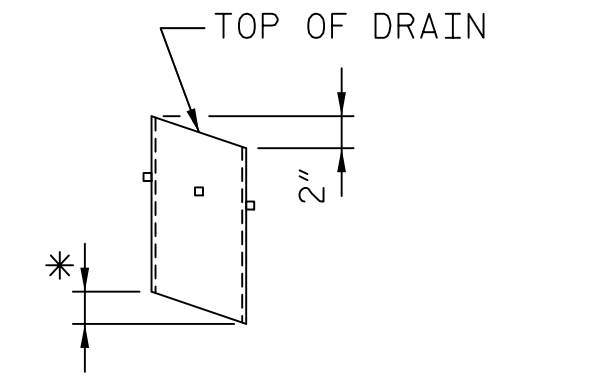
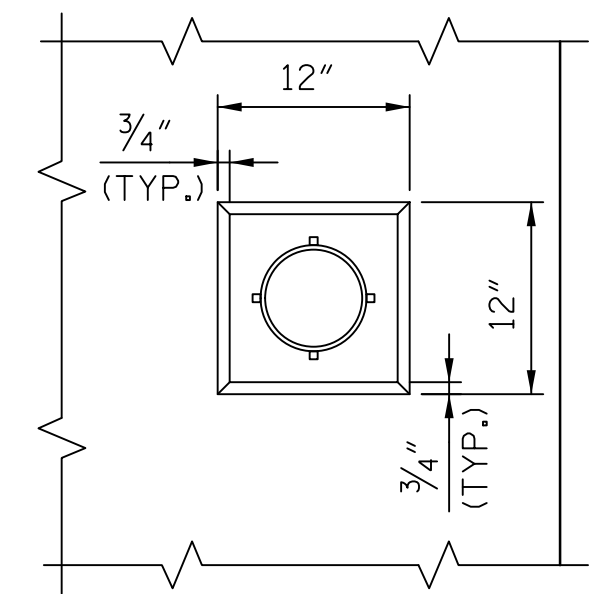
**TYPICAL HALF SECTION**  
(SHOWING CONTINUOUS FOR LIVE LOAD DIAPHRAGMS)

**TYPICAL SECTION**

**NOTES:**  
 PROVIDE 1/4" HIGH BEAM BOLSTERS UPPER AT 4'-0" CTS. ATOP THE STAY-IN-PLACE METAL FORMS TO SUPPORT THE BOTTOM MAT OF "A" BARS. WHEN USING REMOVABLE FORMS, PROVIDE CONTINUOUS HIGH CHAIRS FOR METAL DECK (C.H.C.M.) AT 4'-0" CTS. WITH A HEIGHT TO SUPPORT THE BOTTOM MAT OF "A" BARS A CLEAR DISTANCE OF 2 1/2" ABOVE THE TOP OF THE REMOVABLE FORM.  
 LONGITUDINAL STEEL MAY BE SHIFTED SLIGHTLY, AS NECESSARY, TO AVOID INTERFERENCE WITH STIRRUPS IN PRESTRESSED CONCRETE GIRDERS.  
 FOR SECTION AT INTERMEDIATE DIAPHRAGMS, SEE "INTERMEDIATE STEEL DIAPHRAGMS FOR TYPE II, III, & IV PRESTRESSED CONCRETE GIRDERS".



**ELEVATION**



**PLAN OF RECESS**

**PIPE DETAIL**

**DRAIN NOTES:**  
 TOP OF FLOOR DRAIN TO BE SET 3/8" BELOW SURFACE OF SLAB.  
 4- 1/2" SQUARE LUGS TO BE GLUED TO THE PVC PLASTIC PIPE AT EQUAL SPACES AROUND THE PIPE DRAIN APPROXIMATELY 4" FROM THE TOP OF THE PIPE.  
 THE 6" DIA. PVC PLASTIC PIPE AND FITTINGS SHALL BE SCHEDULE 40 AND CONFORM TO ASTM D1785.

**DRAIN DETAILS**

**PROJECT NO. U-2707**  
**FORSYTH COUNTY**  
**STATION: 90+25.00 -L-**  
 SHEET 1 OF 2 BRIDGE NO. 656

**AECOM**  
 AECOM TECHNICAL SERVICES, INC.  
 701 CORPORATE CENTER DRIVE, SUITE 475  
 RALEIGH, NC 27607  
 (919) 854-6200 www.aecom.com  
 AECOM License No. F-0342

SEAL  
 NORTH CAROLINA PROFESSIONAL ENGINEER  
 JOHN C. MORRISON  
 11/12/2016

STATE OF NORTH CAROLINA DEPARTMENT OF TRANSPORTATION RALEIGH					
<b>SUPERSTRUCTURE TYPICAL SECTION AND DETAILS</b>					
SHEET NO. S-05					
TOTAL SHEETS 86					
REVISIONS					
NO.	BY:	DATE:	NO.	BY:	DATE:

DOCUMENT NOT CONSIDERED FINAL UNLESS ALL SIGNATURES COMPLETED

DRAWN BY: MKT DATE: 11/2015  
 CHECKED BY: JCM DATE: 11/2015

DATE: 11/12/2016 TIME: 9:54:05 AM  
 USER: jcm\jcm.dgn  
 DGN: R:\EIT\Proj\656\Card\40\_009\_U2707\_SML\_S05\_T50.dgn