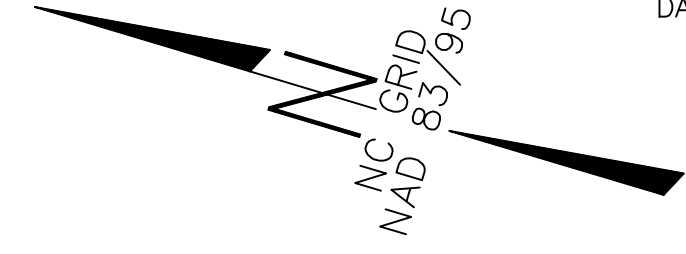
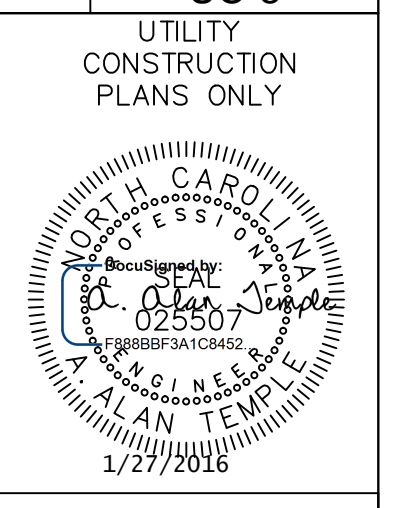


8/17/99

PROJECT REFERENCE NO.	SHEET NO.
U-2707	UC-5

CITY OF WINSTON-SALEM
 PERMIT NUMBER
 WATER 2734
 SEWER
 DATE 12/15/15



-Y-
 PI Sta 24+77.65 PI Sta 20+52.02
 = 18° 15' 54.9" (R#) 13° 30' 00.2" (LT)
 D = 6° 01' 52.1" D = 6° 01' 52.1"
 L = 302.85' L = 223.84'
 T = 152.72' T = 112.44'
 R = 950.00' R = 950.00'
 SE = 0.04 SE = 0.04

POT 12+90.56 -Y3-
 END CONSTRUCTION
 POT Sta. 12+60.00
 -Y3-

END CONSTRUCTION
 POC Sta. 25+30.00 -Y-

THOMAS M. DOWD
 MICHAEL DOWD
 DB 1307 PG 214

33
 DUKE POWER COMPANY
 DB 851 PG 332

WELLINGTON ASSOCIATES, LLC
 DB 2127 PG 3342

MARGARET E. HEATH
 DB 3156 PG 1635
 73-E-111

ATLANTIS FOODS HOLDINGS, LLC
 DB 3098 PG 3605
 DB 2827 PG 2735

PT Sta. 21+63.42

PT Sta. 26+27.78

END RESURFACING
 POC Sta. 25+02.69 -Y-

FRISBY ACQUISITION CORPORATION
 DB 1987 PG 2388 PC Sta. 23+24.93

VERNON L. MOORE
 88-E-1763
 DB 1143 PG 915

ROBERT L. THOMPSON
 AND WIFE
 BILLIE THOMPSON
 DB 1108 PG 683
 PB 38 PG 165

NOTE: NEW ENTRANCE MUST BE CONSTRUCTED BEFORE
 OBSTRUCTING THE EXISTING TRUCK ENTRANCE IN ANY
 WAY.

45° BENDS
 STA. 7+14.28 WL-1
 STA. 7+21.19 WL-1
 DI RESTRAINED JOINT PIPE
 PC350 OPEN CUT
 STA. 2+10.11 TO
 STA. 6+35.11 WL-1
 POT Sta. 10+00.00
 ΔY3-
 = 75°33'54.76"

MATCH LINE -Y- STA 19+50
 SEE SHEET UC-4

REVISIONS

STIMESON

EUNICE E. COPE
 AND HUSBAND
 WALTER L. COPE, JR.
 DB 1858 PG 2099

9347
 16" D.I. WATER MAIN
 RELOCATION - PROJECT 74347
 SEE SHEET UC-7 FOR WATERLINE PROFILE