

CITY OF WINSTON-SALEM  
PERMIT NUMBER 2734  
WATER  
SEWER  
DATE 12/15/15

-L-

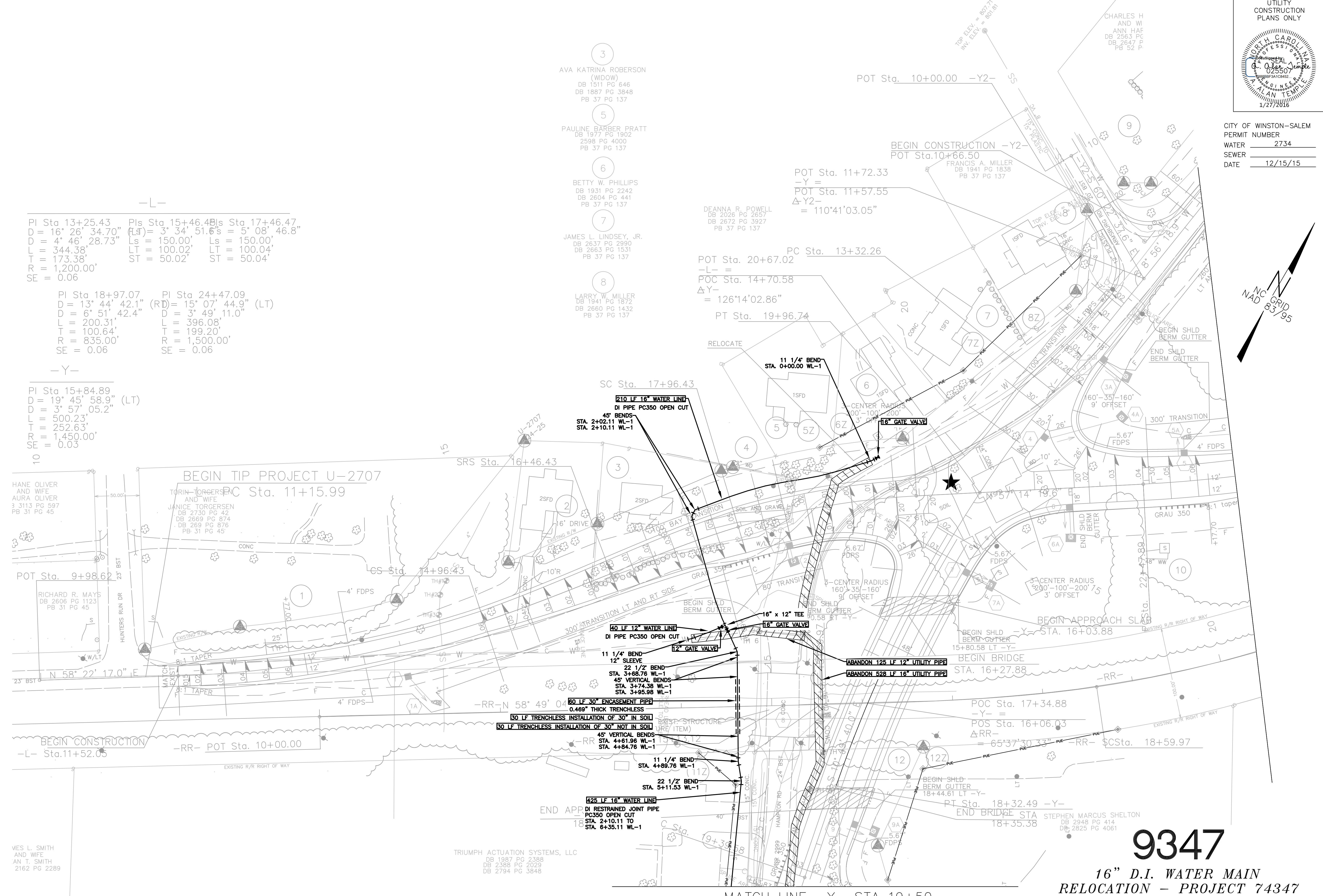
PI Sta 13+25.43 PIs Sta 15+46.43 S Sta 17+46.47  
 D = 16' 26' 34.70" (LS) = 3' 34' 51.6" S = 5' 08' 46.8"  
 D = 4' 46' 28.73" Ls = 150.00' Ls = 150.00'  
 L = 344.38' LT = 100.02' LT = 100.04'  
 T = 173.38' ST = 50.02' ST = 50.04'  
 R = 1,200.00'  
 SE = 0.06

PI Sta 18+97.07 PI Sta 24+47.09  
 D = 13' 44' 42.1" (RD) = 15' 07' 44.9" (LT)  
 D = 6' 51' 42.4" D = 3' 49' 11.0"  
 L = 200.31' L = 396.08'  
 T = 100.64' T = 199.20'  
 R = 835.00' R = 1,500.00'  
 SE = 0.06 SE = 0.06

-Y-

PI Sta 15+84.89  
 D = 19' 45' 58.9" (LT)  
 D = 3' 57' 05.2"  
 L = 500.23'  
 T = 252.63'  
 R = 1,450.00'  
 SE = 0.03

- 3  
AVA KATRINA ROBERSON  
(WIDOW)  
DB 1511 PG 646  
DB 1887 PG 3848  
PB 37 PG 137
- 5  
PAULINE BARBER PRATT  
DB 1977 PG 1902  
2598 PG 4000  
PB 37 PG 137
- 6  
BETTY W. PHILLIPS  
DB 1931 PG 2242  
DB 2604 PG 441  
PB 37 PG 137
- 7  
JAMES L. LINDSEY, JR.  
DB 2637 PG 2990  
DB 2663 PG 1531  
PB 37 PG 137
- 8  
LARRY W. MILLER  
DB 1941 PG 1872  
DB 2660 PG 1432  
PB 37 PG 137



REVISIONS

CONSTRUCTION NOTES

VES L. SMITH  
AND WIFE  
AN T. SMITH  
2162 PG 2289

TRIUMPH ACTUATION SYSTEMS, LLC  
DB 1987 PG 2388  
DB 2388 PG 2029  
DB 2794 PG 3848

STEPHEN MARCUS SHELTON  
DB 2948 PG 414  
DB 2825 PG 4061

9347

16" D.I. WATER MAIN  
RELOCATION - PROJECT 74347  
SEE SHEET UC-7 FOR WATERLINE PROFILE

MATCH LINE -Y- STA 19+50  
SEE SHEET UC-5