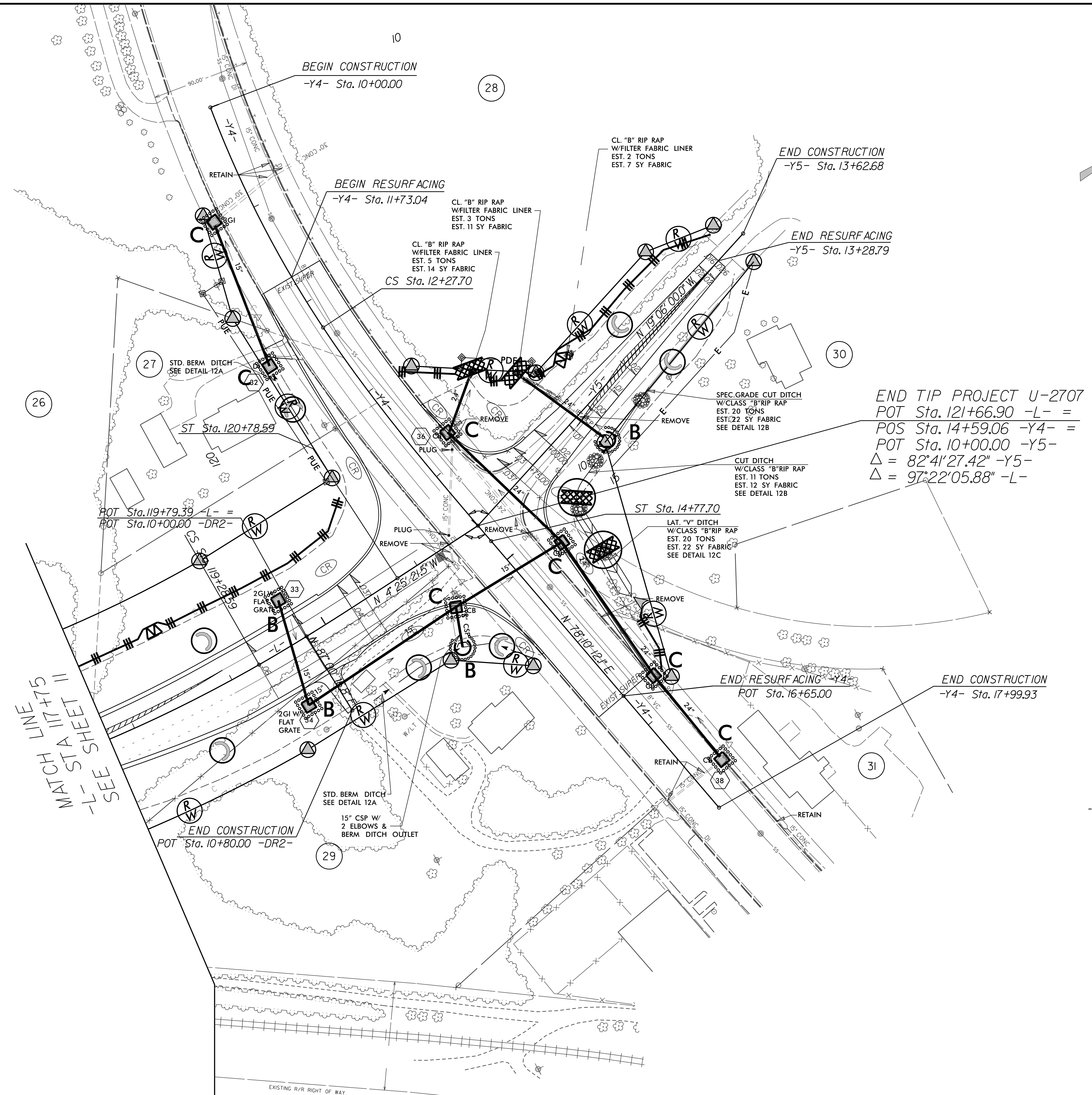
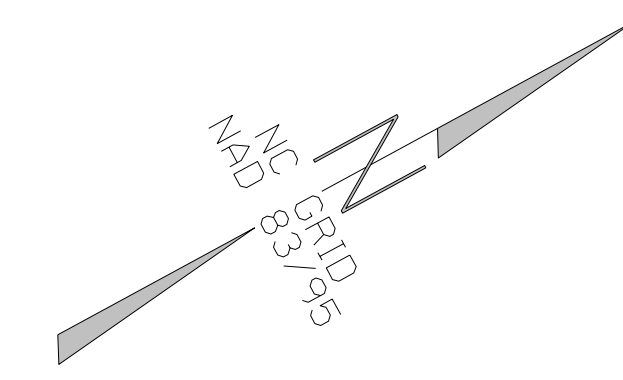


| | |
|--|---------------------|
| PROJECT REFERENCE NO. | SHEET NO. |
| U-2707 | EC-22/CONST.12 |
| RW SHEET NO. | |
| ROADWAY DESIGN ENGINEER | HYDRAULICS ENGINEER |
| PRELIMINARY PLANS DO NOT USE FOR CONSTRUCTION | |

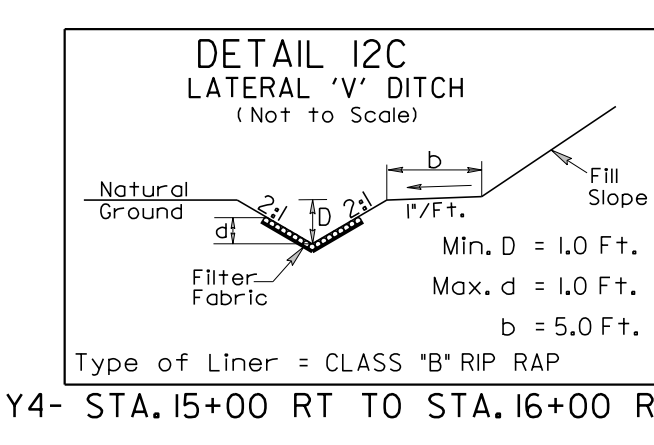


-Y4-

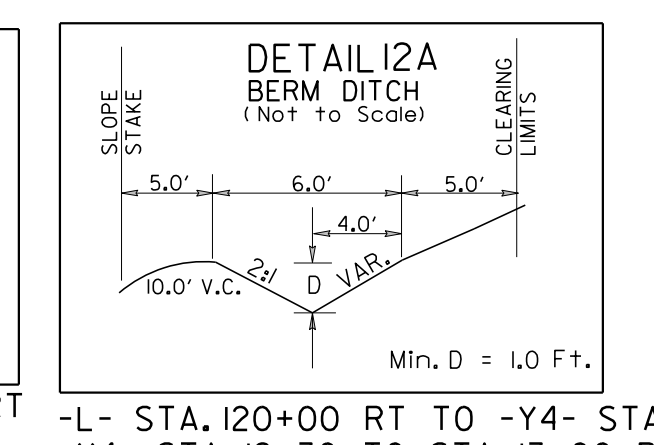
| | |
|-------------------------------------|---------------------------------|
| PI Sta 11+14.33 | PIs Sta 13+11.5 |
| $\Delta = 12^\circ 47' 26.0''$ (LT) | $\Theta_s = 7^\circ 01' 17.5''$ |
| D = 5' 37.02.0' | Ls = 250.00' |
| L = 227.70 | LT = 166.80' |
| T = 114.33' | ST = 83.45' |
| R = 1,020.00' | SE = EXIST. |
| SE = EXIST. | |

-L-

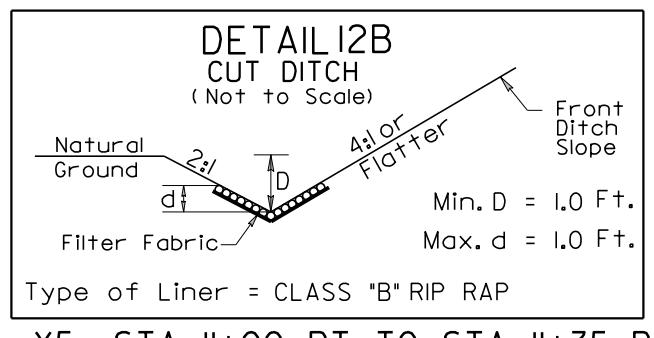
| | |
|-------------------------------------|---------------------------------|
| PI Sta 115+08.96 | PIs Sta 119+78.60 |
| $\Delta = 38^\circ 01' 36.1''$ (LT) | $\Theta_s = 3^\circ 16' 04.1''$ |
| D = 4' 21' 25.5" | Ls = 150.00' |
| L = 872.75 | LT = 100.02' |
| T = 453.13' | ST = 50.01' |
| R = 1,315.00' | |
| SE = 0.06 | |



-Y4- STA. 15+00 RT TO STA. 16+00 RT



-L- STA. 120+00 RT TO -Y4- STA. 15+85 RT
-Y4- STA. 12+30 TO STA. 13+00 RT



-Y5- STA. 11+00 RT TO STA. 11+35 RT
-Y5- STA. 11+35 RT TO STA. 12+00 RT

INSTALL MATTING FOR
EROSION CONTROL IN ALL
PROPOSED DITCH LINES.

REVISIONS

MATCH LINE
-L- STA 117+75
SEE SHEET 11