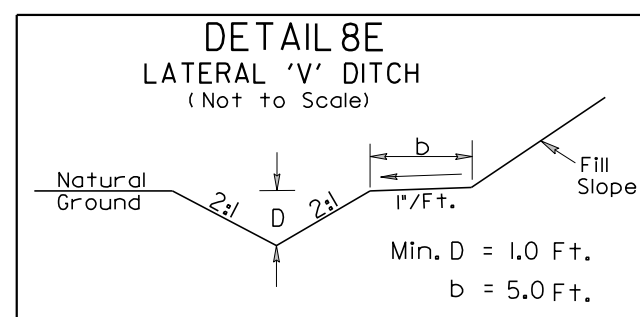
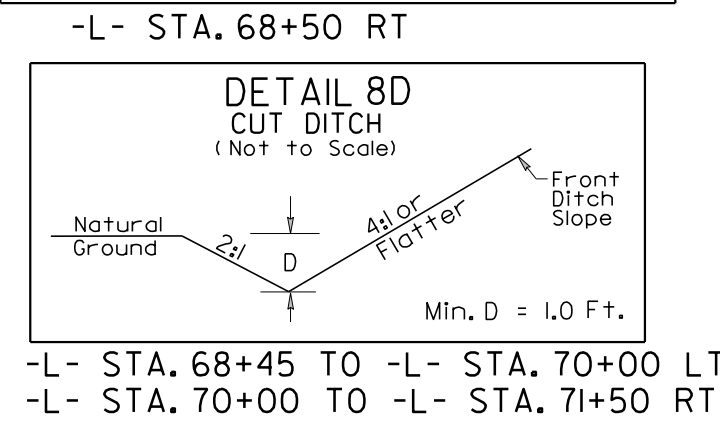
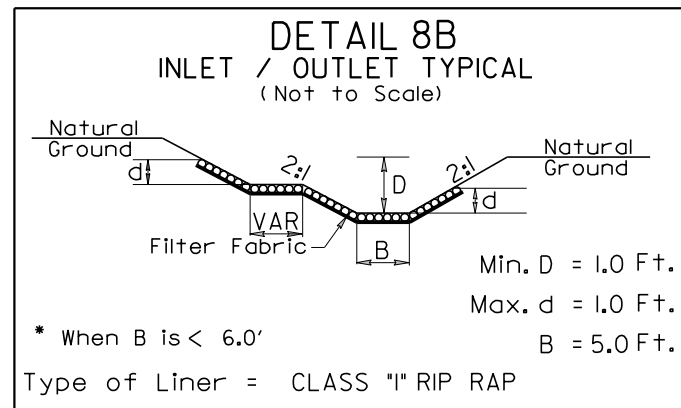
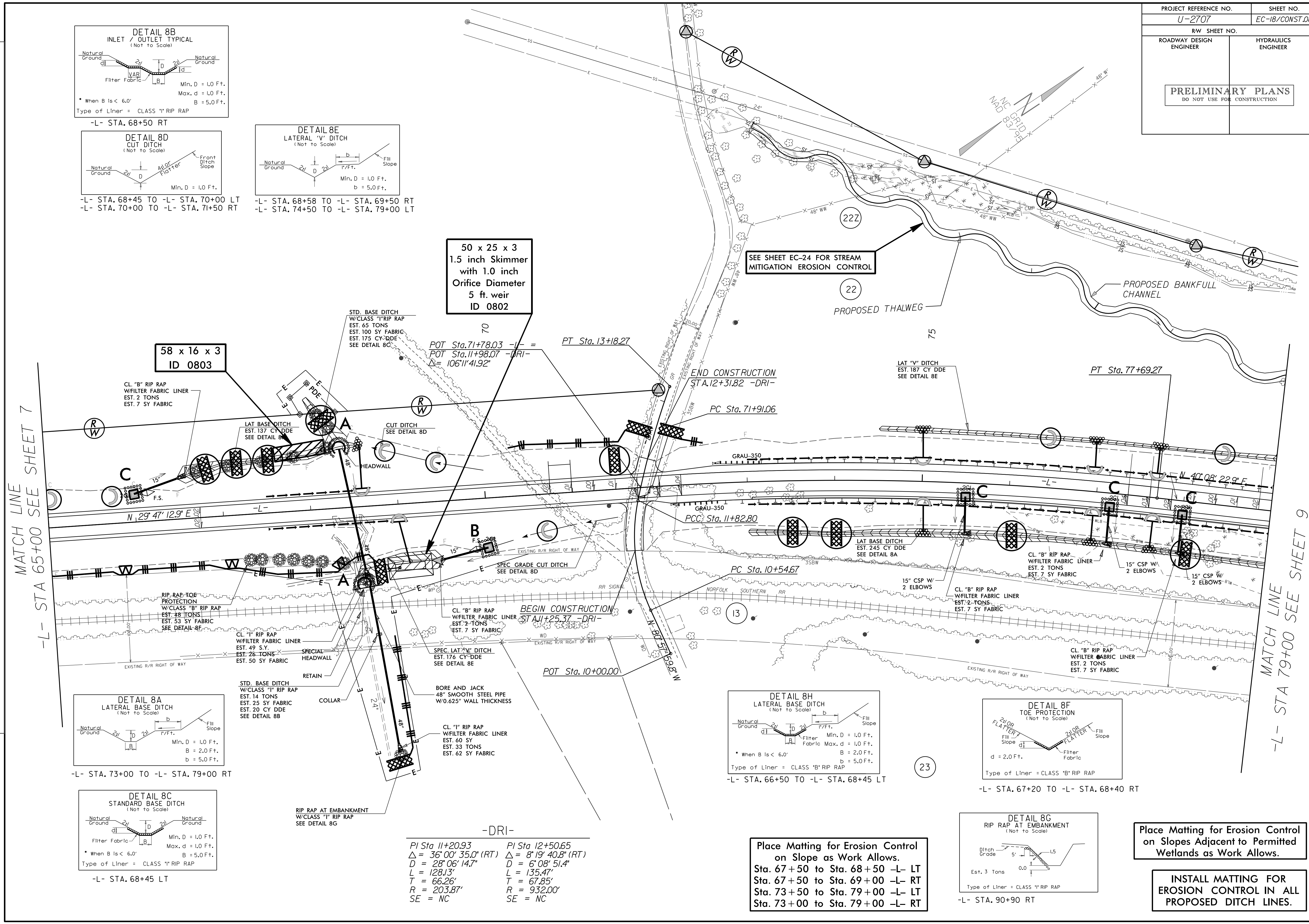


PROJECT REFERENCE NO.	SHEET NO.
U-2707	EC-18/CONST.08
RW SHEET NO.	
ROADWAY DESIGN ENGINEER	HYDRAULICS ENGINEER
<b>PRELIMINARY PLANS</b> DO NOT USE FOR CONSTRUCTION	



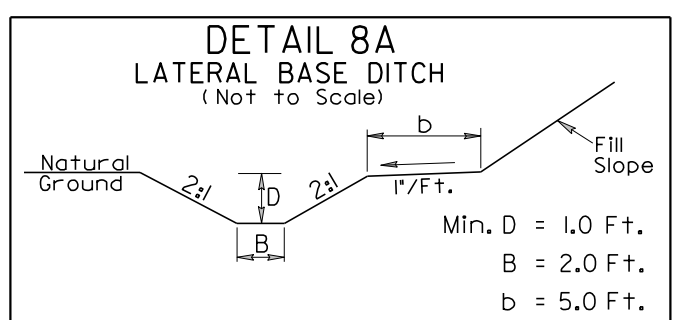
-L- STA. 68+58 TO -L- STA. 69+50 RT  
-L- STA. 74+50 TO -L- STA. 79+00 LT

-L- STA. 68+45 TO -L- STA. 70+00 LT  
-L- STA. 70+00 TO -L- STA. 71+50 RT

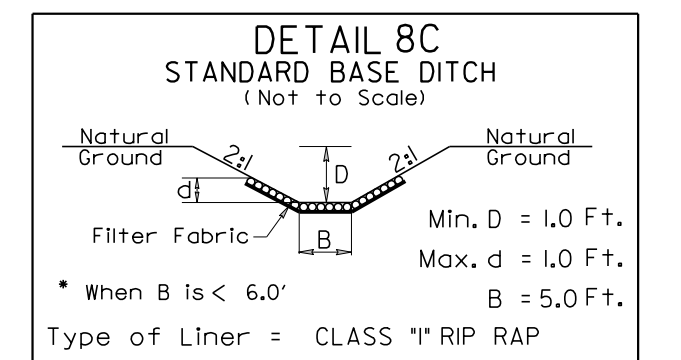


MATCH LINE  
-L- STA 65+00 SEE SHEET 7

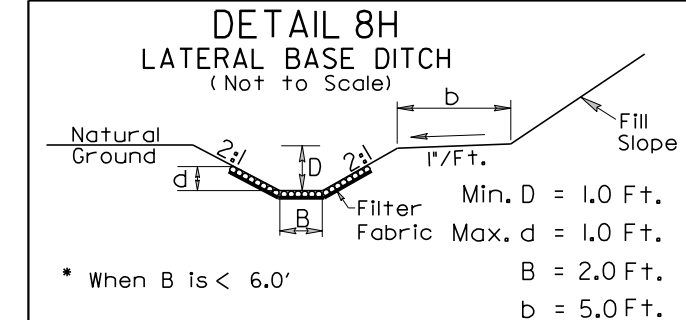
MATCH LINE  
-L- STA 79+00 SEE SHEET 9



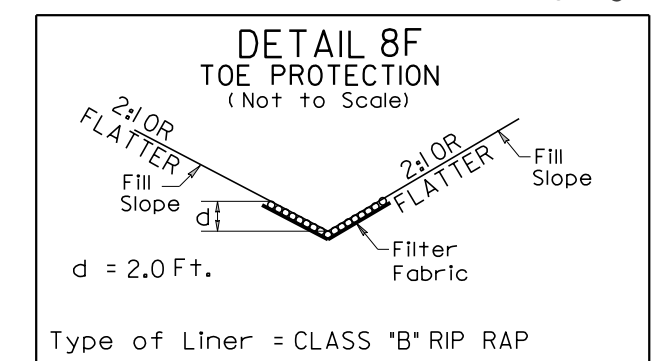
-L- STA. 73+00 TO -L- STA. 79+00 RT



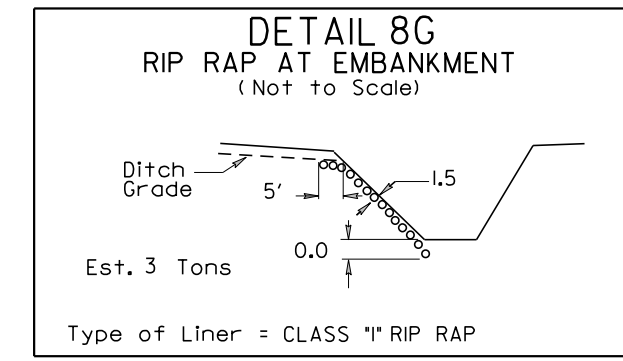
-L- STA. 68+45 LT



-L- STA. 66+50 TO -L- STA. 68+45 LT



-L- STA. 67+20 TO -L- STA. 68+40 RT



-L- STA. 90+90 RT

-DRI-  
 PI Sta 11+20.93 Δ = 36° 00' 35.0" (RT) D = 28° 06' 14.7" L = 128.13' T = 66.26' R = 203.87' SE = NC  
 PI Sta 12+50.65 Δ = 8° 19' 40.8" (RT) D = 6° 08' 51.4" L = 135.47' T = 67.85' R = 932.00' SE = NC

**Place Matting for Erosion Control on Slope as Work Allows.**  
 Sta. 67+50 to Sta. 68+50 -L- LT  
 Sta. 67+50 to Sta. 69+00 -L- RT  
 Sta. 73+50 to Sta. 79+00 -L- LT  
 Sta. 73+00 to Sta. 79+00 -L- RT

**Place Matting for Erosion Control on Slopes Adjacent to Permitted Wetlands as Work Allows.**

**INSTALL MATTING FOR EROSION CONTROL IN ALL PROPOSED DITCH LINES.**

REVISIONS