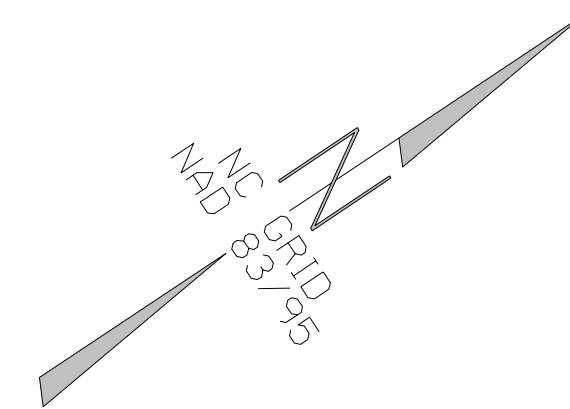
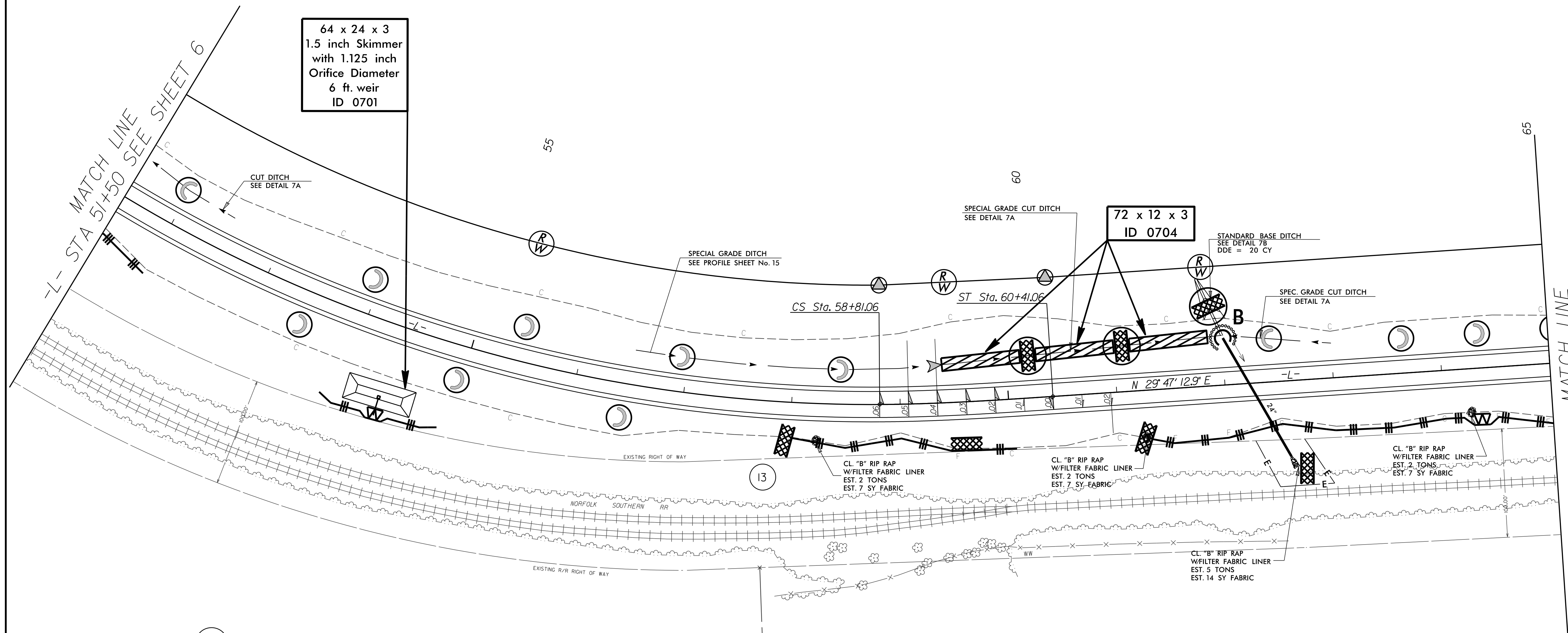


PROJECT REFERENCE NO. U-2707	SHEET NO. EC-17/CONST.07
RW SHEET NO.	
ROADWAY DESIGN ENGINEER	HYDRAULICS ENGINEER
PRELIMINARY PLANS DO NOT USE FOR CONSTRUCTION	



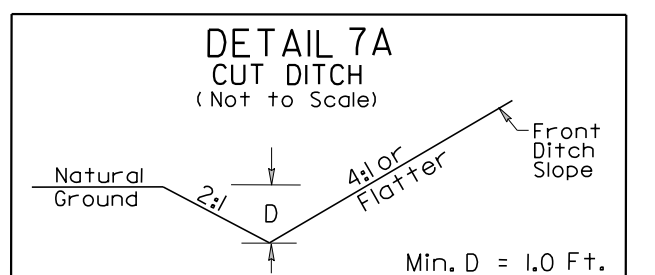
22Z



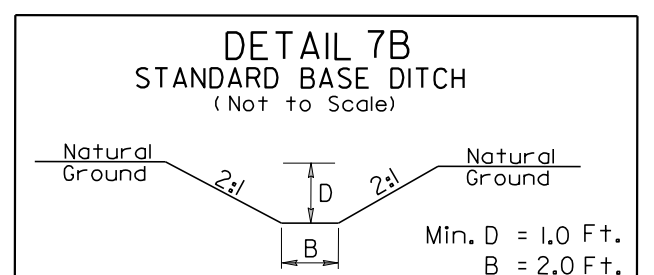
64 x 24 x 3
1.5 inch Skimmer
with 1.125 inch
Orifice Diameter
6 ft. weir
ID 0701

72 x 12 x 3
ID 0704

-L-
 PI Sta 53+94.10 Pls Sta 59+34.41
 $\Delta = 44^{\circ} 18' 15.0''$ (LT) $\Theta_s = 3^{\circ} 26' 46.9''$
 D = 4' 18" 28.6" Ls = 160.00'
 L = 1,028.43' LT = 106.69'
 T = 541.47' ST = 53.35'
 R = 1,330.00'
 SE = 0.06



-L- STA. 51+50 TO -L- STA. 52+50 LT
 -L- STA. 59+50 TO -L- STA. 62+00 LT
 -L- STA. 62+00 TO -L- STA. 63+00 LT



-L- STA. 61+85 LT

Place Matting for Erosion Control
on Slope as Work Allows.
Sta. 53+00 to Sta. 61+00 -L- LT

INSTALL MATTING FOR
EROSION CONTROL IN ALL
PROPOSED DITCH LINES.

20-B

23

MATCH LINE
-L- STA 65+00
SEE SHEET 8