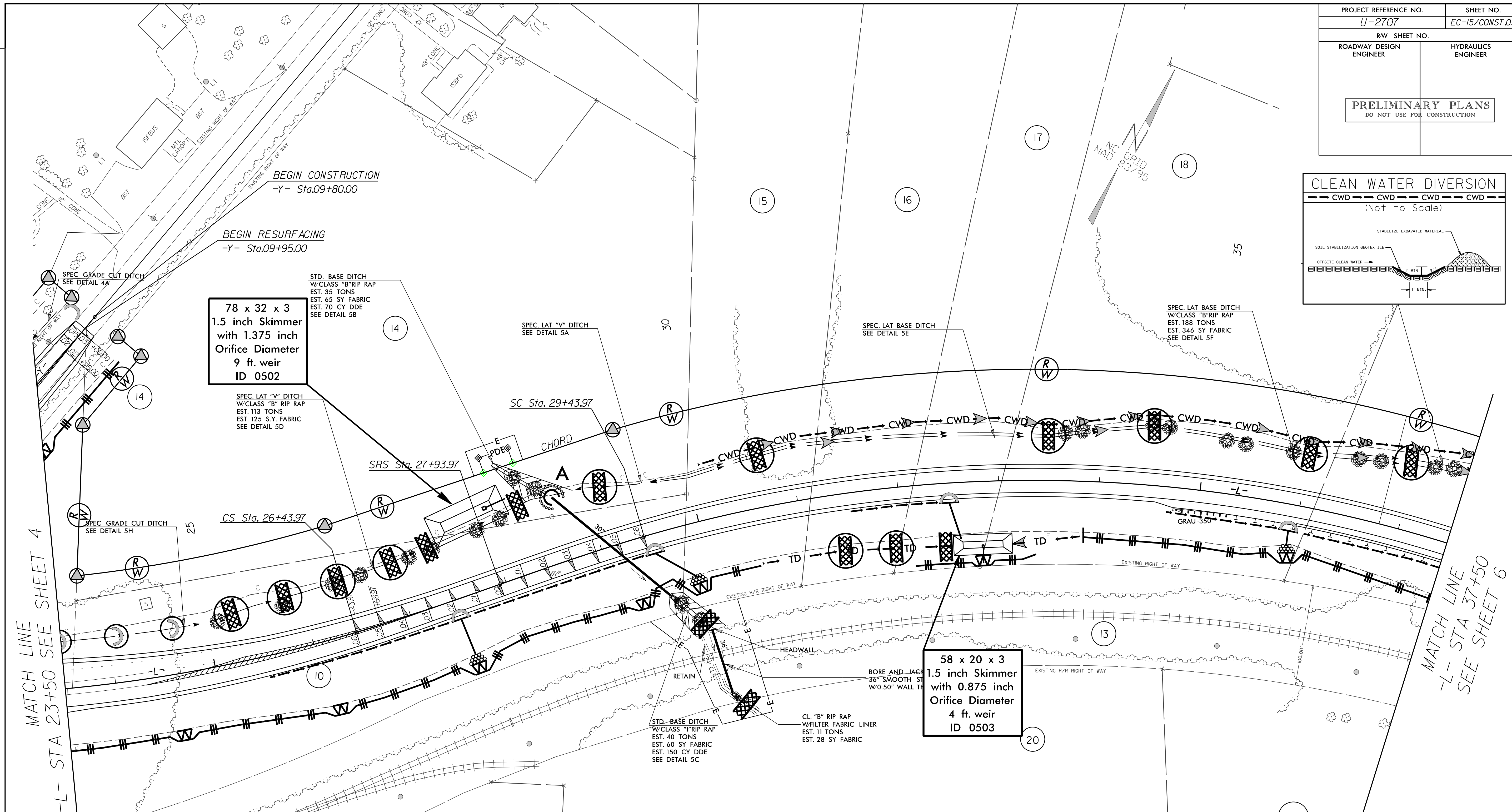
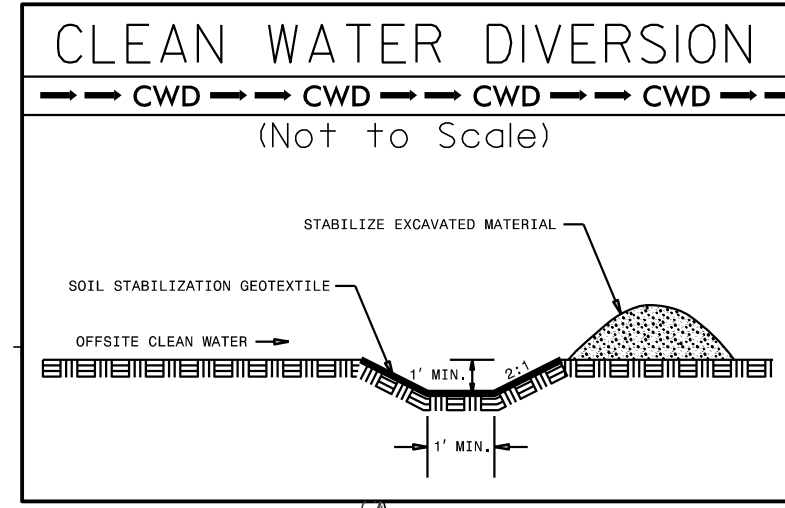
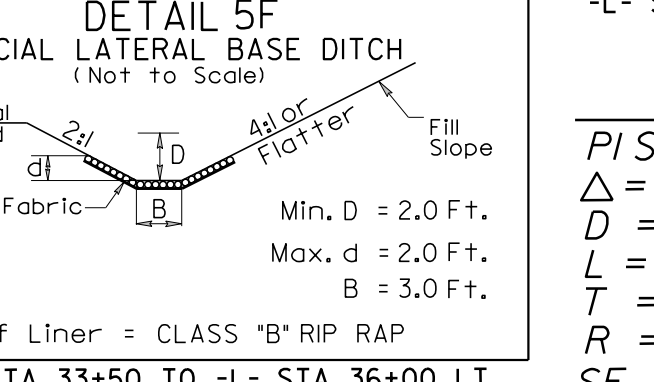
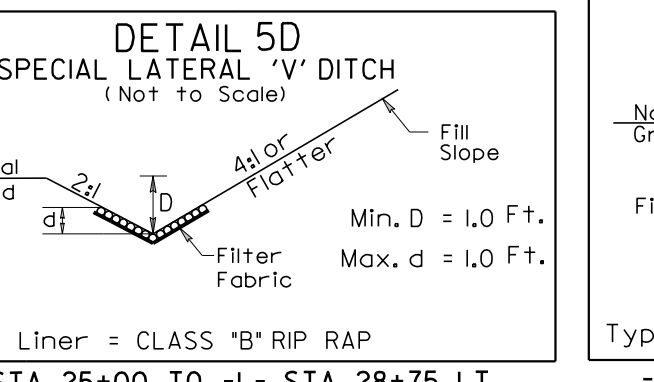
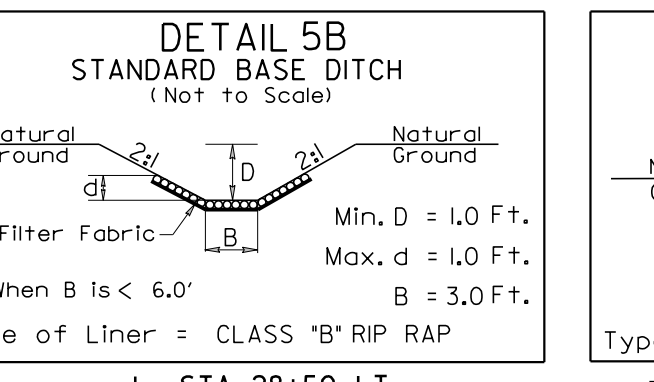
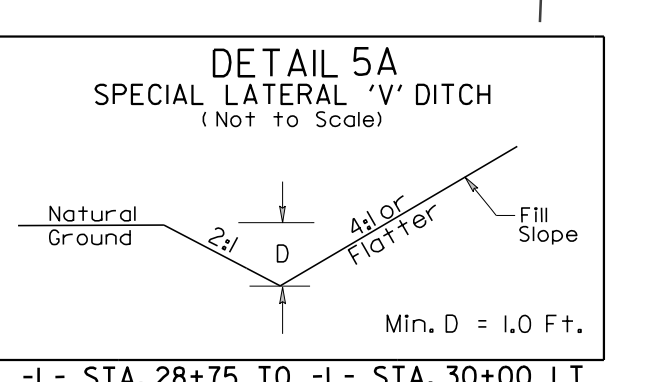
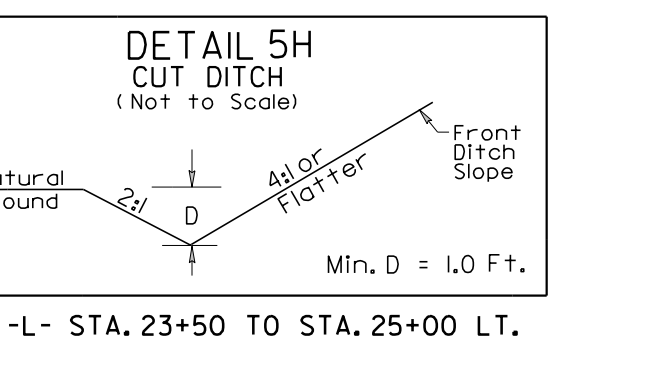
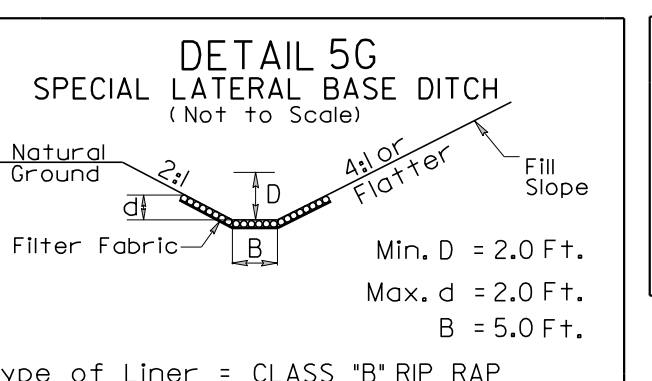
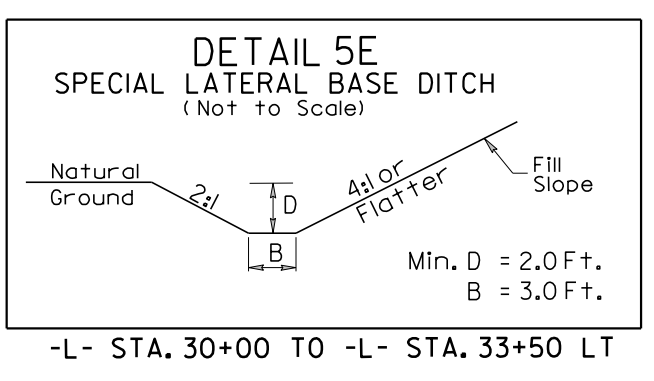
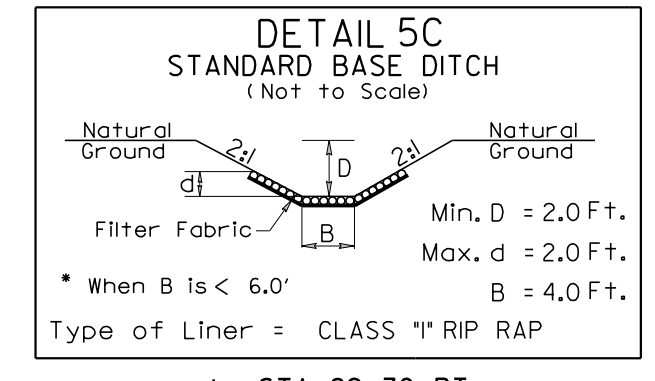


PROJECT REFERENCE NO. U-2707	SHEET NO. EC-15/CONST.05
RW SHEET NO.	
ROADWAY DESIGN ENGINEER	HYDRAULICS ENGINEER
<b>PRELIMINARY PLANS</b> DO NOT USE FOR CONSTRUCTION	



MATCH LINE -L- STA 23+50 SEE SHEET 4

MATCH LINE -L- STA 37+50 SEE SHEET 6



PI Sta 24+47.09 Δ = 15' 07" 44.9" (LT) D = 3' 49" 11.0" L = 396.08' T = 199.20' R = 1,500.00' SE = 0.06	PIs Sta 26+93.98 Θs = 2' 51' 53.2" Ls = 150.00' LT = 100.01' ST = 50.01'	PIs Sta 28+93.99 Θs = 3' 07" 30.8" Ls = 150.00' LT = 100.02' ST = 50.01'	PI Sta 33+81.20 Δ = 35' 16" 48.5" (RT) D = 4' 10" 01.1" L = 846.66' T = 437.23' R = 1,375.00' SE = 0.06
---	--	--	---

**Place Matting for Erosion Control on Slope as Work Allows.**  
Sta. 25+50 to Sta. 29+50 -L- RT  
Sta. 31+50 to Sta. 32+50 -L- RT  
Sta. 36+00 to Sta. 37+50 -L- RT

**INSTALL MATTING FOR EROSION CONTROL IN ALL PROPOSED DITCH LINES.**

REVISIONS