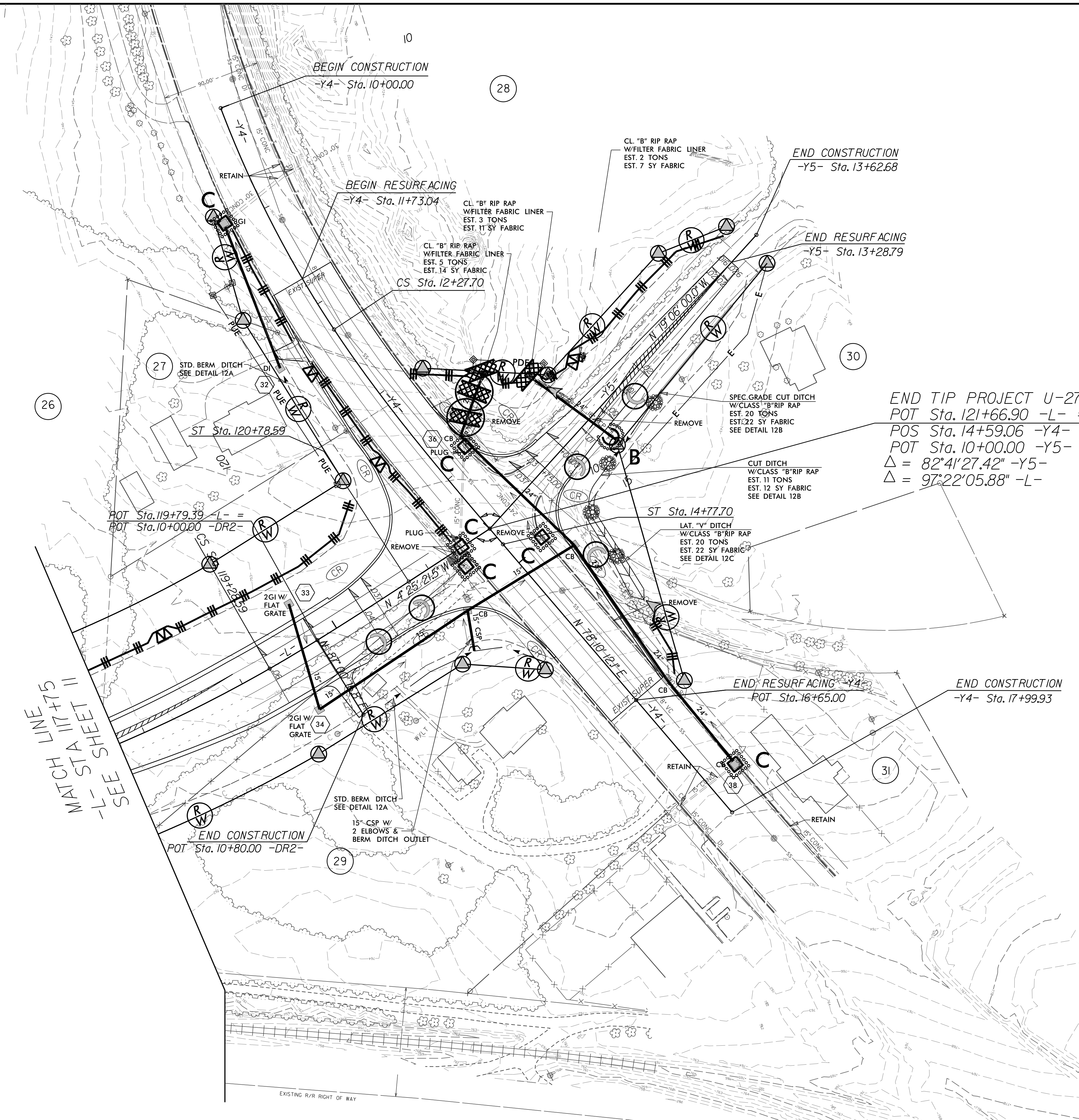
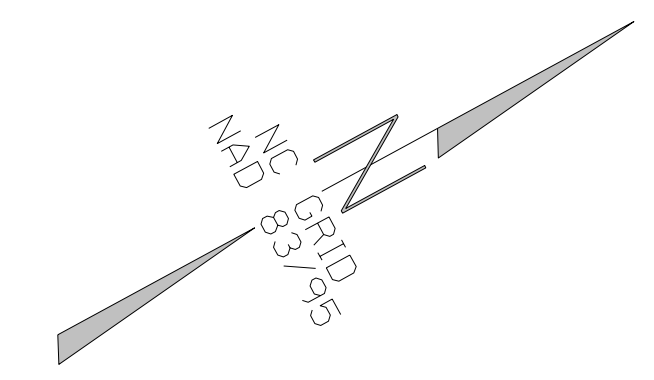


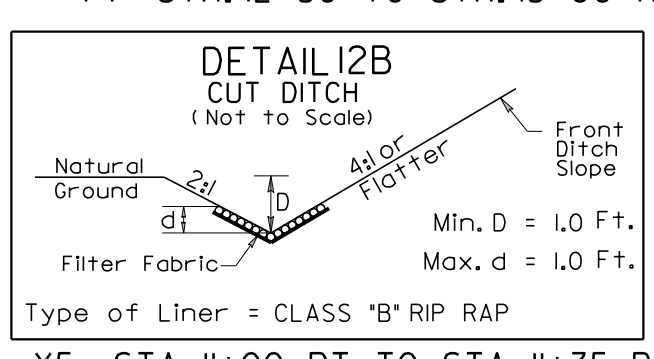
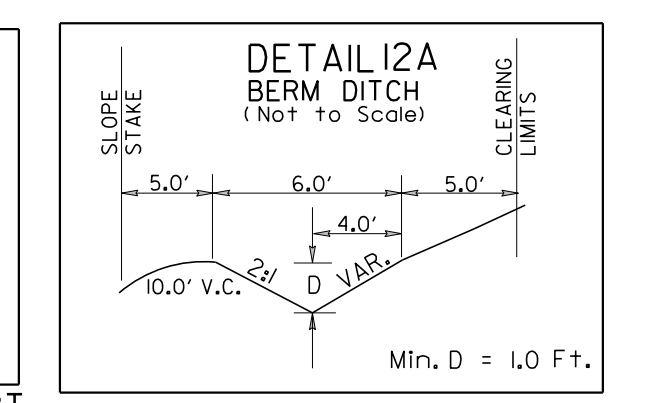
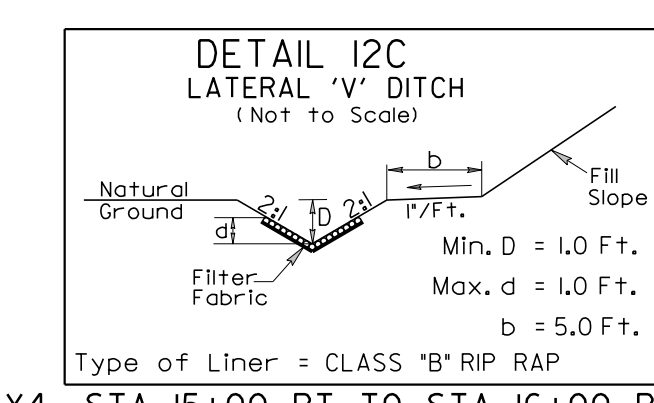
PRELIMINARY PLANS  
 DO NOT USE FOR CONSTRUCTION



-Y4-  
 PI Sta 11+14.33      Pls Sta 13+11.5  
 $\Delta = 12^{\circ}47'26.0"$  (LT)       $\Theta_s = 7^{\circ}01'17.5"$   
 D = 5'37.02.0"      Ls = 250.00'  
 L = 227.70      LT = 166.80'  
 T = 114.33'      ST = 83.45'  
 R = 1,020.00'      SE = EXIST.  
 SE = EXIST.

-L-  
 PI Sta 115+08.96      Pls Sta 119+78.60  
 $\Delta = 38^{\circ}01'36.1"$  (LT)       $\Theta_s = 3^{\circ}16'04.1"$   
 D = 4'21.25.5"      Ls = 150.00'  
 L = 872.75      LT = 100.02'  
 T = 453.13'      ST = 50.01'  
 R = 1,315.00'      SE = 0.06  
 SE = 0.06

END TIP PROJECT U-2707  
 POT Sta. 121+66.90 -L- =  
 POS Sta. 14+59.06 -Y4- =  
 POT Sta. 10+00.00 -Y5-  
 $\Delta = 82^{\circ}41'27.42"$  -Y5-  
 $\Delta = 97^{\circ}22'05.88"$  -L-



-Y4- STA. 15+00 RT TO STA. 16+00 RT  
 -L- STA. 120+00 RT TO -Y4- STA. 15+85 RT  
 -Y4- STA. 12+30 TO STA. 13+00 RT

NOTE:  
 PLACE TEMPORARY ROCK SEDIMENT DAMS TYPE - B AND TEMPORARY ROCK SILT CHECKS TYPE - A AT DRAINAGE OUTLETS.

NOTES: ANY DEVIATION FROM OPTIONS GIVEN WILL REQUIRE PRIOR APPROVAL BY ENGINEER.

ADDITIONAL EROSION CONTROL DEVICES MAY NEED TO BE INSTALLED AS DIRECTED BY THE ENGINEER.

REVISIONS