

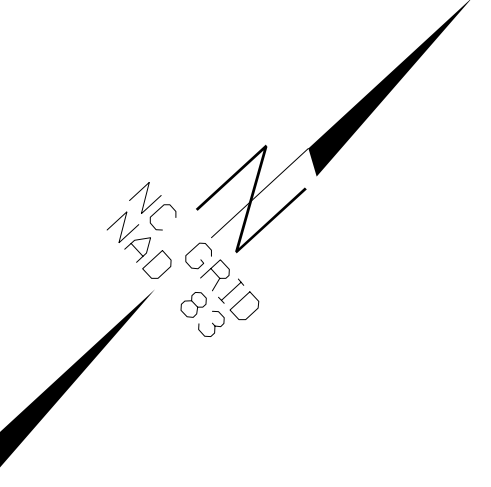
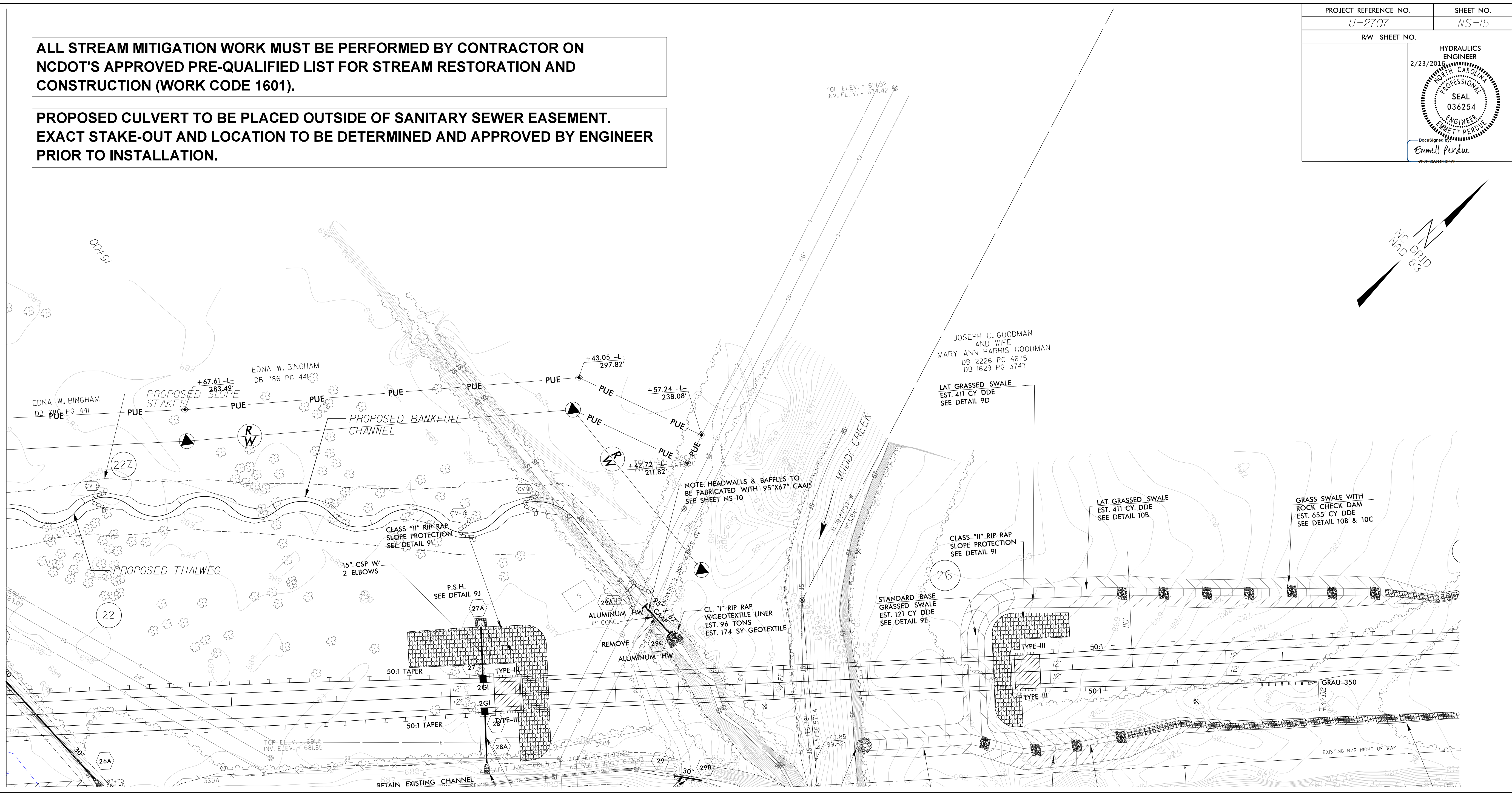
5/28/2016

PROJECT REFERENCE NO. U-2707	SHEET NO. NS-15
RW SHEET NO.	
HYDRAULICS ENGINEER 2/23/2016 NORTH CAROLINA PROFESSIONAL ENGINEER SEAL 036254 EMMETT PERDUE DocuSign Emmett Perdue 7275940494970	

ALL STREAM MITIGATION WORK MUST BE PERFORMED BY CONTRACTOR ON NCDOT'S APPROVED PRE-QUALIFIED LIST FOR STREAM RESTORATION AND CONSTRUCTION (WORK CODE 1601).

PROPOSED CULVERT TO BE PLACED OUTSIDE OF SANITARY SEWER EASEMENT. EXACT STAKE-OUT AND LOCATION TO BE DETERMINED AND APPROVED BY ENGINEER PRIOR TO INSTALLATION.

MATCH TO SHEET NS-14
-RI- STA 12+15.00



REVISIONS

