

**SEPI**  
ENGINEERING & CONSTRUCTION

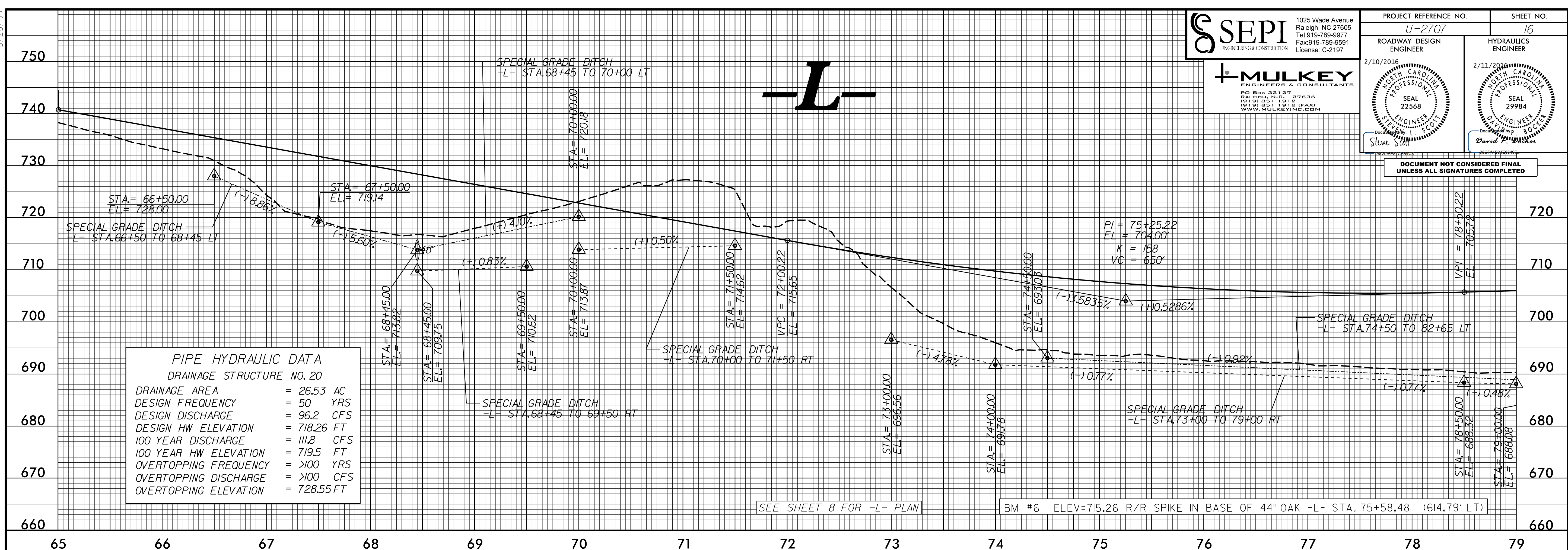
1025 Wade Avenue  
Raleigh, NC 27605  
Tel: 919-789-9977  
Fax: 919-789-9591  
License: C-2197

**MULKEY**  
ENGINEERS & CONSULTANTS

PO BOX 33127  
RALEIGH, N.C. 27636  
(919) 881-1015  
(919) 881-1018 (FAX)  
WWW.MULKEYINC.COM

PROJECT REFERENCE NO. <b>U-2707</b>	SHEET NO. <b>16</b>
ROADWAY DESIGN ENGINEER 2/10/2016 	HYDRAULICS ENGINEER 2/11/2016 

DOCUMENT NOT CONSIDERED FINAL UNLESS ALL SIGNATURES COMPLETED



**PIPE HYDRAULIC DATA**  
DRAINAGE STRUCTURE NO. 20

DRAINAGE AREA	= 26.53 AC
DESIGN FREQUENCY	= 50 YRS
DESIGN DISCHARGE	= 96.2 CFS
DESIGN HW ELEVATION	= 718.26 FT
100 YEAR DISCHARGE	= 111.8 CFS
100 YEAR HW ELEVATION	= 719.5 FT
OVERTOPPING FREQUENCY	= >100 YRS
OVERTOPPING DISCHARGE	= >100 CFS
OVERTOPPING ELEVATION	= 728.55 FT

**PIPE HYDRAULIC DATA**  
DRAINAGE STRUCTURE NO. 26

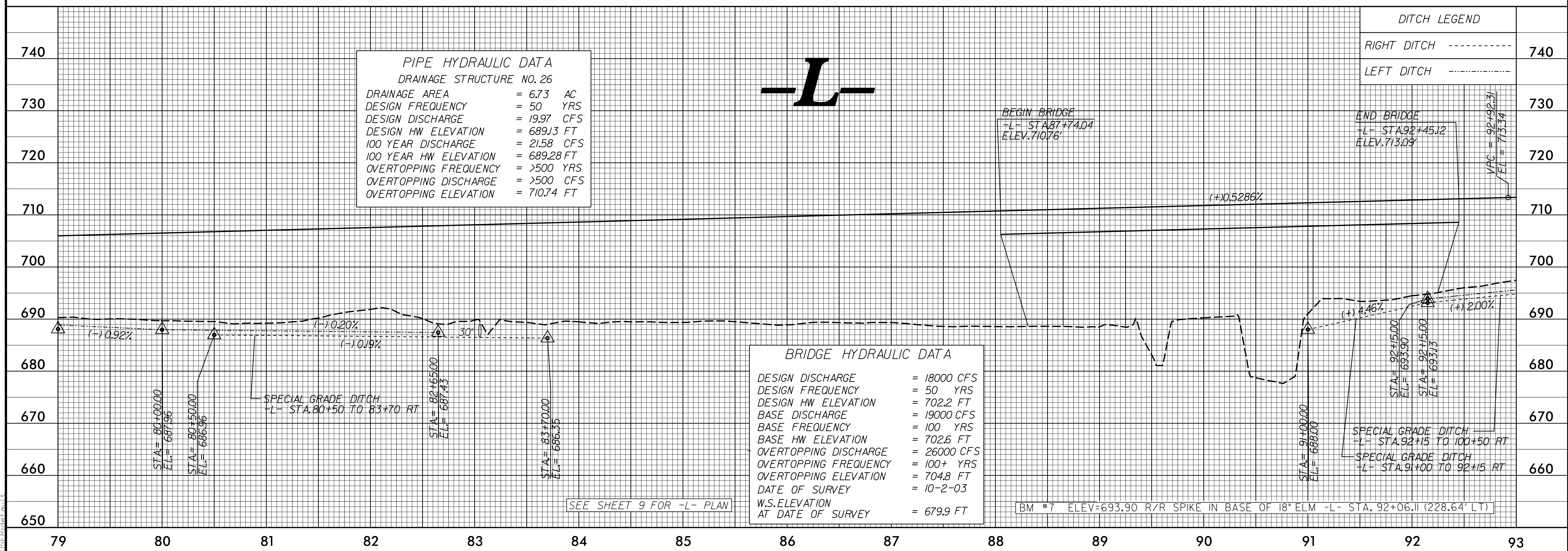
DRAINAGE AREA	= 6.73 AC
DESIGN FREQUENCY	= 50 YRS
DESIGN DISCHARGE	= 19.97 CFS
DESIGN HW ELEVATION	= 689.13 FT
100 YEAR DISCHARGE	= 21.58 CFS
100 YEAR HW ELEVATION	= 689.28 FT
OVERTOPPING FREQUENCY	= >500 YRS
OVERTOPPING DISCHARGE	= >500 CFS
OVERTOPPING ELEVATION	= 710.74 FT

**BRIDGE HYDRAULIC DATA**

DESIGN DISCHARGE	= 18000 CFS
DESIGN FREQUENCY	= 50 YRS
DESIGN HW ELEVATION	= 702.2 FT
BASE DISCHARGE	= 19000 CFS
BASE FREQUENCY	= 100 YRS
BASE HW ELEVATION	= 702.6 FT
OVERTOPPING DISCHARGE	= 26000 CFS
OVERTOPPING FREQUENCY	= 100+ YRS
OVERTOPPING ELEVATION	= 704.8 FT
DATE OF SURVEY	= 10-2-03
W.S.ELEVATION AT DATE OF SURVEY	= 679.9 FT

**DITCH LEGEND**

RIGHT DITCH	---
LEFT DITCH	---



SEE SHEET 9 FOR -L- PLAN

BM #7 ELEV=693.90 R/R SPIKE IN BASE OF 18" ELM -L- STA. 92+06.11 (228.64' LT)