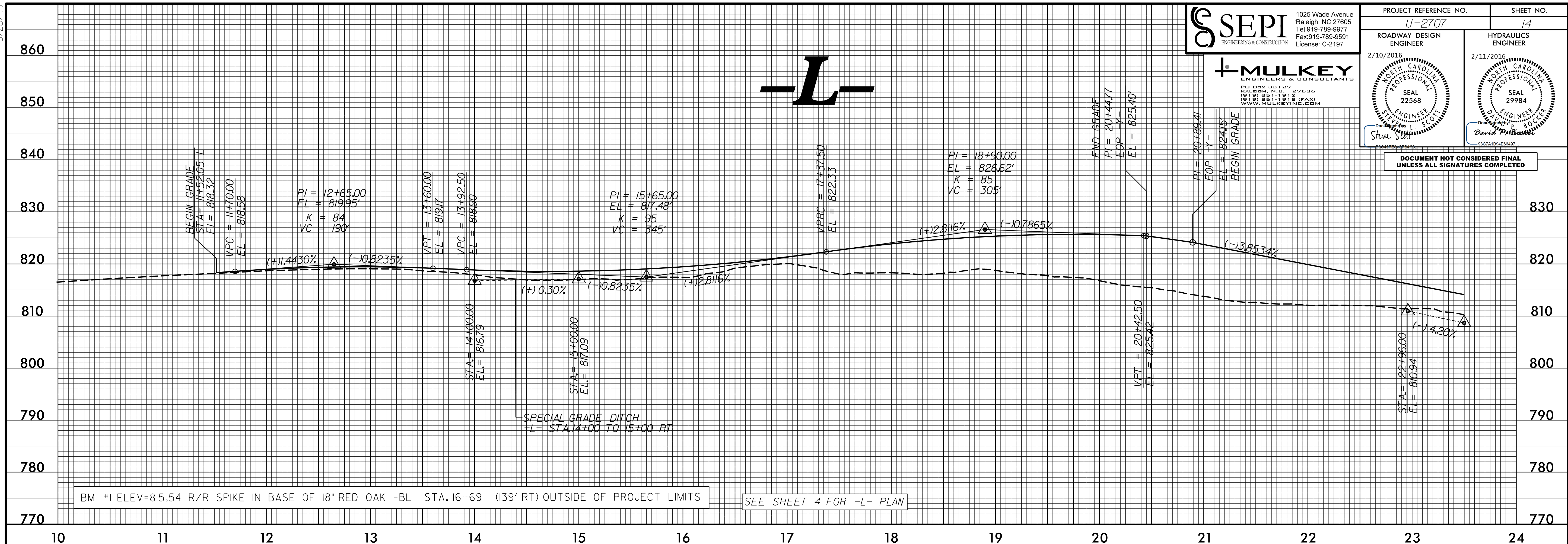
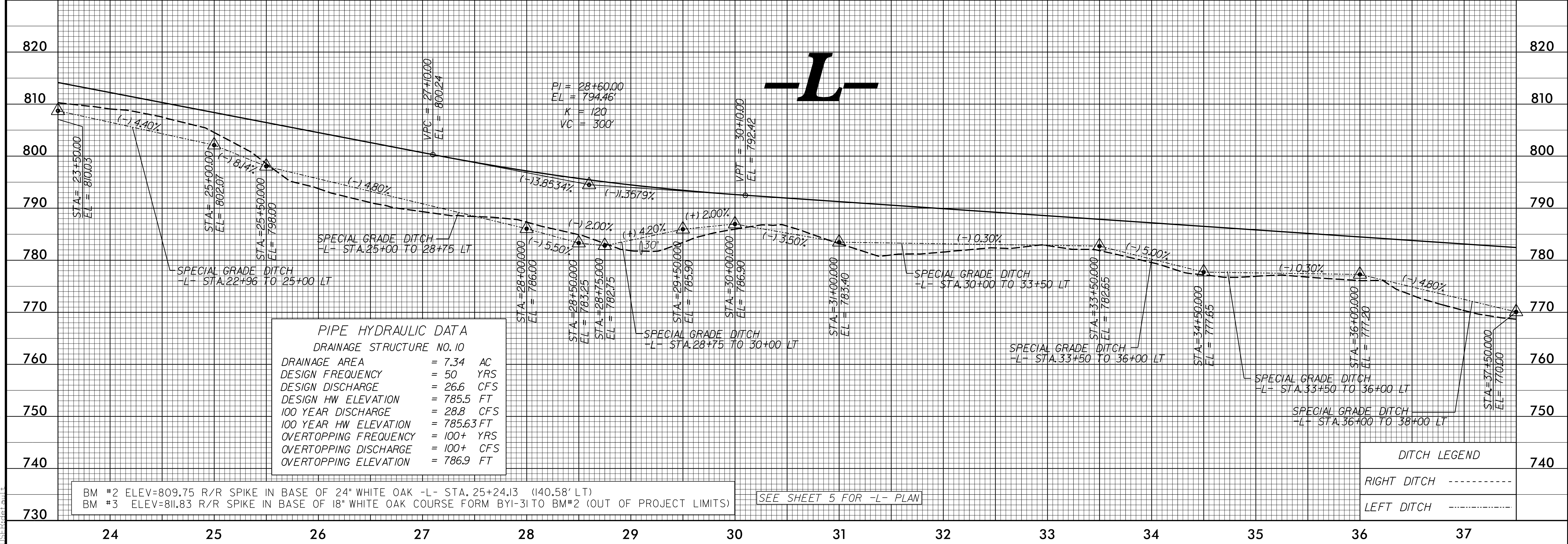


DOCUMENT NOT CONSIDERED FINAL UNLESS ALL SIGNATURES COMPLETED



BM #1 ELEV=815.54 R/R SPIKE IN BASE OF 18' RED OAK -BL- STA. 16+69 (139' RT) OUTSIDE OF PROJECT LIMITS

SEE SHEET 4 FOR -L- PLAN



PIPE HYDRAULIC DATA
DRAINAGE STRUCTURE NO. 10

DRAINAGE AREA	= 7.34 AC
DESIGN FREQUENCY	= 50 YRS
DESIGN DISCHARGE	= 26.6 CFS
DESIGN HW ELEVATION	= 785.5 FT
100 YEAR DISCHARGE	= 28.8 CFS
100 YEAR HW ELEVATION	= 785.63 FT
OVERTOPPING FREQUENCY	= 100+ YRS
OVERTOPPING DISCHARGE	= 100+ CFS
OVERTOPPING ELEVATION	= 786.9 FT

BM #2 ELEV=809.75 R/R SPIKE IN BASE OF 24' WHITE OAK -L- STA. 25+24.13 (140.58' LT)
BM #3 ELEV=811.83 R/R SPIKE IN BASE OF 18' WHITE OAK COURSE FORM BYI-31 TO BM#2 (OUT OF PROJECT LIMITS)

SEE SHEET 5 FOR -L- PLAN

DITCH LEGEND

RIGHT DITCH	-----
LEFT DITCH	-----