

8/17/99

REVISIONS

3/8/2016 U2707_Rdy_psh_13.dgn
11:51:00 AM

SSEPI
ENGINEERING & CONSTRUCTION

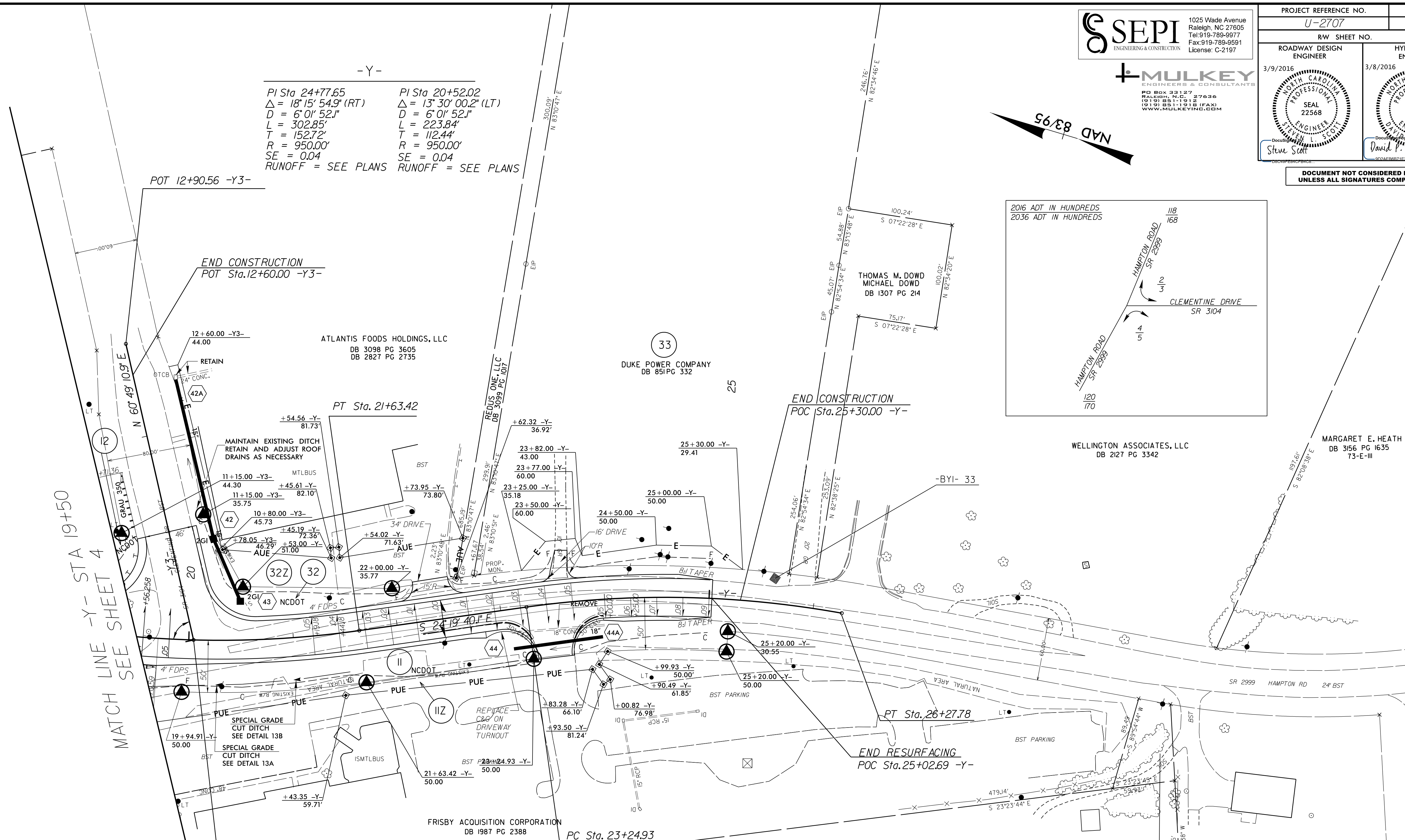
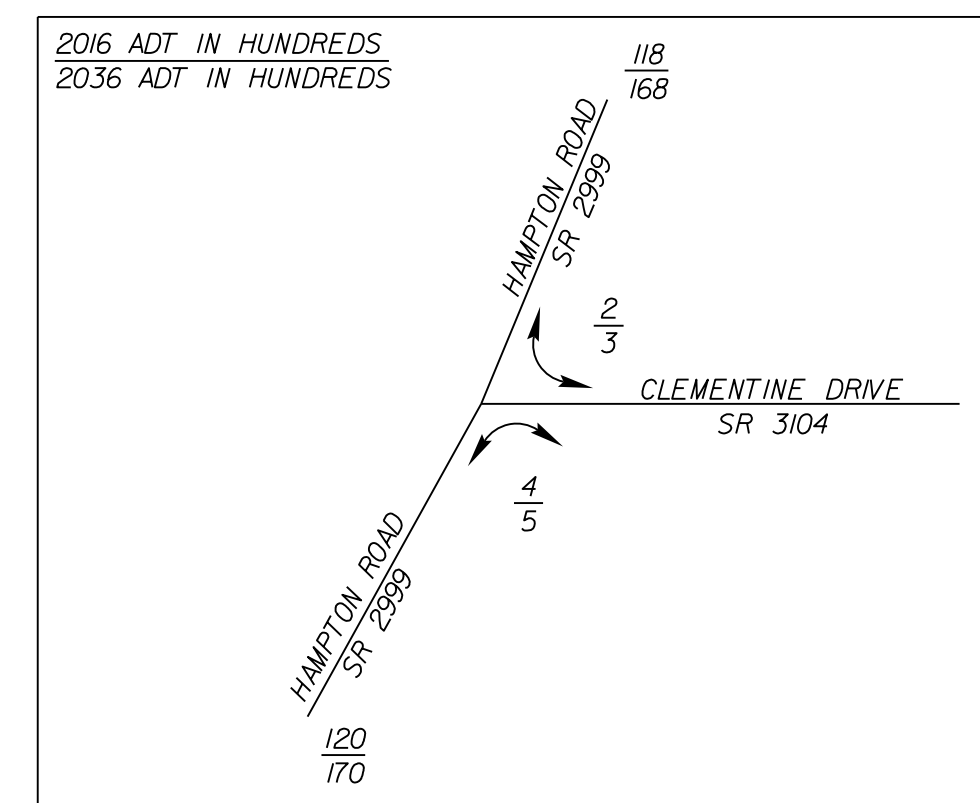
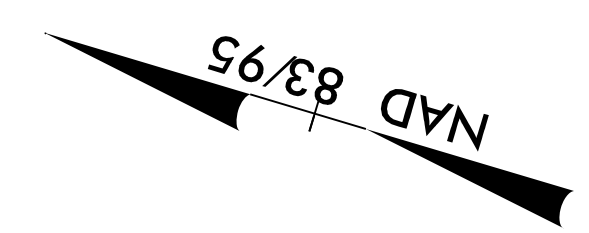
1025 Wade Avenue
Raleigh, NC 27605
Tel: 919-789-9977
Fax: 919-789-9591
License: C-2197

MULKEY
ENGINEERS & CONSULTANTS

PO Box 33127
Raleigh, NC 27636
(919) 851-1912
(919) 851-1918 FAX
WWW.MULKEYINC.COM

| | |
|--|---------------------------------|
| PROJECT REFERENCE NO. <i>U-2707</i> | SHEET NO. <i>13</i> |
| RW SHEET NO. | |
| ROADWAY DESIGN ENGINEER 3/9/2016 | HYDRAULICS ENGINEER 3/8/2016 |
| | |

DOCUMENT NOT CONSIDERED FINAL UNLESS ALL SIGNATURES COMPLETED



-Y-

PI Sta 24+77.65 PI Sta 20+52.02
 $\Delta = 18' 15'' 54.9''$ (RT) $\Delta = 13' 30'' 00.2''$ (LT)
 $D = 6' 0'' 52.1''$ $D = 6' 0'' 52.1''$
 $L = 302.85'$ $L = 223.84'$
 $T = 152.72'$ $T = 112.44'$
 $R = 950.00'$ $R = 950.00'$
 $SE = 0.04$ $SE = 0.04$
 RUNOFF = SEE PLANS RUNOFF = SEE PLANS

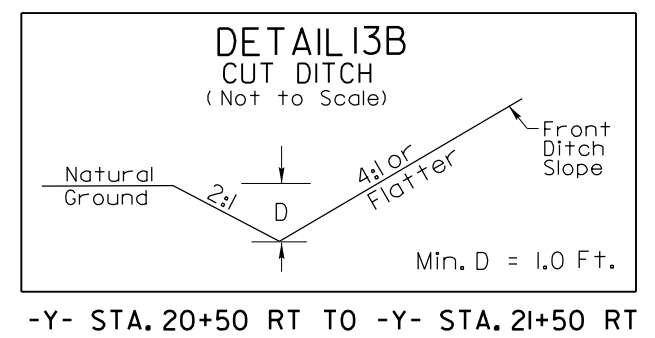
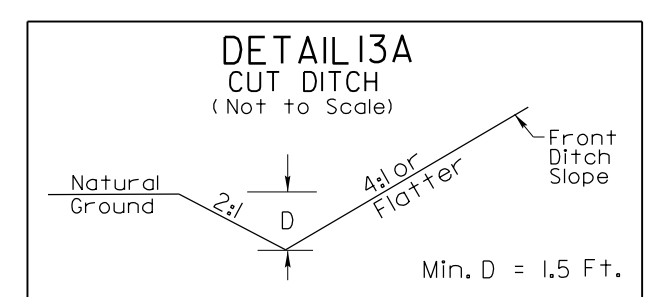
POT 12+90.56 -Y3-

END CONSTRUCTION
POT Sta. 12+60.00 -Y3-

END CONSTRUCTION
POC Sta. 25+30.00 -Y-

END RESURFACING
POC Sta. 25+02.69 -Y-

MATCH LINE -Y- STA 19+50
SEE SHEET 4



NOTE: NEW ENTRANCE MUST BE CONSTRUCTED BEFORE OBSTRUCTING THE EXISTING TRUCK ENTRANCE IN ANY WAY.

SEE SHEET 18 FOR -Y- GRADE
SEE SHEET 18 FOR -Y3- GRADE