

8/17/99

REVISIONS

**SEPI**  
ENGINEERING & CONSTRUCTION  
1025 Wade Avenue  
Raleigh, NC 27605  
Tel: 919-789-9977  
Fax: 919-789-9591  
License: C-2197

**MULKEY**  
ENGINEERS & CONSULTANTS  
PO Box 33127  
Raleigh, N.C. 27636  
(919) 851-1912  
(919) 851-1918 (FAX)  
WWW.MULKEYINC.COM

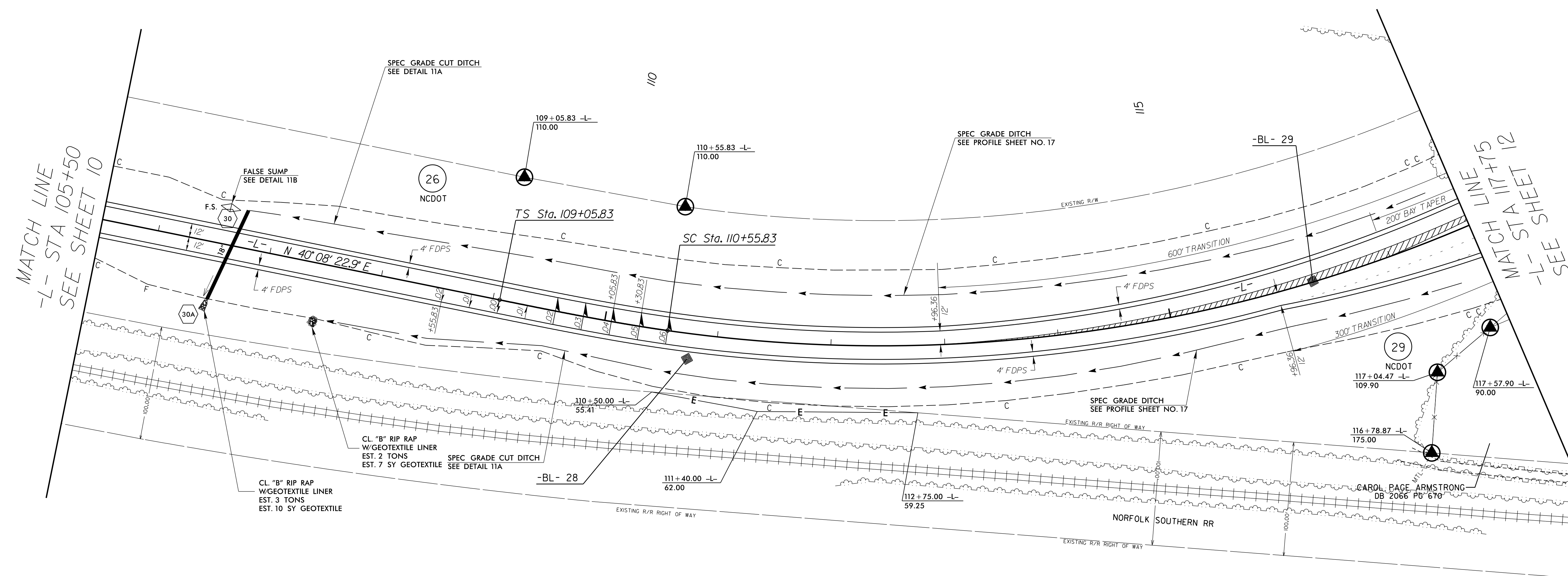
PROJECT REFERENCE NO. <i>U-2707</i>	SHEET NO. <i>11</i>
RW SHEET NO.	
ROADWAY DESIGN ENGINEER 2/10/2016 SEAL 22568 Steve J. [Signature]	HYDRAULICS ENGINEER 2/11/2016 SEAL 29984 David B. [Signature]

DOCUMENT NOT CONSIDERED FINAL UNLESS ALL SIGNATURES COMPLETED



JOSEPH C. GOODMAN  
AND WIFE  
MARY ANN HARRIS GOODMAN  
DB 2226 PG 4675  
DB 1629 PG 3747  
DB 2688 PG 1080

BM #8

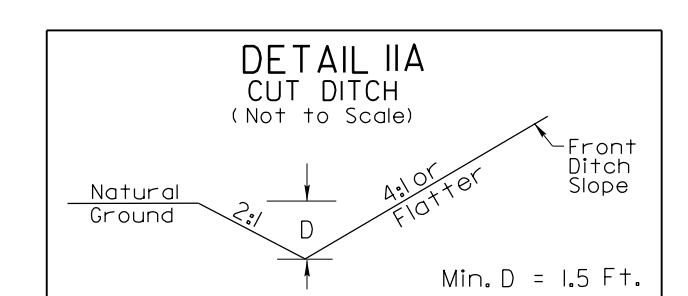


MATCH LINE  
-L- STA 105+50  
SEE SHEET 10

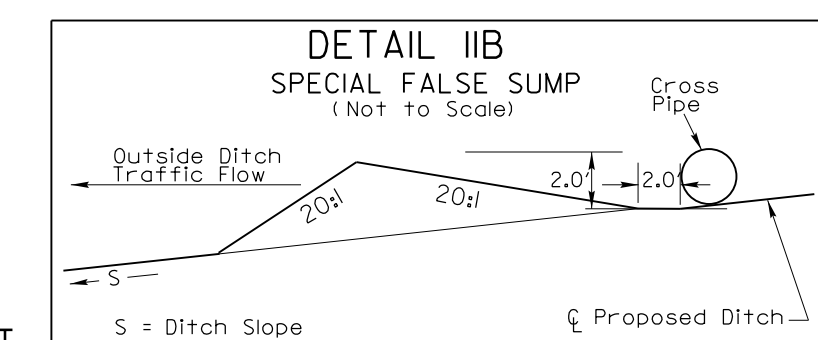
MATCH LINE  
-L- STA 117+75  
SEE SHEET 12

-L-

<i>PIs Sta 110+05.85</i> $\theta_s = 3^\circ 16' 04.1''$ $L_s = 150.00'$ $LT = 100.02'$ $ST = 50.01'$	<i>PI Sta 115+08.96</i> $\Delta = 38^\circ 01' 36.1'' (LT)$ $D = 4^\circ 21' 25.5''$ $L = 872.75'$ $T = 453.13'$ $R = 1,315.00'$ $SE = 0.06$ $RUNOFF = 150'$
---	---



-L- STA. 106+75 TO -L- STA. 108+00 LT  
-L- STA. 107+50 TO -L- STA. 110+00 RT



-L- STA. 106+60 LT

SEE SHEET 17 & 18 FOR -L- GRADE

1/28/2016 12:07\_Pdu\_psh\_11.dgn