

8/17/99

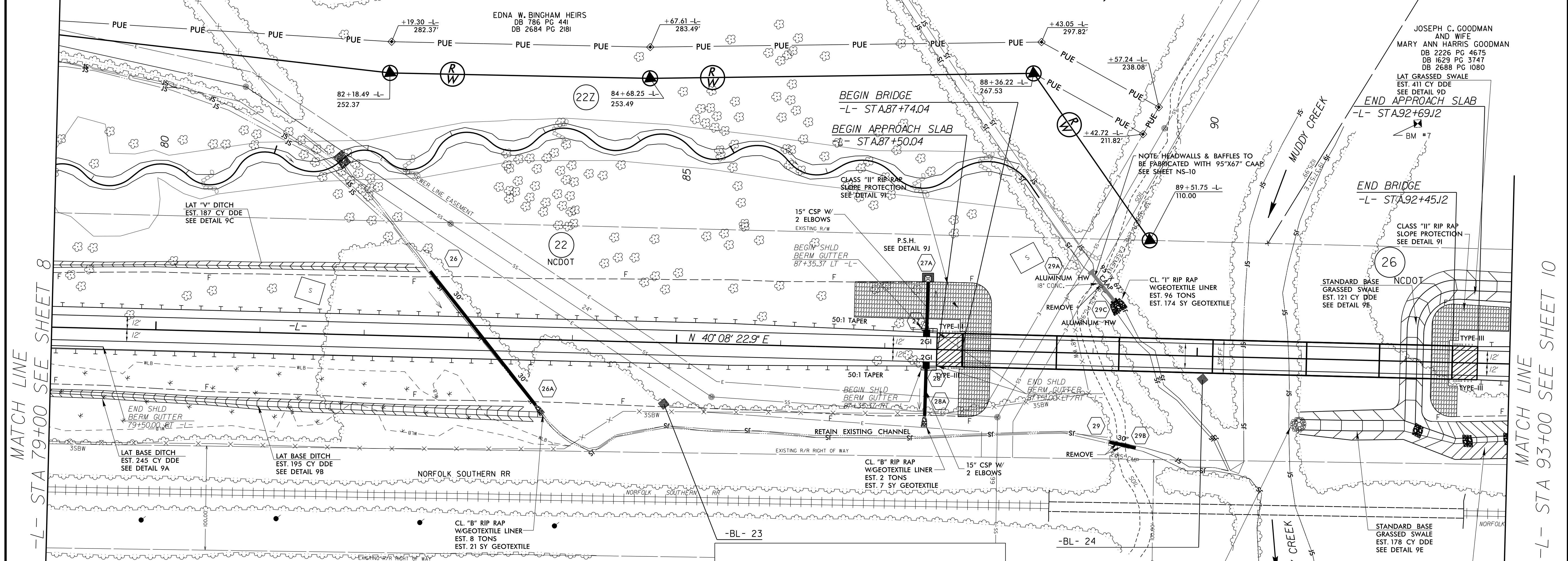
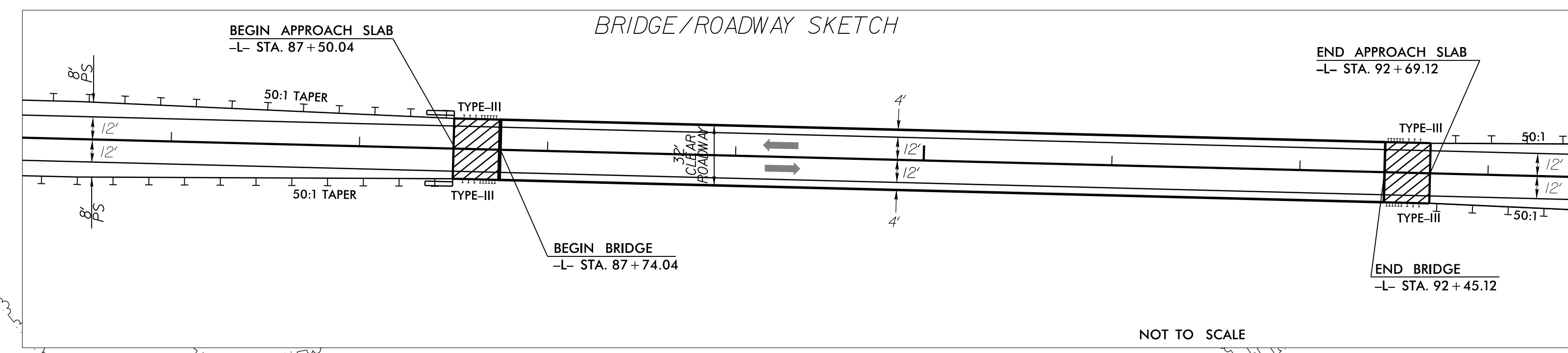
**SEPI**  
ENGINEERING & CONSTRUCTION

1025 Wade Avenue  
Raleigh, NC 27605  
Tel: 919-789-9977  
Fax: 919-789-9591  
License: C-2197

**MULKEY**  
ENGINEERS & CONSULTANTS

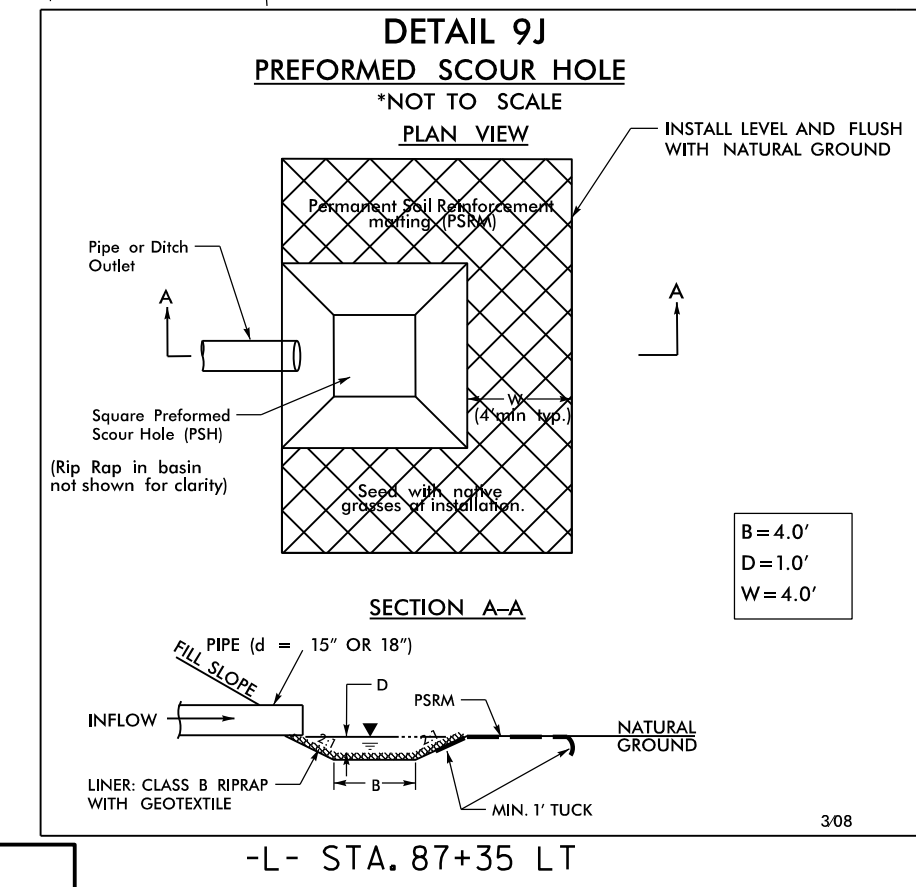
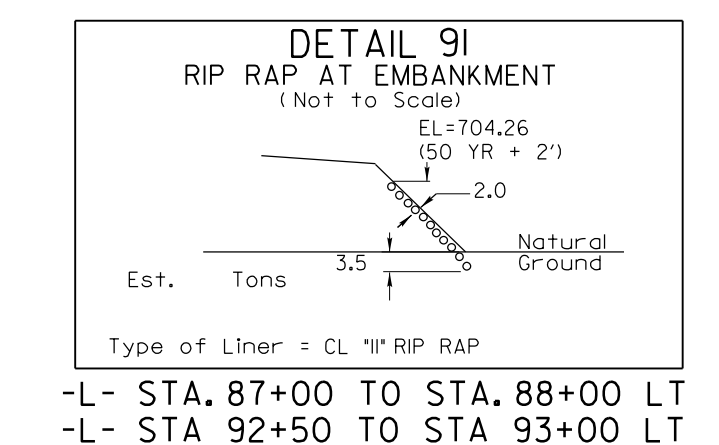
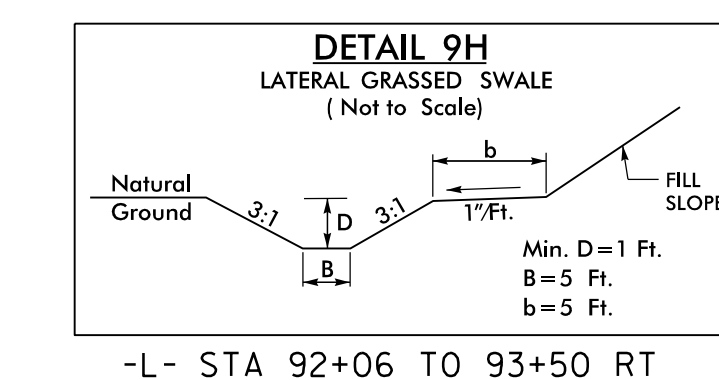
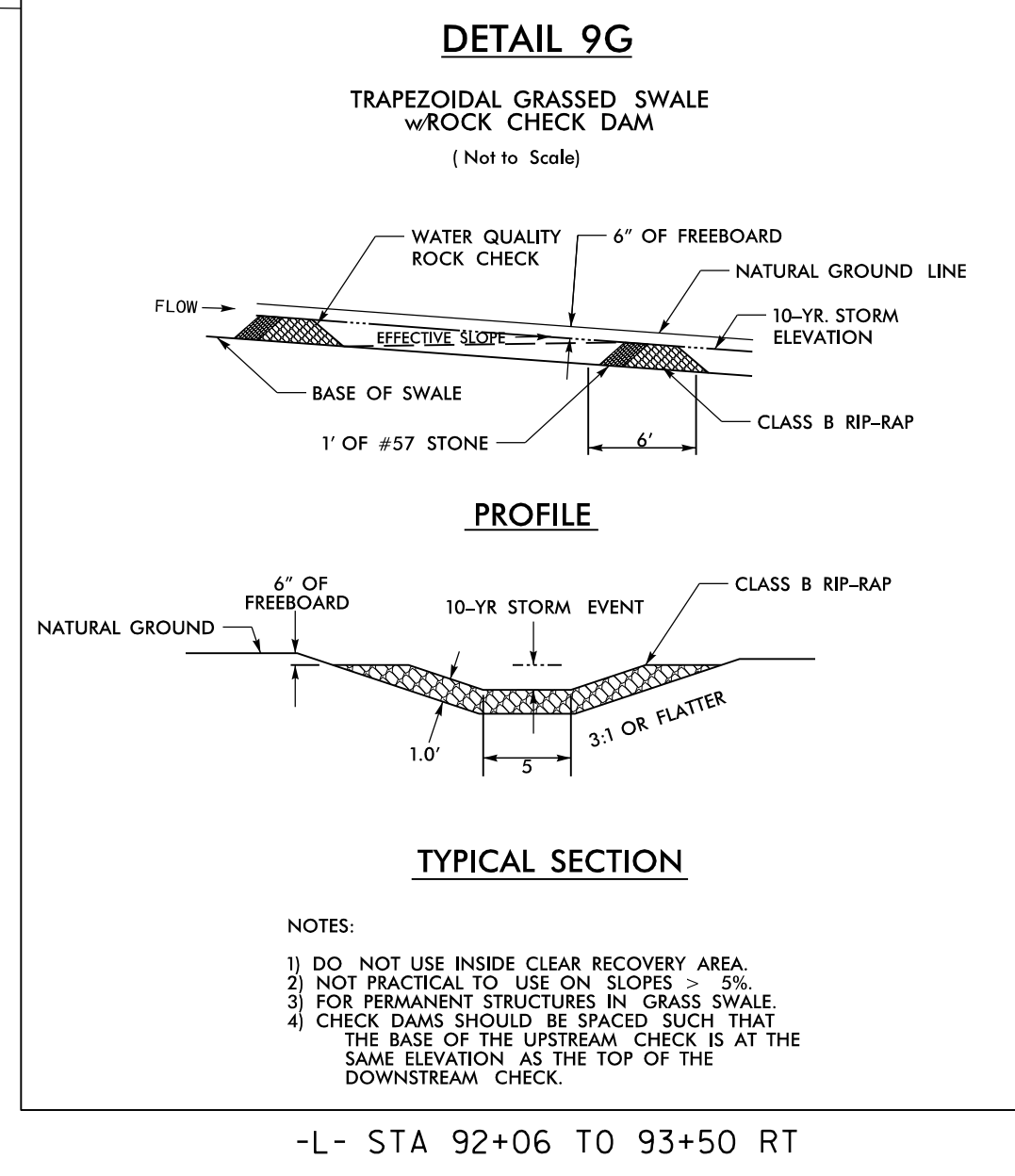
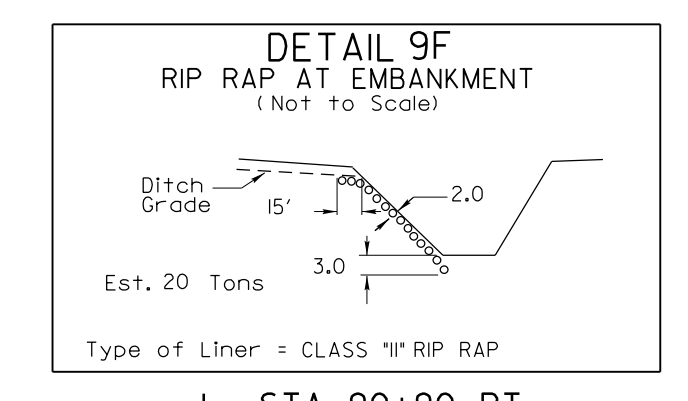
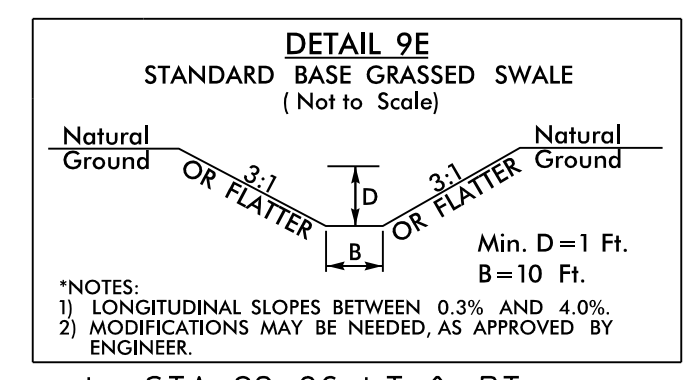
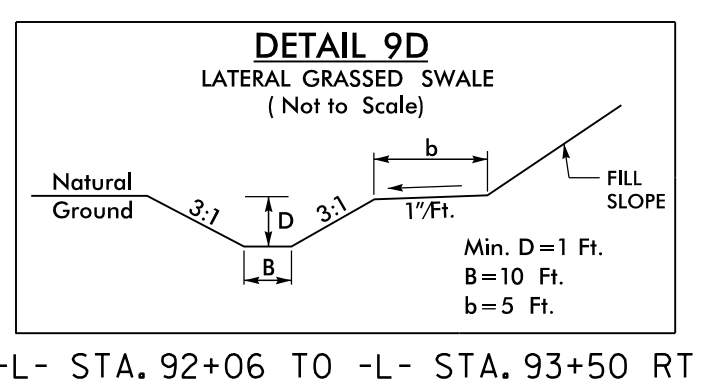
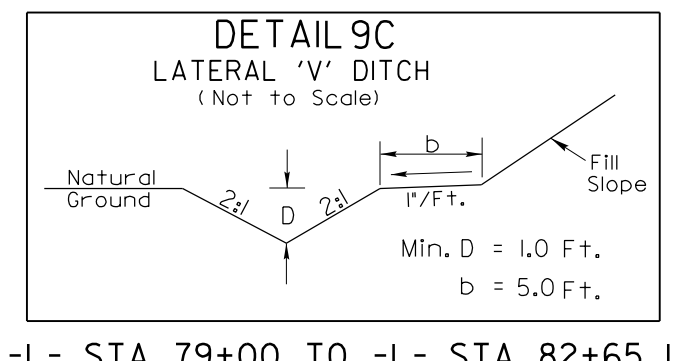
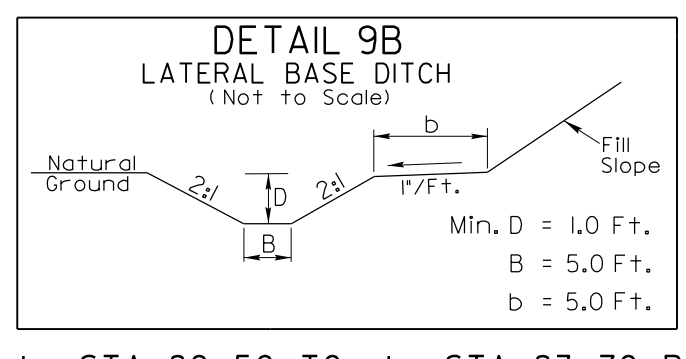
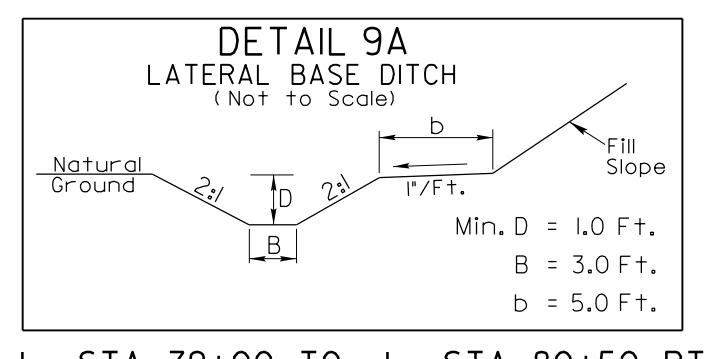
PO Box 33127  
Raleigh, NC 27636  
(919) 851-1912  
(919) 851-1918 FAX  
WWW.MULKEYINC.COM

PROJECT REFERENCE NO. <b>U-2707</b>	SHEET NO. <b>9</b>
R/W SHEET NO.	
ROADWAY DESIGN ENGINEER 2/23/2016	HYDRAULICS ENGINEER 2/23/2016



MATCH LINE -L- STA 79+00 SEE SHEET 8

MATCH LINE -L- STA 93+00 SEE SHEET 10



All Stream Mitigation Work must be performed by Contractor on NCDOT's Approved Pre-Qualified List for Stream Restoration and Construction (Work Code 1601)

Proposed culvert to be placed outside of Sanitary Sewer Easement. Exact stake-out and location to be determined and approved by Engineer prior to Installation.

SEE THE NATURAL STREAM PLANS FOR STREAM RELOCATION FOR STRUCTURES PLANS SEE SHEETS S1-01 THRU S1-42

SEE SHEET 16 FOR -L- GRADE

2/23/2016 11:51:00 AM 2707\_Rdy\_psh\_09.dgn