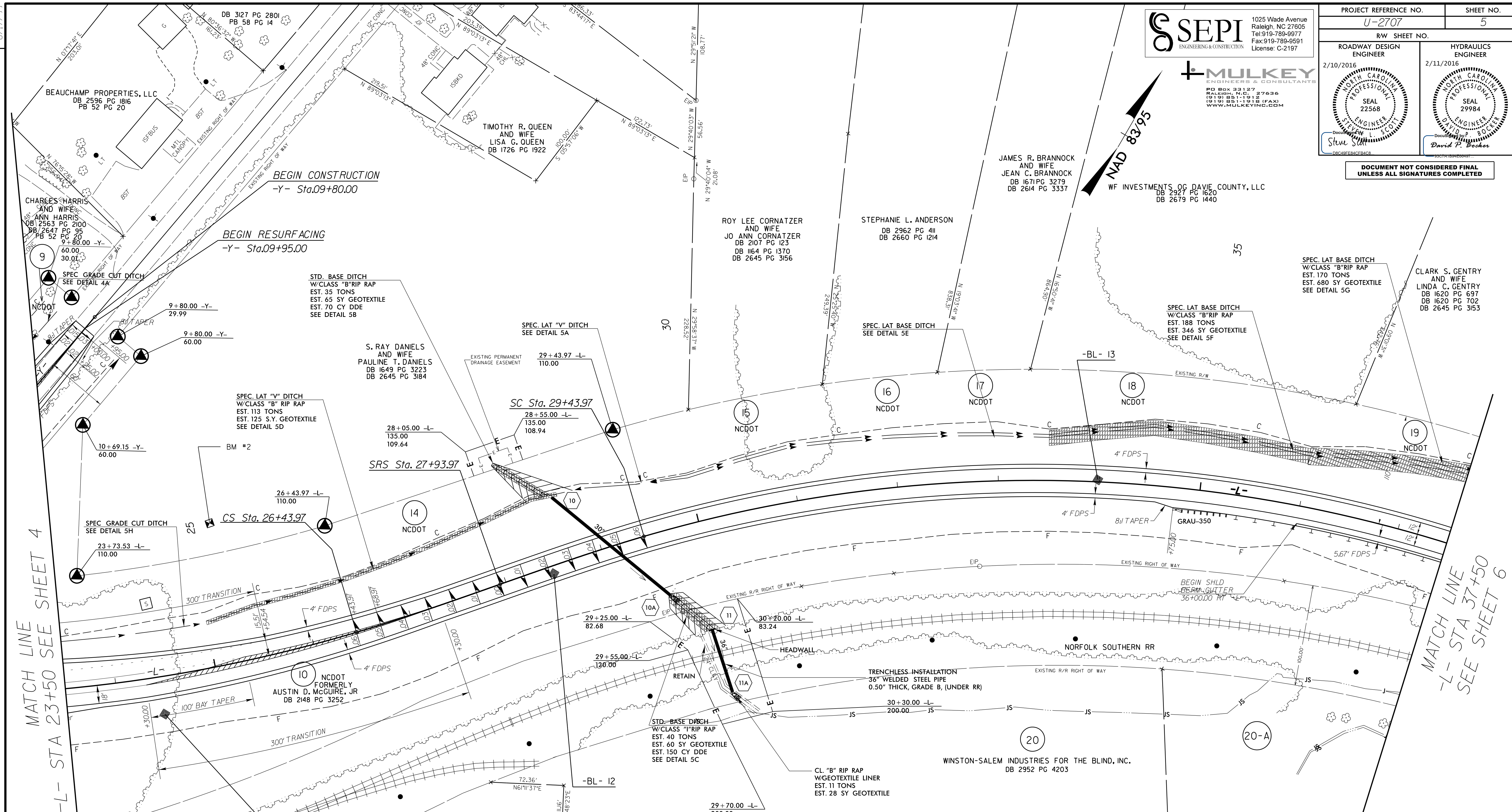


**SEPI**  
ENGINEERS & CONSULTANTS  
1025 Wade Avenue  
Raleigh, NC 27605  
Tel: 919-789-9977  
Fax: 919-789-9591  
License: C-2197

**MULKEY**  
ENGINEERS & CONSULTANTS  
PO BOX 33127  
RALEIGH, NC 27636  
(919) 851-1912  
(919) 851-1918 (FAX)  
WWW.MULKEYINC.COM

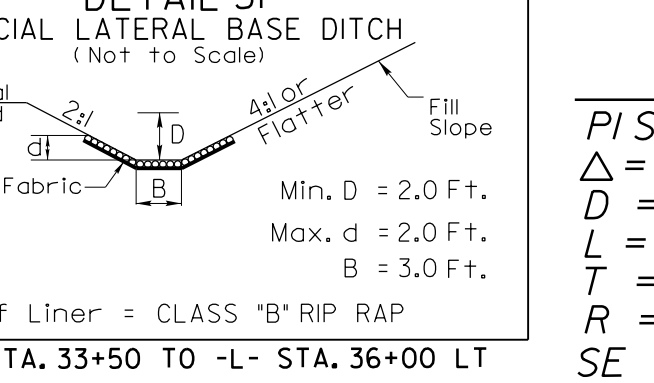
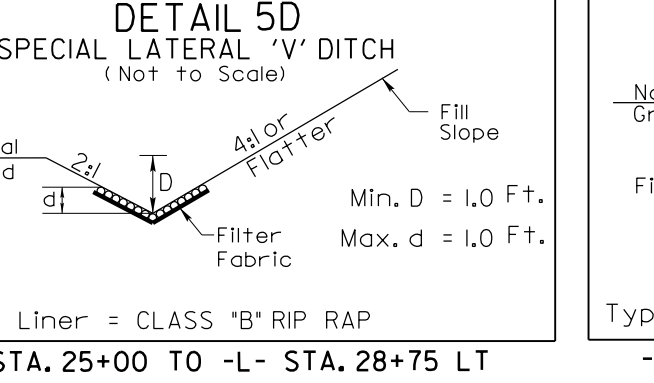
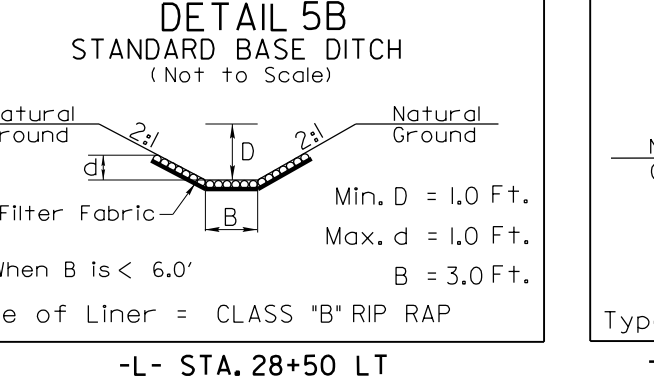
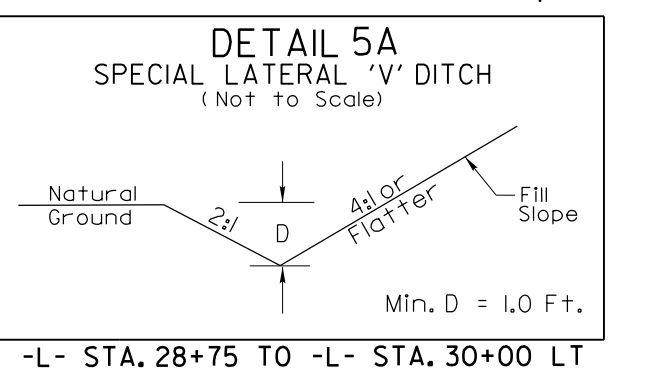
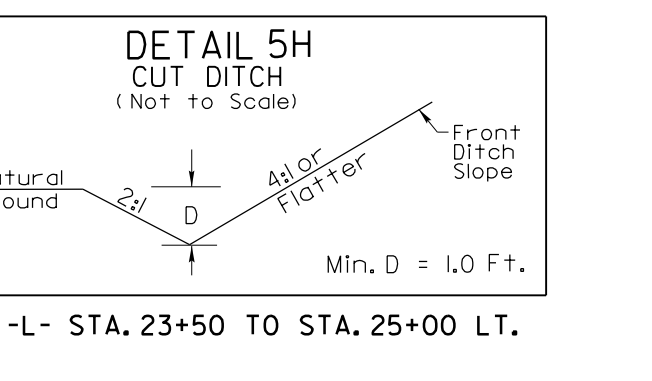
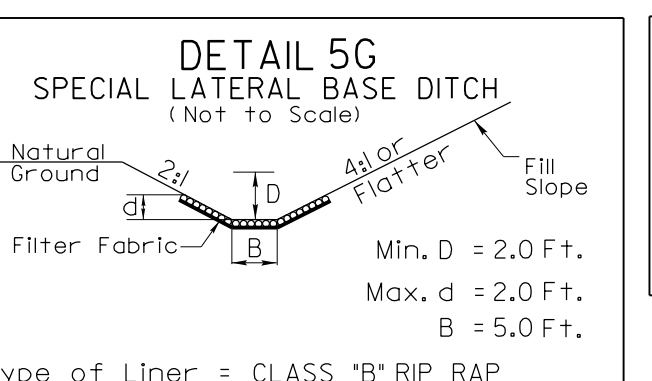
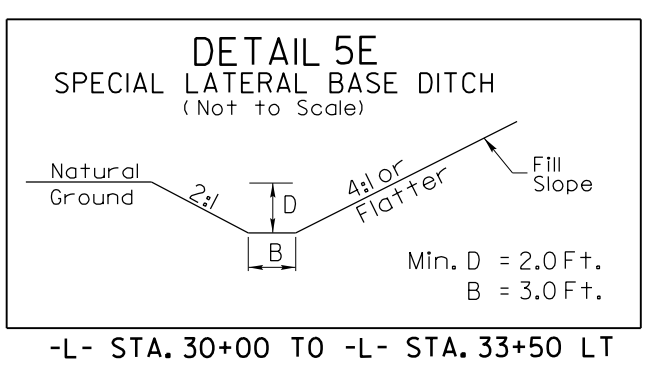
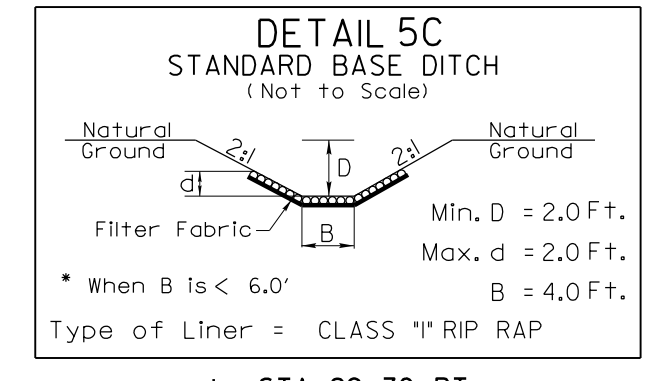
PROJECT REFERENCE NO.		SHEET NO.
U-2707		5
RW SHEET NO.		HYDRAULICS ENGINEER
ROADWAY DESIGN ENGINEER	2/10/2016	2/11/2016

DOCUMENT NOT CONSIDERED FINAL UNLESS ALL SIGNATURES COMPLETED



MATCH LINE SHEET 4 -L- STA 23+50 SEE SHEET 4

MATCH LINE -L- STA 37+50 SEE SHEET 6



**-L-**

PI Sta 24+47.09 Δ = 15' 07" 44.9" (LT) D = 3' 49" 11.0" L = 396.08' T = 199.20' R = 1,500.00' SE = 0.06 RUNOFF = 150'	PIs Sta 26+93.98 Os = 2' 51' 53.2" Ls = 150.00' LT = 100.01' ST = 50.01'	PIs Sta 28+93.99 Os = 3' 07" 30.8" Ls = 150.00' LT = 100.02' ST = 50.01'	PI Sta 33+81.20 Δ = 35' 16" 48.5" (RT) D = 4' 10" 01.1" L = 846.66' T = 437.23' R = 1,375.00' SE = 0.06 RUNOFF = 150'
--	--	--	--

SEE SHEET 14 FOR -L- GRADE

SEE SHEET 18 FOR -Y- GRADE

REVISIONS

1/28/2016 12:07\_Pldy\_psh\_05.dgn