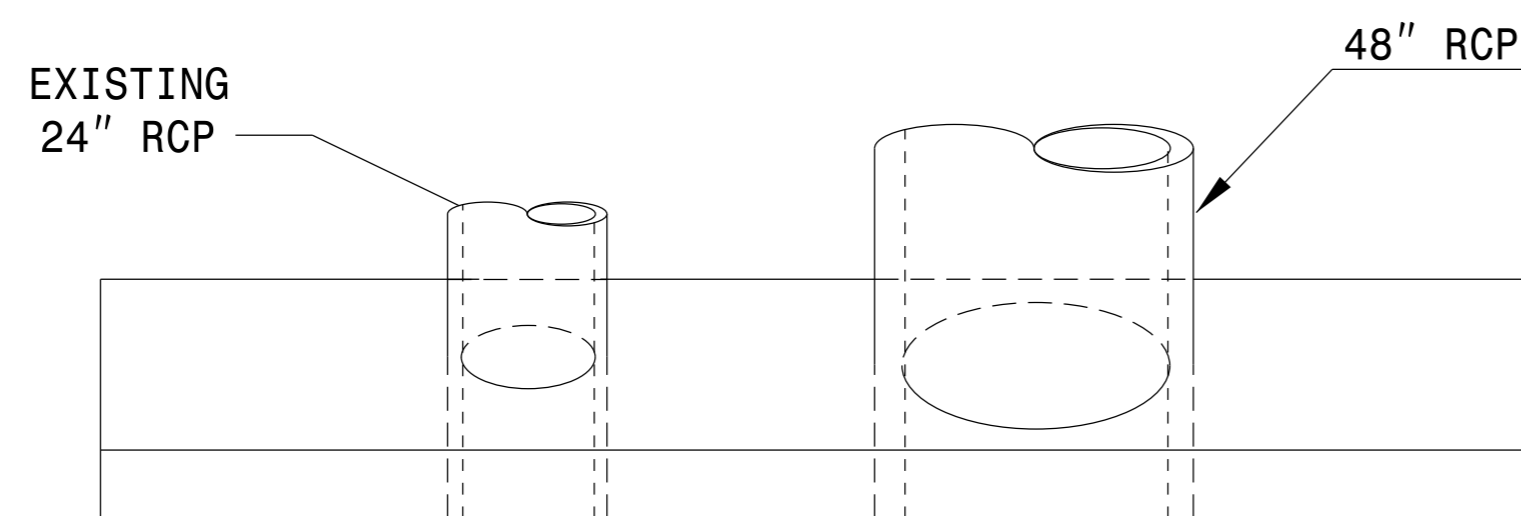


STATE OF NORTH CAROLINA
DEPT. OF TRANSPORTATION
DIVISION OF HIGHWAYS
RALEIGH, N.C.

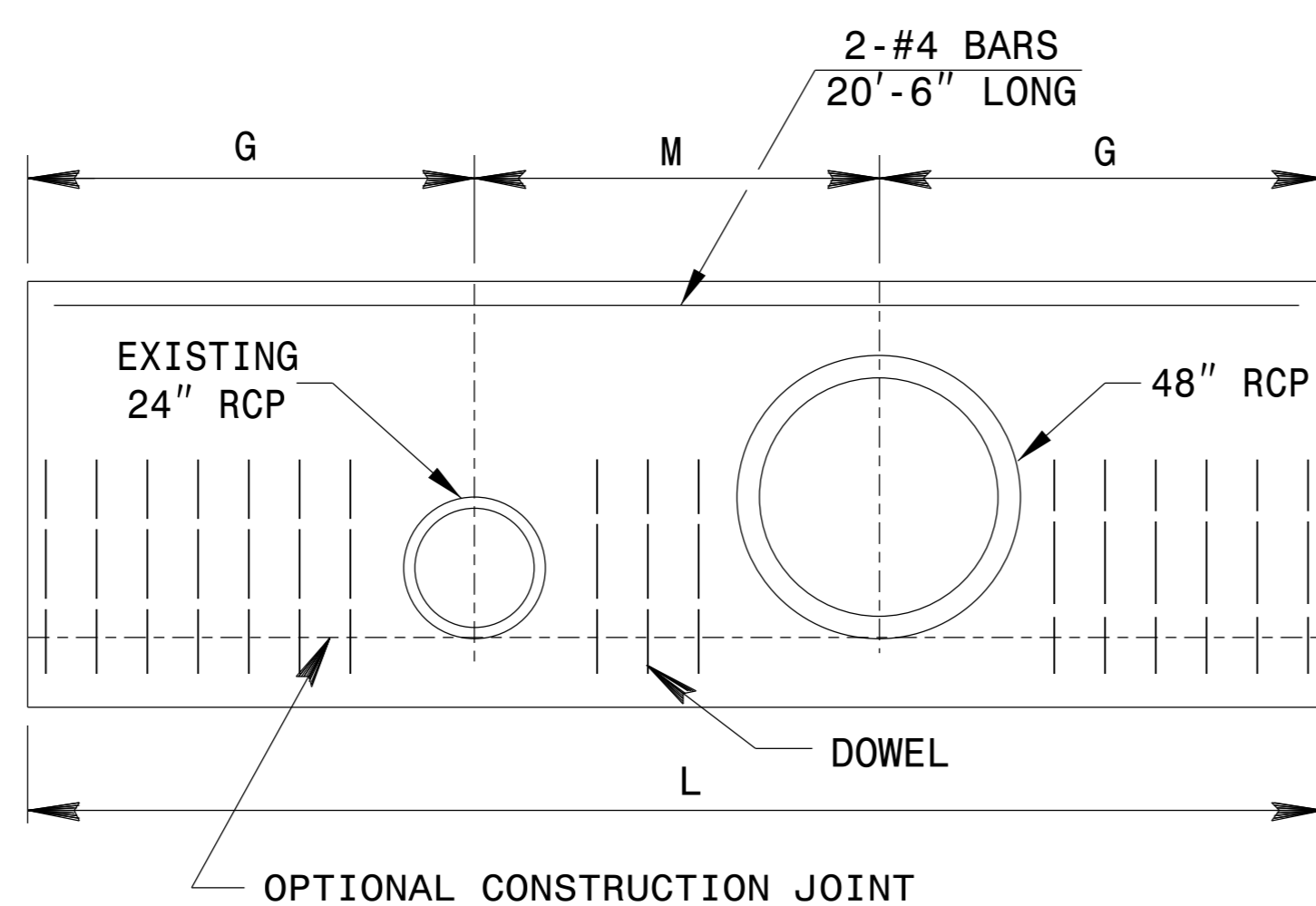
ENGLISH DETAIL DRAWING FOR
**CONCRETE ENDWALL FOR SINGLE
48" RCP AND EXISTING 24" RCP**

SHEET 1 OF 1

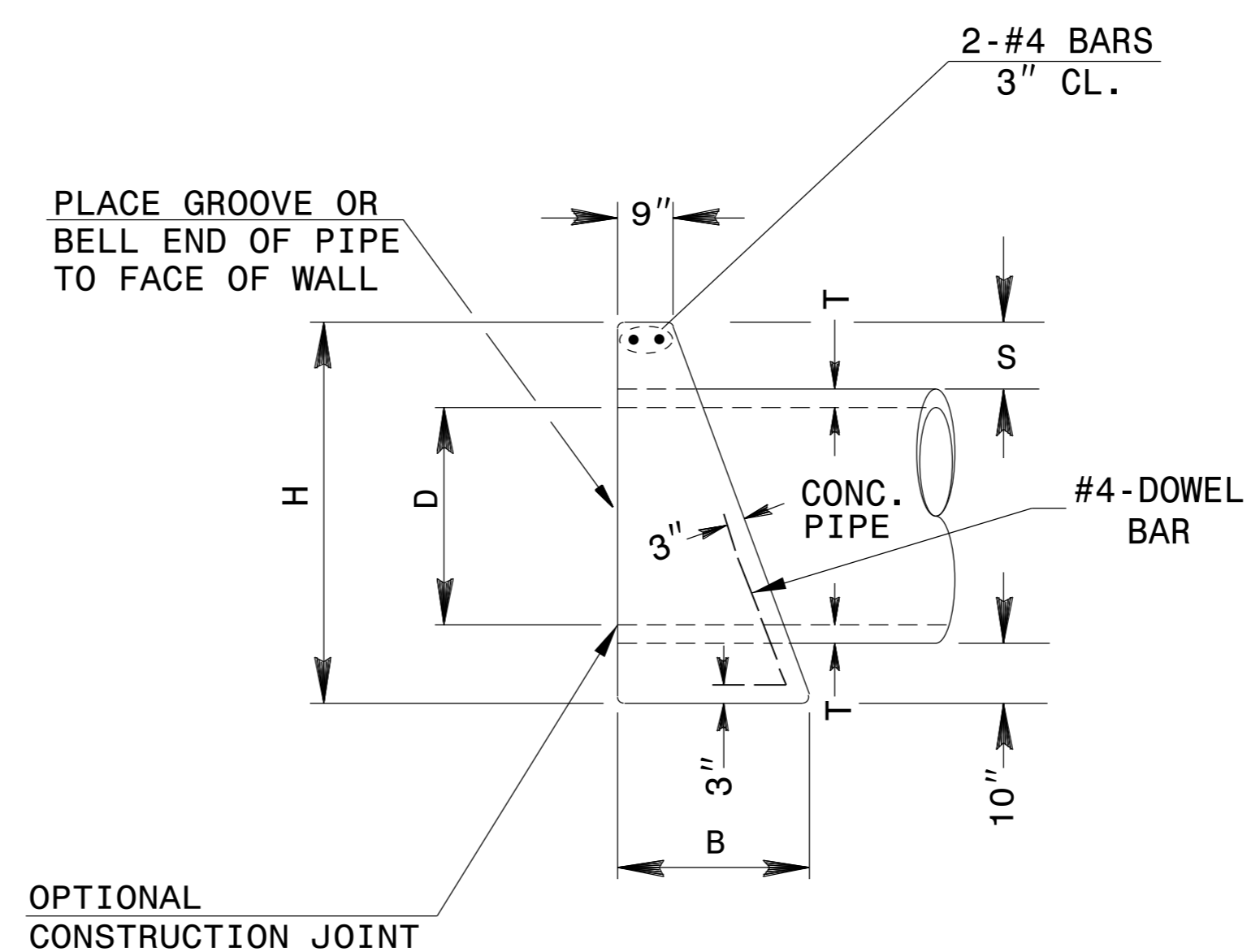
838D01



PLAN

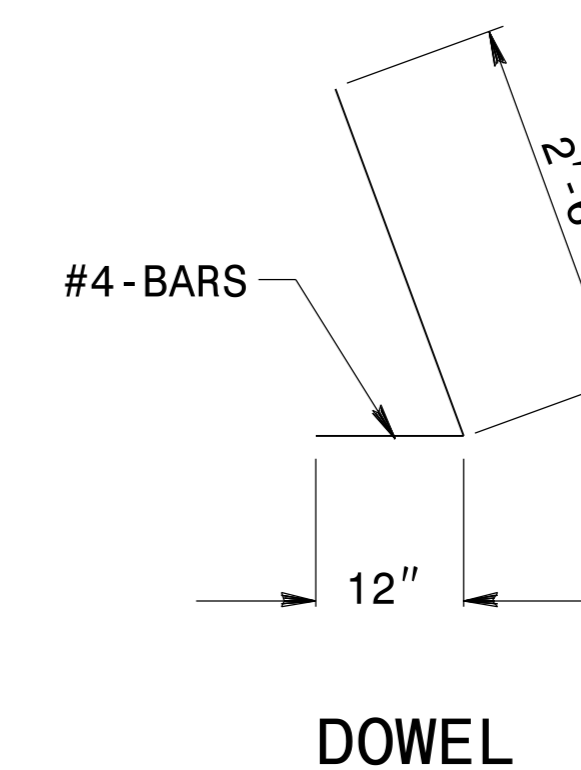


ELEVATION



END ELEVATION

* 24" RCP NOT SHOWN FOR CLARITY



DOWEL

DIMENSIONS AND CONCRETE QUANTITIES										
USING CONCRETE PIPE										
D	COMMON DIMENSIONS					DOUBLE PIPE				REINF. STEEL
	H	B	G	T	S	M	L	YD ³		
48"	6'-9"	3'-5"	7'-2"	5 3/4"	11 1/2"	6'-8"	21'-0"	8.0	60.0	

GENERAL NOTES:

CONSTRUCT ENDWALL IN ACCORDANCE WITH SECTION 838 OF THE STANDARD SPECIFICATIONS AND THIS DETAIL.

FORMS ARE TO BE USED FOR THE CONSTRUCTION OF THE BASE.

WHEN THE CONTRACTOR ELECTS TO USE A CONSTRUCTION JOINT AT THE BOTTOM OF THE PIPE, DOWELS SHALL BE PLACED IN THE BASE AS SHOWN ON PLANS. SPACING OF BARS IS TO BE APPROXIMATELY 12" CENTERS UNLESS OTHERWISE DIRECTED BY THE ENGINEER.

CLASS "B" CONCRETE SHALL BE USED.

MITRE HEADWALL FOR 24" RCP AS SHOWN IN STANDARD DRAWING 838.01.

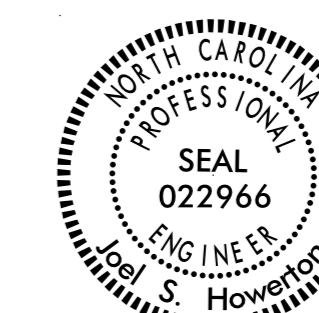
STATE OF NORTH CAROLINA
DEPT. OF TRANSPORTATION
DIVISION OF HIGHWAYS
RALEIGH, N.C.

ENGLISH DETAIL DRAWING FOR
**CONCRETE ENDWALL FOR SINGLE
48" RCP AND EXISTING 24" RCP**

SHEET 1 OF 1

838D01

2/9/2016



DocuSigned by:
Joel Howerton
873F3D17DCDC45F...

DOCUMENT NOT CONSIDERED FINAL
UNLESS ALL SIGNATURES COMPLETED

**CONTRACT STANDARDS
AND DEVELOPMENT UNIT**
Office 919-707-6950 FAX 919-250-4119

SEE PLATE FOR TITLE

ORIGINAL BY: STD.838.01 & 838.11 DATE: _____
MODIFIED BY: T.S.S. DATE: NOV.1997
CHECKED BY: _____ DATE: _____
FILE SPEC.: s:usr/details/standard/838d01e.dgn

838D01.dwg
 2/9/2016 10:00 AM
 J.S. Howerton
 838D01.dwg
 2/9/2016 10:00 AM
 J.S. Howerton