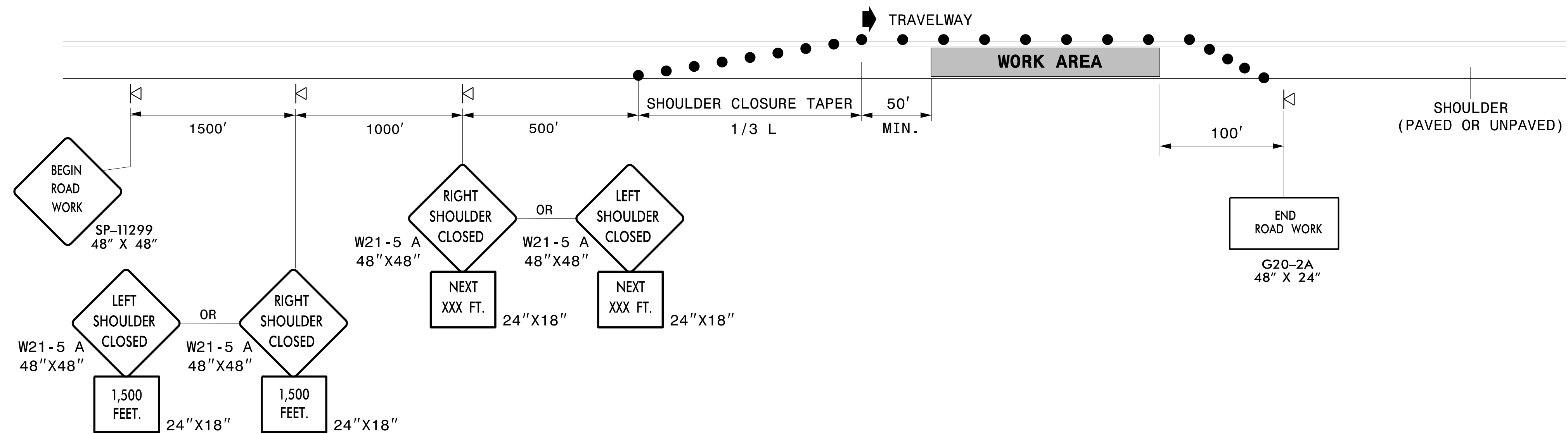


SHOULDER CLOSURE ON CONTROLLED ACCESS FACILITIES - ≥ 60 MPH



NOTES

- PLACE SHOULDER CLOSED SIGNS ON THE SAME SIDE AS THE SHOULDER THAT IS CLOSED.
- PLACE DRUMS IN THE SHOULDER TAPER AT THE MAXIMUM SPACING EQUAL IN FEET TO THE POSTED SPEED LIMIT. THE MAXIMUM SPACING OF DRUMS ALONG THE WORK AREA IS EQUAL IN FEET TO 2 TIMES THE POSTED SPEED LIMIT.
- REFER TO STD. 1101.11 SHEET 1 FOR "L" DISTANCE.

8/17/2015 P:\TIP\Projects-BP\BP5500E\TrafficControl\TCP\BP-5500E_TC-TMP-10_Shoulder_Closure_Individed.dgn User:idsfouchko

APPROVED: <i>Lori Stouchko</i> <small>032CRD188181416C</small> DATE: 8/17/2015			TEMPORARY SHOULDER CLOSURES ≥ 60 MPH
--	--	--	---