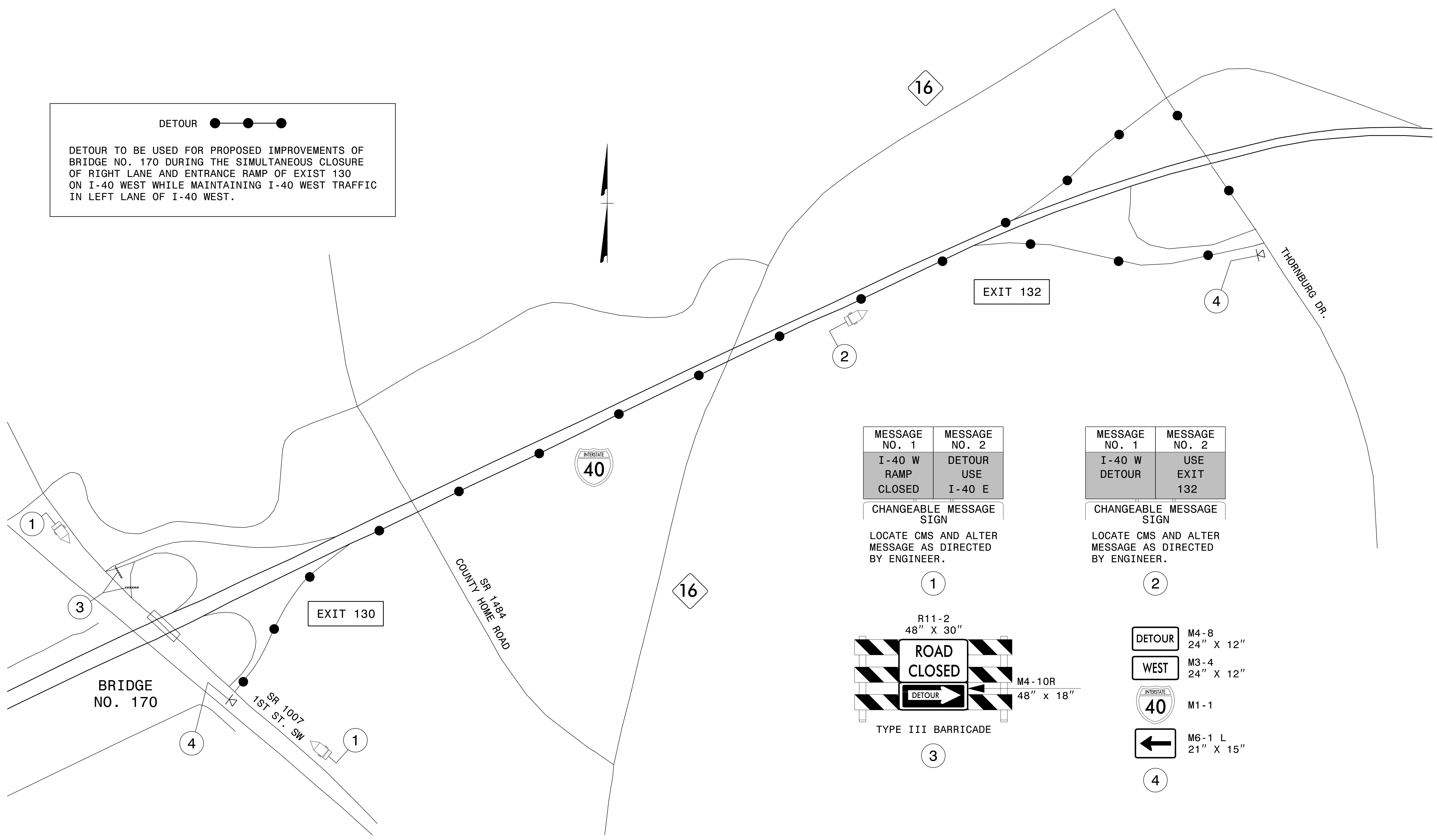


DETOUR ●—●—●

DETOUR TO BE USED FOR PROPOSED IMPROVEMENTS OF BRIDGE NO. 170 DURING THE SIMULTANEOUS CLOSURE OF RIGHT LANE AND ENTRANCE RAMP OF EXIST 130 ON I-40 WEST WHILE MAINTAINING I-40 WEST TRAFFIC IN LEFT LANE OF I-40 WEST.



MESSAGE NO. 1	MESSAGE NO. 2
I-40 W RAMP CLOSED	DETOUR USE I-40 E

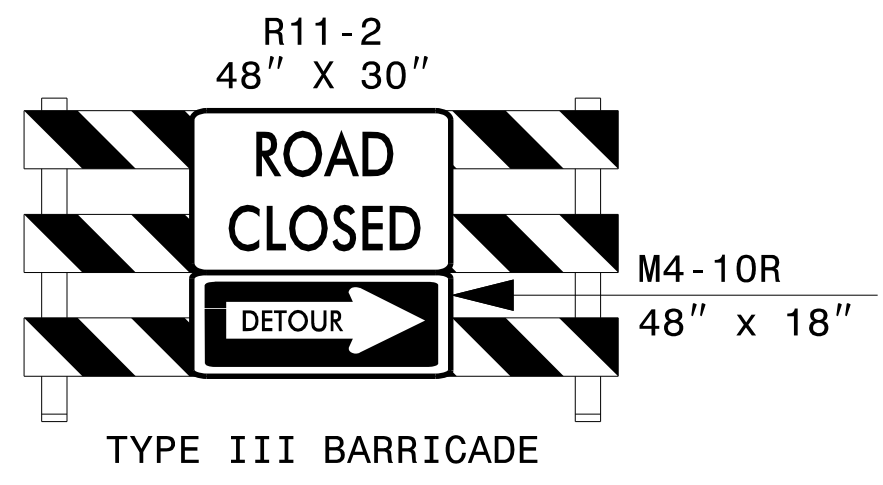
CHANGEABLE MESSAGE SIGN  
LOCATE CMS AND ALTER MESSAGE AS DIRECTED BY ENGINEER.

1

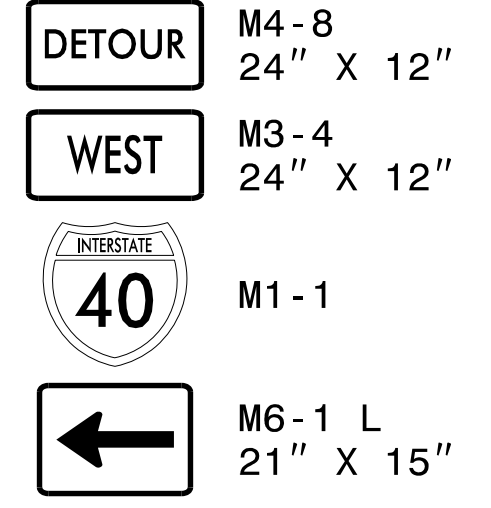
MESSAGE NO. 1	MESSAGE NO. 2
I-40 W DETOUR	USE EXIT 132

CHANGEABLE MESSAGE SIGN  
LOCATE CMS AND ALTER MESSAGE AS DIRECTED BY ENGINEER.

2



3



4

8/17/2015 P:\TIP\Projects-BP\BP5500E\TrafficControl\TCP\BP-5500E\_TC\_TMP-08\_Bridge 170 Detour 140 Entrance Ramp Exit 130.dgn User:idsfouchko

APPROVED: <i>Lori Stouchka</i> DATE: 8/17/2015 		<b>BRIDGE NO. 170 DETOUR FOR CLOSURE OF I-40 W ENTRANCE RAMP OF EXIT 130 FROM SR 1007 (1ST ST SW)</b>
---	--	---