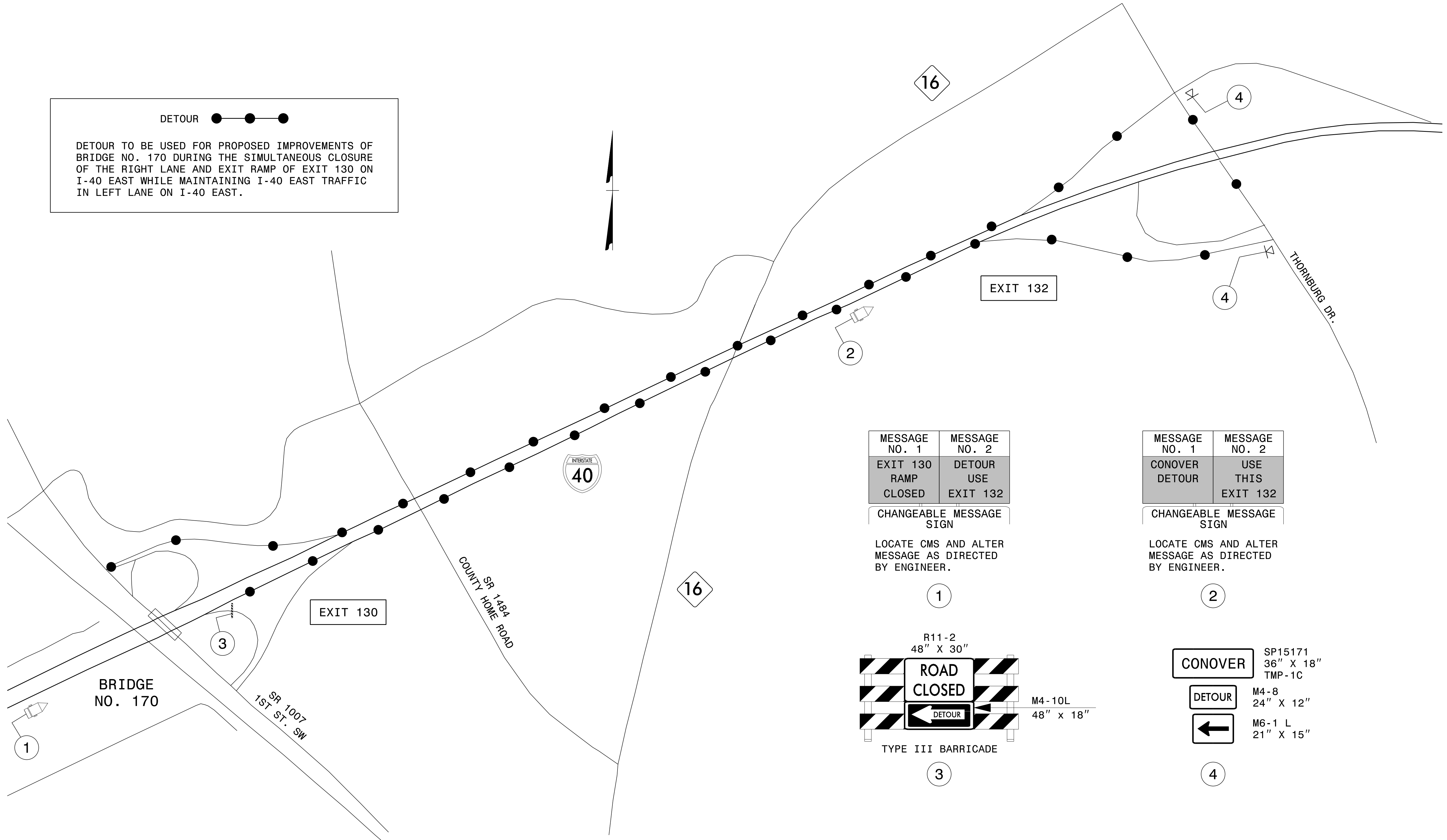


DETOUR ●—●—●

DETOUR TO BE USED FOR PROPOSED IMPROVEMENTS OF BRIDGE NO. 170 DURING THE SIMULTANEOUS CLOSURE OF THE RIGHT LANE AND EXIT RAMP OF EXIT 130 ON I-40 EAST WHILE MAINTAINING I-40 EAST TRAFFIC IN LEFT LANE ON I-40 EAST.



| MESSAGE NO. 1 | MESSAGE NO. 2 |
|----------------------|---------------------|
| EXIT 130 RAMP CLOSED | DETOUR USE EXIT 132 |

CHANGEABLE MESSAGE SIGN

LOCATE CMS AND ALTER MESSAGE AS DIRECTED BY ENGINEER.

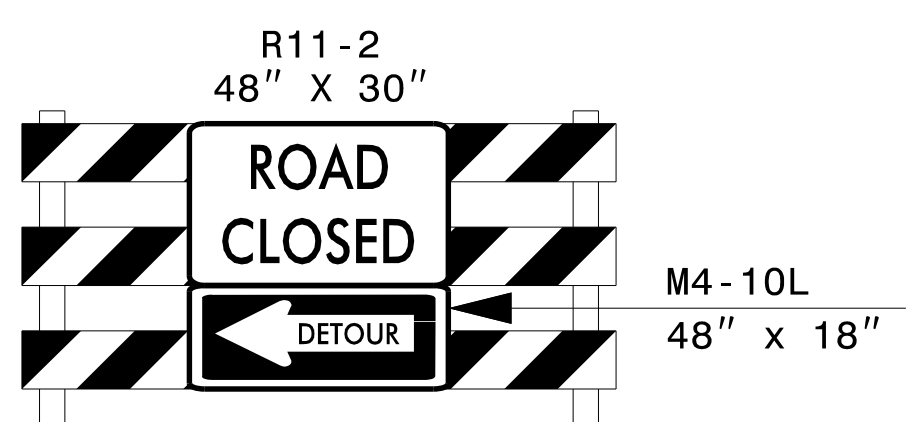
1

| MESSAGE NO. 1 | MESSAGE NO. 2 |
|----------------|-------------------|
| CONOVER DETOUR | USE THIS EXIT 132 |

CHANGEABLE MESSAGE SIGN

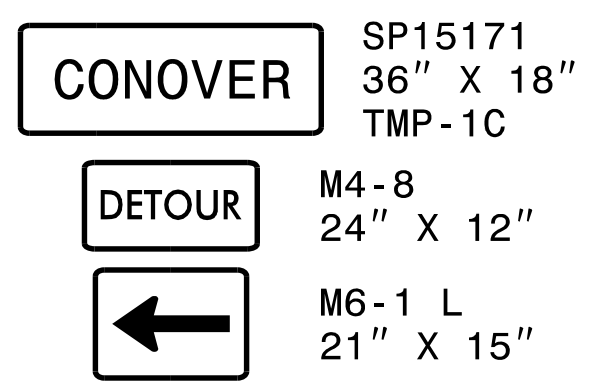
LOCATE CMS AND ALTER MESSAGE AS DIRECTED BY ENGINEER.

2



TYPE III BARRICADE

3



4

8/17/2015 P:\TIP\Projects-BP\BP5500E\TrafficControl\TCP\BP-5500E_TC_TMP-07_Bridge 170 Detour 140 Exit Ramp 130.dgn User:idsfouchko

| | | |
|---|--|---|
| APPROVED: <i>Lori Stouchka</i> DATE: 8/17/2015 | | BRIDGE NO. 170 DETOUR FOR CLOSURE OF I-40 E EXIT 130 RAMP TO SR 1007 (1ST ST SW) |
|---|--|---|