

DETOUR ●—●—●
 DETOUR TO BE USED FOR PROPOSED IMPROVEMENTS OF BRIDGE NO. 161 DURING THE SIMULTANEOUS CLOSURE OF RIGHT LANE AND ENTRANCE RAMP OF EXIT 125 ON I-40 EAST WHILE MAINTAINING TRAFFIC ON I-40 EAST IN THE LEFT LANE OF I-40 EAST.

MESSAGE NO. 1	MESSAGE NO. 2
I-40 E RAMP CLOSED	DETOUR USE I-40 W

CHANGEABLE MESSAGE SIGN

LOCATE CMS AND ALTER MESSAGE AS DIRECTED BY ENGINEER.

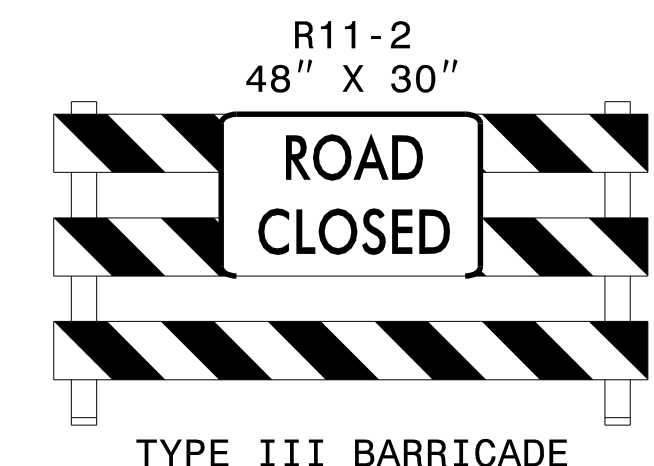
1

MESSAGE NO. 1	MESSAGE NO. 2
I-40 E DETOUR	USE EXIT 123 A

CHANGEABLE MESSAGE SIGN

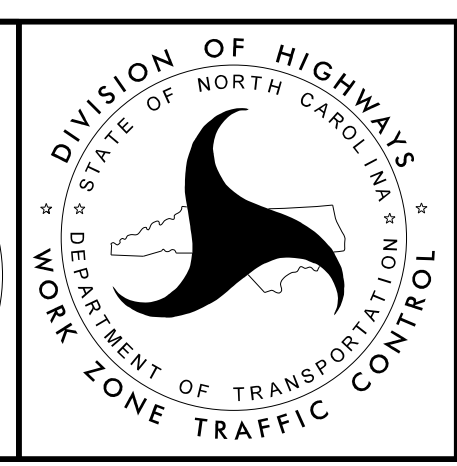
LOCATE CMS AND ALTER MESSAGE AS DIRECTED BY ENGINEER.

2



3

APPROVED: *Lori Stouchka*
 DATE: 8/17/2015



BRIDGE NO. 161
 DETOUR FOR CLOSURE OF I-40 E ENTRANCE RAMP AT EXIT 125 FROM SR 1007 (LENOIR RHYNE BLVD)

8/17/2015
 P:\TIP\Projects-BP\BP5500E\TrafficControl\TCP\BP-5500E_TC-TMP-06_bridg_161_detour.dgn
 User:idsfouchka