

**DETOUR** ●—●—●

DETOUR TO BE USED FOR PROPOSED IMPROVEMENTS OF BRIDGE NO. 123 DURING THE SIMULTANEOUS CLOSURE OF RIGHT LANE AND EXIT RAMP OF EXIT 123 ON I-40 WEST WHILE MAINTAINING TRAFFIC ON I-40 WEST IN THE LEFT LANE OF I-40 WEST.

MESSAGE NO. 1	MESSAGE NO. 2
US 321 RAMP CLOSED	DETOUR USE EXIT 121

CHANGEABLE MESSAGE SIGN

LOCATE CMS AND ALTER MESSAGE AS DIRECTED BY ENGINEER.

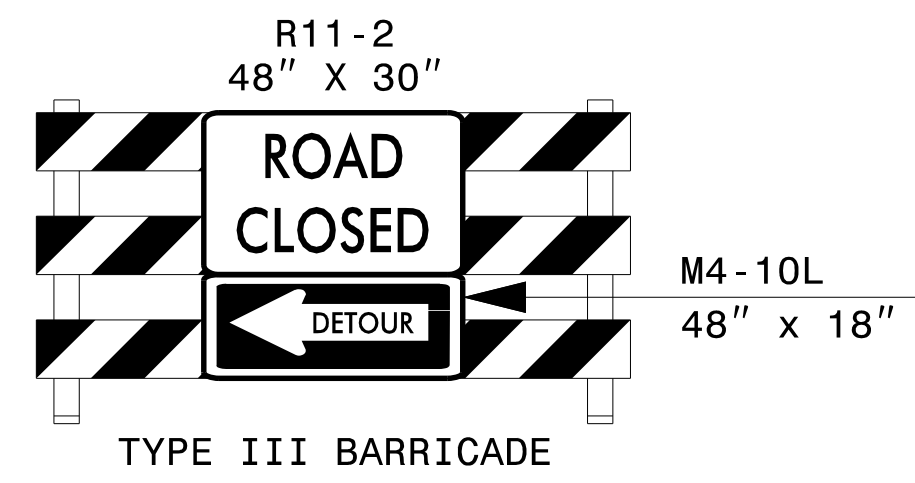
1

MESSAGE NO. 1	MESSAGE NO. 2
US 321 DETOUR	USE THIS EXIT 121

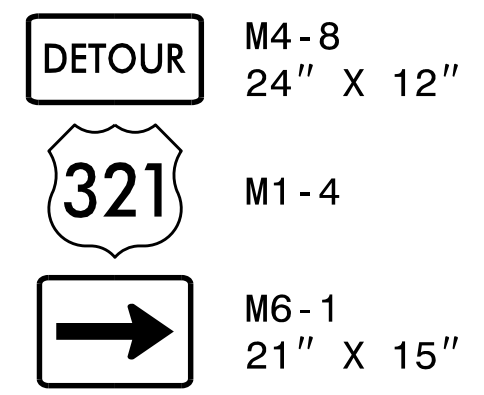
CHANGEABLE MESSAGE SIGN

LOCATE CMS AND ALTER MESSAGE AS DIRECTED BY ENGINEER.

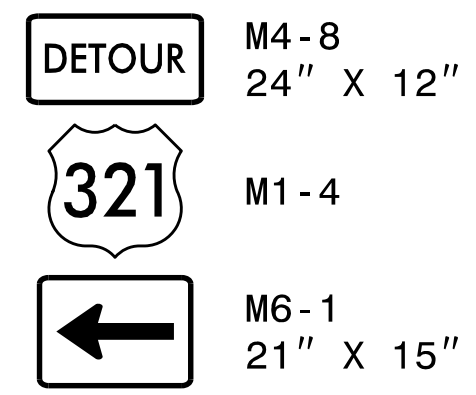
2



3

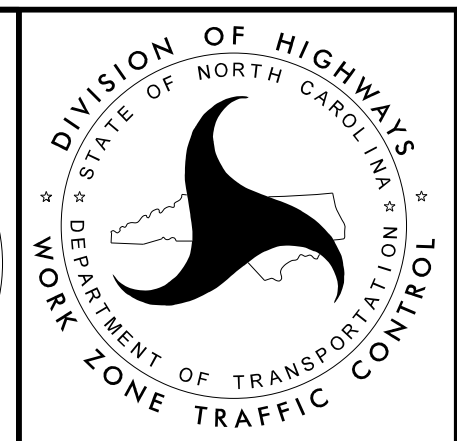


4



4

APPROVED: *Lori Stouchka*  
PROFESSIONAL ENGINEER  
034437  
8/17/2015



**BRIDGE NO. 123  
 DETOUR FOR CLOSURE  
 OF I-40 W EXIT RAMP  
 AT EXIT 123 TO US 321**

8/17/2015  
 P:\TIP\Projects-BP\BP5500E\TrafficControl\TCP\BP-5500E\_TC\_TMP-05.bridge.123\_detour.140\_w.dgn  
 User:idsfouchko